

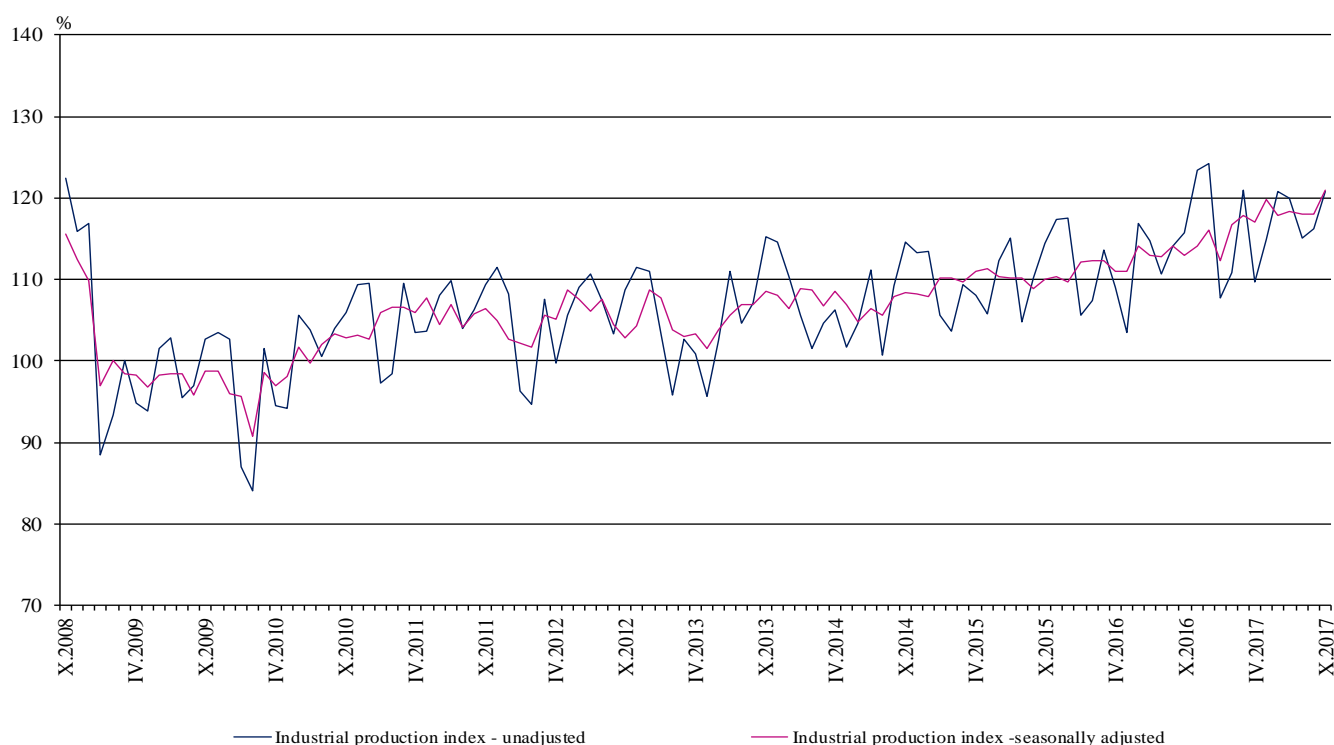


INDUSTRIAL PRODUCTION INDICES IN OCTOBER 2017¹

According to the preliminary data the Industrial Production Index², seasonally adjusted³, decreased by 0.6% in October 2017 as compared to September 2017.

In October 2017 working day adjusted⁴ Industrial Production Index rose by 2.8% in comparison with the same month of 2016.

Figure 1. Industrial Production Indices (2010 = 100)



¹ October 2017 data are preliminary. The final data on Industrial Production and Turnover Indices for September 2017 can be found on the NSI website: <http://www.nsi.bg/en>.

² Monthly Industrial Production and Industrial turnover indices measure changes in production and turnover values of industrial enterprises. This information can be used to assess the current economic development and for short-term forecasts. Indices do not measure the actual production level, it aims to measure the average change in value of production between two points of time. Indices are compiled on the base of information collected through representative sampling survey on industrial enterprises. The sample covers enterprises with annual turnover more than 97% of total turnover in industry.

Industrial production indices are calculated at constant base year that is to say they are weighted with the structure of the value added at factor costs in the base year.

³ Seasonal adjustment is a statistical method, which eliminates the seasonal component of time series.

⁴ Working day adjustment is an adjustment for variations caused by calendar effects, different number of calendar and working days in the months, national holidays and outliers (for example the presence of more non-working days in May could contribute to the decline in the production in some activities).

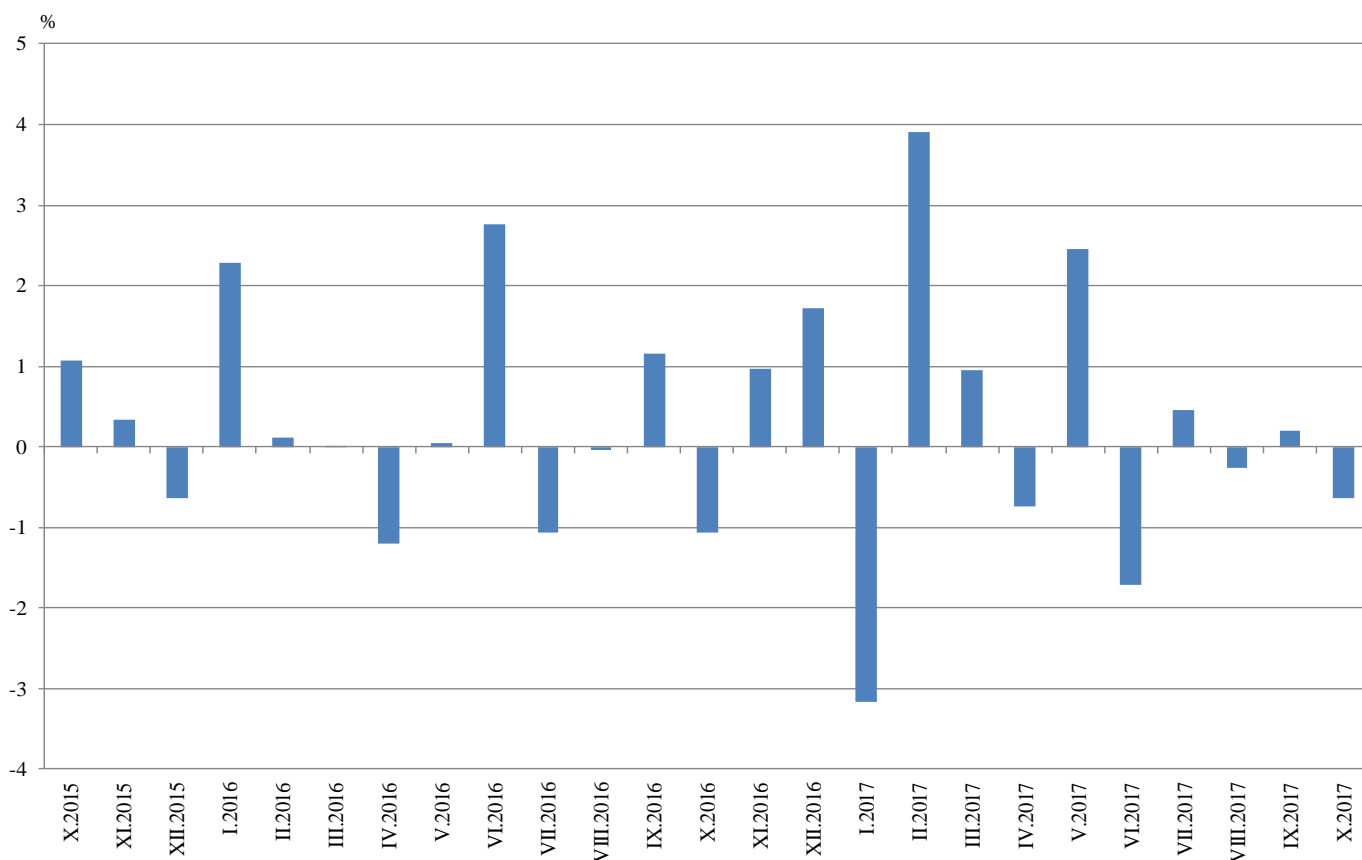


Monthly comparisons

In October 2017 as compared to September 2017, the seasonally adjusted Industrial Production Index decreased in the electricity, gas, steam and air conditioning supply by 4.5% and in the mining and quarrying industry by 2.8%, while in the manufacturing the production rose by 0.1%.

The most significant production increases in the manufacturing were registered in the manufacture of computer, electronic and optical products by 13.5%, in the manufacture of leather and related products by 5.9%, in the manufacture of fabricated metal products, except machinery and equipment by 3.8%, in the manufacture of chemicals and chemical products by 3.7%. There were decreases in the repair and installation of machinery and equipment by 14.6%, in the manufacture of basic pharmaceutical products and pharmaceutical preparations by 7.5%, in the manufacture of tobacco products by 5.4%, in the manufacture of other transport equipment by 4.7%.

**Figure 2. Changes of Industrial Production Indices compared to the previous month
(Seasonally adjusted)**



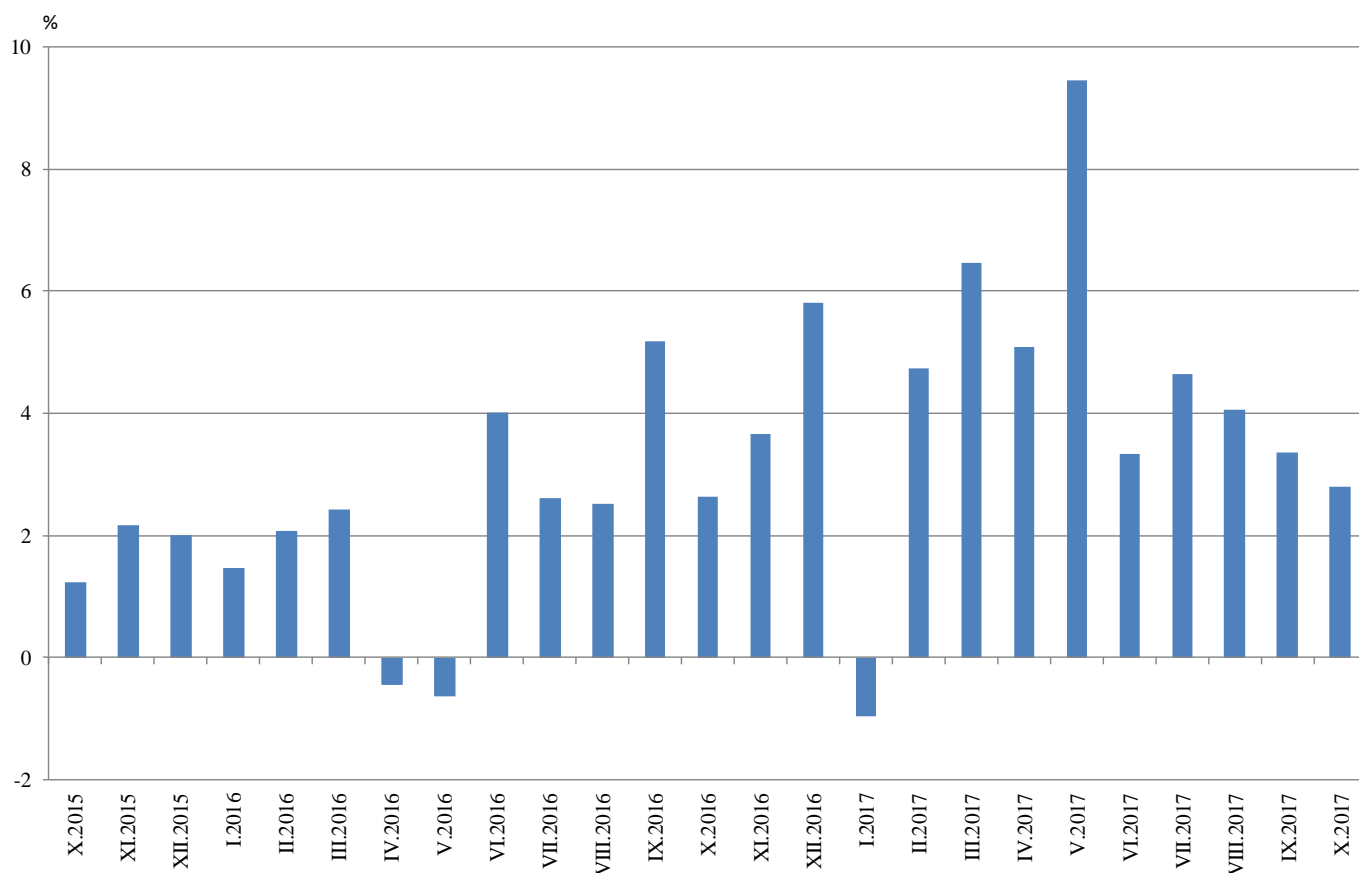


Annual comparisons

On annual basis in October 2017 Industrial Production Index calculated from working day adjusted data rose in the manufacturing by 5.5% and in mining and quarrying industry by 4.3%, while the production fell in the electricity, gas, steam and air conditioning supply by 8.8%.

In the manufacturing, the more considerable increases compared to the same month of the previous year were registered in the manufacture of machinery and equipment by 17.1%, in the manufacture of fabricated metal products, except machinery and equipment by 15.8%, in the manufacture of motor vehicles, trailers and semi-trailers by 15.2%, in the manufacture of rubber and plastic products by 13.4%. Decreases were seen in the manufacture of tobacco products by 14.0%, in the manufacture of wearing apparel by 8.9%, in the repair and installation of machinery and equipment by 8.0%, in the manufacture of furniture by 5.8%.

Figure 3. Changes of Industrial Production Indices compared to the same month of the previous year (Working day adjusted)



Annex

Table 1
Changes of Industrial Production Indices compared to the previous month^{1,2}
(Per cent)

Economic activities	NACE.BG - 2008	2017					
		V	VI	VII	VIII	IX	X
Industry	B_TO_E36	2.5	-1.7	0.5	-0.3	0.2	-0.6
Mining and quarrying	B	4.0	0.7	0.2	4.3	-0.9	-2.8
Mining of coal and lignite	B05	11.0	-4.5	-7.0	0.6	2.2	-2.0
Extraction of crude petroleum and natural gas	B06
Mining of metal ores	B07	-1.8	11.2	3.0	4.9	1.9	-2.4
Other mining and quarrying	B08	-0.5	6.2	-10.8	2.1	5.6	0.7
Mining support service activities	B09
Manufacturing	C	2.3	-2.5	0.6	-0.5	0.7	0.1
Manufacture of food products	C10	6.4	4.7	-3.2	-4.2	0.7	3.3
Manufacture of beverages	C11	0.7	-3.4	4.1	-5.7	6.8	2.0
Manufacture of tobacco products	C12	5.0	-10.9	-20.3	23.5	-4.9	-5.4
Manufacture of textiles	C13	0.5	-2.8	-2.0	1.2	2.0	-1.9
Manufacture of wearing apparel	C14	2.1	-0.1	-4.5	-1.2	3.6	-3.6
Manufacture of leather and related products	C15	5.6	-5.6	-13.0	0.7	3.8	5.9
Manufacture of wood and of products of wood and cork, except furniture; manufacture of articles of straw and plaiting materials	C16	-0.2	-4.4	-5.4	-2.5	2.8	-1.2
Manufacture of paper and paper products	C17	6.1	-3.3	-2.3	4.1	-1.7	3.3
Printing and reproduction of recorded media	C18	5.4	-2.7	2.2	-4.9	-0.7	0.6
Manufacture of coke and refined petroleum products	C19
Manufacture of chemicals and chemical products	C20	-2.4	-4.6	12.0	6.1	-7.4	3.7
Manufacture of basic pharmaceutical products and pharmaceutical preparations	C21	15.0	6.1	-1.4	-1.1	-3.6	-7.5
Manufacture of rubber and plastic products	C22	2.6	-2.3	-2.4	6.1	1.6	2.2
Manufacture of other non-metallic mineral products	C23	-1.0	-2.3	1.9	2.2	-0.3	1.8
Manufacture of basic metals	C24	3.1	-2.6	-6.3	3.3	6.5	0.1
Manufacture of fabricated metal products, except machinery and equipment	C25	-11.7	-7.1	19.4	-11.9	-7.0	3.8
Manufacture of computer, electronic and optical products	C26	-7.7	9.6	-2.3	4.1	-12.5	13.5
Manufacture of electrical equipment	C27	7.7	-0.4	-4.4	1.4	5.3	1.2
Manufacture of machinery and equipment n.e.c.	C28	11.0	-10.0	3.0	-1.1	0.2	2.9
Manufacture of motor vehicles, trailers and semi-trailers	C29	3.3	-5.2	4.7	-0.8	6.6	3.1
Manufacture of other transport equipment	C30	9.8	5.9	-8.5	0.1	11.1	-4.7
Manufacture of furniture	C31	1.6	-4.3	-3.4	0.1	-2.3	1.1
Other manufacturing	C32	-9.0	3.6	-7.6	12.4	3.7	-9.7
Repair and installation of machinery and equipment	C33	12.9	-11.8	22.9	-21.2	10.7	-14.6
Electricity, gas, steam and air conditioning supply	D	2.0	0.1	-1.0	-0.9	-1.1	-4.5
Electricity, gas, steam and air conditioning supply	D35	2.0	0.1	-1.0	-0.9	-1.1	-4.5

¹ Seasonally adjusted.

² ‘.’ - Confidential data.

Table 2

Changes of Industrial Production Indices compared to the same month of the previous year^{1,2}
(Per cent)

Economic activities	NACE.BG - 2008	2017					
		V	VI	VII	VIII	IX	X
Industry	B_TO_E36	9.4	3.3	4.6	4.1	3.4	2.8
Mining and quarrying	B	6.2	7.8	3.9	13.0	8.0	4.3
Mining of coal and lignite	B05	25.6	29.8	7.2	14.5	15.3	0.0
Extraction of crude petroleum and natural gas	B06
Mining of metal ores	B07	0.4	1.4	5.1	17.9	7.8	11.8
Other mining and quarrying	B08	-12.5	-2.7	-17.7	-17.9	-4.4	0.7
Mining support service activities	B09
Manufacturing	C	13.7	4.7	6.4	5.2	4.6	5.5
Manufacture of food products	C10	2.7	8.6	3.7	-4.1	2.3	4.0
Manufacture of beverages	C11	2.7	-8.9	-6.9	-13.0	-3.4	-2.4
Manufacture of tobacco products	C12	60.1	20.6	-26.4	3.8	9.6	-14.0
Manufacture of textiles	C13	-5.5	-1.7	-0.8	1.4	0.4	-2.2
Manufacture of wearing apparel	C14	-2.7	-2.5	-10.5	-5.8	-6.3	-8.9
Manufacture of leather and related products	C15	10.2	3.4	-15.1	-2.3	-11.9	-0.3
Manufacture of wood and of products of wood and cork, except furniture; manufacture of articles of straw and plaiting materials	C16	1.1	-2.1	-4.7	-9.6	-0.2	-4.9
Manufacture of paper and paper products	C17	2.5	-4.5	-5.3	-3.0	-2.6	0.9
Printing and reproduction of recorded media	C18	9.1	1.1	3.2	-1.6	-2.2	-5.0
Manufacture of coke and refined petroleum products	C19
Manufacture of chemicals and chemical products	C20	12.8	12.0	8.9	15.6	10.1	8.1
Manufacture of basic pharmaceutical products and pharmaceutical preparations	C21	13.8	16.4	19.5	22.6	11.8	-4.5
Manufacture of rubber and plastic products	C22	14.8	7.0	4.2	11.5	14.0	13.4
Manufacture of other non-metallic mineral products	C23	9.4	1.1	6.2	7.4	8.3	9.3
Manufacture of basic metals	C24	41.8	46.3	-4.4	7.3	27.9	6.3
Manufacture of fabricated metal products, except machinery and equipment	C25	38.4	-8.4	37.4	15.5	-9.1	15.8
Manufacture of computer, electronic and optical products	C26	13.4	26.0	18.6	24.7	4.2	10.3
Manufacture of electrical equipment	C27	9.4	4.0	-1.5	1.0	8.1	10.2
Manufacture of machinery and equipment n.e.c.	C28	35.3	11.6	12.3	15.8	18.4	17.1
Manufacture of motor vehicles, trailers and semi-trailers	C29	4.7	-2.3	7.6	1.9	14.3	15.2
Manufacture of other transport equipment	C30	2.7	16.8	0.0	-15.5	12.3	12.9
Manufacture of furniture	C31	7.3	6.3	-3.9	0.7	-5.9	-5.8
Other manufacturing	C32	3.4	9.5	7.6	10.0	11.6	3.7
Repair and installation of machinery and equipment	C33	14.8	5.2	24.5	3.7	-0.1	-8.0
Electricity, gas, steam and air conditioning supply	D	-5.1	-4.5	-1.4	-3.8	-3.6	-8.8
Electricity, gas, steam and air conditioning supply	D35	-5.1	-4.5	-1.4	-3.8	-3.6	-8.8

¹ Working day adjusted.

² ‘.’ - Confidential data.

Table 3

Industrial Production Indices¹
(Seasonally adjusted, 2010 = 100)

NACE.BG - 2008	2016			2017									
	X	XI	XII	I	II	III	IV	V	VI	VII	VIII	IX	X
B_TO_E36	113.0	114.1	116.0	112.4	116.7	117.8	117.0	119.9	117.8	118.3	118.0	118.3	117.5
B	101.0	104.5	104.0	103.7	109.0	102.6	99.7	103.6	104.4	104.6	109.1	108.1	105.1
B05	106.2	118.0	104.5	101.4	121.6	111.7	108.3	120.2	114.8	106.7	107.4	109.8	107.6
B06
B07	99.3	108.7	105.2	96.8	100.7	101.4	94.6	92.9	103.3	106.4	111.6	113.7	111.0
B08	95.5	100.1	94.0	89.6	106.3	93.7	93.6	93.2	98.9	88.2	90.0	95.0	95.7
B09
C	118.7	120.3	122.8	116.7	124.1	127.3	125.8	128.7	125.5	126.3	125.6	126.5	126.6
C10	91.9	92.1	89.9	88.3	93.8	92.5	88.9	94.6	99.0	95.8	91.9	92.5	95.6
C11	106.1	105.0	102.7	91.0	102.5	102.4	98.3	99.0	95.6	99.6	93.9	100.3	102.3
C12	76.6	78.4	81.0	78.3	79.4	79.0	83.1	87.2	77.7	62.0	76.5	72.7	68.8
C13	109.1	108.9	101.3	98.7	114.6	108.6	111.1	111.7	108.6	106.4	107.7	109.8	107.7
C14	97.1	90.2	94.5	94.0	97.8	100.4	93.6	95.5	95.4	91.2	90.1	93.3	90.0
C15	71.8	75.1	69.8	71.6	70.8	77.3	74.0	78.1	73.7	64.1	64.6	67.0	71.0
C16	86.2	84.4	85.5	88.3	97.0	89.2	92.0	91.9	87.8	83.1	81.0	83.3	82.3
C17	129.5	138.8	129.0	131.3	132.0	129.8	122.9	130.5	126.1	123.2	128.3	126.1	130.2
C18	120.4	122.0	114.1	117.7	119.1	126.2	115.7	122.0	118.7	121.4	115.5	114.6	115.3
C19
C20	125.0	117.9	111.7	114.2	125.6	121.1	127.6	124.5	118.8	133.1	141.2	130.7	135.6
C21	145.9	148.7	141.4	151.8	145.5	151.5	136.3	156.8	166.4	164.1	162.3	156.5	144.7
C22	147.5	154.1	148.0	148.9	154.9	162.2	155.6	159.7	156.0	152.3	161.6	164.1	167.8
C23	122.0	120.4	121.4	117.0	128.8	129.3	129.4	128.2	125.3	127.7	130.5	130.1	132.5
C24	103.4	105.7	108.1	105.5	113.0	115.9	110.5	114.0	111.1	104.0	107.4	114.4	114.5
C25	148.7	168.4	190.3	124.8	169.2	177.4	208.8	184.5	171.3	204.6	180.3	167.8	174.1
C26	175.8	171.7	158.7	196.2	179.3	203.1	189.6	174.9	191.6	187.2	194.9	170.6	193.6
C27	146.4	148.1	144.6	142.9	145.0	149.0	143.8	154.9	154.3	147.5	149.6	157.6	159.6
C28	145.5	156.2	158.0	146.9	157.9	159.7	163.0	180.9	162.8	167.6	165.8	166.0	170.8
C29	174.6	176.5	179.5	181.4	180.9	185.9	177.2	183.1	173.6	181.8	180.2	192.2	198.2
C30	80.9	81.3	83.1	98.8	86.3	83.9	80.1	87.9	93.1	85.1	85.2	94.6	90.2
C31	133.6	138.6	130.4	122.3	130.6	136.9	136.8	139.0	133.0	128.5	128.6	125.6	127.0
C32	211.6	230.6	237.7	268.8	245.6	232.2	241.0	219.3	227.2	210.0	236.1	244.8	221.2
C33	85.6	84.3	89.0	78.5	86.1	85.4	88.3	99.7	87.9	108.1	85.1	94.2	80.5
D	102.1	100.7	102.5	111.4	102.8	96.9	100.5	102.6	102.7	101.7	100.8	99.7	95.2
D35	102.1	100.7	102.5	111.4	102.8	96.9	100.5	102.6	102.7	101.7	100.8	99.7	95.2

¹ '..' - Confidential data.



Table 4

Industrial Production Indices¹
(Working day adjusted, 2010 = 100)

NACE.BG - 2008	2014	2015	2016				2017									
	X	X	X	XI	XII	I	II	III	IV	V	VI	VII	VIII	IX	X	
B_TO_E36	113.3	114.7	117.7	122.4	122.5	106.8	111.1	119.9	113.0	114.3	119.7	122.0	113.7	118.0	121.0	
B	111.7	101.4	111.7	117.1	114.4	99.2	105.2	98.8	92.0	96.1	99.9	102.7	108.1	113.0	116.5	
B05	134.3	117.4	131.1	135.9	127.0	116.6	123.3	97.9	90.0	103.2	91.3	97.8	103.2	116.2	131.1	
B06	
B07	98.0	88.6	99.3	108.7	105.2	96.8	100.7	101.4	94.6	92.9	103.3	106.4	111.6	113.7	111.0	
B08	136.3	142.3	112.6	112.2	97.1	52.1	79.5	83.7	92.4	96.6	110.5	99.8	100.6	104.7	113.4	
B09	
C	117.9	123.6	126.4	129.0	122.9	100.1	112.8	129.2	124.7	127.9	133.5	134.8	121.6	128.9	133.3	
C10	99.9	100.3	101.4	99.0	94.0	74.0	81.2	90.8	85.3	92.6	101.9	97.3	94.8	99.7	105.5	
C11	77.2	86.0	93.4	94.9	106.6	54.9	71.8	96.8	101.4	105.9	115.3	128.0	117.8	108.6	91.2	
C12	112.6	91.2	75.2	79.3	89.8	60.6	63.3	85.5	77.0	87.3	83.4	72.1	75.0	71.9	64.7	
C13	112.7	119.7	113.0	113.6	87.7	82.8	112.4	121.3	122.8	128.4	120.8	110.9	85.2	105.6	110.6	
C14	94.2	103.8	99.6	87.3	95.1	98.0	95.1	96.8	85.4	86.7	105.0	105.4	85.7	92.7	90.7	
C15	84.9	77.0	74.7	77.4	64.2	73.2	68.2	77.5	65.3	65.5	76.3	75.8	62.3	73.5	74.5	
C16	111.2	107.9	97.7	93.9	79.6	67.7	83.5	87.8	90.4	91.2	96.2	91.7	81.6	87.7	92.9	
C17	118.9	137.9	129.8	138.7	121.7	122.9	125.4	135.4	124.1	133.9	132.9	127.3	127.1	126.5	130.9	
C18	113.9	123.1	129.0	140.0	126.5	103.5	109.9	127.4	110.3	117.3	119.5	120.6	107.6	113.5	122.6	
C19	
C20	128.0	113.7	125.1	121.5	108.9	105.5	117.9	131.5	131.9	124.7	122.9	135.4	135.2	131.2	135.2	
C21	153.1	160.1	158.1	155.8	144.7	142.6	148.8	164.9	135.5	153.5	178.1	158.0	144.7	153.2	151.0	
C22	145.4	150.2	161.5	159.6	127.3	131.0	143.1	166.9	157.5	161.0	168.4	160.8	159.6	168.8	183.1	
C23	126.3	141.7	136.4	132.5	109.2	77.1	104.4	129.9	133.6	140.1	136.2	138.6	140.4	140.1	149.1	
C24	115.7	103.3	115.8	112.8	90.9	102.3	107.4	125.9	109.8	113.3	116.7	109.5	96.2	117.0	123.0	
C25	124.1	144.2	152.3	185.1	221.2	97.2	149.6	176.5	207.1	174.9	182.1	213.9	174.3	172.1	176.2	
C26	144.7	158.7	183.9	182.8	171.4	181.5	165.0	214.5	187.6	173.0	201.9	190.9	171.2	164.7	203.0	
C27	146.6	162.4	160.5	162.0	129.0	130.0	141.3	160.4	138.6	152.6	164.3	156.1	131.3	160.5	176.8	
C28	146.7	143.8	149.4	167.9	152.2	128.9	153.3	171.7	163.3	182.1	176.1	177.5	148.7	164.1	175.0	
C29	165.0	174.9	187.8	189.3	161.3	177.7	180.2	201.3	177.0	185.7	177.5	181.4	148.9	194.0	216.4	
C30	76.7	101.3	75.3	73.6	85.0	81.1	78.2	94.4	84.3	103.6	100.3	84.2	72.2	87.8	85.0	
C31	138.4	139.5	148.9	155.3	131.9	102.9	115.4	135.3	134.0	135.9	134.4	131.6	128.2	130.9	140.3	
C32	164.0	211.3	242.5	242.4	205.0	237.5	211.0	235.4	232.3	216.5	256.9	207.2	242.0	260.0	251.5	
C33	91.1	99.5	92.2	99.4	121.0	55.5	72.1	82.9	78.3	94.7	87.9	111.9	82.6	99.9	84.8	
D	101.9	95.4	96.1	108.6	128.9	134.8	112.9	105.0	90.2	83.1	88.4	93.5	91.5	87.1	87.6	
D35	101.9	95.4	96.1	108.6	128.9	134.8	112.9	105.0	90.2	83.1	88.4	93.5	91.5	87.1	87.6	