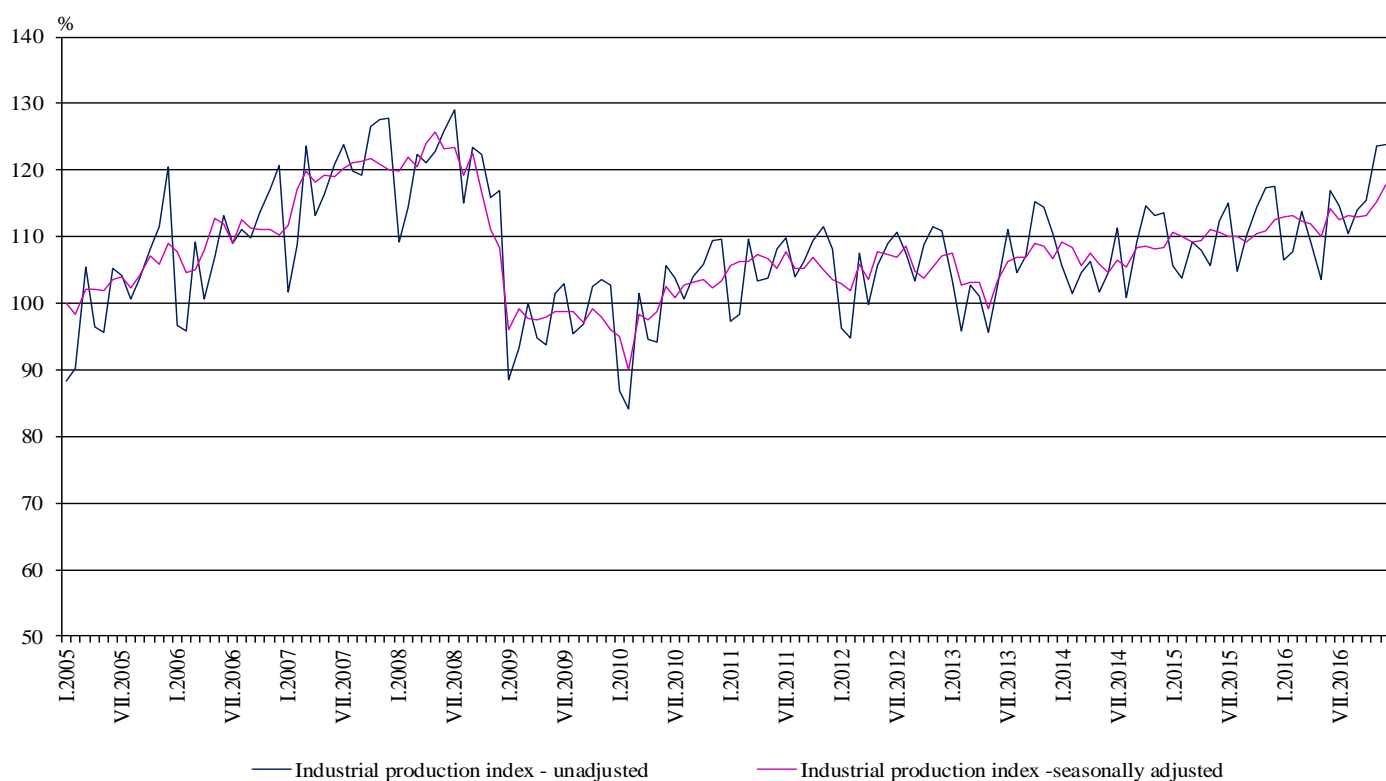


INDUSTRIAL PRODUCTION INDICES IN DECEMBER 2016¹

According to the preliminary data the Industrial Production Index², seasonally adjusted³, increased by 2.1% in December 2016 as compared to November 2016.

In December 2016 working day adjusted⁴ Industrial Production Index rose by 6.9% in comparison with the same month of 2015.

Figure 1. Industrial Production Indices (2010 = 100)



¹ December 2016 data are preliminary.

² Monthly Industrial Production and Industrial turnover indices measure changes in production and turnover values of industrial enterprises. This information can be used to assess the current economic development and for short-term forecasts. Indices do not measure the actual production level, it aims to measure the average change in value of production between two points of time. Indices are compiled on the base of information collected through representative sampling survey on industrial enterprises. The sample covers enterprises with annual turnover more than 97% of total turnover in industry.

Industrial production indices are calculated at constant base year that is to say they are weighted with the structure of the value added at factor costs in the base year.

³ Seasonal adjustment is a statistical method, which eliminates the seasonal component of time series.

⁴ Working day adjustment is an adjustment for variations caused by calendar effects, different number of calendar and working days in the months, national holidays and outliers (for example the presence of more non-working days in May could contribute to the decline in the production in some activities).

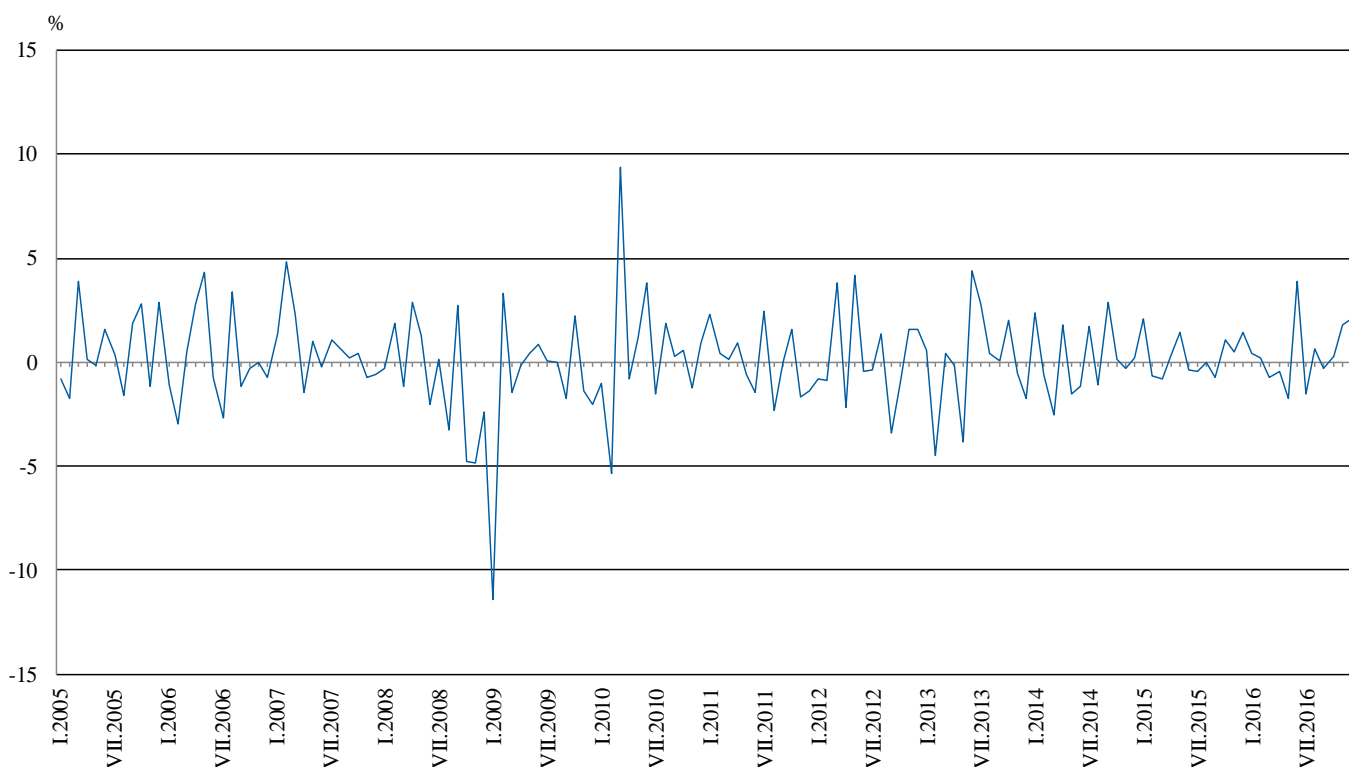


Monthly comparisons

In December 2016 as compared to November 2016, the seasonally adjusted Industrial Production Index increased in the manufacturing by 3.9% and in the electricity, gas, steam and air conditioning supply by 1.3%, while in the mining and quarrying industry a decrease by 1.4% was seen.

The most significant increases of production in the manufacturing were registered in the manufacture of fabricated metal products, except machinery and equipment by 15.0%, in the manufacture of wearing apparel by 6.4%, in the manufacture of motor vehicles, trailers and semi-trailers and in manufacture of other transport equipment by 5.0%. There were decreases in manufacture of leather and related products by 9.1%, in the manufacture of paper and paper products by 5.9%, in the manufacture of computer, electronic and optical products by 4.6%, in the printing and reproduction of recorded media and in the manufacture of chemicals and chemical products by 4.4%.

**Figure 2. Changes of Industrial Production Indices compared to the previous month
(Seasonally adjusted)**



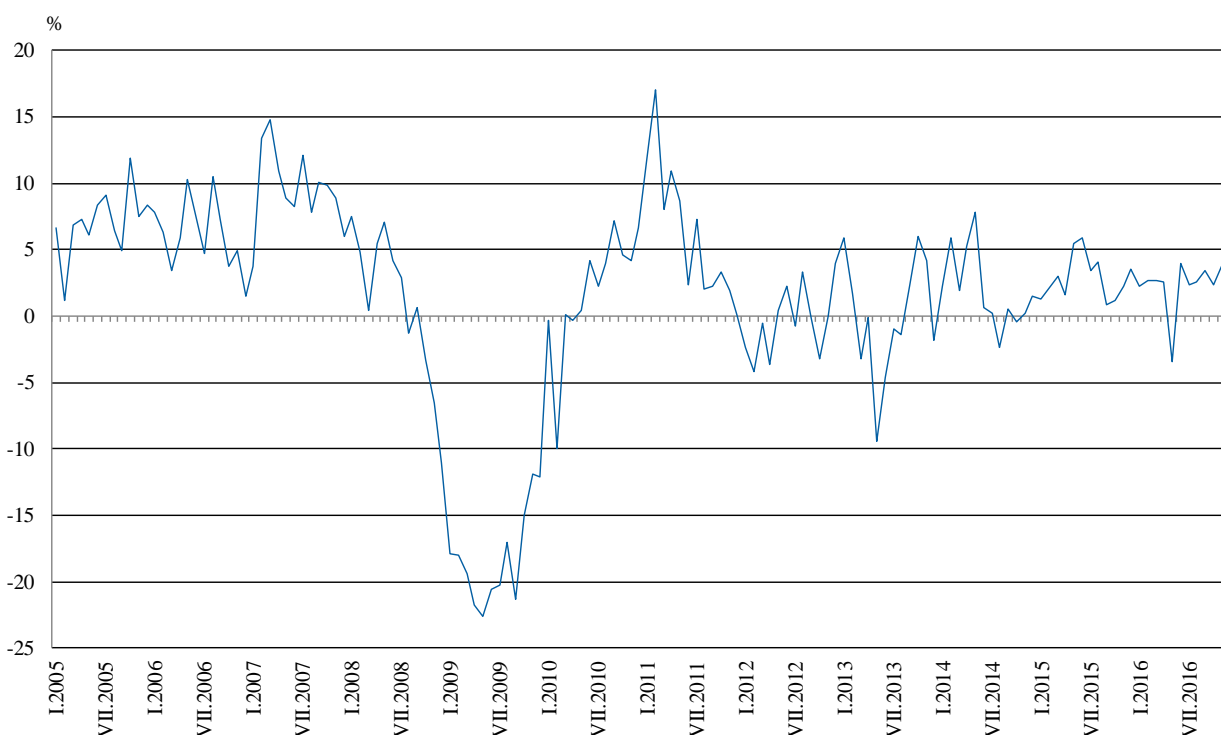


Annual comparisons

On annual basis in December 2016 Industrial Production Index calculated from working day adjusted data increased in the manufacturing by 9.6% and in the mining and quarrying industry by 2.5%, while in the electricity, gas, steam and air conditioning supply a decrease by 0.3% was seen.

In the manufacturing, the more significant increases compared to the same month of the previous year were seen in the manufacture of fabricated metal products, except machinery and equipment by 34.5%, in the manufacture of basic metals by 26.4%, in the manufacture of computer, electronic and optical products by 20.3%, in the manufacture of machinery and equipment by 20.2%. Decreases were registered in the manufacture of wood and of products of wood and cork, except furniture; manufacture of articles of straw and plaiting materials by 16.7%, in the manufacture of other transport equipment by 15.9%, in the manufacture of tobacco products by 12.7%, in the manufacture of other non-metallic mineral products by 8.5%.

Figure 3. Changes of Industrial Production Indices compared to the same month of the previous year (Working day adjusted)



The final data on Industrial Production and Turnover Indices for November 2016 can be found on the NSI website: <http://www.nsi.bg/en>.

Annex

Table 1
Changes of Industrial Production Indices compared to the previous month^{1,2}
(Per cent)

Economic Activities	NACE.BG - 2008	2016					
		VII	VIII	IX	X	XI	XII
Industry	B_TO_E36	-1.5	0.6	-0.3	0.3	1.8	2.1
Mining and quarrying	B	0.4	0.0	0.8	1.5	2.4	-1.4
Mining of coal and lignite	B05	5.7	-8.7	0.9	16.4	9.8	-10.2
Extraction of crude petroleum and natural gas	B06
Mining of metal ores	B07	-2.9	-3.6	9.7	-7.5	14.1	-7.4
Other mining and quarrying	B08	1.9	3.6	-9.7	-4.8	6.6	-12.4
Mining support service activities	B09
Manufacturing	C	-1.5	0.7	0.1	-0.3	2.8	3.9
Manufacture of food products	C10	0.6	2.5	-5.4	2.8	-1.2	1.8
Manufacture of beverages	C11	5.1	-2.1	-2.3	2.9	-2.9	1.8
Manufacture of tobacco products	C12	17.9	-5.1	-11.6	15.0	12.7	3.7
Manufacture of textiles	C13	-4.4	-0.7	2.0	2.2	0.6	-1.4
Manufacture of wearing apparel	C14	0.3	-5.9	6.2	-3.6	-6.4	6.4
Manufacture of leather and related products	C15	-2.0	-8.2	14.3	-4.6	6.6	-9.1
Manufacture of wood and of products of wood and cork, except furniture; manufacture of articles of straw and plaiting materials	C16	-3.5	1.6	-9.4	7.1	-2.2	3.1
Manufacture of paper and paper products	C17	-2.5	1.8	-3.4	1.2	7.0	-5.9
Printing and reproduction of recorded media	C18	2.0	-3.4	-0.5	6.5	1.9	-4.4
Manufacture of coke and refined petroleum products	C19
Manufacture of chemicals and chemical products	C20	17.0	-0.6	-4.4	7.5	-7.2	-4.4
Manufacture of basic pharmaceutical products and pharmaceutical preparations	C21	-4.5	-3.1	-6.4	7.1	7.4	-0.5
Manufacture of rubber and plastic products	C22	-1.2	0.2	-2.7	6.1	3.3	3.0
Manufacture of other non-metallic mineral products	C23	-1.0	1.3	-2.7	1.6	2.0	2.8
Manufacture of basic metals	C24	6.9	5.3	4.5	2.7	4.0	2.8
Manufacture of fabricated metal products, except machinery and equipment	C25	-19.1	5.4	12.6	-17.4	14.5	15.0
Manufacture of computer, electronic and optical products	C26	2.0	1.0	-1.1	12.6	-1.5	-4.6
Manufacture of electrical equipment	C27	0.3	-2.3	-0.8	1.0	-0.7	-0.5
Manufacture of machinery and equipment n.e.c.	C28	2.3	-4.8	-3.7	6.3	9.9	2.2
Manufacture of motor vehicles, trailers and semi-trailers	C29	-3.1	7.4	-6.4	2.6	1.6	5.0
Manufacture of other transport equipment	C30	0.7	22.4	-15.4	-9.0	0.6	5.0
Manufacture of furniture	C31	8.4	-4.1	1.8	3.1	1.6	1.7
Other manufacturing	C32	-9.0	14.7	0.4	-4.3	10.7	4.8
Repair and installation of machinery and equipment	C33	6.8	-7.9	16.5	-10.7	-0.7	1.7
Electricity, gas, steam and air conditioning supply	D	-3.1	0.7	-1.9	-0.3	-1.8	1.3
Electricity, gas, steam and air conditioning supply	D35	-3.1	0.7	-1.9	-0.3	-1.8	1.3

¹ Seasonally adjusted.

² ".." - Confidential data.



Table 2

Changes of Industrial Production Indices compared to the same month of the previous year^{1,2}
(Per cent)

Economic Activities	NACE.BG - 2008	2016					
		VII	VIII	IX	X	XI	XII
Industry	B_TO_E36	2.3	2.6	3.4	2.3	3.8	6.9
Mining and quarrying	B	0.0	1.8	-0.5	9.0	9.8	2.5
Mining of coal and lignite	B05	-13.5	-26.6	-24.8	12.3	14.8	-6.4
Extraction of crude petroleum and natural gas	B06
Mining of metal ores	B07	13.0	20.5	19.6	10.4	14.3	18.2
Other mining and quarrying	B08	-11.0	1.4	-11.6	-21.9	-6.5	-33.0
Mining support service activities	B09
Manufacturing	C	2.7	4.3	4.7	1.5	4.3	9.6
Manufacture of food products	C10	7.0	8.3	1.1	1.4	1.3	4.1
Manufacture of beverages	C11	10.2	6.5	5.2	8.7	2.8	8.3
Manufacture of tobacco products	C12	-12.0	-18.4	-23.2	-19.2	-12.3	-12.7
Manufacture of textiles	C13	-5.0	-2.8	-2.1	-5.9	0.0	-0.2
Manufacture of wearing apparel	C14	6.4	-1.6	5.4	-4.1	-11.1	-3.1
Manufacture of leather and related products	C15	-12.0	-19.4	-3.7	-4.3	9.1	-8.0
Manufacture of wood and of products of wood and cork, except furniture; manufacture of articles of straw and plaiting materials	C16	-5.2	-8.2	-16.9	-9.8	-17.4	-16.7
Manufacture of paper and paper products	C17	9.1	10.8	-4.0	-6.0	2.7	5.0
Printing and reproduction of recorded media	C18	4.8	1.0	0.6	5.1	-6.1	1.0
Manufacture of coke and refined petroleum products	C19
Manufacture of chemicals and chemical products	C20	0.6	-0.7	4.9	10.3	16.2	13.5
Manufacture of basic pharmaceutical products and pharmaceutical preparations	C21	-5.8	-6.5	-16.1	-8.6	0.1	-1.2
Manufacture of rubber and plastic products	C22	7.6	11.2	4.1	8.8	14.7	16.6
Manufacture of other non-metallic mineral products	C23	-7.4	-3.1	-8.6	-4.4	-6.5	-8.5
Manufacture of basic metals	C24	-2.5	-3.2	18.0	13.7	14.6	26.4
Manufacture of fabricated metal products, except machinery and equipment	C25	14.6	20.4	40.7	4.6	12.3	34.5
Manufacture of computer, electronic and optical products	C26	3.9	6.1	11.2	15.3	19.6	20.3
Manufacture of electrical equipment	C27	3.3	-0.5	1.2	0.0	-1.0	1.1
Manufacture of machinery and equipment n.e.c.	C28	5.8	0.0	-3.7	2.8	19.3	20.2
Manufacture of motor vehicles, trailers and semi-trailers	C29	2.3	23.8	1.6	6.1	10.0	16.2
Manufacture of other transport equipment	C30	-6.4	6.7	-19.6	-27.1	-26.0	-15.9
Manufacture of furniture	C31	7.0	6.5	-2.0	7.3	6.6	10.8
Other manufacturing	C32	1.2	20.6	26.3	13.7	24.0	18.2
Repair and installation of machinery and equipment	C33	-3.3	-5.8	22.5	-8.1	-12.7	4.8
Electricity, gas, steam and air conditioning supply	D	-0.7	-1.2	0.5	1.1	0.5	-0.3
Electricity, gas, steam and air conditioning supply	D35	-0.7	-1.2	0.5	1.1	0.5	-0.3

¹ Working day adjusted.

² ".." - Confidential data.

Table 3

Industrial Production Indices¹
(Seasonally adjusted, 2010 = 100)

NACE.BG - 2008	2015	2016											
	XII	I	II	III	IV	V	VI	VII	VIII	IX	X	XI	XII
B_TO_E36	112.5	113.0	113.2	112.4	111.9	110.0	114.2	112.5	113.2	112.9	113.2	115.3	117.7
B	100.3	102.2	101.0	100.8	100.1	98.5	98.7	99.1	99.2	99.9	101.5	103.9	102.4
B05	116.8	112.6	101.1	86.0	94.7	99.5	94.5	99.8	91.1	92.0	107.1	117.6	105.6
B06
B07	87.1	93.6	89.3	104.0	103.5	91.5	102.8	99.8	96.2	105.5	97.6	111.3	103.0
B08	129.4	99.2	122.0	114.0	108.5	105.3	104.6	106.5	110.3	99.6	94.8	101.1	88.5
B09
C	118.6	117.9	119.4	118.2	117.1	113.5	119.7	117.9	118.7	118.9	118.6	121.9	126.6
C10	89.0	93.5	90.5	89.4	92.1	92.5	91.6	92.2	94.6	89.5	92.0	90.9	92.6
C11	97.7	104.7	106.8	102.8	108.5	93.6	103.5	108.8	106.6	104.1	107.1	103.9	105.8
C12	107.4	110.9	106.2	88.2	67.6	55.1	66.2	78.0	74.0	65.4	75.3	84.8	88.0
C13	108.7	111.3	118.6	114.2	118.2	116.9	111.0	106.2	105.4	107.5	109.9	110.6	109.1
C14	100.7	100.1	98.4	100.0	98.7	97.1	100.2	100.6	94.7	100.6	96.9	90.8	96.6
C15	73.7	73.7	74.4	75.4	78.1	71.5	72.2	70.8	65.0	74.3	70.8	75.5	68.6
C16	103.6	96.5	104.0	99.7	94.8	90.1	90.4	87.2	88.6	80.3	86.0	84.1	86.6
C17	123.1	117.6	127.3	128.6	129.4	128.3	133.0	129.6	131.9	127.4	128.9	138.0	129.8
C18	116.5	130.3	130.2	122.9	117.7	110.9	115.7	118.0	114.0	113.4	120.8	123.0	117.6
C19
C20	98.3	104.5	113.5	101.3	107.4	109.2	105.7	123.6	122.8	117.4	126.2	117.2	112.0
C21	151.5	151.4	158.6	153.5	145.9	139.3	147.7	141.1	136.8	128.0	137.1	147.3	146.5
C22	135.2	142.9	146.5	145.2	147.2	138.3	143.6	141.9	142.3	138.5	146.9	151.6	156.1
C23	138.2	130.9	129.6	128.8	125.9	120.3	122.5	121.2	122.8	119.5	121.4	123.8	127.2
C24	93.1	90.5	88.0	87.6	85.6	82.0	84.8	90.6	95.4	99.8	102.4	106.5	109.4
C25	147.6	174.7	152.5	155.2	154.6	134.5	183.4	148.4	156.4	176.2	145.5	166.6	191.6
C26	136.8	156.3	141.0	143.9	152.0	148.7	152.4	155.4	157.0	155.2	174.8	172.1	164.2
C27	143.3	147.9	155.5	155.9	144.0	143.8	150.7	151.1	147.7	146.6	148.1	147.0	146.3
C28	138.2	141.5	140.9	142.0	137.6	135.5	145.1	148.4	141.2	136.0	144.6	158.9	162.4
C29	157.8	158.9	177.4	176.3	170.0	176.2	171.9	166.6	178.9	167.5	171.9	174.7	183.3
C30	98.8	93.6	105.6	103.5	105.3	86.4	83.8	84.3	103.2	87.3	79.5	79.9	83.9
C31	126.9	132.1	130.5	134.3	138.5	131.0	123.5	133.9	128.5	130.9	135.0	137.1	139.5
C32	206.5	222.3	200.4	214.3	195.9	205.7	207.2	188.4	216.1	216.9	207.6	229.9	241.0
C33	82.7	90.0	77.6	76.0	83.9	87.6	83.4	89.1	82.0	95.6	85.3	84.7	86.2
D	102.0	105.3	102.1	101.9	103.6	106.7	107.2	103.9	104.6	102.6	102.3	100.4	101.8
D35	102.0	105.3	102.1	101.9	103.6	106.7	107.2	103.9	104.6	102.6	102.3	100.4	101.8

¹ ".." - Confidential data.

Table 4

Industrial Production Indices¹
(Working day adjusted, 2010 = 100)

NACE.BG - 2008	2013	2014	2015	2016											
	XII	XII	XII	I	II	III	IV	V	VI	VII	VIII	IX	X	XI	XII
B_TO_E36	110.6	112.2	116.1	108.2	106.5	112.4	109.9	103.7	115.9	116.3	109.2	113.0	117.3	122.6	124.2
B	114.4	110.7	109.8	103.5	95.6	95.4	94.8	89.9	93.2	98.0	96.6	104.6	110.4	118.8	112.5
B05	144.9	123.1	136.8	128.0	98.7	71.1	77.4	81.9	69.9	92.2	89.4	99.9	132.0	135.5	128.1
B06
B07	101.6	103.0	87.1	93.6	89.3	104.0	103.5	91.5	102.8	99.8	96.2	105.5	97.6	111.3	103.0
B08	87.3	116.1	135.1	59.9	86.7	101.9	107.7	110.0	114.4	120.9	123.0	109.5	110.9	113.3	90.4
B09
C	101.1	107.0	114.7	103.1	107.8	117.0	118.2	111.5	127.7	126.0	115.7	121.8	125.5	129.1	125.7
C10	92.6	94.4	92.9	78.9	78.9	87.7	89.0	89.8	93.6	93.2	97.4	96.1	101.7	97.8	96.7
C11	105.3	100.1	100.3	66.6	74.4	95.6	114.1	101.7	126.9	137.0	135.9	111.4	93.5	91.6	108.6
C12	102.0	119.0	109.3	85.0	84.2	89.4	60.1	51.5	71.5	94.1	72.6	68.3	73.5	85.3	95.5
C13	81.3	97.5	94.4	95.2	113.9	126.1	130.4	133.2	123.1	111.4	83.6	103.1	112.6	113.8	94.2
C14	98.3	91.3	100.5	104.8	95.5	93.5	92.3	88.2	107.8	117.3	91.2	97.8	99.6	87.4	97.4
C15	65.8	79.5	68.4	74.9	71.9	73.3	68.7	58.5	73.8	86.6	64.4	83.3	73.5	78.0	63.0
C16	84.2	86.9	99.0	75.1	87.4	97.1	92.5	89.0	98.4	96.2	90.5	86.4	97.2	92.9	82.5
C17	109.7	109.3	118.0	109.4	120.0	132.3	131.5	130.1	139.2	134.9	131.5	129.1	129.7	138.3	123.9
C18	113.5	118.2	129.6	112.9	118.7	120.1	113.8	106.4	117.9	116.6	108.2	114.2	129.4	140.1	130.8
C19
C20	94.4	105.5	96.3	97.0	106.3	110.8	111.3	109.4	109.7	125.5	116.9	117.7	125.5	120.8	109.4
C21	128.6	153.9	155.2	136.5	160.6	160.3	152.1	133.4	153.3	131.6	118.8	122.2	146.4	155.2	153.4
C22	98.8	103.1	115.5	120.8	128.5	144.3	148.7	138.9	156.5	156.0	142.4	145.6	163.6	158.4	134.6
C23	92.9	99.8	123.3	89.7	103.3	126.0	132.9	127.3	134.9	130.6	131.0	128.5	135.4	133.7	112.8
C24	74.1	79.5	70.9	93.9	84.2	82.0	99.9	80.4	79.6	115.6	89.2	90.5	117.5	112.4	89.7
C25	107.1	134.6	165.9	135.8	133.8	152.3	149.5	124.7	199.2	153.1	150.4	187.0	150.7	186.0	223.1
C26	118.2	143.7	150.0	139.7	129.6	148.5	150.3	150.2	160.6	160.1	137.8	155.5	182.9	183.8	180.4
C27	106.4	117.4	130.2	135.7	149.3	163.3	142.7	138.7	157.0	160.7	129.3	146.2	162.7	161.0	131.6
C28	138.3	126.5	129.3	125.4	135.4	151.4	139.8	133.0	157.6	158.3	127.8	136.5	147.8	171.0	155.4
C29	87.6	135.1	139.8	153.7	173.5	187.4	175.0	176.2	182.9	166.0	148.0	169.7	185.2	190.6	162.4
C30	80.7	85.4	103.7	72.0	96.2	113.7	112.8	99.7	86.8	82.4	86.8	78.2	73.7	71.7	87.2
C31	118.2	116.4	127.3	112.9	115.5	129.9	135.7	128.4	124.1	138.9	129.3	138.4	149.7	151.0	141.0
C32	111.5	124.0	178.3	188.4	171.2	217.5	189.7	206.3	236.0	190.3	221.9	230.4	239.7	242.6	210.8
C33	111.9	105.2	111.3	64.8	65.4	74.1	74.7	81.3	83.9	89.4	80.4	100.0	91.4	99.8	116.6
D	140.7	134.1	128.7	127.5	112.5	110.4	93.7	87.6	92.5	94.8	95.1	90.4	96.5	108.8	128.3
D35	140.7	134.1	128.7	127.5	112.5	110.4	93.7	87.6	92.5	94.8	95.1	90.4	96.5	108.8	128.3

¹ "..." - Confidential data.