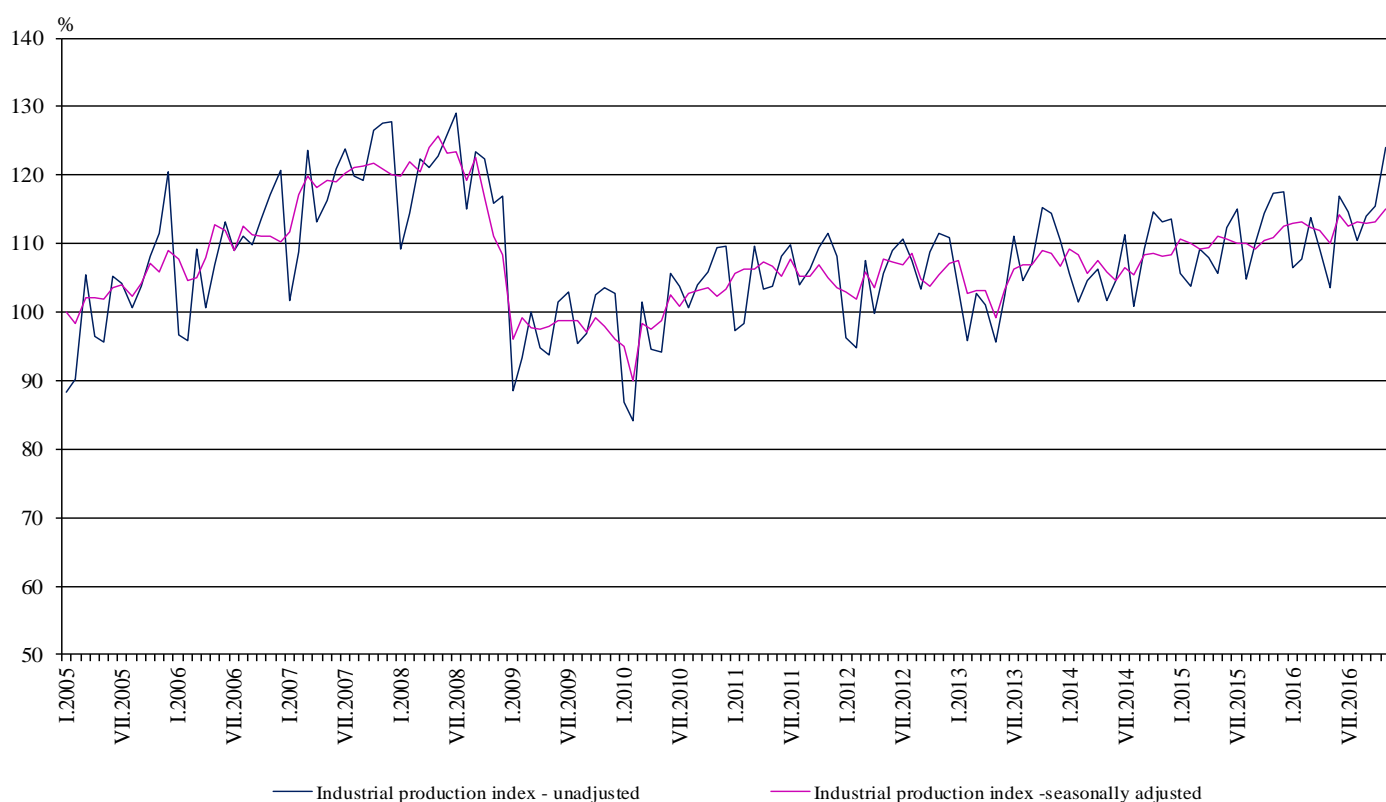


## INDUSTRIAL PRODUCTION INDICES IN NOVEMBER 2016<sup>1</sup>

According to the preliminary data the Industrial Production Index<sup>2</sup>, seasonally adjusted<sup>3</sup>, increased by 1.6% in November 2016 as compared to October 2016.

In November 2016 working day adjusted<sup>4</sup> Industrial Production Index rose by 4.3% in comparison with the same month of 2015.

**Figure 1. Industrial Production Indices (2010 = 100)**



<sup>1</sup> November 2016 data are preliminary.

<sup>2</sup> Monthly Industrial Production and Industrial turnover indices measure changes in production and turnover values of industrial enterprises. This information can be used to assess the current economic development and for short-term forecasts. Indices do not measure the actual production level, it aims to measure the average change in value of production between two points of time. Indices are compiled on the base of information collected through representative sampling survey on industrial enterprises. The sample covers enterprises with annual turnover more than 97% of total turnover in industry.

Industrial production indices are calculated at constant base year that is to say they are weighted with the structure of the value added at factor costs in the base year.

<sup>3</sup> Seasonal adjustment is a statistical method, which eliminates the seasonal component of time series.

<sup>4</sup> Working day adjustment is an adjustment for variations caused by calendar effects, different number of calendar and working days in the months, national holidays and outliers (for example the presence of more non-working days in May could contribute to the decline in the production in some activities).

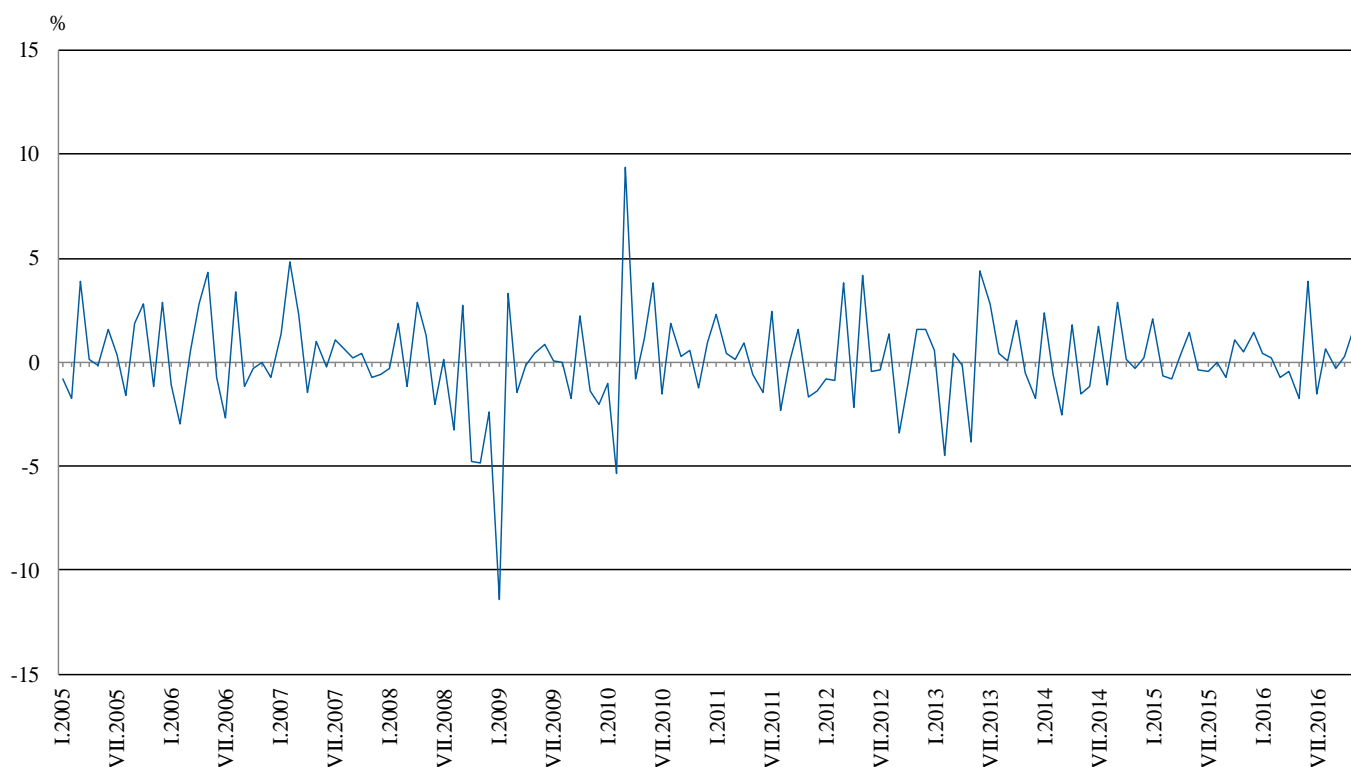


## Monthly comparisons

In November 2016 as compared to October 2016, the seasonally adjusted Industrial Production Index increased in the manufacturing by 2.4% and in the mining and quarrying industry by 2.2%, while in the electricity, gas, steam and air conditioning supply a decrease by 1.3% was seen.

The most significant increases of production in the manufacturing were registered in the manufacture of fabricated metal products, except machinery and equipment by 16.8%, in the manufacture of tobacco products by 12.8%, in the manufacture of machinery and equipment by 9.6%, in the manufacture of basic pharmaceutical products and pharmaceutical preparations by 9.0%. There were decreases in the manufacture of wearing apparel by 7.1%, in the manufacture of chemicals and chemical products by 6.4%, in the manufacture of wood and of products of wood and cork, except furniture; manufacture of articles of straw and plaiting materials by 4.6%, in the manufacture of beverages by 3.7%.

**Figure 2. Changes of Industrial Production Indices compared to the previous month  
(Seasonally adjusted)**



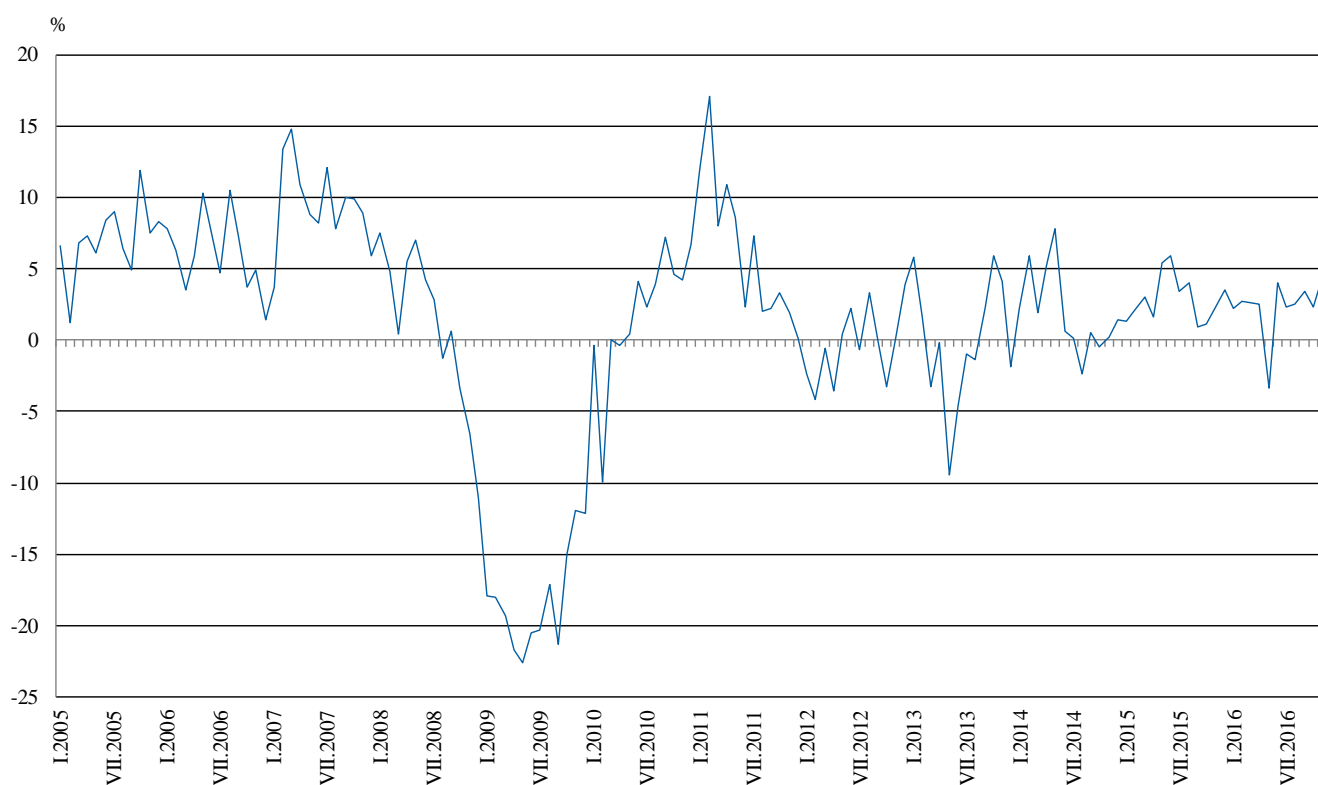


### Annual comparisons

On annual basis in November 2016 Industrial Production Index calculated from working day adjusted data increased in the mining and quarrying industry by 9.8%, in the manufacturing by 4.9% and in the electricity, gas, steam and air conditioning supply by 1.0%.

In the manufacturing, the more significant increases compared to the same month of the previous year were seen in the manufacture of computer, electronic and optical products by 20.0%, in the manufacture of machinery and equipment by 19.8%, in the manufacture of chemicals and chemical products by 17.1%, in the manufacture of fabricated metal products, except machinery and equipment by 16.4%. Decreases were registered in the manufacture of other transport equipment by 26.0%, in the manufacture of wood and of products of wood and cork, except furniture; manufacture of articles of straw and plaiting materials by 19.3%, in the repair and installation of machinery and equipment by 13.0%, in the manufacture of tobacco products by 12.3%.

**Figure 3. Changes of Industrial Production Indices compared to the same month of the previous year (Working day adjusted)**



The final data on Industrial Production and Turnover Indices for October 2016 can be found on the NSI website: <http://www.nsi.bg/en>.

Annex

**Table 1**  
**Changes of Industrial Production Indices compared to the previous month<sup>1,2</sup>**  
(Per cent)

Economic Activities	NACE.BG - 2008	2016					
		VI	VII	VIII	IX	X	XI
<b>Industry</b>	<b>B_TO_E36</b>	<b>3.9</b>	<b>-1.5</b>	<b>0.6</b>	<b>-0.3</b>	<b>0.3</b>	<b>1.6</b>
<b>Mining and quarrying</b>	<b>B</b>	<b>0.2</b>	<b>0.4</b>	<b>0.0</b>	<b>0.8</b>	<b>1.5</b>	<b>2.2</b>
Mining of coal and lignite	B05	-5.1	5.7	-8.7	0.9	16.4	9.7
Extraction of crude petroleum and natural gas	B06	..	..	..	..	..	..
Mining of metal ores	B07	12.2	-2.9	-3.6	9.7	-7.5	14.1
Other mining and quarrying	B08	-0.7	1.9	3.6	-9.7	-4.8	7.4
Mining support service activities	B09	..	..	..	..	..	..
<b>Manufacturing</b>	<b>C</b>	<b>5.4</b>	<b>-1.5</b>	<b>0.7</b>	<b>0.1</b>	<b>-0.3</b>	<b>2.4</b>
Manufacture of food products	C10	-0.9	0.6	2.5	-5.4	2.8	-0.8
Manufacture of beverages	C11	10.5	5.1	-2.1	-2.3	2.9	-3.7
Manufacture of tobacco products	C12	20.1	17.9	-5.1	-11.6	15.0	12.8
Manufacture of textiles	C13	-5.0	-4.4	-0.7	2.0	2.2	0.8
Manufacture of wearing apparel	C14	3.2	0.3	-5.9	6.2	-3.6	-7.1
Manufacture of leather and related products	C15	1.0	-2.0	-8.2	14.3	-4.6	7.1
Manufacture of wood and of products of wood and cork, except furniture; manufacture of articles of straw and plaiting materials	C16	0.3	-3.5	1.6	-9.4	7.1	-4.6
Manufacture of paper and paper products	C17	3.7	-2.5	1.8	-3.4	1.2	7.2
Printing and reproduction of recorded media	C18	4.3	2.0	-3.4	-0.5	6.5	1.6
Manufacture of coke and refined petroleum products	C19	..	..	..	..	..	..
Manufacture of chemicals and chemical products	C20	-3.2	17.0	-0.6	-4.4	7.5	-6.4
Manufacture of basic pharmaceutical products and pharmaceutical preparations	C21	6.1	-4.5	-3.1	-6.4	7.1	9.0
Manufacture of rubber and plastic products	C22	3.9	-1.2	0.2	-2.7	6.1	2.9
Manufacture of other non-metallic mineral products	C23	1.8	-1.0	1.3	-2.7	1.6	1.0
Manufacture of basic metals	C24	3.4	6.9	5.3	4.5	2.7	1.4
Manufacture of fabricated metal products, except machinery and equipment	C25	36.4	-19.1	5.4	12.6	-17.4	16.8
Manufacture of computer, electronic and optical products	C26	2.5	2.0	1.0	-1.1	12.6	-1.2
Manufacture of electrical equipment	C27	4.7	0.3	-2.3	-0.8	1.0	-0.4
Manufacture of machinery and equipment n.e.c.	C28	7.1	2.3	-4.8	-3.7	6.3	9.6
Manufacture of motor vehicles, trailers and semi-trailers	C29	-2.4	-3.1	7.4	-6.4	2.6	1.3
Manufacture of other transport equipment	C30	-3.0	0.7	22.4	-15.4	-9.0	1.0
Manufacture of furniture	C31	-5.7	8.4	-4.1	1.8	3.1	1.1
Other manufacturing	C32	0.7	-9.0	14.7	0.4	-4.3	10.4
Repair and installation of machinery and equipment	C33	-4.7	6.8	-7.9	16.5	-10.7	-0.9
<b>Electricity, gas, steam and air conditioning supply</b>	<b>D</b>	<b>0.4</b>	<b>-3.1</b>	<b>0.7</b>	<b>-1.9</b>	<b>-0.3</b>	<b>-1.3</b>
Electricity, gas, steam and air conditioning supply	D35	0.4	-3.1	0.7	-1.9	-0.3	-1.3

<sup>1</sup> Seasonally adjusted.

<sup>2</sup> ".." - Confidential data.



**Table 2**  
**Changes of Industrial Production Indices compared to the same month of the previous year<sup>1,2</sup>**  
(Per cent)

Economic Activities	NACE.BG - 2008	2016					
		VI	VII	VIII	IX	X	XI
<b>Industry</b>	<b>B_TO_E36</b>	<b>4.0</b>	<b>2.3</b>	<b>2.6</b>	<b>3.4</b>	<b>2.3</b>	<b>4.3</b>
<b>Mining and quarrying</b>	<b>B</b>	<b>-3.9</b>	<b>0.0</b>	<b>1.8</b>	<b>-0.5</b>	<b>9.0</b>	<b>9.8</b>
Mining of coal and lignite	B05	-16.2	-13.5	-26.6	-24.8	12.3	14.8
Extraction of crude petroleum and natural gas	B06	..	..	..	..	..	..
Mining of metal ores	B07	3.0	13.0	20.5	19.6	10.4	14.3
Other mining and quarrying	B08	-13.4	-11.0	1.4	-11.6	-21.9	-6.6
Mining support service activities	B09	..	..	..	..	..	..
<b>Manufacturing</b>	<b>C</b>	<b>5.6</b>	<b>2.7</b>	<b>4.3</b>	<b>4.7</b>	<b>1.5</b>	<b>4.9</b>
Manufacture of food products	C10	2.5	7.0	8.3	1.1	1.4	1.7
Manufacture of beverages	C11	2.8	10.2	6.5	5.2	8.7	1.9
Manufacture of tobacco products	C12	-32.6	-12.0	-18.4	-23.2	-19.2	-12.3
Manufacture of textiles	C13	2.1	-5.0	-2.8	-2.1	-5.9	0.1
Manufacture of wearing apparel	C14	2.4	6.4	-1.6	5.4	-4.1	-11.3
Manufacture of leather and related products	C15	-3.1	-12.0	-19.4	-3.7	-4.3	9.4
Manufacture of wood and of products of wood and cork, except furniture; manufacture of articles of straw and plaiting materials	C16	-7.2	-5.2	-8.2	-16.9	-9.8	-19.3
Manufacture of paper and paper products	C17	5.8	9.1	10.8	-4.0	-6.0	2.7
Printing and reproduction of recorded media	C18	-1.5	4.8	1.0	0.6	5.1	-6.4
Manufacture of coke and refined petroleum products	C19	..	..	..	..	..	..
Manufacture of chemicals and chemical products	C20	-6.7	0.6	-0.7	4.9	10.3	17.1
Manufacture of basic pharmaceutical products and pharmaceutical preparations	C21	3.1	-5.8	-6.5	-16.1	-8.6	2.4
Manufacture of rubber and plastic products	C22	8.2	7.6	11.2	4.1	8.8	14.8
Manufacture of other non-metallic mineral products	C23	-4.0	-7.4	-3.1	-8.6	-4.4	-6.7
Manufacture of basic metals	C24	-14.0	-2.5	-3.2	18.0	13.7	14.8
Manufacture of fabricated metal products, except machinery and equipment	C25	59.0	14.6	20.4	40.7	4.6	16.4
Manufacture of computer, electronic and optical products	C26	0.7	3.9	6.1	11.2	15.3	20.0
Manufacture of electrical equipment	C27	10.8	3.3	-0.5	1.2	0.0	-0.8
Manufacture of machinery and equipment n.e.c.	C28	0.5	5.8	0.0	-3.7	2.8	19.8
Manufacture of motor vehicles, trailers and semi-trailers	C29	9.6	2.3	23.8	1.6	6.1	9.9
Manufacture of other transport equipment	C30	-3.9	-6.4	6.7	-19.6	-27.1	-26.0
Manufacture of furniture	C31	-0.5	7.0	6.5	-2.0	7.3	6.3
Other manufacturing	C32	19.3	1.2	20.6	26.3	13.7	23.9
Repair and installation of machinery and equipment	C33	-9.4	-3.3	-5.8	22.5	-8.1	-13.0
<b>Electricity, gas, steam and air conditioning supply</b>	<b>D</b>	<b>1.6</b>	<b>-0.7</b>	<b>-1.2</b>	<b>0.5</b>	<b>1.1</b>	<b>1.0</b>
Electricity, gas, steam and air conditioning supply	D35	1.6	-0.7	-1.2	0.5	1.1	1.0

<sup>1</sup> Working day adjusted.

<sup>2</sup> ".." - Confidential data.

Table 3

**Industrial Production Indices<sup>1</sup>**  
(Seasonally adjusted, 2010 = 100)

NACE.BG - 2008	2015		2016										
	XI	XII	I	II	III	IV	V	VI	VII	VIII	IX	X	XI
<b>B_TO_E36</b>	<b>110.9</b>	<b>112.5</b>	<b>113.0</b>	<b>113.2</b>	<b>112.4</b>	<b>111.9</b>	<b>110.0</b>	<b>114.2</b>	<b>112.5</b>	<b>113.2</b>	<b>112.9</b>	<b>113.2</b>	<b>115.0</b>
<b>B</b>	<b>100.1</b>	<b>100.3</b>	<b>102.2</b>	<b>101.0</b>	<b>100.8</b>	<b>100.1</b>	<b>98.5</b>	<b>98.7</b>	<b>99.1</b>	<b>99.2</b>	<b>99.9</b>	<b>101.5</b>	<b>103.7</b>
<b>B05</b>	105.6	116.8	112.6	101.1	86.0	94.7	99.5	94.5	99.8	91.1	92.0	107.1	117.5
<b>B06</b>	..	..	..	..	..	..	..	..	..	..	..	..	..
<b>B07</b>	97.4	87.1	93.6	89.3	104.0	103.5	91.5	102.8	99.8	96.2	105.5	97.6	111.3
<b>B08</b>	108.8	129.4	99.2	122.0	114.0	108.5	105.3	104.6	106.5	110.3	99.6	94.8	101.8
<b>B09</b>	..	..	..	..	..	..	..	..	..	..	..	..	..
<b>C</b>	<b>117.0</b>	<b>118.6</b>	<b>117.9</b>	<b>119.4</b>	<b>118.2</b>	<b>117.1</b>	<b>113.5</b>	<b>119.7</b>	<b>117.9</b>	<b>118.7</b>	<b>118.9</b>	<b>118.6</b>	<b>121.4</b>
<b>C10</b>	89.6	89.0	93.5	90.5	89.4	92.1	92.5	91.6	92.2	94.6	89.5	92.0	91.2
<b>C11</b>	100.4	97.7	104.7	106.8	102.8	108.5	93.6	103.5	108.8	106.6	104.1	107.1	103.1
<b>C12</b>	100.9	107.4	110.9	106.2	88.2	67.6	55.1	66.2	78.0	74.0	65.4	75.3	84.9
<b>C13</b>	110.5	108.7	111.3	118.6	114.2	118.2	116.9	111.0	106.2	105.4	107.5	109.9	110.8
<b>C14</b>	97.5	100.7	100.1	98.4	100.0	98.7	97.1	100.2	100.6	94.7	100.6	96.9	90.1
<b>C15</b>	70.7	73.7	73.7	74.4	75.4	78.1	71.5	72.2	70.8	65.0	74.3	70.8	75.9
<b>C16</b>	103.4	103.6	96.5	104.0	99.7	94.8	90.1	90.4	87.2	88.6	80.3	86.0	82.0
<b>C17</b>	135.0	123.1	117.6	127.3	128.6	129.4	128.3	133.0	129.6	131.9	127.4	128.9	138.3
<b>C18</b>	132.7	116.5	130.3	130.2	122.9	117.7	110.9	115.7	118.0	114.0	113.4	120.8	122.7
<b>C19</b>	..	..	..	..	..	..	..	..	..	..	..	..	..
<b>C20</b>	100.8	98.3	104.5	113.5	101.3	107.4	109.2	105.7	123.6	122.8	117.4	126.2	118.2
<b>C21</b>	150.5	151.5	151.4	158.6	153.5	145.9	139.3	147.7	141.1	136.8	128.0	137.1	149.4
<b>C22</b>	132.5	135.2	142.9	146.5	145.2	147.2	138.3	143.6	141.9	142.3	138.5	146.9	151.1
<b>C23</b>	132.8	138.2	130.9	129.6	128.8	125.9	120.3	122.5	121.2	122.8	119.5	121.4	122.6
<b>C24</b>	92.5	93.1	90.5	88.0	87.6	85.6	82.0	84.8	90.6	95.4	99.8	102.4	103.9
<b>C25</b>	148.7	147.6	174.7	152.5	155.2	154.6	134.5	183.4	148.4	156.4	176.2	145.5	169.9
<b>C26</b>	145.9	136.8	156.3	141.0	143.9	152.0	148.7	152.4	155.4	157.0	155.2	174.8	172.7
<b>C27</b>	147.8	143.3	147.9	155.5	155.9	144.0	143.8	150.7	151.1	147.7	146.6	148.1	147.5
<b>C28</b>	135.6	138.2	141.5	140.9	142.0	137.6	135.5	145.1	148.4	141.2	136.0	144.6	158.5
<b>C29</b>	157.4	157.8	158.9	177.4	176.3	170.0	176.2	171.9	166.6	178.9	167.5	171.9	174.1
<b>C30</b>	104.3	98.8	93.6	105.6	103.5	105.3	86.4	83.8	84.3	103.2	87.3	79.5	80.3
<b>C31</b>	129.0	126.9	132.1	130.5	134.3	138.5	131.0	123.5	133.9	128.5	130.9	135.0	136.5
<b>C32</b>	186.8	206.5	222.3	200.4	214.3	195.9	205.7	207.2	188.4	216.1	216.9	207.6	229.2
<b>C33</b>	97.3	82.7	90.0	77.6	76.0	83.9	87.6	83.4	89.1	82.0	95.6	85.3	84.5
<b>D</b>	<b>99.5</b>	<b>102.0</b>	<b>105.3</b>	<b>102.1</b>	<b>101.9</b>	<b>103.6</b>	<b>106.7</b>	<b>107.2</b>	<b>103.9</b>	<b>104.6</b>	<b>102.6</b>	<b>102.3</b>	<b>100.9</b>
<b>D35</b>	99.5	102.0	105.3	102.1	101.9	103.6	106.7	107.2	103.9	104.6	102.6	102.3	100.9

<sup>1</sup> ".." - Confidential data.



**Table 4**

**Industrial Production Indices<sup>1</sup>**  
**(Working day adjusted, 2010 = 100)**

NACE.BG - 2008	2013	2014	2015		2016										
	XI	XI	XI	XII	I	II	III	IV	V	VI	VII	VIII	IX	X	XI
<b>B_TO_E36</b>	<b>115.2</b>	<b>115.5</b>	<b>118.0</b>	<b>116.1</b>	<b>108.2</b>	<b>106.5</b>	<b>112.4</b>	<b>109.9</b>	<b>103.7</b>	<b>115.9</b>	<b>116.3</b>	<b>109.2</b>	<b>113.0</b>	<b>117.3</b>	<b>123.1</b>
<b>B</b>	<b>118.8</b>	<b>106.3</b>	<b>108.2</b>	<b>109.8</b>	<b>103.5</b>	<b>95.6</b>	<b>95.4</b>	<b>94.8</b>	<b>89.9</b>	<b>93.2</b>	<b>98.0</b>	<b>96.6</b>	<b>104.6</b>	<b>110.4</b>	<b>118.7</b>
<b>B05</b>	122.0	117.0	118.0	136.8	128.0	98.7	71.1	77.4	81.9	69.9	92.2	89.4	99.9	132.0	135.4
<b>B06</b>	..	..	..	..	..	..	..	..	..	..	..	..	..	..	..
<b>B07</b>	118.8	100.3	97.4	87.1	93.6	89.3	104.0	103.5	91.5	102.8	99.8	96.2	105.5	97.6	111.3
<b>B08</b>	112.9	129.1	121.2	135.1	59.9	86.7	101.9	107.7	110.0	114.4	120.9	123.0	109.5	110.9	113.3
<b>B09</b>	..	..	..	..	..	..	..	..	..	..	..	..	..	..	..
<b>C</b>	<b>114.4</b>	<b>117.1</b>	<b>123.8</b>	<b>114.7</b>	<b>103.1</b>	<b>107.8</b>	<b>117.0</b>	<b>118.2</b>	<b>111.5</b>	<b>127.7</b>	<b>126.0</b>	<b>115.7</b>	<b>121.8</b>	<b>125.5</b>	<b>129.8</b>
<b>C10</b>	102.9	99.6	96.5	92.9	78.9	78.9	87.7	89.0	89.8	93.6	93.2	97.4	96.1	101.7	98.2
<b>C11</b>	91.4	81.1	89.1	100.3	66.6	74.4	95.6	114.1	101.7	126.9	137.0	135.9	111.4	93.5	90.7
<b>C12</b>	89.9	104.3	97.3	109.3	85.0	84.2	89.4	60.1	51.5	71.5	94.1	72.6	68.3	73.5	85.3
<b>C13</b>	99.7	108.8	113.8	94.4	95.2	113.9	126.1	130.4	133.2	123.1	111.4	83.6	103.1	112.6	113.9
<b>C14</b>	106.9	93.9	98.2	100.5	104.8	95.5	93.5	92.3	88.2	107.8	117.3	91.2	97.8	99.6	87.2
<b>C15</b>	74.8	91.5	71.5	68.4	74.9	71.9	73.3	68.7	58.5	73.8	86.6	64.4	83.3	73.5	78.2
<b>C16</b>	114.6	101.3	112.5	99.0	75.1	87.4	97.1	92.5	89.0	98.4	96.2	90.5	86.4	97.2	90.7
<b>C17</b>	118.5	115.9	134.6	118.0	109.4	120.0	132.3	131.5	130.1	139.2	134.9	131.5	129.1	129.7	138.2
<b>C18</b>	101.7	120.4	149.2	129.6	112.9	118.7	120.1	113.8	106.4	117.9	116.6	108.2	114.2	129.4	139.7
<b>C19</b>	..	..	..	..	..	..	..	..	..	..	..	..	..	..	..
<b>C20</b>	104.3	112.9	104.0	96.3	97.0	106.3	110.8	111.3	109.4	109.7	125.5	116.9	117.7	125.5	121.8
<b>C21</b>	139.7	141.6	155.1	155.2	136.5	160.6	160.3	152.1	133.4	153.3	131.6	118.8	122.2	146.4	158.8
<b>C22</b>	121.9	130.0	138.1	115.5	120.8	128.5	144.3	148.7	138.9	156.5	156.0	142.4	145.6	163.6	158.5
<b>C23</b>	121.6	124.9	143.0	123.3	89.7	103.3	126.0	132.9	127.3	134.9	130.6	131.0	128.5	135.4	133.4
<b>C24</b>	116.7	98.6	98.2	70.9	93.9	84.2	82.0	99.9	80.4	79.6	115.6	89.2	90.5	117.5	112.7
<b>C25</b>	125.0	133.6	165.6	165.9	135.8	133.8	152.3	149.5	124.7	199.2	153.1	150.4	187.0	150.7	192.7
<b>C26</b>	139.8	140.0	153.7	150.0	139.7	129.6	148.5	150.3	150.2	160.6	160.1	137.8	155.5	182.9	184.4
<b>C27</b>	134.2	143.3	162.6	130.2	135.7	149.3	163.3	142.7	138.7	157.0	160.7	129.3	146.2	162.7	161.2
<b>C28</b>	145.3	166.3	143.4	129.3	125.4	135.4	151.4	139.8	133.0	157.6	158.3	127.8	136.5	147.8	171.8
<b>C29</b>	123.6	159.3	173.3	139.8	153.7	173.5	187.4	175.0	176.2	182.9	166.0	148.0	169.7	185.2	190.5
<b>C30</b>	77.8	74.8	96.9	103.7	72.0	96.2	113.7	112.8	99.7	86.8	82.4	86.8	78.2	73.7	71.7
<b>C31</b>	134.5	135.9	141.6	127.3	112.9	115.5	129.9	135.7	128.4	124.1	138.9	129.3	138.4	149.7	150.6
<b>C32</b>	168.3	153.8	195.7	178.3	188.4	171.2	217.5	189.7	206.3	236.0	190.3	221.9	230.4	239.7	242.5
<b>C33</b>	83.9	121.0	114.3	111.3	64.8	65.4	74.1	74.7	81.3	83.9	89.4	80.4	100.0	91.4	99.5
<b>D</b>	<b>118.5</b>	<b>116.6</b>	<b>108.2</b>	<b>128.7</b>	<b>127.5</b>	<b>112.5</b>	<b>110.4</b>	<b>93.7</b>	<b>87.6</b>	<b>92.5</b>	<b>94.8</b>	<b>95.1</b>	<b>90.4</b>	<b>96.5</b>	<b>109.3</b>
<b>D35</b>	118.5	116.6	108.2	128.7	127.5	112.5	110.4	93.7	87.6	92.5	94.8	95.1	90.4	96.5	109.3

<sup>1</sup> "..." - Confidential data.