

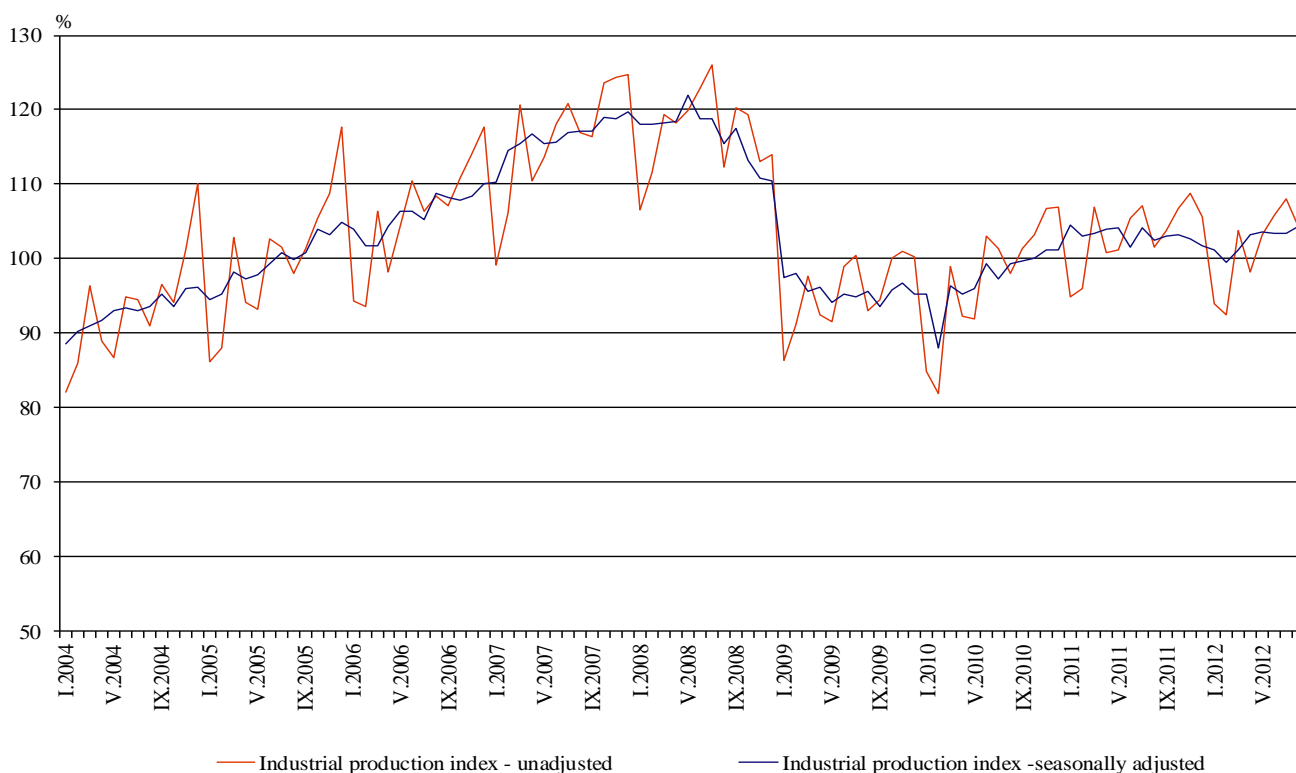


## INDUSTRIAL PRODUCTION INDICES IN AUGUST 2012<sup>1</sup>

The preliminary data showed that the Industrial Production Index<sup>2</sup>, seasonally adjusted<sup>3</sup>, increased by 1.0% in August 2012 as compared to July 2012.

In August 2012 working day adjusted<sup>4</sup> Industrial Production Index rose by 2.0% in comparison with the same month of 2011.

**Figure 1. Industrial Production Indices  
(2005=100)**



<sup>1</sup> August 2012 data are preliminary.

<sup>2</sup> Monthly Industrial Production and Industrial turnover indices measure changes in production and turnover values of industrial enterprises. This information can be used to assess the current economic development and for short-term forecasts. Indices do not measure the actual production level, it aims to measure the average change in value of production between two points of time. Indices are compiled on the basis of information collected through representative sampling survey on industrial enterprises. The sample covers enterprises with annual turnover more than 97% of total turnover in industry.

Industrial production indices are calculated at constant base year (2005) that is to say they are weighted with the structure of the value added at factor costs in the base year.

<sup>3</sup> Seasonal adjustment is a statistical method, which eliminates the seasonal component of time series and it is particularly suitable for long-term comparisons and analysis of the data.

<sup>4</sup> Working day adjustment is an adjustment for variations caused by calendar effects, different number of calendar and working days in the months, national holidays and outliers (for example the presence of more non-working days in May could contribute to the decline in the production in some activities).

The seasonally and working day adjusted data on Industrial production index by months, starting from January 2000 can be found in NSI internet web-site: (<http://www.nsi.bg/otrasalen.php?otr=46>).

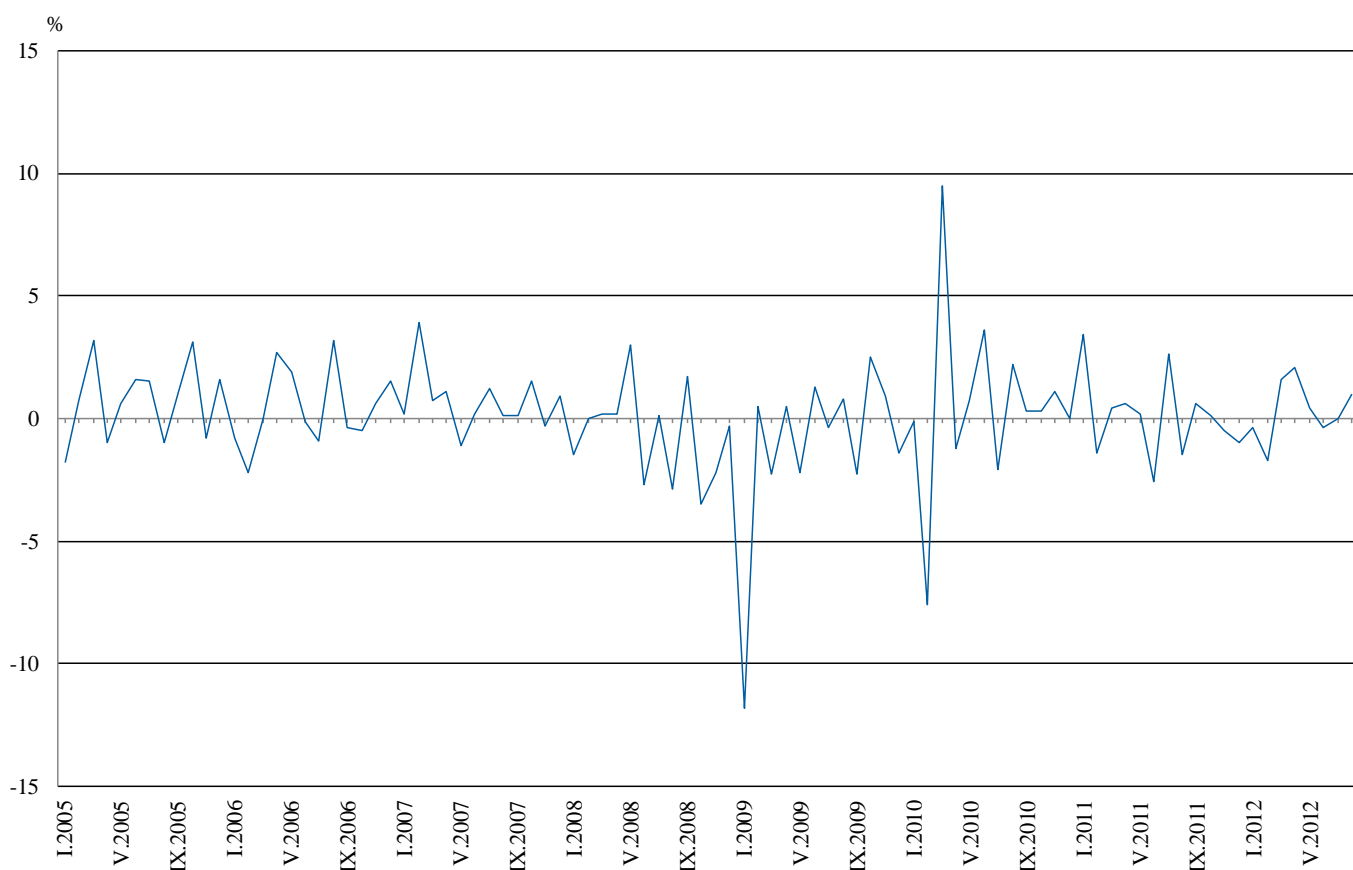


## Monthly comparisons

In August 2012 as compared to July 2012, the seasonally adjusted Industrial Production Index in the manufacturing increased by 1.1%, while in the electricity, gas, steam and air conditioning supply and in the mining and quarrying industry a decrease by 0.7% was seen.

The most significant increases of production in the manufacturing were seen in the repair and installation of machinery and equipment by 22.7%, in the manufacture of fabricated metal products, except machinery and equipment by 7.5%, in the manufacture of rubber and plastic products by 6.2%, in the manufacture of machinery and equipment by 5.7%. There was decrease in the manufacture of tobacco products by 18.5%, in the manufacture of basic metals by 13.2%, in the manufacture of basic pharmaceutical products and pharmaceutical preparations by 11.7%, in the manufacture of paper and paper products by 6.2%.

**Figure 2. Percentage changes of Industrial Production Indices compared to the previous month (Seasonally adjusted)**



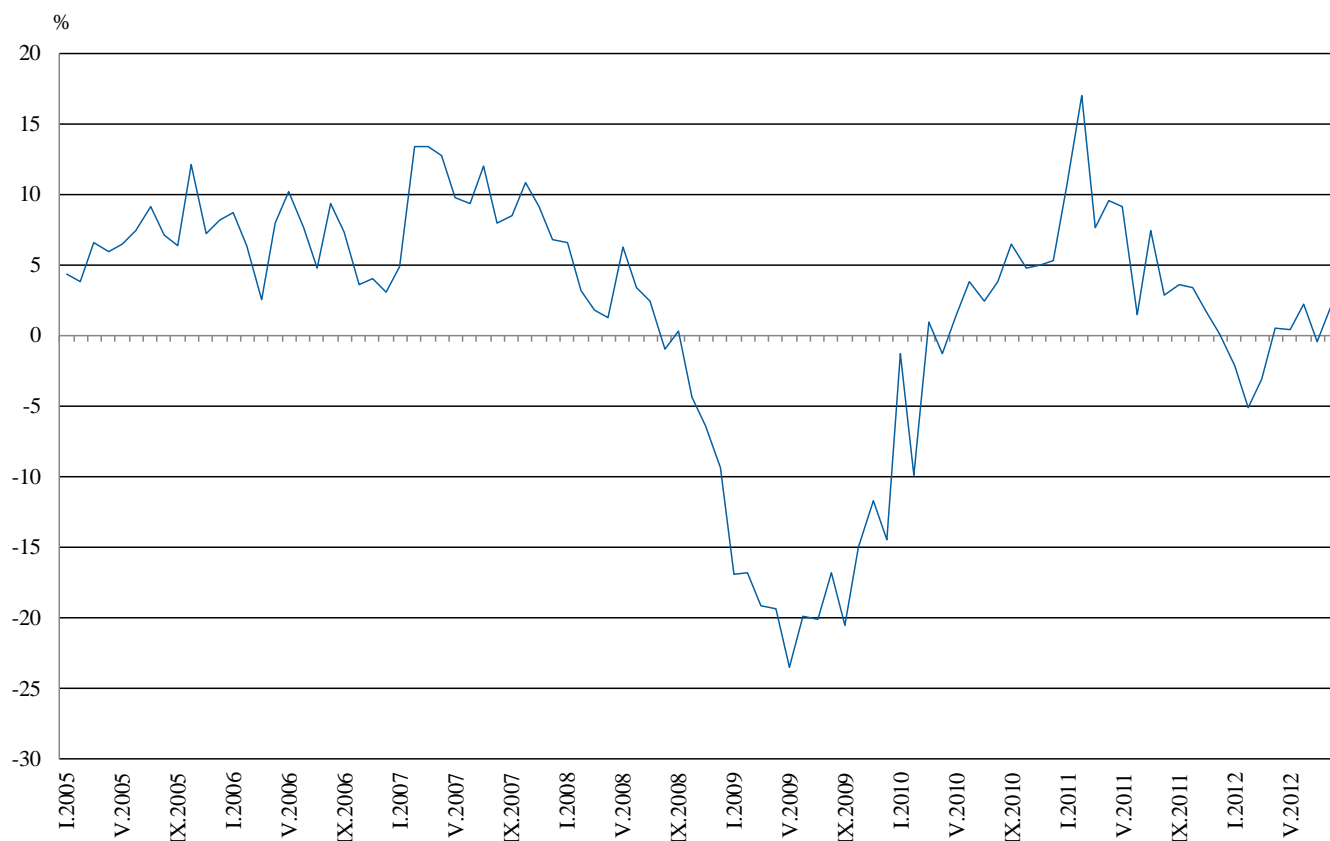


www.nsi.bg  
**Annual comparisons**

On annual bases in August 2012 Industrial Production Index, calculated from working day adjusted data in the mining and quarrying industry increased by 4.5%, in the manufacturing by 2.5% and in the electricity, gas, steam and air conditioning supply by 1.3%.

In the manufacturing, the more significant increases compared to the same month of the previous year were seen in the manufacture of machinery and equipment by 20.6%, in the repair and installation of machinery and equipment by 17.9%, in the manufacture of electrical equipment by 13.4%, in the manufacture of basic pharmaceutical products and pharmaceutical preparations by 8.4%. Decreases were registered in the manufacture of textiles by 28.8%, in the manufacture of basic metals by 23.0%, in the manufacture of chemicals and chemical products by 16.6%.

**Figure 3. Percentage changes of Industrial Production Indices compared to the same month of the previous year  
(Working day adjusted)**



The final data on Industrial Production and Turnover Indices for July 2012 can be found in NSI internet web-site: (<http://www.nsi.bg/otrasalen.php?otr=46>).

Table 1

Percentage changes of Industrial Production Indices compared to the previous month<sup>1</sup>

Economic Activities	NACE.BG - 2008 Code	2012					
		III	IV	V	VI	VII	VIII
<b>Industry</b>	<b>B_TO_E36</b>	<b>1.6</b>	<b>2.1</b>	<b>0.4</b>	<b>-0.4</b>	<b>0.0</b>	<b>1.0</b>
<b>Mining and quarrying</b>	<b>B</b>	<b>5.0</b>	<b>-6.7</b>	<b>2.8</b>	<b>1.7</b>	<b>7.5</b>	<b>-0.7</b>
of which:							
Mining of coal and lignite	B05	7.3	-4.2	-0.6	-17.1	21.7	-0.2
Mining of metal ores	B07	10.5	1.2	-20.2	35.8	-9.2	3.0
Other mining and quarrying	B08	19.5	5.2	-1.4	20.6	20.7	-13.0
<b>Manufacturing</b>	<b>C</b>	<b>4.6</b>	<b>2.0</b>	<b>0.8</b>	<b>-0.9</b>	<b>-1.3</b>	<b>1.1</b>
of which:							
Manufacture of food products	C10	0.3	-3.1	0.5	-2.1	3.9	-1.8
Manufacture of beverages	C11	10.4	-2.0	5.2	-2.1	-1.6	-3.3
Manufacture of tobacco products	C12	4.7	-6.8	12.9	6.6	-5.5	-18.5
Manufacture of textiles	C13	1.4	0.5	-6.1	-4.7	-3.4	6.0
Manufacture of wearing apparel	C14	4.9	-0.3	-2.0	5.7	-7.2	3.5
Manufacture of leather and related products	C15	2.3	-5.3	17.2	6.5	-9.8	9.6
Manufacture of wood and of products of wood and cork, except furniture; manufacture of articles of straw and plaiting materials	C16	6.3	5.4	12.5	-5.3	0.0	-4.9
Manufacture of paper and paper products	C17	25.4	4.5	-0.7	-4.5	6.7	-6.2
Printing and reproduction of recorded media	C18	2.4	-4.7	1.1	-2.8	-3.6	-4.2
Manufacture of chemicals and chemical products	C20	4.0	-18.6	22.6	-5.1	-9.7	0.9
Manufacture of basic pharmaceutical products and pharmaceutical preparations	C21	-2.6	6.4	2.1	1.5	11.8	-11.7
Manufacture of rubber and plastic products	C22	7.2	4.6	5.5	-1.0	-4.0	6.2
Manufacture of other non-metallic mineral products	C23	40.0	3.8	-3.2	-2.1	3.4	0.0
Manufacture of basic metals	C24	-27.1	54.0	-15.4	1.9	1.7	-13.2
Manufacture of fabricated metal products, except machinery and equipment	C25	5.0	-5.8	17.0	-14.7	-3.5	7.5
Manufacture of computer, electronic and optical products	C26	-1.9	7.0	3.6	3.5	-22.8	7.2
Manufacture of electrical equipment	C27	9.1	9.7	1.6	0.4	-4.1	-1.3
Manufacture of machinery and equipment n.e.c.	C28	4.8	-1.8	3.9	-2.9	-3.1	5.7
Manufacture of motor vehicles, trailers and semi-trailers	C29	-1.6	3.0	0.3	1.6	2.3	-2.2
Manufacture of other transport equipment	C30	11.2	-3.2	-21.1	55.8	-37.4	-17.4
Manufacture of furniture	C31	7.4	1.0	12.3	-2.4	-0.6	2.1
Other manufacturing	C32	20.0	5.1	6.7	-8.6	-0.7	12.4
Repair and installation of machinery and equipment	C32	-12.0	-0.1	11.7	-8.8	-10.8	22.7
<b>Electricity, gas, steam and air conditioning supply</b>	<b>D</b>	<b>-9.6</b>	<b>6.0</b>	<b>1.5</b>	<b>-2.0</b>	<b>8.3</b>	<b>-0.7</b>
Electricity, gas, steam and air conditioning supply	D35	-9.6	6.0	1.5	-2.0	8.3	-0.7

<sup>1</sup> Seasonally adjusted.



Table 2

**Percentage changes of Industrial Production Indices compared to  
the same month of the previous year <sup>1</sup>**

Economic Activities	NACE.BG -2008 Code	2012					
		III	IV	V	VI	VII	VIII
<b>Industry</b>	<b>B_TO_E36</b>	<b>-3.1</b>	<b>0.5</b>	<b>0.4</b>	<b>2.2</b>	<b>-0.5</b>	<b>2.0</b>
<b>Mining and quarrying</b>	<b>B</b>	<b>3.2</b>	<b>-5.0</b>	<b>-13.1</b>	<b>4.5</b>	<b>1.5</b>	<b>4.5</b>
of which:							
Mining of coal and lignite	B05	3.6	-23.9	-19.6	-31.2	-1.1	-6.1
Mining of metal ores	B07	7.4	11.7	-8.1	44.8	-8.2	13.1
Other mining and quarrying	B08	11.8	5.9	-4.7	27.0	46.7	27.0
<b>Manufacturing</b>	<b>C</b>	<b>0.1</b>	<b>4.5</b>	<b>4.6</b>	<b>4.5</b>	<b>-0.7</b>	<b>2.5</b>
of which:							
Manufacture of food products	C10	3.8	-1.7	2.7	2.4	2.4	2.8
Manufacture of beverages	C11	7.4	4.8	3.8	9.0	0.8	-1.0
Manufacture of tobacco products	C12	40.4	13.2	36.6	35.9	32.8	3.8
Manufacture of textiles	C13	-13.7	-15.4	-23.8	-27.6	-25.6	-28.8
Manufacture of wearing apparel	C14	-4.5	-1.1	-10.7	4.1	-12.0	-6.4
Manufacture of leather and related products	C15	-20.6	-21.8	-9.0	5.8	-12.0	-3.8
Manufacture of wood and of products of wood and cork, except furniture; manufacture of articles of straw and plaiting materials	C16	-9.1	-4.3	18.0	3.3	0.0	-4.8
Manufacture of paper and paper products	C17	-4.3	-5.2	-14.0	-14.2	-5.5	-5.2
Printing and reproduction of recorded media	C18	-2.6	1.7	-3.0	-3.5	-11.0	-9.3
Manufacture of chemicals and chemical products	C20	12.5	-19.4	-6.6	-6.0	-14.4	-16.6
Manufacture of basic pharmaceutical products and pharmaceutical preparations	C21	6.7	15.4	16.7	15.4	36.7	8.4
Manufacture of rubber and plastic products	C22	-7.6	1.4	0.0	4.1	-2.8	5.5
Manufacture of other non-metallic mineral products	C23	-1.4	1.8	-1.4	-6.5	-0.5	0.6
Manufacture of basic metals	C24	-24.3	14.5	-16.6	-11.1	-8.6	-23.0
Manufacture of fabricated metal products, except machinery and equipment	C25	-6.3	-7.4	1.3	-13.0	-19.2	-2.6
Manufacture of computer, electronic and optical products	C26	8.4	21.8	13.2	17.6	-19.6	1.9
Manufacture of electrical equipment	C27	6.7	38.6	28.9	29.6	14.6	13.4
Manufacture of machinery and equipment n.e.c.	C28	20.8	22.5	14.4	13.9	5.0	20.6
Manufacture of motor vehicles, trailers and semi-trailers	C29	-3.1	14.5	-2.2	7.9	0.7	-4.5
Manufacture of other transport equipment	C30	21.3	5.5	-41.4	73.6	2.1	14.5
Manufacture of furniture	C31	-4.3	-4.1	6.9	7.5	-1.3	-3.0
Other manufacturing	C32	7.3	33.9	11.0	2.2	-2.3	16.0
Repair and installation of machinery and equipment	C33	-3.3	-8.2	18.8	12.9	8.7	17.9
<b>Electricity, gas, steam and air conditioning supply</b>	<b>D</b>	<b>-14.1</b>	<b>-11.8</b>	<b>-7.1</b>	<b>-5.3</b>	<b>-1.8</b>	<b>1.3</b>
Electricity, gas, steam and air conditioning supply	D35	-14.1	-11.8	-7.1	-5.3	-1.8	1.3

<sup>1</sup> Working day adjusted.



**Table 3**

**Industrial Production Indices  
(Seasonally adjusted, 2005=100)**

NACE.BG - 2008 Code	2011					2012							
	VIII	IX	X	XI	XII	I	II	III	IV	V	VI	VII	VIII
<b>B_TO_E36</b>	<b>102.5</b>	<b>103.1</b>	<b>103.2</b>	<b>102.7</b>	<b>101.7</b>	<b>101.3</b>	<b>99.6</b>	<b>101.2</b>	<b>103.3</b>	<b>103.7</b>	<b>103.3</b>	<b>103.3</b>	<b>104.3</b>
<b>B</b>	<b>81.6</b>	<b>84.1</b>	<b>84.2</b>	<b>75.8</b>	<b>90.0</b>	<b>82.2</b>	<b>77.8</b>	<b>81.7</b>	<b>76.2</b>	<b>78.3</b>	<b>79.6</b>	<b>85.6</b>	<b>85.0</b>
<b>B05</b>	120.6	121.2	116.6	123.0	121.2	104.8	108.4	116.3	111.4	110.7	91.8	111.7	111.5
<b>B07</b>	66.3	79.4	76.4	46.1	87.4	73.0	65.6	72.5	73.4	58.6	79.6	72.3	74.5
<b>B08</b>	65.3	58.1	65.7	59.3	62.0	60.2	52.7	63.0	66.3	65.4	78.9	95.2	82.8
<b>C</b>	<b>100.5</b>	<b>102.7</b>	<b>101.8</b>	<b>101.0</b>	<b>98.3</b>	<b>100.2</b>	<b>97.4</b>	<b>101.9</b>	<b>103.9</b>	<b>104.7</b>	<b>103.8</b>	<b>102.5</b>	<b>103.6</b>
<b>C10</b>	108.1	110.1	111.2	108.2	106.7	106.9	114.4	114.7	111.1	111.6	109.3	113.6	111.6
<b>C11</b>	84.7	88.5	85.7	79.0	76.8	78.7	80.6	89.0	87.2	91.7	89.8	88.4	85.5
<b>C12</b>	99.2	94.6	93.3	113.4	105.8	114.6	120.2	125.9	117.4	132.5	141.3	133.5	108.8
<b>C13</b>	77.7	66.3	60.8	63.9	62.7	60.6	58.3	59.1	59.4	55.8	53.2	51.4	54.5
<b>C14</b>	70.2	69.5	67.3	63.8	64.0	66.1	63.0	66.1	65.9	64.6	68.3	63.4	65.6
<b>C15</b>	81.0	80.5	75.1	71.5	69.9	69.9	64.1	65.6	62.1	72.8	77.5	69.9	76.6
<b>C16</b>	86.1	85.6	84.8	82.1	87.9	82.0	73.4	78.0	82.2	92.5	87.6	87.6	83.3
<b>C17</b>	137.0	134.5	115.5	103.8	71.9	87.9	105.7	132.6	138.6	137.6	131.4	140.2	131.5
<b>C18</b>	99.6	100.1	112.2	109.1	100.3	103.6	104.6	107.1	102.1	103.2	100.3	96.7	92.6
<b>C20</b>	110.4	109.2	103.7	98.5	105.6	108.1	103.7	107.8	87.7	107.5	102.0	92.1	92.9
<b>C21</b>	98.0	96.6	102.3	105.0	107.2	97.0	103.4	100.7	107.1	109.3	110.9	124.0	109.5
<b>C22</b>	115.2	118.3	111.0	102.9	103.4	113.0	100.5	107.7	112.7	118.9	117.7	113.0	120.0
<b>C23</b>	86.0	92.1	92.4	84.0	83.9	88.0	60.5	84.7	87.9	85.1	83.3	86.1	86.1
<b>C24</b>	106.0	96.2	108.6	113.6	97.2	111.6	101.1	73.7	113.5	96.0	97.8	99.5	86.4
<b>C25</b>	100.5	113.0	130.5	114.2	89.1	99.3	95.9	100.7	94.9	111.0	94.7	91.4	98.3
<b>C26</b>	121.6	115.4	120.4	133.9	110.6	149.7	134.0	131.5	140.7	145.8	150.9	116.5	124.9
<b>C27</b>	153.7	142.7	145.3	158.1	153.9	150.7	154.8	168.9	185.2	188.1	188.9	181.2	178.9
<b>C28</b>	117.7	125.4	122.6	124.7	116.1	131.9	133.5	139.9	137.4	142.8	138.7	134.4	142.1
<b>C29</b>	153.5	128.8	149.1	143.5	127.5	127.4	144.3	142.0	146.3	146.7	149.0	152.5	149.1
<b>C30</b>	47.7	78.7	62.8	86.6	54.1	98.7	88.9	98.9	95.7	75.5	117.6	73.6	60.8
<b>C31</b>	117.1	112.7	114.9	109.9	109.2	105.3	94.1	101.1	102.1	114.7	111.9	111.2	113.5
<b>C32</b>	161.6	141.8	140.9	133.8	131.6	187.8	135.8	163.0	171.3	182.8	167.0	165.8	186.3
<b>C33</b>	94.8	131.5	99.0	112.4	102.9	102.4	111.9	98.5	98.4	109.9	100.2	89.4	109.7
<b>D</b>	<b>118.5</b>	<b>110.1</b>	<b>117.8</b>	<b>120.9</b>	<b>116.2</b>	<b>114.7</b>	<b>116.6</b>	<b>105.4</b>	<b>111.7</b>	<b>113.4</b>	<b>111.1</b>	<b>120.3</b>	<b>119.4</b>
<b>D35</b>	118.5	110.1	117.8	120.9	116.2	114.7	116.6	105.4	111.7	113.4	111.1	120.3	119.4



**Table 4**

**Industrial Production Indices**  
(Working day adjusted, 2005=100)

NACE.BG - 2008 Code	2009	2010	2011					2012							
	VIII	VIII	VIII	IX	X	XI	XII	I	II	III	IV	V	VI	VII	VIII
<b>B_TO_E36</b>	<b>94.7</b>	<b>98.3</b>	<b>101.1</b>	<b>103.8</b>	<b>108.5</b>	<b>108.3</b>	<b>103.9</b>	<b>93.2</b>	<b>91.5</b>	<b>103.1</b>	<b>100.6</b>	<b>101.4</b>	<b>106.4</b>	<b>108.3</b>	<b>103.1</b>
<b>B</b>	<b>71.3</b>	<b>72.6</b>	<b>79.5</b>	<b>86.4</b>	<b>94.1</b>	<b>82.0</b>	<b>96.0</b>	<b>76.9</b>	<b>72.7</b>	<b>80.4</b>	<b>74.0</b>	<b>74.0</b>	<b>76.3</b>	<b>85.2</b>	<b>83.1</b>
<b>B05</b>	65.7	92.4	112.2	125.2	140.9	146.8	131.2	108.8	106.4	113.5	92.1	101.8	72.2	108.5	105.4
<b>B07</b>	84.6	74.3	65.9	77.4	79.6	46.6	90.6	73.0	65.6	72.5	73.4	61.6	84.4	72.3	74.5
<b>B08</b>	84.1	64.5	68.9	62.0	74.4	65.1	67.0	42.2	39.6	58.9	66.0	69.4	86.6	103.0	87.5
<b>C</b>	<b>94.0</b>	<b>99.8</b>	<b>101.1</b>	<b>107.2</b>	<b>108.6</b>	<b>106.2</b>	<b>95.7</b>	<b>85.1</b>	<b>83.4</b>	<b>103.2</b>	<b>102.8</b>	<b>107.0</b>	<b>113.5</b>	<b>109.6</b>	<b>103.6</b>
<b>C10</b>	113.5	122.1	112.4	120.1	122.8	115.7	112.3	89.3	98.7	113.3	106.8	108.4	112.1	115.2	115.6
<b>C11</b>	122.0	115.7	108.3	95.5	77.8	75.1	87.2	49.0	52.6	83.8	85.5	98.5	108.9	111.0	107.2
<b>C12</b>	143.1	117.4	115.6	104.1	107.5	136.9	103.7	91.8	89.9	118.1	102.7	139.6	167.1	154.3	120.0
<b>C13</b>	52.8	51.5	63.6	63.7	61.2	67.4	53.3	48.4	55.7	65.1	66.3	61.9	62.3	55.5	45.3
<b>C14</b>	71.4	67.8	70.4	68.5	68.5	63.9	64.5	65.6	60.3	65.3	60.6	57.5	74.4	73.5	65.9
<b>C15</b>	65.9	80.4	78.6	84.3	77.7	70.0	65.2	68.6	63.6	67.3	51.6	63.0	84.2	83.8	75.6
<b>C16</b>	70.1	90.3	89.9	93.2	93.6	87.8	83.4	62.9	56.8	74.5	78.6	91.2	94.2	96.2	85.6
<b>C17</b>	71.6	147.0	139.1	139.9	112.9	101.9	69.5	80.7	96.2	138.1	143.0	139.0	142.5	148.5	131.8
<b>C18</b>	107.9	110.6	103.9	106.2	124.6	118.1	113.3	85.2	91.3	101.1	96.8	96.6	104.5	96.4	94.2
<b>C20</b>	68.7	97.0	104.6	110.2	100.9	101.8	104.3	100.3	97.1	119.0	90.0	105.8	105.9	92.5	87.2
<b>C21</b>	78.2	85.3	97.6	95.5	114.7	115.7	110.0	75.6	103.6	105.1	105.8	106.0	126.4	115.0	105.8
<b>C22</b>	103.6	115.4	117.9	124.6	124.4	109.3	97.9	90.6	83.9	108.7	109.4	115.7	127.9	124.0	124.4
<b>C23</b>	89.4	86.6	90.1	102.1	103.8	88.5	72.4	60.5	48.3	82.4	91.0	91.5	93.4	95.1	90.6
<b>C24</b>	93.3	90.0	101.5	88.1	118.1	117.3	76.1	105.8	97.0	83.6	119.4	99.5	96.5	109.8	78.2
<b>C25</b>	89.9	101.0	100.5	116.4	129.4	120.2	105.6	70.9	84.9	103.5	94.9	108.9	101.4	94.4	97.9
<b>C26</b>	80.8	99.0	110.8	123.2	122.3	139.4	138.1	128.0	114.7	135.4	137.2	139.5	158.0	114.6	112.9
<b>C27</b>	113.9	127.7	139.8	150.9	163.8	181.5	147.4	136.1	142.8	170.1	185.0	180.5	205.8	195.7	158.6
<b>C28</b>	86.1	107.0	108.6	129.9	131.3	132.5	112.1	111.3	126.4	149.1	134.3	141.0	154.5	142.9	131.0
<b>C29</b>	99.2	126.4	137.2	127.3	157.3	158.5	120.1	114.7	133.6	150.0	151.8	152.3	161.1	150.9	131.0
<b>C30</b>	188.4	131.8	49.5	86.3	52.2	81.5	59.4	57.7	70.3	108.4	88.1	100.4	141.5	76.3	56.7
<b>C31</b>	91.4	99.3	118.5	115.2	126.2	119.7	114.1	86.8	81.2	102.0	97.8	112.2	118.7	115.5	114.9
<b>C32</b>	156.7	124.2	164.4	152.6	163.0	142.8	121.7	151.8	117.1	160.3	165.9	182.8	190.0	165.2	190.7
<b>C33</b>	101.2	129.4	93.3	141.3	102.7	121.7	140.7	70.2	93.9	98.1	89.4	103.8	105.9	88.8	110.0
<b>D</b>	<b>102.7</b>	<b>102.7</b>	<b>108.1</b>	<b>97.2</b>	<b>113.4</b>	<b>129.3</b>	<b>140.9</b>	<b>131.7</b>	<b>129.7</b>	<b>114.7</b>	<b>103.8</b>	<b>95.0</b>	<b>95.2</b>	<b>113.2</b>	<b>109.5</b>
<b>D35</b>	102.7	102.7	108.1	97.2	113.4	129.3	140.9	131.7	129.7	114.7	103.8	95.0	95.2	113.2	109.5