

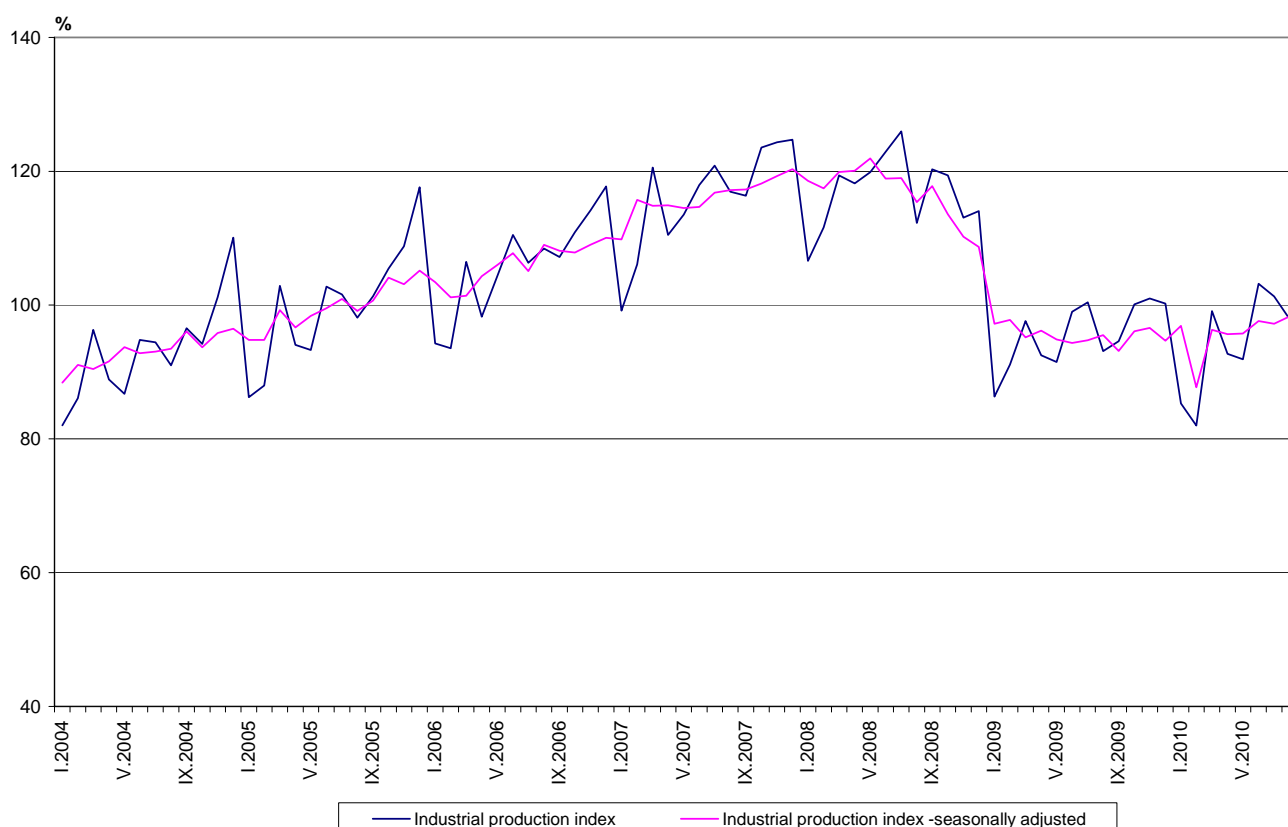


Industrial Production Indices and Industrial Turnover Indices in August 2010¹

The preliminary data showed that the Industrial Production Index², seasonally adjusted³ increased by 1.1% in August 2010 as compared to July 2009.

In August 2010 working day adjusted⁴ Industrial Production Index rose by 3.7% as compared to the same month of 2009.

Figure 1. Industrial Production Indices (2005=100)



¹ August 2010 data are preliminary.

² Monthly Industrial Production and Industrial turnover indices measure changes in **production and turnover values** of industrial enterprises. This information can be used to access the current economic development and for short-term forecasts. Indices do not measure the actual production level, it aims to measure the average change in value of production between two points of time

Indices are compiled on the base of information collected through representative sampling survey on industrial enterprises. The sample covers enterprises with annual turnover more than 97% of total turnover in industry.

Industrial production indices are calculated at constant base year (2005) that is to say they are weighted with the structure of the value added at factor costs in the base year.

³ **Seasonal adjustment** is a statistical method, which eliminates the seasonal component of time series and it is particularly suitable for long-term comparisons and analysis of the data.

⁴ **Working day adjustment** is an adjustment for variations caused by calendar effects, different number of calendar and working days in the months, national holidays and outliers (for example the presence of more non-working days in May could contribute to the decline in the production in some activities).

The seasonally and working day adjusted data on Industrial production index for the period 2000-2010 can be found in NSI internet web-site: (<http://www.nsi.bg/otrasalen.php?otr=46>).

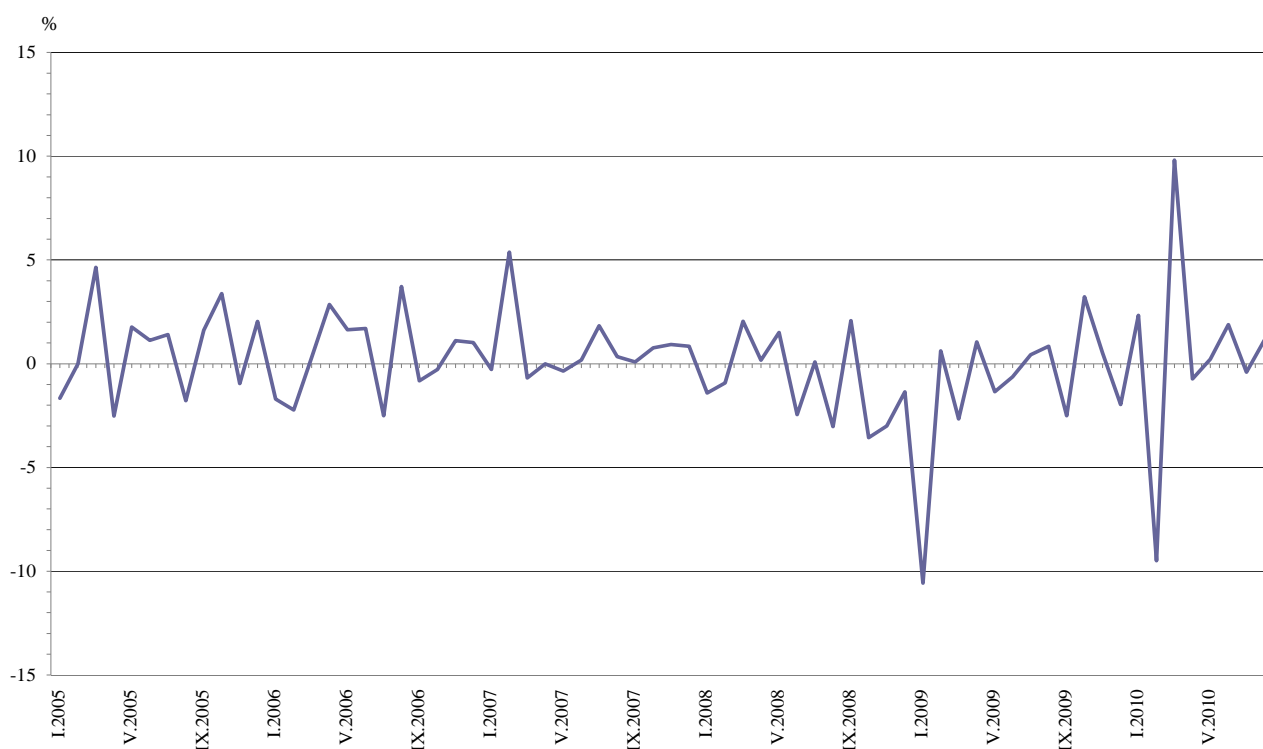


Monthly comparisons

In August 2010, the seasonally adjusted Industrial Production Index in manufacturing increased by 1.7% as compared to July 2010, while in the electricity, gas, steam and air conditioning supply the decrease by 0.3% was registered, in the mining and quarrying industry the production fell by 1.4%.

The most significant increases of production in the manufacturing were seen in the manufacture of other transport equipment by 55.0%, in the repair and installation of machinery and equipment by 11.9%, in the manufacture of paper and paper products by 8.7%, in the manufacture of chemicals and chemical products by 5.9%, in the manufacture of machinery and equipment n.e.c. by 4.7%. There were decreases in the manufacture of tobacco products by 7.0%, in the manufacture of textiles by 6.7%, in the manufacture of wearing apparel by 4.8%

Figure 2. Percentage changes of Industrial Production Indices compared with the previous month (seasonally adjusted)



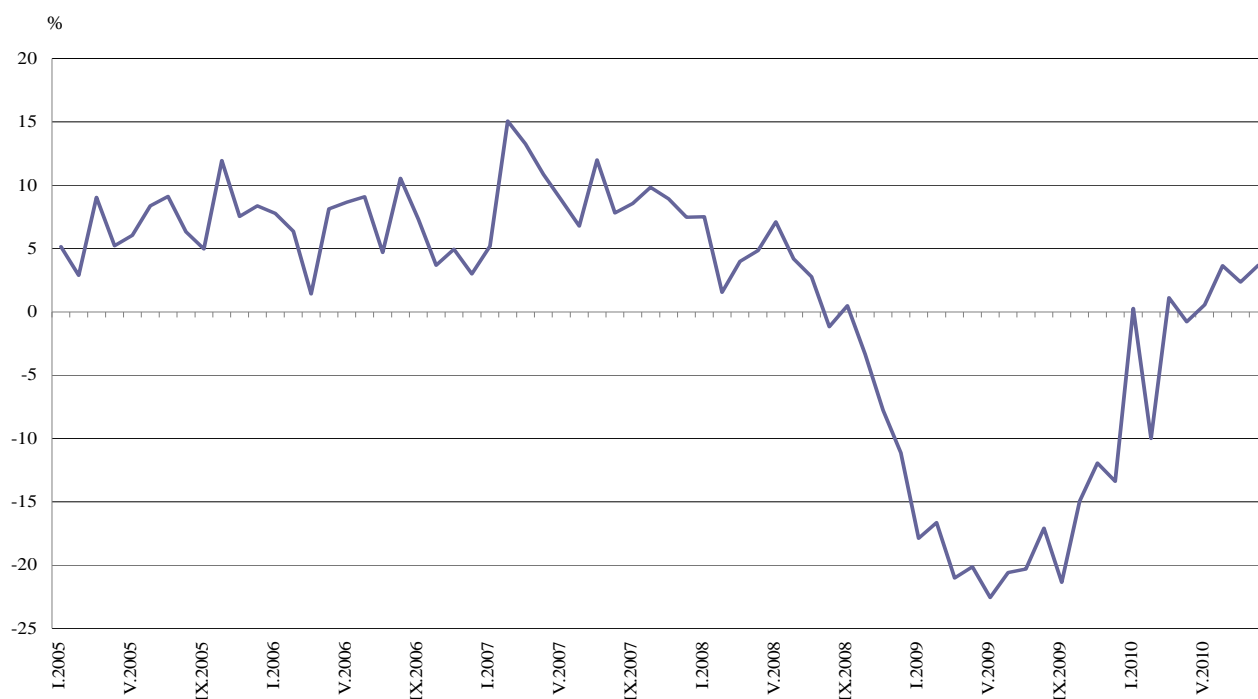


Annual comparisons

On annual bases in August 2010 Industrial Production Index, calculated from working day adjusted data, grew in the manufacturing by 5.1%, in the electricity, gas, steam and air conditioning supply by 1.5% and in the mining and quarrying industry by 1.0%.

Increases were registered in the production of investment goods by 12.6%, the production of intermediate goods by 8.2% and the production of energy by 1.6%.

Figure 3. Percentage changes of Industrial Production Indices compared with the same month of the previous year
(working day adjusted)



The final data on Industrial Production and Turnover Indices for July 2010 can be found in NSI internet web-site: (<http://www.nsi.bg/otrasalen.php?otr=46>).



Table 1

Percentage changes of Industrial Production Indices compared with the previous month¹

| Economic Activities | NACE.BG - 2008 Code | 2010 | | | | | |
|---|------------------------|-------------|-------------|-------------|------------|-------------|-------------|
| | | III | IV | V | VI | VII | VIII |
| Industry | B_TO_E36 | 9.8 | -0.7 | 0.2 | 1.9 | -0.4 | 1.1 |
| Mining and quarrying | B | 0.9 | -6.9 | 6.7 | 7.7 | -5.6 | -1.4 |
| of which: | | | | | | | |
| Mining of coal and lignite | B05 | -3.1 | -11.8 | 20.2 | 4.2 | -5.2 | 6.1 |
| Mining of metal ores | B07 | 3.2 | 9.8 | -14.9 | 7.1 | 0.5 | -2.6 |
| Other mining and quarrying | B08 | 2.3 | -17.2 | 14.2 | 0.0 | -5.1 | -5.7 |
| Manufacturing | C | 15.5 | 1.0 | 1.4 | 1.5 | -1.0 | 1.7 |
| of which: | | | | | | | |
| Manufacture of food products | C10 | 0.0 | -2.6 | 12.3 | -0.7 | -3.3 | 0.3 |
| Manufacture of beverages | C11 | 14.0 | -4.3 | -0.1 | 0.0 | 2.1 | 2.2 |
| Manufacture of tobacco products | C12 | 17.3 | -17.6 | -1.5 | 11.9 | -2.4 | -7.0 |
| Manufacture of textiles | C13 | 9.2 | 8.1 | 0.4 | -0.3 | 1.3 | -6.7 |
| Manufacture of wearing apparel | C14 | 0.5 | 1.7 | 1.1 | -3.3 | 7.4 | -4.8 |
| Manufacture of leather and related products | C15 | -1.6 | -1.2 | -3.2 | 4.4 | 1.3 | 2.0 |
| Manufacture of wood and of products of wood and cork, except furniture; manufacture of articles of straw and plaiting materials | C16 | 9.6 | 3.7 | -2.9 | 3.8 | 7.2 | 0.8 |
| Manufacture of paper and paper products | C17 | 10.2 | -0.7 | 8.1 | 30.8 | -8.7 | 8.7 |
| Printing and reproduction of recorded media | C18 | 6.7 | 2.0 | -0.8 | -13.4 | 3.0 | 1.4 |
| Manufacture of chemicals and chemical products | C20 | 11.1 | -1.4 | 7.2 | -4.1 | 9.4 | 5.9 |
| Manufacture of basic pharmaceutical products and pharmaceutical preparations | C21 | -0.1 | 0.1 | 1.3 | 1.4 | -3.0 | 1.0 |
| Manufacture of rubber and plastic products | C22 | 10.0 | 0.4 | 6.8 | -0.4 | 2.9 | -3.5 |
| Manufacture of other non-metallic mineral products | C23 | 7.5 | -0.9 | 10.8 | 3.6 | -8.5 | 0.6 |
| Manufacture of basic metals | C24 | -2.9 | 3.8 | -1.1 | -6.9 | 6.3 | -3.2 |
| Manufacture of fabricated metal products, except machinery and equipment | C25 | -2.9 | -8.4 | 7.1 | 5.0 | -4.6 | 0.3 |
| Manufacture of computer, electronic and optical products | C26 | -9.2 | 10.3 | -11.9 | 7.1 | 7.9 | 0.4 |
| Manufacture of electrical equipment | C27 | 8.0 | -5.3 | 5.0 | -2.4 | -0.1 | -2.6 |
| Manufacture of machinery and equipment n.e.c. | C28 | 5.1 | 1.5 | 2.5 | 2.9 | -1.8 | 4.7 |
| Manufacture of motor vehicles, trailers and semi-trailers | C29 | 5.3 | 2.0 | 1.6 | -1.6 | -7.5 | 1.5 |
| Manufacture of other transport equipment | C30 | 9.6 | -7.2 | 31.8 | -25.3 | -9.2 | 55.0 |
| Manufacture of furniture | C31 | 1.9 | -1.1 | 0.1 | 2.7 | -0.7 | 3.3 |
| Other manufacturing | C32 | 10.2 | -4.3 | -2.7 | -6.8 | -8.3 | 5.7 |
| Repair and installation of machinery and equipment | C32 | 7.3 | -1.3 | -19.1 | 21.2 | -1.8 | 11.9 |
| Electricity, gas, steam and air conditioning supply | D | -0.9 | 1.8 | -3.7 | 8.9 | 1.5 | -0.3 |
| Electricity, gas, steam and air conditioning supply | D35 | -0.9 | 1.8 | -3.7 | 8.9 | 1.5 | -0.3 |

¹ Seasonally adjusted.



Table 2

Percentage changes of Industrial Production Indices compared with the same month of the previous year¹

| Economic Activities | NACE.BG - 2008 Code | 2010 | | | | | |
|---|---------------------|-------------|-------------|-------------|-------------|-------------|------------|
| | | III | IV | V | VI | VII | VIII |
| Industry | B_TO_E36 | 1.1 | -0.8 | 0.5 | 4.2 | 2.4 | 3.7 |
| Mining and quarrying | B | 3.1 | -4.8 | -2.8 | 14.3 | 1.7 | 1.0 |
| of which: | | | | | | | |
| Mining of coal and lignite | B05 | -3.4 | -27.6 | 4.4 | 34.8 | 14.1 | 42.1 |
| Mining of metal ores | B07 | 25.4 | 24.8 | -1.2 | 14.8 | -1.0 | -13.9 |
| Other mining and quarrying | B08 | -21.9 | -34.3 | -19.8 | -18.4 | -18.6 | -25.1 |
| Manufacturing | C | 3.8 | 0.3 | 2.6 | 5.9 | 4.4 | 5.1 |
| of which: | | | | | | | |
| Manufacture of food products | C10 | -0.3 | -4.7 | 13.6 | 9.5 | 2.3 | 7.0 |
| Manufacture of beverages | C11 | -7.1 | -15.9 | -16.3 | -9.5 | -9.4 | -4.5 |
| Manufacture of tobacco products | C12 | 61.2 | -17.5 | -21.7 | 5.0 | 5.1 | -18.8 |
| Manufacture of textiles | C13 | -16.2 | -7.6 | 0.1 | 3.4 | 7.0 | -4.3 |
| Manufacture of wearing apparel | C14 | -3.1 | -15.5 | -11.2 | -13.1 | -6.3 | -7.0 |
| Manufacture of leather and related products | C15 | -1.6 | -0.9 | -21.0 | 0.7 | -12.1 | 19.1 |
| Manufacture of wood and of products of wood and cork, except furniture; manufacture of articles of straw and plaiting materials | C16 | 23.1 | 27.1 | 18.7 | 15.6 | 15.8 | 28.6 |
| Manufacture of paper and paper products | C17 | 47.0 | 39.6 | 59.0 | 130.9 | 85.7 | 110.5 |
| Printing and reproduction of recorded media | C18 | 5.5 | 8.8 | 5.2 | -26.9 | -12.5 | 3.2 |
| Manufacture of chemicals and chemical products | C20 | 36.9 | 14.1 | 41.9 | 13.5 | 24.9 | 39.0 |
| Manufacture of basic pharmaceutical products and pharmaceutical preparations | C21 | 6.7 | 8.7 | 18.7 | 25.4 | 11.6 | 8.7 |
| Manufacture of rubber and plastic products | C22 | 0.0 | -1.5 | 6.6 | 7.6 | 12.6 | 9.5 |
| Manufacture of other non-metallic mineral products | C23 | -24.3 | -23.4 | -7.0 | -0.4 | -5.8 | -2.4 |
| Manufacture of basic metals | C24 | -1.3 | 16.1 | 4.7 | 0.1 | 3.1 | 0.0 |
| Manufacture of fabricated metal products, except machinery and equipment | C25 | 15.3 | -2.6 | 17.6 | 24.3 | 14.0 | 8.5 |
| Manufacture of computer, electronic and optical products | C26 | 10.9 | 11.7 | -13.5 | -10.0 | 6.8 | 17.8 |
| Manufacture of electrical equipment | C27 | 21.1 | 0.6 | 17.8 | 15.7 | 11.3 | 7.1 |
| Manufacture of machinery and equipment n.e.c. | C28 | -2.7 | 0.1 | 11.2 | 9.8 | 5.6 | 20.2 |
| Manufacture of motor vehicles, trailers and semi-trailers | C29 | 84.8 | 75.3 | 48.1 | 47.6 | 12.9 | 24.1 |
| Manufacture of other transport equipment | C30 | 26.2 | -12.1 | 1.2 | -8.0 | -33.7 | -23.6 |
| Manufacture of furniture | C31 | -7.0 | -3.1 | -4.7 | 10.6 | -1.1 | 5.7 |
| Other manufacturing | C32 | 19.8 | -0.1 | -10.9 | -20.3 | -30.7 | -23.6 |
| Repair and installation of machinery and equipment | C33 | 37.7 | 24.4 | -6.1 | 49.0 | 21.4 | 24.2 |
| Electricity, gas, steam and air conditioning supply | D | -9.0 | 2.0 | -4.6 | -3.0 | -3.1 | 1.5 |
| Electricity, gas, steam and air conditioning supply | D35 | -9.0 | 2.0 | -4.6 | -3.0 | -3.1 | 1.5 |

¹ Working day adjusted.



Table 3

Industrial Production Indices
(seasonally adjusted, 2005=100)

| NACE.BG - 2008 Code | 2009 | | | | | 2010 | | | | | | | |
|------------------------|--------------|--------------|--------------|--------------|--------------|--------------|--------------|--------------|--------------|--------------|--------------|--------------|--------------|
| | VIII | IX | X | XI | XII | I | II | III | IV | V | VI | VII | VIII |
| B_TO_E36 | 95.5 | 93.1 | 96.1 | 96.6 | 94.7 | 96.9 | 87.7 | 96.3 | 95.6 | 95.8 | 97.6 | 97.2 | 98.3 |
| B | 74.2 | 65.9 | 82.8 | 81.3 | 73.5 | 73.1 | 74.8 | 75.5 | 70.3 | 75.0 | 80.8 | 76.3 | 75.2 |
| | | | | | | | | | | | | | |
| B05 | 75.5 | 84.4 | 102.9 | 99.9 | 85.6 | 89.6 | 95 | 92.1 | 81.2 | 97.6 | 101.7 | 96.4 | 102.3 |
| B07 | 86.6 | 64.5 | 84.5 | 84.1 | 73.7 | 77.3 | 74.4 | 76.8 | 84.3 | 71.7 | 76.8 | 77.2 | 75.2 |
| B08 | 79.1 | 70.1 | 71.1 | 73.5 | 72.7 | 73.5 | 68.9 | 70.5 | 58.4 | 66.7 | 66.7 | 63.3 | 59.7 |
| C | 94 | 91.1 | 94.9 | 92.4 | 89.4 | 94.3 | 81.5 | 94.1 | 95.0 | 96.3 | 97.7 | 96.7 | 98.3 |
| | | | | | | | | | | | | | |
| C10 | 110.2 | 105.9 | 107.1 | 107.4 | 113.2 | 113.3 | 112.1 | 112.1 | 109.2 | 122.6 | 121.7 | 117.7 | 118.0 |
| C11 | 97.2 | 90.1 | 97.9 | 93.4 | 81.6 | 85.7 | 79.9 | 91.1 | 87.2 | 87.1 | 87.1 | 88.9 | 90.9 |
| C12 | 114.9 | 126.9 | 104.0 | 112.8 | 97.2 | 107.4 | 99.6 | 116.8 | 96.3 | 94.9 | 106.2 | 103.6 | 96.3 |
| C13 | 68.5 | 65 | 65.8 | 63.9 | 62.6 | 61.3 | 58.6 | 64.0 | 69.2 | 69.5 | 69.3 | 70.2 | 65.5 |
| C14 | 71.8 | 69.7 | 73.8 | 69.2 | 68.1 | 68.1 | 64.7 | 65.0 | 66.1 | 66.8 | 64.6 | 69.4 | 66.1 |
| C15 | 76.1 | 78.6 | 77.7 | 75.2 | 73.6 | 76.1 | 76.7 | 75.5 | 74.6 | 72.2 | 75.4 | 76.4 | 77.9 |
| C16 | 69.2 | 68.9 | 70.3 | 75.3 | 72.6 | 70.7 | 72.0 | 78.9 | 81.8 | 79.4 | 82.4 | 88.3 | 89.0 |
| C17 | 75.2 | 82.3 | 80.3 | 83.5 | 87.9 | 91.0 | 96.2 | 106.0 | 105.3 | 113.8 | 148.9 | 136.0 | 147.8 |
| C18 | 101.2 | 103.3 | 119.4 | 117.6 | 110.3 | 119.5 | 107.5 | 114.7 | 117.0 | 116.1 | 100.6 | 103.6 | 105.1 |
| C20 | 74.1 | 74.0 | 88.1 | 83.1 | 86.0 | 94.0 | 77.5 | 86.1 | 84.9 | 91.0 | 87.3 | 95.5 | 101.1 |
| C21 | 79.2 | 79.6 | 81.3 | 82.2 | 84.0 | 83.8 | 84.2 | 84.1 | 84.2 | 85.3 | 86.5 | 83.9 | 84.7 |
| C22 | 103.3 | 109.8 | 108.0 | 107.7 | 105.7 | 107.5 | 96.8 | 106.5 | 106.9 | 114.2 | 113.7 | 117.0 | 112.9 |
| C23 | 82.9 | 79.7 | 79.3 | 78.4 | 71.0 | 72.1 | 72.0 | 77.4 | 76.7 | 85.0 | 88.1 | 80.6 | 81.1 |
| C24 | 95.3 | 92.1 | 103.2 | 106.5 | 89.9 | 95.9 | 100.5 | 97.6 | 101.3 | 100.2 | 93.3 | 99.2 | 96.0 |
| C25 | 88.5 | 81.8 | 86.6 | 81.6 | 70.5 | 81.9 | 100.3 | 97.4 | 89.2 | 95.5 | 100.3 | 95.7 | 96.0 |
| C26 | 93.3 | 96.9 | 105.7 | 106.5 | 106.9 | 104.6 | 107.3 | 97.4 | 107.4 | 94.6 | 101.3 | 109.3 | 109.7 |
| C27 | 124.9 | 131.2 | 130.9 | 136.0 | 136.4 | 155 | 135 | 145.8 | 138.0 | 144.9 | 141.4 | 141.3 | 137.6 |
| C28 | 94.3 | 96.8 | 93.7 | 94.2 | 93.2 | 94.2 | 97.0 | 101.9 | 103.4 | 106.0 | 109.1 | 107.1 | 112.1 |
| C29 | 110.3 | 117.6 | 124.8 | 129.5 | 135.2 | 144 | 149.4 | 157.3 | 160.5 | 163.1 | 160.5 | 148.4 | 150.6 |
| C30 | 179.5 | 91.1 | 126.5 | 92.2 | 73.6 | 100.4 | 88.2 | 96.7 | 89.7 | 118.2 | 88.3 | 80.2 | 124.3 |
| C31 | 93.1 | 87.7 | 85.4 | 86.3 | 85.2 | 91.2 | 91.8 | 93.5 | 92.5 | 92.6 | 95.1 | 94.4 | 97.5 |
| C32 | 158.9 | 168 | 163.9 | 135.6 | 107.9 | 132.6 | 131.5 | 144.9 | 138.7 | 135.0 | 125.8 | 115.4 | 122.0 |
| C33 | 102.9 | 80.9 | 97.7 | 94.0 | 87.3 | 102.7 | 110.1 | 118.1 | 116.6 | 94.3 | 114.3 | 112.2 | 125.6 |
| D | 114.7 | 113.9 | 112.2 | 111.6 | 105.4 | 108.4 | 108.5 | 107.5 | 109.4 | 105.3 | 114.7 | 116.4 | 116.0 |
| D35 | 114.7 | 113.9 | 112.2 | 111.6 | 105.4 | 108.4 | 108.5 | 107.5 | 109.4 | 105.3 | 114.7 | 116.4 | 116.0 |

Industrial Production Indices
(working day adjusted, 2005=100)

| NACE.BG - 2008 Code | 2007 | 2008 | 2009 | | | | | 2010 | | | | | | | |
|------------------------|--------------|--------------|--------------|--------------|--------------|--------------|--------------|--------------|--------------|--------------|--------------|--------------|--------------|--------------|--------------|
| | VIII | VIII | VIII | IX | X | XI | XII | I | II | III | IV | V | VI | VII | VIII |
| B_TO_E36 | 115.5 | 114.1 | 94.6 | 95.2 | 100.3 | 101.6 | 101.9 | 88.0 | 82.3 | 99.3 | 93.3 | 96.2 | 102.4 | 101.5 | 98.1 |
| B | 84.0 | 88.9 | 72.5 | 69.3 | 92.5 | 89.8 | 79.6 | 70.5 | 71.1 | 75.4 | 68.1 | 73.7 | 78.1 | 75.5 | 73.2 |
| | | | | | | | | | | | | | | | |
| B05 | 105.1 | 98.0 | 66.4 | 88.3 | 121.4 | 118.1 | 99.1 | 104.6 | 100.8 | 90.1 | 56.5 | 80.7 | 92.2 | 96.0 | 94.3 |
| B07 | 59.0 | 81.3 | 85.1 | 64.6 | 90.9 | 86.6 | 78.4 | 65.1 | 66.9 | 78.8 | 91.0 | 81.3 | 82.4 | 76.0 | 73.2 |
| B08 | 129.0 | 121.8 | 83.6 | 76.1 | 79.1 | 81.1 | 79.5 | 47.4 | 54.3 | 69.5 | 57.7 | 73.0 | 72.6 | 65.8 | 62.6 |
| C | 120.0 | 118.0 | 93.9 | 94.9 | 99.0 | 97.3 | 95.7 | 78.2 | 72.6 | 96.6 | 94.3 | 101.2 | 105.8 | 103.5 | 98.7 |
| | | | | | | | | | | | | | | | |
| C10 | 126.4 | 128.7 | 114.0 | 117.8 | 117.5 | 115.7 | 126.3 | 95.9 | 96.1 | 111.9 | 105.9 | 128.3 | 125.3 | 118.8 | 122.0 |
| C11 | 144.7 | 158.4 | 120.0 | 94.4 | 91.0 | 89.0 | 103.1 | 53.7 | 51.3 | 85.6 | 85.6 | 97.7 | 105.9 | 107.6 | 114.6 |
| C12 | 88.4 | 70.6 | 143.1 | 162.4 | 139.1 | 135.6 | 98.7 | 60.6 | 47.9 | 96.4 | 72.4 | 106.5 | 116.0 | 119.6 | 116.2 |
| C13 | 85.7 | 68.6 | 53.1 | 64.5 | 67.6 | 69.8 | 60.4 | 49.7 | 56.7 | 73.6 | 76.4 | 82.7 | 77.9 | 78.8 | 50.8 |
| C14 | 108.8 | 94.4 | 70.9 | 68.9 | 73.1 | 70.4 | 74.9 | 67.1 | 64.6 | 68.6 | 61.4 | 67.0 | 68.7 | 79.9 | 65.9 |
| C15 | 106.0 | 111.9 | 65.2 | 79.2 | 84.6 | 74.3 | 67.5 | 80.3 | 86.4 | 77.0 | 68.5 | 62.4 | 80.7 | 91.4 | 77.7 |
| C16 | 136.3 | 111.9 | 70.6 | 77.0 | 76.8 | 85.2 | 73.6 | 55.0 | 61.0 | 79.9 | 80.7 | 83.2 | 88.3 | 93.2 | 90.7 |
| C17 | 119.6 | 95.8 | 70.0 | 80.8 | 78.3 | 78.8 | 86.7 | 90.5 | 97.4 | 112.6 | 111.3 | 121.7 | 152.0 | 131.9 | 147.3 |
| C18 | 135.5 | 113.3 | 106.9 | 113.3 | 130.2 | 128.3 | 129.9 | 99.7 | 93.5 | 109.5 | 113.5 | 118.2 | 105.6 | 103.7 | 110.3 |
| C20 | 100.3 | 121.9 | 68.2 | 74.6 | 84.7 | 84.4 | 90.0 | 89.6 | 70.7 | 97.7 | 89.7 | 91.3 | 92.2 | 97.1 | 94.8 |
| C21 | 109.0 | 106.6 | 77.8 | 76.6 | 86.0 | 89.1 | 92.0 | 77.9 | 85.1 | 86.3 | 82.9 | 90.4 | 99.2 | 73.3 | 84.6 |
| C22 | 120.0 | 143.1 | 105.3 | 117.0 | 121.3 | 116.4 | 105.7 | 86.7 | 82.7 | 109.9 | 106.9 | 115.3 | 123.2 | 129.1 | 115.3 |
| C23 | 149.1 | 158.4 | 88.7 | 89.7 | 89.8 | 84.5 | 70.0 | 45.2 | 53.3 | 73.2 | 77.4 | 94.8 | 99.4 | 88.9 | 86.6 |
| C24 | 109.0 | 92.2 | 93.0 | 87.4 | 108.2 | 110.4 | 78.6 | 83.9 | 99.0 | 107.6 | 102.4 | 99.7 | 93.6 | 105.3 | 93.0 |
| C25 | 129.0 | 124.0 | 89.5 | 86.3 | 83.8 | 86.2 | 93.0 | 58.1 | 89.5 | 100.6 | 90.5 | 98.0 | 108.6 | 99.1 | 97.2 |
| C26 | 90.8 | 90.2 | 83.0 | 106.9 | 105.5 | 110.7 | 142.0 | 88.1 | 89.5 | 100.6 | 104.7 | 97.6 | 104.0 | 105.6 | 97.8 |
| C27 | 144.2 | 149.5 | 115.0 | 149.5 | 151.4 | 157.8 | 144.2 | 141.0 | 123.1 | 146.9 | 133.0 | 149.5 | 146.1 | 148.3 | 123.1 |
| C28 | 127.4 | 123.0 | 86.9 | 102.4 | 99.0 | 101.7 | 102.8 | 81.3 | 89.4 | 106.8 | 103.8 | 108.2 | 119.2 | 114.5 | 104.5 |
| C29 | 173.1 | 110.2 | 99.0 | 118.0 | 137.7 | 127.8 | 121.4 | 135.7 | 145.8 | 170.9 | 163.5 | 162.2 | 174.6 | 135.4 | 122.9 |
| C30 | 105.8 | 169.1 | 192.8 | 106.0 | 132.2 | 92.3 | 105.1 | 43.7 | 58.9 | 89.3 | 69.9 | 139.2 | 90.6 | 85.9 | 147.3 |
| C31 | 142.2 | 145.4 | 92.0 | 90.5 | 91.3 | 94.0 | 99.5 | 77.2 | 82.5 | 98.6 | 92.4 | 99.8 | 101.1 | 97.9 | 97.3 |
| C32 | 127.4 | 132.2 | 158.7 | 188.2 | 194.5 | 146.8 | 104.7 | 102.9 | 114.1 | 145.1 | 138.3 | 145.5 | 141.2 | 115.0 | 121.2 |
| C33 | 111.7 | 130.5 | 100.8 | 86.7 | 101.0 | 102.9 | 117.4 | 70.2 | 90.5 | 120.2 | 107.0 | 90.2 | 122.0 | 119.7 | 125.2 |
| D | 111.4 | 109.9 | 102.9 | 103.9 | 106.9 | 121.6 | 133.5 | 128.9 | 121.3 | 120.1 | 100.3 | 86.9 | 99.9 | 104.4 | 104.4 |
| D35 | 111.4 | 109.9 | 102.9 | 103.9 | 106.9 | 121.6 | 133.5 | 128.9 | 121.3 | 120.1 | 100.3 | 86.9 | 102.4 | 104.4 | 104.4 |