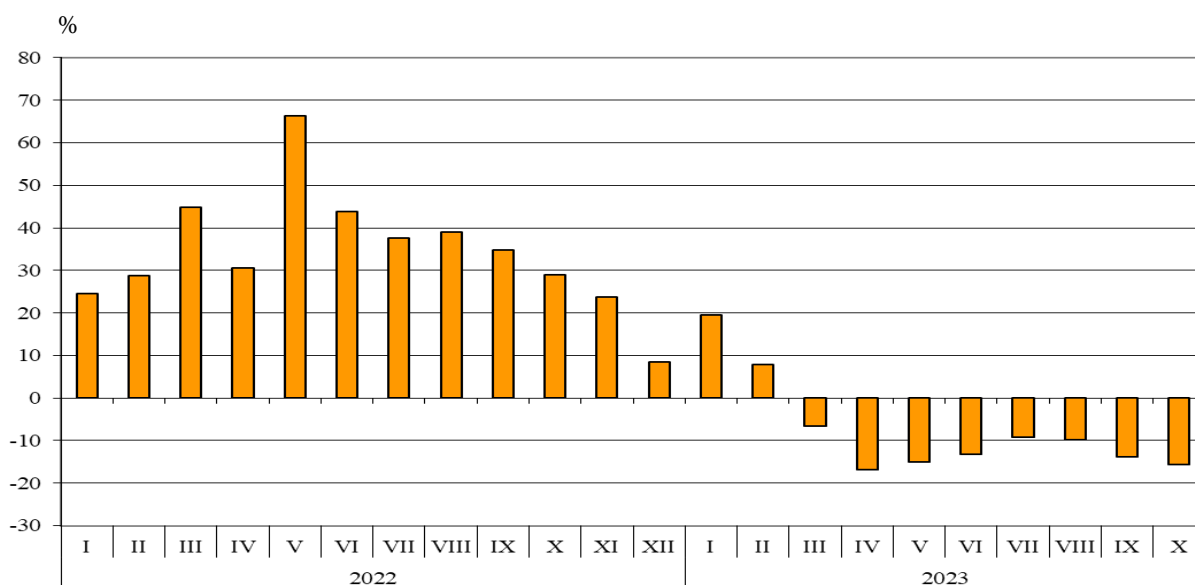


## TRADE IN GOODS OF BULGARIA WITH THE EU IN THE PERIOD JANUARY - OCTOBER 2023 (PRELIMINARY DATA)

In the period **January - October 2023**, the exports of goods from Bulgaria to the EU decreased by 8.2% in comparison with the same period of 2022 and added up to 46 758.9 million BGN (Annex, Tables 1 and 2). Main trade partners of Bulgaria were Germany, Romania, Italy, Greece and France, which accounted for 61.0% of the exports to the EU Member States (Annex, Table 3).

**Figure 1. Nominal value<sup>1</sup> change of exports of goods from Bulgaria to the EU  
in the period 2022 - 2023  
(Compared to the same month of the previous year)**



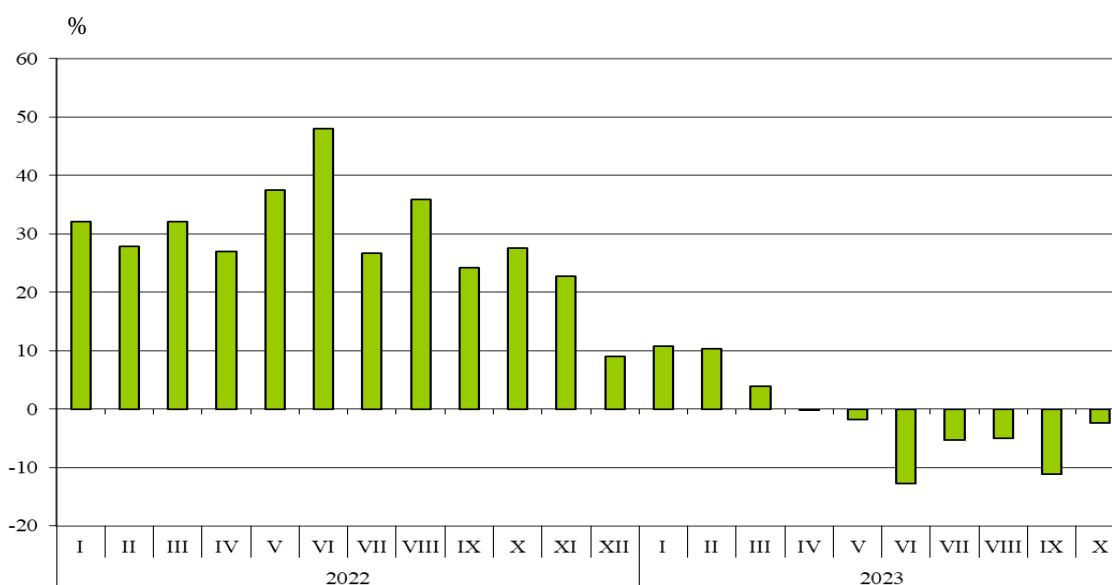
In the exports of goods from Bulgaria to the EU, distributed according to the **Standard International Trade Classification**, the most notable growth was recorded in the section ‘Beverages and tobacco’ (13.2%) (Annex, Table 4). The most notable fall was reported in the section ‘Animal and vegetable oils, fats and waxes’ (66.4%).

In **October 2023**, the exports to the EU decreased by 15.6% compared to the corresponding month of the previous year and amounted to 4 596.0 million BGN.

<sup>1</sup> Value changes at current prices.

**Imports of goods to Bulgaria from the EU** in the period **January - October 2023** decreased by 1.8% in comparison with the same period of 2022 and is worth to 48 258.7 million BGN (at CIF prices)<sup>1</sup> (Annex, Tables 1 and 2). The largest amounts were reported for the goods imported from Germany, Italy, Romania, Greece and the Netherlands (Annex, Table 3).

**Figure 2. Nominal value<sup>2</sup> change of imports of goods to Bulgaria from the EU in the period 2022 - 2023**  
(Compared to the same month of the previous year)



In the imports of goods to Bulgaria from the EU Member States, distributed according to the **Standard International Trade Classification**, the largest growth was recorded in the section ‘Beverages and tobacco’ (15.2%). The most notable fall was reported in the section ‘Mineral fuel, lubricants and related materials’ (64.8%).

In **October 2023**, the imports from the EU decreased by 2.3% compared to the corresponding month of the previous year and amounted to 5 141.0 million BGN.

The **foreign trade balance of Bulgaria (export FOB - import CIF) with the EU** in the period **January - October 2023** was negative and added up to 1499.8 million BGN (Annex, Table 1).

<sup>1</sup> Imports at FOB prices are calculated by BNB

(<http://bnb.bg/Statistics/StExternalSector/StForeignTrade/StFTImports/index.htm?toLang= EN>).

<sup>2</sup> Value changes at current prices.



Annex

Table 1

Exports, imports and trade balance of Bulgaria in the period January - October 2022 and 2023<sup>1</sup> by months

(Million BGN)

Months/Periods	Exports - FOB			Imports - CIF <sup>2</sup>			Trade balance - FOB/CIF		
	Total	EU	Non-EU	Total	EU	Non-EU	Total	EU	Non-EU
I.2022	6244.6	4124.4	2120.2	7643.0	4132.2	3510.8	-1398.4	-7.8	-1390.6
II.2022	6673.8	4272.2	2401.6	7694.6	4390.7	3303.9	-1020.8	-118.5	-902.3
III.2022	8035.5	5425.9	2609.6	8966.6	5278.8	3687.8	-931.1	147.1	-1078.2
<b>I - III.2022</b>	<b>20953.9</b>	<b>13822.5</b>	<b>7131.4</b>	<b>24304.2</b>	<b>13801.7</b>	<b>10502.5</b>	<b>-3350.3</b>	<b>20.8</b>	<b>-3371.1</b>
IV.2022	7590.2	5141.0	2449.2	8445.5	4571.6	3873.9	-855.3	569.4	-1424.7
V.2022	8322.2	5584.1	2738.1	9020.1	5071.1	3949.0	-697.9	513.0	-1210.9
VI.2022	8659.8	5453.8	3206.0	10219.3	5554.4	4664.9	-1559.5	-100.6	-1458.9
<b>IV - VI.2022</b>	<b>24572.2</b>	<b>16178.9</b>	<b>8393.3</b>	<b>27684.9</b>	<b>15197.1</b>	<b>12487.8</b>	<b>-3112.7</b>	<b>981.8</b>	<b>-4094.5</b>
<b>I - VI.2022</b>	<b>45526.1</b>	<b>30001.4</b>	<b>15524.7</b>	<b>51989.1</b>	<b>28998.8</b>	<b>22990.3</b>	<b>-6463.0</b>	<b>1002.6</b>	<b>-7465.6</b>
VII.2022	8187.0	5266.7	2920.3	9513.6	5001.4	4512.2	-1326.6	265.3	-1591.9
VIII.2022	7809.0	4915.0	2894.0	8535.3	4724.1	3811.2	-726.3	190.9	-917.2
IX.2022	7803.3	5313.9	2489.4	10043.6	5178.1	4865.5	-2240.3	135.8	-2376.1
<b>VII - IX.2022</b>	<b>23799.3</b>	<b>15495.6</b>	<b>8303.7</b>	<b>28092.5</b>	<b>14903.6</b>	<b>13188.9</b>	<b>-4293.2</b>	<b>592.0</b>	<b>-4885.2</b>
<b>I - IX.2022</b>	<b>69325.4</b>	<b>45497.0</b>	<b>23828.4</b>	<b>80081.6</b>	<b>43902.4</b>	<b>36179.2</b>	<b>-10756.2</b>	<b>1594.6</b>	<b>-12350.8</b>
X.2022	8296.5	5445.2	2851.3	9821.0	5262.9	4558.1	-1524.5	182.3	-1706.8
<b>I - X.2022</b>	<b>77621.9</b>	<b>50942.2</b>	<b>26679.7</b>	<b>89902.6</b>	<b>49165.3</b>	<b>40737.3</b>	<b>-12280.7</b>	<b>1776.9</b>	<b>-14057.6</b>
I.2023	7359.6	4931.9	2427.7	8137.1	4577.5	3559.6	-777.5	354.4	-1131.9
II.2023	7103.7	4609.3	2494.4	8067.4	4845.9	3221.5	-963.7	-236.6	-727.1
III.2023	7964.8	5073.0	2891.8	8594.1	5487.6	3106.5	-629.3	-414.6	-214.7
<b>I - III.2023</b>	<b>22428.1</b>	<b>14614.2</b>	<b>7813.9</b>	<b>24798.6</b>	<b>14911.0</b>	<b>9887.6</b>	<b>-2370.5</b>	<b>-296.8</b>	<b>-2073.7</b>
IV.2023	6760.5	4278.6	2481.9	7356.0	4565.7	2790.3	-595.5	-287.1	-308.4
V.2023	7354.6	4741.9	2612.7	8148.1	4976.6	3171.5	-793.5	-234.7	-558.8
VI.2023	7309.0	4729.4	2579.6	7862.8	4849.2	3013.6	-553.8	-119.8	-434.0
<b>IV - VI.2023</b>	<b>21424.1</b>	<b>13749.9</b>	<b>7674.2</b>	<b>23366.9</b>	<b>14391.5</b>	<b>8975.4</b>	<b>-1942.8</b>	<b>-641.6</b>	<b>-1301.2</b>
<b>I - VI.2023</b>	<b>43852.2</b>	<b>28364.1</b>	<b>15488.1</b>	<b>48165.5</b>	<b>29302.5</b>	<b>18863.0</b>	<b>-4313.3</b>	<b>-938.4</b>	<b>-3374.9</b>
VII.2023	7294.3	4786.4	2507.9	7858.0	4732.5	3125.5	-563.7	53.9	-617.6
VIII.2023	6893.0	4436.6	2456.4	7862.1	4484.6	3377.5	-969.1	-48.0	-921.1
IX.2023	7481.8	4575.8	2906.0	7917.8	4598.1	3319.7	-436.0	-22.3	-413.7
<b>VII - IX.2023</b>	<b>21669.1</b>	<b>13798.8</b>	<b>7870.3</b>	<b>23637.9</b>	<b>13815.2</b>	<b>9822.7</b>	<b>-1968.8</b>	<b>-16.4</b>	<b>-1952.4</b>
<b>I - IX.2023</b>	<b>65521.3</b>	<b>42162.9</b>	<b>23358.4</b>	<b>71803.4</b>	<b>43117.7</b>	<b>28685.7</b>	<b>-6282.1</b>	<b>-954.8</b>	<b>-5327.3</b>
X.2023	7517.9	4596.0	2921.9	8637.1	5141.0	3496.1	-1119.2	-545.0	-574.2
<b>I - X.2023</b>	<b>73039.2</b>	<b>46758.9</b>	<b>26280.3</b>	<b>80440.5</b>	<b>48258.7</b>	<b>32181.8</b>	<b>-7401.3</b>	<b>-1499.8</b>	<b>-5901.5</b>

<sup>1</sup> Data are preliminary as of January 12, 2024.

<sup>2</sup> Imports at FOB prices are calculated by BNB

(<http://bnb.bg/Statistics/StExternalSector/StForeignTrade/StFTImports/index.htm?toLang= EN&toLang= EN>).

**Table 2**

**Value changes of exports and imports of Bulgaria in the period  
January - October 2023<sup>1</sup> compared to the same period of the  
previous year**

(Per cent)

Months/Periods	Exports - FOB			Imports - CIF		
	Total	EU	Non-EU	Total	EU	Non-EU
I	17.9	19.6	14.5	6.5	10.8	1.4
II	6.4	7.9	3.9	4.8	10.4	-2.5
III	-0.9	-6.5	10.8	-4.2	4.0	-15.8
<b>I - III</b>	<b>7.0</b>	<b>5.7</b>	<b>9.6</b>	<b>2.0</b>	<b>8.0</b>	<b>-5.9</b>
IV	-10.9	-16.8	1.3	-12.9	-0.1	-28.0
V	-11.6	-15.1	-4.6	-9.7	-1.9	-19.7
VI	-15.6	-13.3	-19.5	-23.1	-12.7	-35.4
<b>IV - VI</b>	<b>-12.8</b>	<b>-15.0</b>	<b>-8.6</b>	<b>-15.6</b>	<b>-5.3</b>	<b>-28.1</b>
<b>I - VI</b>	<b>-3.7</b>	<b>-5.5</b>	<b>-0.2</b>	<b>-7.4</b>	<b>1.0</b>	<b>-18.0</b>
VII	-10.9	-9.1	-14.1	-17.4	-5.4	-30.7
VIII	-11.7	-9.7	-15.1	-7.9	-5.1	-11.4
IX	-4.1	-13.9	16.7	-21.2	-11.2	-31.8
<b>VII - IX</b>	<b>-9.0</b>	<b>-11.0</b>	<b>-5.2</b>	<b>-15.9</b>	<b>-7.3</b>	<b>-25.5</b>
<b>I - IX</b>	<b>-5.5</b>	<b>-7.3</b>	<b>-2.0</b>	<b>-10.3</b>	<b>-1.8</b>	<b>-20.7</b>
X	-9.4	-15.6	2.5	-12.1	-2.3	-23.3
<b>I - X</b>	<b>-5.9</b>	<b>-8.2</b>	<b>-1.5</b>	<b>-10.5</b>	<b>-1.8</b>	<b>-21.0</b>

<sup>1</sup> Data are preliminary as of January 12, 2024.



Table 3

Exports, imports and trade balance by groups of countries and main partner countries<sup>1</sup>  
of Bulgaria in the period January - October 2022 and 2023<sup>2</sup>

Countries and groups of countries	Exports - FOB			Imports - CIF			Trade balance - FOB/CIF	
	2022	2023	Change compared to the same period of the previous year - %	2022	2023	Change compared to the same period of the previous year - %	2022	2023
	Million BGN			Million BGN			Million BGN	
<b>Total</b>	<b>77621.9</b>	<b>73039.2</b>	<b>-5.9</b>	<b>89902.6</b>	<b>80440.5</b>	<b>-10.5</b>	<b>-12280.7</b>	<b>-7401.3</b>
<b>EU</b>	<b>50942.2</b>	<b>46758.9</b>	<b>-8.2</b>	<b>49165.3</b>	<b>48258.7</b>	<b>-1.8</b>	<b>1776.9</b>	<b>-1499.8</b>
Austria	1519.8	1550.3	2.0	1927.8	2138.6	10.9	-408.0	-588.3
Belgium	1962.1	2241.2	14.2	1691.7	1790.0	5.8	270.4	451.2
Croatia	653.1	535.8	-18.0	199.3	208.7	4.7	453.8	327.1
Cyprus	334.1	229.7	-31.2	90.4	104.9	16.0	243.7	124.8
Czechia	1282.6	1387.0	8.1	1990.3	2168.5	9.0	-707.7	-781.5
Denmark	361.1	345.0	-4.5	384.2	536.8	39.7	-23.1	-191.8
Estonia	99.6	116.4	16.9	70.0	170.9	144.1	29.6	-54.5
Finland	182.6	162.9	-10.8	183.7	209.4	14.0	-1.1	-46.5
France	2589.7	2385.4	-7.9	1912.5	2133.2	11.5	677.2	252.2
Germany	11073.6	10036.7	-9.4	9544.5	10052.9	5.3	1529.1	-16.2
Greece	5100.9	4031.4	-21.0	5242.0	3583.7	-31.6	-141.1	447.7
Hungary	1419.9	931.3	-34.4	2840.8	2802.4	-1.4	-1420.9	-1871.1
Ireland	179.1	217.4	21.4	359.9	320.9	-10.8	-180.8	-103.5
Italy	5983.2	5303.0	-11.4	5194.9	5468.2	5.3	788.3	-165.2
Latvia	78.9	93.6	18.6	95.1	69.2	-27.2	-16.2	24.4
Lithuania	216.1	201.3	-6.8	195.2	204.3	4.7	20.9	-3.0
Luxembourg	17.8	27.0	51.7	76.9	57.6	-25.1	-59.1	-30.6
Malta	28.7	34.1	18.8	33.6	25.0	-25.6	-4.9	9.1
Netherlands	2048.9	1484.4	-27.6	3690.9	3364.1	-8.9	-1642.0	-1879.7
Poland	1759.4	1725.3	-1.9	2929.1	3161.7	7.9	-1169.7	-1436.4
Portugal	208.1	207.6	-0.2	181.8	181.1	-0.4	26.3	26.5
Romania	7938.7	6772.4	-14.7	6210.0	5309.3	-14.5	1728.7	1463.1
Slovakia	694.9	853.5	22.8	928.1	962.1	3.7	-233.2	-108.6
Slovenia	444.4	410.5	-7.6	653.9	743.6	13.7	-209.5	-333.1
Spain	2123.8	2021.0	-4.8	1876.2	1524.9	-18.7	247.6	496.1
Sweden	566.7	661.2	16.7	557.2	646.5	16.0	9.5	14.7
Not specified	2074.4	2793.5	34.7	105.3	320.2	204.1	1969.1	2473.3

<sup>1</sup> Partner country:

- In case of exports (or dispatches) is the country (or Member State) of final destination of the goods.
- In case of imports (or arrivals) is the country (or Member State) of consignment of the goods.

<sup>2</sup> Data are preliminary as of January 12, 2024.



Table 3

**Exports, imports and trade balance by groups of countries and main partner countries<sup>1</sup>  
of Bulgaria in the period January - October 2022 and 2023<sup>2</sup>**

(Continued)

Countries and groups of countries	Exports - FOB			Imports - CIF			Trade balance - FOB/CIF	
	2022	2023	Change compared to the same period of the previous year - %	2022	2023	Change compared to the same period of the previous year - %	2022	2023
	Million BGN			Million BGN			Million BGN	
<b>Non-EU countries</b>	<b>26679.7</b>	<b>26280.3</b>	<b>-1.5</b>	<b>40737.3</b>	<b>32181.8</b>	<b>-21.0</b>	<b>-14057.6</b>	<b>-5901.5</b>
<b>CIS<sup>3</sup></b>	<b>1346.0</b>	<b>1533.2</b>	<b>13.9</b>	<b>11091.9</b>	<b>6036.1</b>	<b>-45.6</b>	<b>-9745.9</b>	<b>-4502.9</b>
of which:								
Kazakhstan	75.3	133.3	77.0	23.2	12.0	-48.3	52.1	121.3
Russian Federation	773.1	828.1	7.1	10049.8	5285.8	-47.4	-9276.7	-4457.7
<b>OECD<sup>4</sup></b>	<b>9542.3</b>	<b>9075.7</b>	<b>-4.9</b>	<b>11895.1</b>	<b>10402.6</b>	<b>-12.5</b>	<b>-2352.8</b>	<b>-1326.9</b>
of which:								
Canada	167.9	243.8	45.2	206.7	154.6	-25.2	-38.8	89.2
Chile	25.9	22.6	-12.7	287.9	248.4	-13.7	-262.0	-225.8
Israel	525.2	358.7	-31.7	96.4	195.1	102.4	428.8	163.6
Japan	125.3	147.3	17.6	369.1	325.8	-11.7	-243.8	-178.5
Korea, Republic of	217.7	369.3	69.6	318.5	313.4	-1.6	-100.8	55.9
Türkiye	4735.6	4101.6	-13.4	7747.4	6626.3	-14.5	-3011.8	-2524.7
United Kingdom <sup>5</sup>	1218.4	1146.7	-5.9	645.6	639.3	-1.0	572.8	507.4
United States	1700.5	1735.9	2.1	1467.3	915.1	-37.6	233.2	820.8
<b>EFTA<sup>6</sup></b>	<b>603.7</b>	<b>679.5</b>	<b>12.6</b>	<b>582.7</b>	<b>812.9</b>	<b>39.5</b>	<b>21.0</b>	<b>-133.4</b>
of which:								
Norway	95.9	105.9	10.4	61.2	229.1	274.3	34.7	-123.2
Switzerland	497.6	567.9	14.1	515.8	578.6	12.2	-18.2	-10.7

<sup>1</sup> Partner country:

- In case of exports (or dispatches) is the country (or Member State) of final destination of the goods.
- In case of imports (or arrivals) is the country (or Member State) of consignment of the goods.

<sup>2</sup> Data are preliminary as of January 12, 2024.

<sup>3</sup> CIS includes: Azerbaijan; Armenia; Belarus; Kazakhstan; Kyrgyzstan; Moldova, Republic of; Russian Federation; Tajikistan; Turkmenistan; Uzbekistan.

<sup>4</sup> OECD includes: Australia; Virgin Islands (US); United States; Iceland; Canada; Chile; Costa Rica; Mexico; New Zealand; Norway; Korea, Republic of; Türkiye; United Kingdom; Switzerland; Japan; Israel.

<sup>5</sup> The United Kingdom includes: Northern Ireland; Great Britain; Channel Islands and Isle of Man.

<sup>6</sup> EFTA includes: Norway; Switzerland; Iceland and Liechtenstein.

Table 3

Exports, imports and trade balance by groups of countries and main partner countries<sup>1</sup>  
of Bulgaria in the period January - October 2022 and 2023<sup>2</sup>

(Continued and end)

Countries and groups of countries	Exports - FOB			Imports - CIF			Trade balance - FOB/CIF	
	2022	2023	Change compared to the same period of the previous year - %	2022	2023	Change compared to the same period of the previous year - %	2022	2023
	Million BGN			Million BGN			Million BGN	
<b>Countries not included in the upper groups</b>								
Albania	214.2	216.9	1.3	81.5	74.9	-8.1	132.7	142.0
Bosnia and Herzegovina	161.9	152.3	-5.9	40.5	61.5	51.9	121.4	90.8
Brazil	181.2	68.1	-62.4	523.7	590.0	12.7	-342.5	-521.9
China	1216.6	1693.5	39.2	5267.4	4507.7	-14.4	-4050.8	-2814.2
Egypt	963.3	1232.7	28.0	417.8	624.0	49.4	545.5	608.7
Georgia	426.4	382.9	-10.2	833.9	509.7	-38.9	-407.5	-126.8
India	412.8	315.1	-23.7	429.5	403.5	-6.1	-16.7	-88.4
Indonesia	157.7	463.9	194.2	395.0	598.7	51.6	-237.3	-134.8
Iran, Islamic Republic of	210.0	183.5	-12.6	144.3	88.5	-38.7	65.7	95.0
Peru	23.0	38.4	67.0	400.9	314.4	-21.6	-377.9	-276.0
Republic of North Macedonia	1288.8	1355.9	5.2	707.0	775.8	9.7	581.8	580.1
Serbia	1956.0	1595.4	-18.4	1480.2	1792.5	21.1	475.8	-197.1
Singapore	40.0	242.4	506.0	91.8	66.7	-27.3	-51.8	175.7
South Africa	439.4	222.7	-49.3	200.4	181.2	-9.6	239.0	41.5
Syrian Arab Republic	6.7	3.7	-44.8	10.3	1.4	-86.4	-3.6	2.3
Taiwan	74.9	214.8	186.8	404.8	269.7	-33.4	-329.9	-54.9
Tunisia	390.0	191.3	-50.9	74.5	65.8	-11.7	315.5	125.5
Ukraine	1662.8	1501.8	-9.7	2729.4	1505.3	-44.8	-1066.6	-3.5
United Arab Emirates	195.2	301.5	54.5	70.4	78.7	11.8	124.8	222.8
Viet Nam	85.6	91.4	6.8	288.5	253.8	-12.0	-202.9	-162.4

<sup>1</sup> Partner country:

- In case of exports (or dispatches) is the country (or Member State) of final destination of the goods.
- In case of imports (or arrivals) is the country (or Member State) of consignment of the goods.

<sup>2</sup> Data are preliminary as of January 12, 2024.

Table 4

Exports, imports and trade balance of Bulgaria by sections of SITC, rev. 4  
in the period January - October 2022 and 2023<sup>1</sup>

Sections by SITC	Exports - FOB			Imports - CIF			Trade balance - FOB/CIF	
	2022	2023	Change compared to the same period of the previous year - %	2022	2023	Change compared to the same period of the previous year - %	2022	2023
	Million BGN			Million BGN			Million BGN	
<b>Total</b>	<b>77621.9</b>	<b>73039.2</b>	<b>-5.9</b>	<b>89902.6</b>	<b>80440.5</b>	<b>-10.5</b>	<b>-12280.7</b>	<b>-7401.3</b>
<b>of which: EU</b>	<b>50942.2</b>	<b>46758.9</b>	<b>-8.2</b>	<b>49165.3</b>	<b>48258.7</b>	<b>-1.8</b>	<b>1776.9</b>	<b>-1499.8</b>
Food and live animals	8409.6	9440.7	12.3	6046.3	6790.1	12.3	2363.3	2650.6
of which: EU	4648.5	4846.6	4.3	4559.1	5094.9	11.8	89.4	-248.3
Beverages and tobacco	526.9	612.6	16.3	1203.5	1393.2	15.8	-676.6	-780.6
of which: EU	321.0	363.4	13.2	944.3	1088.1	15.2	-623.3	-724.7
Crude materials, inedible (except fuel)	4491.6	4391.6	-2.2	8004.3	6057.2	-24.3	-3512.7	-1665.6
of which: EU	2787.6	2716.6	-2.5	1769.4	1744.4	-1.4	1018.2	972.2
Mineral fuel, lubricants and related materials	9051.6	5784.6	-36.1	15510.4	8803.1	-43.2	-6458.8	-3018.5
of which: EU	2889.5	1508.8	-47.8	3547.1	1247.7	-64.8	-657.6	261.1
Animal and vegetable oils, fats and waxes	2799.4	1429.8	-48.9	1312.5	767.1	-41.6	1486.9	662.7
of which: EU	1956.0	657.5	-66.4	562.1	354.4	-37.0	1393.9	303.1
Chemical and related products n.e.c.	9195.3	7718.9	-16.1	13043.7	10992.5	-15.7	-3848.4	-3273.6
of which: EU	6037.2	4767.9	-21.0	9371.3	8187.6	-12.6	-3334.1	-3419.7
Manufactured goods classified chiefly by material	17030.7	14779.6	-13.2	14615.9	13116.9	-10.3	2414.8	1662.7
of which: EU	12759.8	10845.9	-15.0	7410.2	7066.9	-4.6	5349.6	3779.0
Machinery and transport equipment	15694.0	17366.9	10.7	23235.3	25129.9	8.2	-7541.3	-7763.0
of which: EU	11673.3	12456.8	6.7	16369.4	18466.2	12.8	-4696.1	-6009.4
Miscellaneous manufactured articles	10330.7	11074.9	7.2	6850.1	7292.5	6.5	3480.6	3782.4
of which: EU	7832.4	8548.0	9.1	4564.6	4927.8	8.0	3267.8	3620.2
Commodities and transactions n.e.c.	92.1	439.6	377.3	80.6	98.0	21.6	11.5	341.6
of which: EU	36.9	47.4	28.5	67.8	80.7	19.0	-30.9	-33.3

<sup>1</sup>Data are preliminary as of January 12, 2024.