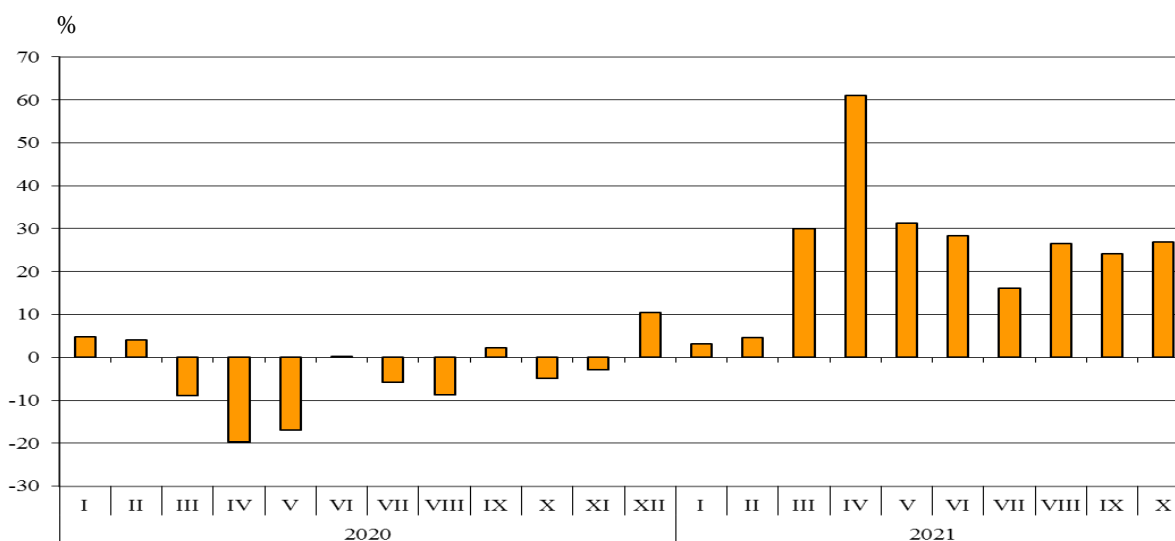


TRADE IN GOODS OF BULGARIA WITH EU IN THE PERIOD JANUARY - OCTOBER 2021 (PRELIMINARY DATA)

In the period **January - October 2021**, the exports of goods from Bulgaria to the EU increased by 24.1% in comparison with the same period of 2020 and added up to 37 006.8 million BGN (Annex, Tables 1 and 2). Main trade partners of Bulgaria were Germany, Romania, Italy, Greece, France and Belgium which accounted for 68.9% of the exports to the EU Member States (Annex, Table 3).

In **October 2021**, the exports to the EU grew by 26.8% compared to the corresponding month of the previous year and amounted to 4 216.8 million BGN.

**Figure 1. Nominal value¹ change of exports of goods from Bulgaria to EU in the period 2020 - 2021
(Compared to the same month of the previous year)**



In the period **January - October 2021**, in the exports of goods from Bulgaria to the EU, distributed according to the **Standard International Trade Classification**, the most notable growth compared to the same period of 2020 was recorded in sections ‘Animal and vegetable oils, fats and waxes’ (117.8 %) and ‘Mineral fuel, lubricants and related materials’ (69.8%) (Annex, Table 4). Fall was reported only in the section ‘Beverages and tobacco’ (17.1%).

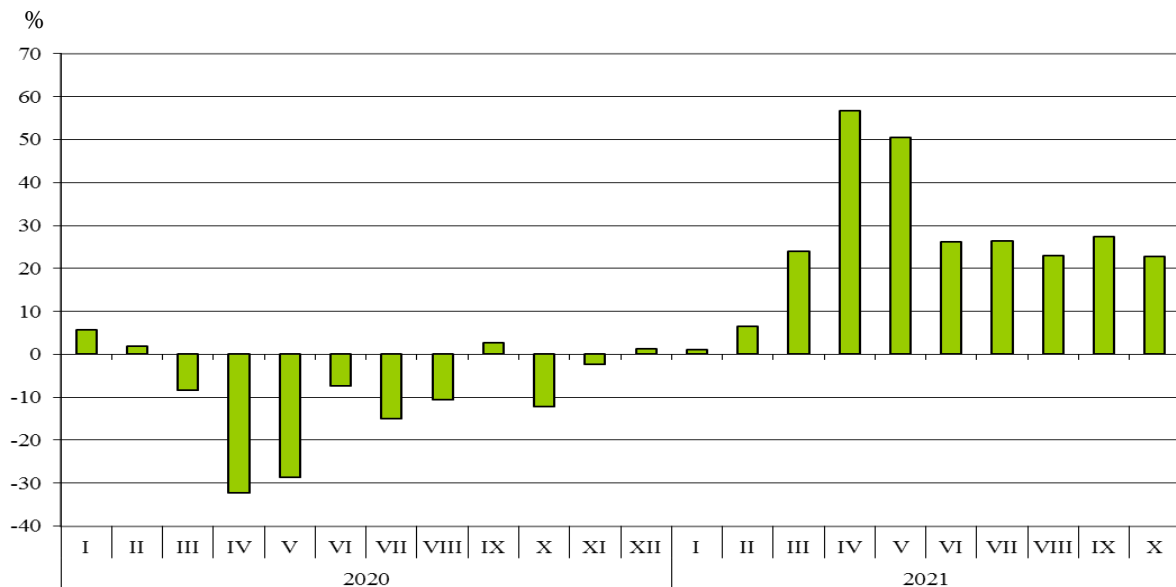
¹ Value changes at current prices.

Imports of goods to Bulgaria from the EU in the period January - October 2021 increased by 25.0% in comparison with the same period of 2020 and added up to 37 318.2 million BGN (at CIF prices)

¹ (Annex, Tables 1 and 2). The largest amounts were reported for the goods imported from Germany, Romania, Italy, Greece, the Netherlands and Hungary (Annex, Table 3).

In **October 2021**, the Bulgarian imports from the EU Member States grew by 22.8% compared to the corresponding month of the previous year and amounted to 4 118.4 million BGN.

Figure 2. Nominal value² change of imports of goods to Bulgaria from EU in the period 2020 - 2021 (Compared to the same month of the previous year)



In the period **January - October 2021**, in the imports of goods to Bulgaria from the EU Member States, distributed according to the **Standard International Trade Classification**, the largest growth compared to the corresponding period of 2020 was recorded in the section ‘Animal and vegetable oils, fats and waxes’ (134.6%). Fall was not observed in any of the sections.

The **foreign trade balance of Bulgaria (export FOB - import CIF) with the EU** in the period **January - October 2021** was negative and added up to 311.4 million BGN (Annex, Table 1).

¹ Imports at FOB prices are calculated by BNB (<http://bnb.bg/Statistics/StExternalSector/StForeignTrade/StFTImports/index.htm?toLang= EN>).

² Value changes at current prices.

Annex

Table 1

Exports, imports and trade balance of Bulgaria in the period
January - October 2020 and 2021¹ by months

(Million BGN)

Months/Periods	Exports - FOB			Imports - CIF ²			Trade balance - FOB/CIF		
	Total	EU	Non EU	Total	EU	Non EU	Total	EU	Non EU
I.2020	4990.9	3207.9	1783.0	5299.0	3098.6	2200.4	-308.1	109.3	-417.4
II.2020	4849.6	3174.6	1675.0	5216.8	3227.4	1989.4	-367.2	-52.8	-314.4
III.2020	4506.0	2883.5	1622.5	5053.6	3223.8	1829.8	-547.6	-340.3	-207.3
I - III.2020	14346.5	9266.0	5080.5	15569.4	9549.8	6019.6	-1222.9	-283.8	-939.1
IV.2020	3890.5	2444.9	1445.6	3964.4	2299.7	1664.7	-73.9	145.2	-219.1
V.2020	3844.5	2558.3	1286.2	4084.8	2447.9	1636.9	-240.3	110.4	-350.7
VI.2020	4412.7	2959.7	1453.0	4842.2	2973.3	1868.9	-429.5	-13.6	-415.9
IV - VI.2020	12147.7	7962.9	4184.8	12891.4	7720.9	5170.5	-743.7	242.0	-985.7
I - VI.2020	26494.2	17228.9	9265.3	28460.8	17270.7	11190.1	-1966.6	-41.8	-1924.8
VII.2020	4865.8	3299.3	1566.5	5113.5	3125.4	1988.1	-247.7	173.9	-421.6
VIII.2020	4160.8	2795.2	1365.6	4602.3	2826.3	1776.0	-441.5	-31.1	-410.4
IX.2020	4885.8	3177.8	1708.0	5361.9	3270.5	2091.4	-476.1	-92.7	-383.4
VII - IX.2020	13912.4	9272.3	4640.1	15077.7	9222.2	5855.5	-1165.3	50.1	-1215.4
I - IX.2020	40406.6	26501.2	13905.4	43538.5	26492.9	17045.6	-3131.9	8.3	-3140.2
X.2020	4977.1	3324.9	1652.2	5674.6	3355.0	2319.6	-697.5	-30.1	-667.4
I - X.2020	45383.7	29826.1	15557.6	49213.1	29847.9	19365.2	-3829.4	-21.8	-3807.6
I.2021	4761.0	3310.9	1450.1	5051.1	3130.4	1920.7	-290.1	180.5	-470.6
II.2021	5061.9	3319.2	1742.7	5434.6	3435.8	1998.8	-372.7	-116.6	-256.1
III.2021	5821.7	3747.0	2074.7	6689.8	3998.6	2691.2	-868.1	-251.6	-616.5
I - III.2021	15644.6	10377.1	5267.5	17175.5	10564.8	6610.7	-1530.9	-187.7	-1343.2
IV.2021	5891.6	3937.9	1953.7	6080.7	3602.0	2478.7	-189.1	335.9	-525.0
V.2021	5148.6	3359.7	1788.9	6043.0	3686.3	2356.7	-894.4	-326.6	-567.8
VI.2021	5701.3	3799.1	1902.2	6440.6	3752.4	2688.2	-739.3	46.7	-786.0
IV - VI.2021	16741.5	11096.7	5644.8	18564.3	11040.7	7523.6	-1822.8	56.0	-1878.8
I - VI.2021	32386.1	21473.8	10912.3	35739.8	21605.5	14134.3	-3353.7	-131.7	-3222.0
VII.2021	5814.3	3831.5	1982.8	6354.8	3951.4	2403.4	-540.5	-119.9	-420.6
VIII.2021	5541.1	3537.6	2003.5	6254.3	3476.5	2777.8	-713.2	61.1	-774.3
IX.2021	5988.9	3947.1	2041.8	6603.6	4166.4	2437.2	-614.7	-219.3	-395.4
VII - IX.2021	17344.3	11316.2	6028.1	19212.7	11594.3	7618.4	-1868.4	-278.1	-1590.3
I - IX.2021	49730.4	32790.0	16940.4	54952.5	33199.8	21752.7	-5222.1	-409.8	-4812.3
X.2021	6065.9	4216.8	1849.1	6852.1	4118.4	2733.7	-786.2	98.4	-884.6
I - X.2021	55796.3	37006.8	18789.5	61804.6	37318.2	24486.4	-6008.3	-311.4	-5696.9

¹ Data are preliminary as of 13-th January 2022.

² Imports at FOB prices are calculated by BNB

(http://bnb.bg/Statistics/StExternalSector/StForeignTrade/StFTImports/index.htm?toLang=_EN&toLang=_EN).

Table 2

**Value changes of exports and imports of Bulgaria in the period
January - October 2021¹ compared to the same period of the
previous year**

(Per cent)

Months/Periods	Exports - FOB			Imports - CIF		
	Total	EU	Non EU	Total	EU	Non EU
I	-4.6	3.2	-18.7	-4.7	1.0	-12.7
II	4.4	4.6	4.0	4.2	6.5	0.5
III	29.2	29.9	27.9	32.4	24.0	47.1
I - III	9.0	12.0	3.7	10.3	10.6	9.8
IV	51.4	61.1	35.1	53.4	56.6	48.9
V	33.9	31.3	39.1	47.9	50.6	44.0
VI	29.2	28.4	30.9	33.0	26.2	43.8
IV - VI	37.8	39.4	34.9	44.0	43.0	45.5
I - VI	22.2	24.6	17.8	25.6	25.1	26.3
VII	19.5	16.1	26.6	24.3	26.4	20.9
VIII	33.2	26.6	46.7	35.9	23.0	56.4
IX	22.6	24.2	19.5	23.2	27.4	16.5
VII - IX	24.7	22.0	29.9	27.4	25.7	30.1
I - IX	23.1	23.7	21.8	26.2	25.3	27.6
X	21.9	26.8	11.9	20.8	22.8	17.9
I - X	22.9	24.1	20.8	25.6	25.0	26.4

¹ Data are preliminary as of 13-th January 2022.



Table 3

**Exports, imports and trade balance by groups of countries and main partner countries¹
of Bulgaria in the period
January - October 2020 and 2021²**

Countries and groups of countries	Exports - FOB			Imports - CIF			Trade balance - FOB/CIF	
	2020	2021	Change compared to the same period of the previous year - %	2020	2021	Change compared to the same period of the previous year - %	2020	2021
	Million BGN			Million BGN			Million BGN	
Total	45383.7	55796.3	22.9	49213.1	61804.6	25.6	-3829.4	-6008.3
EU	29826.1	37006.8	24.1	29847.9	37318.2	25.0	-21.8	-311.4
Austria	891.1	1312.2	47.3	1330.1	1614.7	21.4	-439.0	-302.5
Belgium	1535.8	1663.6	8.3	881.2	1188.7	34.9	654.6	474.9
Croatia	263.0	541.7	106.0	242.5	325.9	34.4	20.5	215.8
Cyprus	184.1	235.3	27.8	76.2	134.0	75.9	107.9	101.3
Czechia	1035.7	1218.1	17.6	1257.9	1561.5	24.1	-222.2	-343.4
Denmark	318.3	504.3	58.4	241.7	284.4	17.7	76.6	219.9
Estonia	34.8	52.8	51.7	43.1	74.7	73.3	-8.3	-21.9
Finland	106.5	122.8	15.3	129.4	131.5	1.6	-22.9	-8.7
France	1761.2	2025.2	15.0	1418.4	1658.5	16.9	342.8	366.7
Germany	7369.8	8536.2	15.8	5928.3	7693.7	29.8	1441.5	842.5
Greece	3006.4	3608.5	20.0	2486.9	3161.0	27.1	519.5	447.5
Hungary	778.1	1047.2	34.6	1879.4	2301.2	22.4	-1101.3	-1254.0
Ireland	117.2	106.7	-9.0	297.9	412.8	38.6	-180.7	-306.1
Italy	3110.7	4097.1	31.7	3508.4	4104.1	17.0	-397.7	-7.0
Latvia	69.0	64.3	-6.8	38.6	49.4	28.0	30.4	14.9
Lithuania	130.9	139.9	6.9	113.5	145.0	27.8	17.4	-5.1
Luxembourg	23.9	58.5	144.8	62.5	87.3	39.7	-38.6	-28.8
Malta	40.3	36.0	-10.7	55.8	23.6	-57.7	-15.5	12.4
Netherlands	1235.5	1441.5	16.7	1974.5	2480.4	25.6	-739.0	-1038.9
Poland	1116.5	1414.2	26.7	1816.4	2227.6	22.6	-699.9	-813.4
Portugal	170.1	199.9	17.5	103.3	187.1	81.1	66.8	12.8
Romania	4126.0	5576.3	35.2	3609.3	4558.5	26.3	516.7	1017.8
Slovakia	441.7	460.7	4.3	690.6	791.0	14.5	-248.9	-330.3
Slovenia	294.8	355.0	20.4	371.5	464.5	25.0	-76.7	-109.5
Spain	1086.8	1523.3	40.2	938.2	1184.0	26.2	148.6	339.3
Sweden	404.4	445.1	10.1	301.6	377.9	25.3	102.8	67.2
Not specified	173.5	220.4	27.0	50.7	95.2	87.8	122.8	125.2

¹ Partner country:

- In case of exports (or dispatches) is the country (or Member State) of final destination of the goods.
- In case of imports (or arrivals) is the country (or Member State) of consignment of the goods.

² Data are preliminary as of 13-th January 2022.

Table 3

**Exports, imports and trade balance by groups of countries and main partner countries¹
of Bulgaria in the period
January - October 2020 and 2021²**

(Continued)

Countries and groups of countries	Exports - FOB			Imports - CIF			Trade balance - FOB/CIF	
	2020	2021	Change compared to the same period of the previous year - %	2020	2021	Change compared to the same period of the previous year - %	2020	2021
	Million BGN			Million BGN			Million BGN	
Non EU countries	15557.6	18789.5	20.8	19365.2	24486.4	26.4	-3807.6	-5696.9
CIS³	1050.1	1061.8	1.1	3171.9	4858.6	53.2	-2121.8	-3796.8
of which:								
Kazakhstan	53.6	56.4	5.2	19.0	3.6	-81.1	34.6	52.8
Russian Federation	684.0	687.4	0.5	3004.3	4547.8	51.4	-2320.3	-3860.4
OECD⁴	5945.3	7379.9	24.1	6418.4	8081.0	25.9	-473.1	-701.1
of which:								
Canada	198.0	104.8	-47.1	239.5	229.7	-4.1	-41.5	-124.9
Israel	173.9	326.8	87.9	75.8	315.7	316.5	98.1	11.1
Japan	84.4	87.3	3.4	234.8	317.0	35.0	-150.4	-229.7
Korea, Republic of	121.4	379.9	212.9	213.0	227.7	6.9	-91.6	152.2
Turkey	2849.1	3478.3	22.1	3466.8	4763.2	37.4	-617.7	-1284.9
United Kingdom ⁵	1059.6	1029.9	-2.8	601.4	490.3	-18.5	458.2	539.6
United States	893.3	1265.5	41.7	650.0	469.2	-27.8	243.3	796.3
EFTA⁶	378.5	473.5	25.1	440.7	507.6	15.2	-62.2	-34.1
of which:								
Norway	78.7	89.6	13.9	38.5	46.5	20.8	40.2	43.1
Switzerland	298.0	380.4	27.7	396.5	456.6	15.2	-98.5	-76.2

¹ Partner country:

- In case of exports (or dispatches) is the country (or Member State) of final destination of the goods.
- In case of imports (or arrivals) is the country (or Member State) of consignment of the goods.

² Data are preliminary as of 13-th January 2022.

³ CIS includes: Azerbaijan; Armenia; Belarus; Kazakhstan; Kyrgyzstan; Moldova, Republic of; Russian Federation; Tajikistan; Turkmenistan; Uzbekistan.

⁴ OECD includes: Australia; Virgin Islands (US); United States; Iceland; Canada; Mexico; New Zealand; Norway; Korea, Republic of; Turkey; United Kingdom; Switzerland; Japan; Israel and Chile.

⁵ The United Kingdom includes: Northern Ireland; Great Britain; Channel Islands and Isle of Man.

⁶ EFTA includes: Norway; Switzerland; Iceland and Liechtenstein.



Table 3

**Exports, imports and trade balance by groups of countries and main partner countries¹
of Bulgaria in the period
January - October 2020 and 2021²**

(Continued and end)

Countries and groups of countries	Exports - FOB			Imports - CIF			Trade balance - FOB/CIF	
	2020	2021	Change compared to the same period of the previous year - %	2020	2021	Change compared to the same period of the previous year - %	2020	2021
	Million BGN			Million BGN			Million BGN	
Countries not included in the upper groups								
Albania	142.9	186.0	30.2	55.4	60.6	9.4	87.5	125.4
Bosnia and Herzegovina	132.4	149.1	12.6	35.1	47.0	33.9	97.3	102.1
Brazil	76.0	56.3	-25.9	125.2	345.1	175.6	-49.2	-288.8
China	1470.8	1818.0	23.6	2529.4	3392.9	34.1	-1058.6	-1574.9
Egypt	269.9	383.3	42.0	617.7	459.2	-25.7	-347.8	-75.9
Georgia	218.0	316.5	45.2	739.7	560.9	-24.2	-521.7	-244.4
India	184.6	198.8	7.7	238.6	342.3	43.5	-54.0	-143.5
Indonesia	63.0	117.9	87.1	180.6	50.5	-72.0	-117.6	67.4
Iran, Islamic Republic of	167.6	137.3	-18.1	32.3	90.1	178.9	135.3	47.2
Peru	12.7	7.0	-44.9	482.4	450.8	-6.6	-469.7	-443.8
Republic of North Macedonia	727.9	878.5	20.7	479.2	601.4	25.5	248.7	277.1
Serbia	796.3	1148.6	44.2	1006.6	1190.9	18.3	-210.3	-42.3
Singapore	34.7	50.1	44.4	56.4	67.1	19.0	-21.7	-17.0
South Africa	196.0	130.4	-33.5	48.2	71.2	47.7	147.8	59.2
Syrian Arab Republic	4.8	7.8	62.5	0.5	3.8	660.0	4.3	4.0
Taiwan	69.9	54.4	-22.2	173.2	267.8	54.6	-103.3	-213.4
Tunisia	218.7	402.7	84.1	26.0	31.8	22.3	192.7	370.9
Ukraine	358.6	668.0	86.3	884.5	1325.7	49.9	-525.9	-657.7
United Arab Emirates	115.2	126.8	10.1	44.4	58.1	30.9	70.8	68.7
Viet Nam	61.8	173.7	181.1	114.6	167.9	46.5	-52.8	5.8

¹ Partner country:

- In case of exports (or dispatches) is the country (or Member State) of final destination of the goods.
- In case of imports (or arrivals) is the country (or Member State) of consignment of the goods.

² Data are preliminary as of 13-th January 2022.



Table 4

Exports, imports and trade balance of Bulgaria by sections of SITC, rev. 4
in the period
January - October 2020 and 2021¹

Sections by SITC	Exports - FOB			Imports - CIF			Trade balance - FOB/CIF	
	2020	2021	Change compared to the same period of the previous year - %	2020	2021	Change compared to the same period of the previous year - %	2020	2021
	Million BGN			Million BGN			Million BGN	
Total	45383.7	55796.3	22.9	49213.1	61804.6	25.6	-3829.4	-6008.3
of which: EU	29826.1	37006.8	24.1	29847.9	37318.2	25.0	-21.8	-311.4
Food and live animals	5316.1	6672.5	25.5	4233.1	4701.9	11.1	1083.0	1970.6
of which: EU	3347.9	3969.1	18.6	3283.0	3625.6	10.4	64.9	343.5
Beverages and tobacco	618.9	514.4	-16.9	975.9	1041.9	6.8	-357.0	-527.5
of which: EU	435.8	361.3	-17.1	769.5	790.7	2.8	-333.7	-429.4
Crude materials, inedible (except fuel)	3301.7	4283.1	29.7	5113.9	5453.4	6.6	-1812.2	-1170.3
of which: EU	2020.5	2592.4	28.3	1023.1	1439.9	40.7	997.4	1152.5
Mineral fuel, lubricants and related materials	2194.5	3260.2	48.6	4197.1	6866.6	63.6	-2002.6	-3606.4
of which: EU	848.3	1440.3	69.8	1230.7	2021.4	64.2	-382.4	-581.1
Animal and vegetable oils, fats and waxes	689.5	1117.2	62.0	240.9	390.6	62.1	448.6	726.6
of which: EU	350.9	764.2	117.8	109.0	255.7	134.6	241.9	508.5
Chemical and related products n.e.c.	5286.3	6318.3	19.5	7586.9	9519.6	25.5	-2300.6	-3201.3
of which: EU	3199.2	4107.8	28.4	5738.2	7124.2	24.2	-2539.0	-3016.4
Manufactured goods classified chiefly by material	10376.1	12924.1	24.6	8517.8	10767.0	26.4	1858.3	2157.1
of which: EU	6723.9	8581.7	27.6	4669.9	5597.4	19.9	2054.0	2984.3
Machinery and transport equipment	10691.8	12850.9	20.2	13705.4	17341.2	26.5	-3013.6	-4490.3
of which: EU	8046.6	9719.4	20.8	9843.5	12633.6	28.3	-1796.9	-2914.2
Miscellaneous manufactured articles	6732.2	7645.3	13.6	4262.5	5252.3	23.2	2469.7	2393.0
of which: EU	4728.7	5331.0	12.7	2841.2	3415.6	20.2	1887.5	1915.4
Commodities and transactions n.e.c.	176.6	210.3	19.1	379.6	470.1	23.8	-203.0	-259.8
of which: EU	124.3	139.6	12.3	339.8	414.1	21.9	-215.5	-274.5

¹Data are preliminary as of 13-th January 2022.