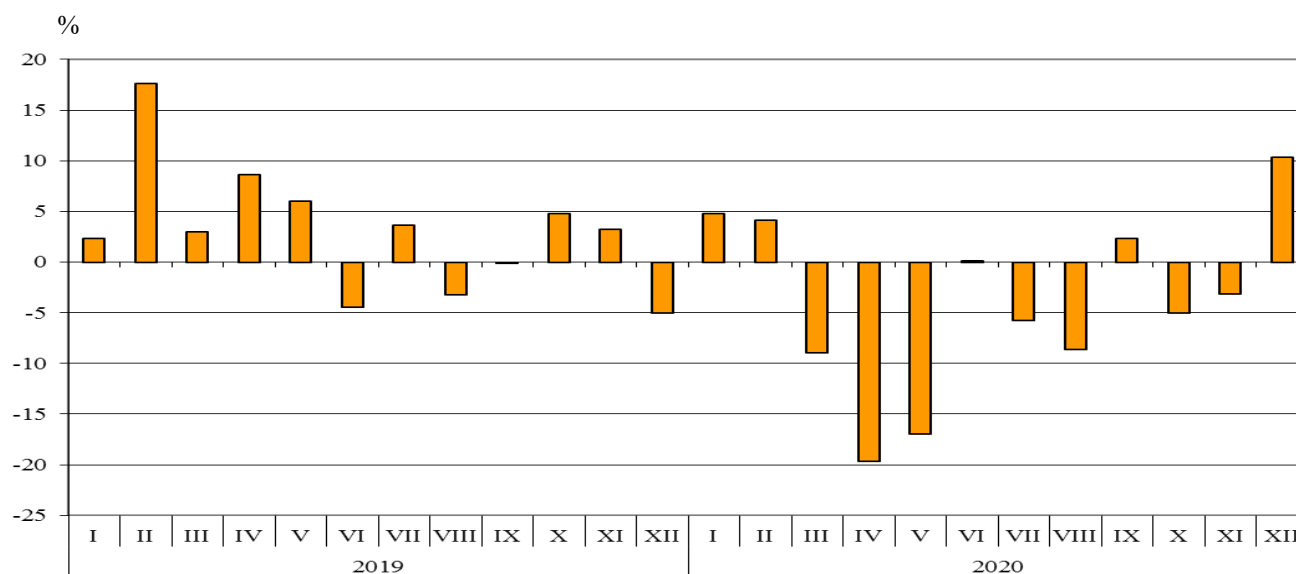


## TRADE IN GOODS OF BULGARIA WITH EU IN 2020 (PRELIMINARY DATA)

In **2020 the exports of goods from Bulgaria to the EU** decreased by 4.1% in comparison with 2019 and added up to 35 836.5 Million BGN (Annex, Tables 1 and 2). Main trade partners of Bulgaria were Germany, Romania, Italy, Greece, France and Belgium which accounted for 70.2% of the exports to the EU Member States (Annex, Table 3).

In **December 2020** the exports of goods from Bulgaria to the EU increased by 10.3% compared to the corresponding month of the previous year and amounted to 2 705.2 Million BGN.

**Figure 1. Nominal value<sup>1</sup> change of exports of goods from Bulgaria to EU in the period 2019 - 2020  
(Compared to the same month of the previous year)**



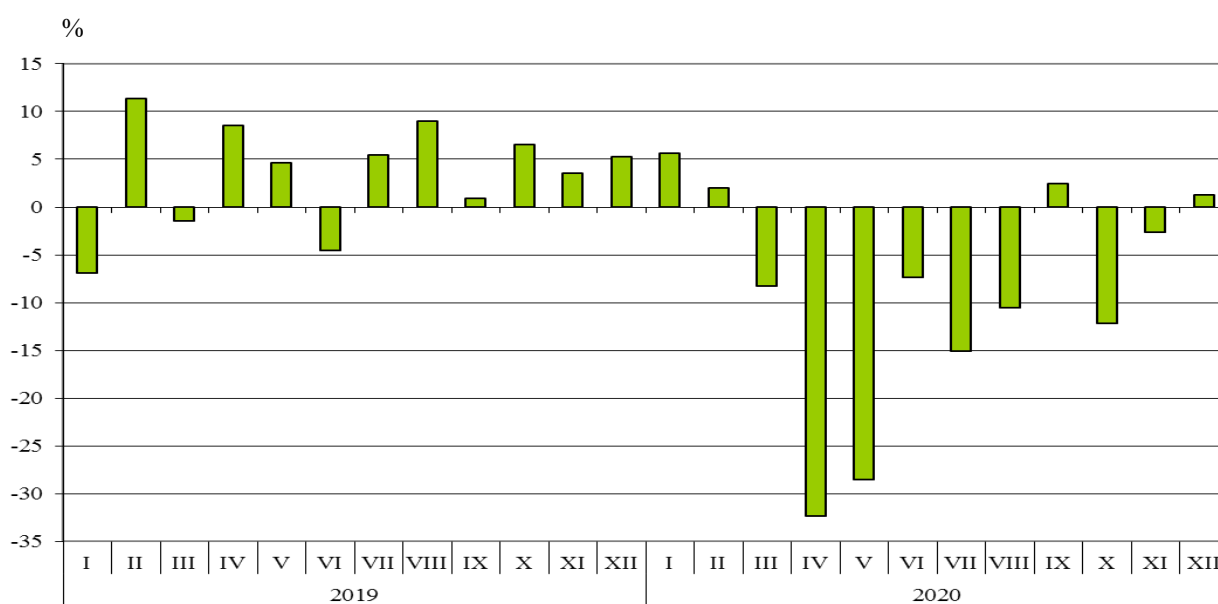
In **2020** in the exports of goods from Bulgaria to the EU, distributed according to the **Standard International Trade Classification**, the most notable growth compared to 2019 was recorded in sections 'Animals and vegetable oils, fats and waxes' (32.3%) and 'Beverages and tobacco' (23.0%) (Annex, Table 4). The most notable fall was reported in section 'Mineral fuel, lubricants and related materials' (42.7%).

<sup>1</sup> Value changes at current prices.

**Imports of goods to Bulgaria from the EU in 2020** decreased by 9.2% in comparison with 2019 and added up to 36 555.6 Million BGN (at CIF prices)<sup>1</sup> (Annex, Tables 1 and 2). The largest amounts were reported for the goods imported from Germany, Romania, Italy, Greece and the Netherlands (Annex, Table 3).

In **December 2020** the imports of goods to Bulgaria from the EU Member States grew by 1.3% compared to the corresponding month of the previous year and amounted to 3 184.2 Million BGN.

**Figure 2. Nominal value<sup>2</sup> change of imports of goods to Bulgaria from EU in the period 2019 - 2020 (Compared to the same month of the previous year)**



In **2020** in the imports of goods to Bulgaria from the EU Member States, distributed according to the **Standard International Trade Classification**, the largest growth compared to 2019 was recorded in the section ‘Animals and vegetable oils, fats and waxes’ (9.9%). The most notable fall was observed in the section ‘Crude materials, inedible (except fuel)’<sup>3</sup> (50.2%).

The **foreign trade balance** of Bulgaria (export FOB - import CIF) **with the EU in 2020** was negative and added up to 719.1 Million BGN (Annex, Table 1).

<sup>1</sup> Imports at FOB prices are calculated by BNB ([http://bnb.bg/Statistics/StExternalSector/StForeignTrade/StFTImports/index.htm?toLang=\\_EN](http://bnb.bg/Statistics/StExternalSector/StForeignTrade/StFTImports/index.htm?toLang=_EN)).

<sup>2</sup> Value changes at current prices.

<sup>3</sup> The section includes the following divisions: raw hides, skins and furskins; oil-seeds and oleaginous fruits; crude rubber; cork and wood; pulp and waste paper; textile fibres and their wastes; crude fertilizers and crude minerals; metalliferous ores and metal scrap; crude animal and vegetable materials, n.e.c.

Annex

Table 1

Exports, imports and trade balance of Bulgaria in 2019 and 2020<sup>1</sup> by months

(Million BGN)

Months/Periods	Exports - FOB			Imports - CIF <sup>2</sup>			Trade balance - FOB/CIF		
	Total	EU <sup>3</sup>	Non EU <sup>4</sup>	Total	EU <sup>3</sup>	Non EU <sup>4</sup>	Total	EU <sup>3</sup>	Non EU <sup>4</sup>
I.2019	4694.9	3062.4	1632.5	5065.6	2933.6	2132.0	-370.7	128.8	-499.5
II.2019	4698.3	3050.3	1648.0	5341.8	3164.6	2177.2	-643.5	-114.3	-529.2
III.2019	4809.0	3166.4	1642.6	5379.6	3515.8	1863.8	-570.6	-349.4	-221.2
<b>I - III.2019</b>	<b>14202.2</b>	<b>9279.1</b>	<b>4923.1</b>	<b>15787.0</b>	<b>9614.0</b>	<b>6173.0</b>	<b>-1584.8</b>	<b>-334.9</b>	<b>-1249.9</b>
IV.2019	4675.9	3044.0	1631.9	5578.2	3394.0	2184.2	-902.3	-350.0	-552.3
V.2019	4756.7	3082.0	1674.7	5661.0	3427.8	2233.2	-904.3	-345.8	-558.5
VI.2019	4639.8	2956.4	1683.4	5146.0	3208.2	1937.8	-506.2	-251.8	-254.4
<b>IV - VI.2019</b>	<b>14072.4</b>	<b>9082.4</b>	<b>4990.0</b>	<b>16385.2</b>	<b>10030.0</b>	<b>6355.2</b>	<b>-2312.8</b>	<b>-947.6</b>	<b>-1365.2</b>
<b>I - VI.2019</b>	<b>28274.6</b>	<b>18361.5</b>	<b>9913.1</b>	<b>32172.2</b>	<b>19644.0</b>	<b>12528.2</b>	<b>-3897.6</b>	<b>-1282.5</b>	<b>-2615.1</b>
VII.2019	5358.2	3500.8	1857.4	5968.2	3676.0	2292.2	-610.0	-175.2	-434.8
VIII.2019	4845.2	3061.7	1783.5	5081.0	3158.6	1922.4	-235.8	-96.9	-138.9
IX.2019	4920.0	3108.5	1811.5	5365.8	3184.7	2181.1	-445.8	-76.2	-369.6
<b>VII - IX.2019</b>	<b>15123.4</b>	<b>9671.0</b>	<b>5452.4</b>	<b>16415.0</b>	<b>10019.3</b>	<b>6395.7</b>	<b>-1291.6</b>	<b>-348.3</b>	<b>-943.3</b>
<b>I - IX.2019</b>	<b>43398.0</b>	<b>28032.5</b>	<b>15365.5</b>	<b>48587.2</b>	<b>29663.3</b>	<b>18923.9</b>	<b>-5189.2</b>	<b>-1630.8</b>	<b>-3558.4</b>
X.2019	5502.4	3496.0	2006.4	6195.9	3817.4	2378.5	-693.5	-321.4	-372.1
XI.2019	5361.8	3406.0	1955.8	5706.8	3631.8	2075.0	-345.0	-225.8	-119.2
XII.2019	4197.2	2452.2	1745.0	5500.0	3144.6	2355.4	-1302.8	-692.4	-610.4
<b>X - XII.2019</b>	<b>15061.4</b>	<b>9354.2</b>	<b>5707.2</b>	<b>17402.7</b>	<b>10593.8</b>	<b>6808.9</b>	<b>-2341.3</b>	<b>-1239.6</b>	<b>-1101.7</b>
<b>I - XII.2019</b>	<b>58459.4</b>	<b>37386.7</b>	<b>21072.7</b>	<b>65989.9</b>	<b>40257.1</b>	<b>25732.8</b>	<b>-7530.5</b>	<b>-2870.4</b>	<b>-4660.1</b>
I.2020	4989.4	3209.3	1780.1	5302.3	3100.0	2202.3	-312.9	109.3	-422.2
II.2020	4847.8	3176.1	1671.7	5276.4	3228.3	2048.1	-428.6	-52.2	-376.4
III.2020	4505.9	2884.1	1621.8	5053.6	3225.3	1828.3	-547.7	-341.2	-206.5
<b>I - III.2020</b>	<b>14343.1</b>	<b>9269.5</b>	<b>5073.6</b>	<b>15632.3</b>	<b>9553.6</b>	<b>6078.7</b>	<b>-1289.2</b>	<b>-284.1</b>	<b>-1005.1</b>
IV.2020	3889.5	2445.1	1444.4	3962.1	2295.9	1666.2	-72.6	149.2	-221.8
V.2020	3842.4	2558.8	1283.6	4085.3	2448.8	1636.5	-242.9	110.0	-352.9
VI.2020	4409.7	2960.2	1449.5	4841.2	2972.8	1868.4	-431.5	-12.6	-418.9
<b>IV - VI.2020</b>	<b>12141.6</b>	<b>7964.1</b>	<b>4177.5</b>	<b>12888.6</b>	<b>7717.5</b>	<b>5171.1</b>	<b>-747.0</b>	<b>246.6</b>	<b>-993.6</b>
<b>I - VI.2020</b>	<b>26484.7</b>	<b>17233.6</b>	<b>9251.1</b>	<b>28520.9</b>	<b>17271.1</b>	<b>11249.8</b>	<b>-2036.2</b>	<b>-37.5</b>	<b>-1998.7</b>
VII.2020	4865.1	3299.3	1565.8	5111.2	3122.1	1989.1	-246.1	177.2	-423.3
VIII.2020	4167.1	2797.0	1370.1	4602.1	2825.8	1776.3	-435.0	-28.8	-406.2
IX.2020	4887.5	3182.2	1705.3	5344.3	3261.9	2082.4	-456.8	-79.7	-377.1
<b>VII - IX.2020</b>	<b>13919.7</b>	<b>9278.5</b>	<b>4641.2</b>	<b>15057.6</b>	<b>9209.8</b>	<b>5847.8</b>	<b>-1137.9</b>	<b>68.7</b>	<b>-1206.6</b>
<b>I - IX.2020</b>	<b>40404.4</b>	<b>26512.1</b>	<b>13892.3</b>	<b>43578.5</b>	<b>26480.9</b>	<b>17097.6</b>	<b>-3174.1</b>	<b>31.2</b>	<b>-3205.3</b>
X.2020	4951.9	3320.7	1631.2	5666.4	3352.8	2313.6	-714.5	-32.1	-682.4
XI.2020	4897.2	3298.5	1598.7	5685.6	3537.7	2147.9	-788.4	-239.2	-549.2
XII.2020	4448.5	2705.2	1743.3	5172.2	3184.2	1988.0	-723.7	-479.0	-244.7
<b>X - XII.2020</b>	<b>14297.6</b>	<b>9324.4</b>	<b>4973.2</b>	<b>16524.2</b>	<b>10074.7</b>	<b>6449.5</b>	<b>-2226.6</b>	<b>-750.3</b>	<b>-1476.3</b>
<b>I - XII.2020</b>	<b>54702.0</b>	<b>35836.5</b>	<b>18865.5</b>	<b>60102.7</b>	<b>36555.6</b>	<b>23547.1</b>	<b>-5400.7</b>	<b>-719.1</b>	<b>-4681.6</b>

<sup>1</sup> Data are preliminary as of 12-th March 2021.

<sup>2</sup> Imports at FOB prices are calculated by BNB

([http://bnb.bg/Statistics/StExternalSector/StForeignTrade/StFTImports/index.htm?toLang=\\_EN&toLang=\\_EN](http://bnb.bg/Statistics/StExternalSector/StForeignTrade/StFTImports/index.htm?toLang=_EN&toLang=_EN)).

<sup>3</sup> EU excluding the United Kingdom.

<sup>4</sup> Non EU including the United Kingdom.

Table 2

**Value changes of exports and imports of Bulgaria in 2020<sup>1</sup>  
compared to the same period of the previous year**

(Per cent)

Months/Periods	Exports - FOB			Imports - CIF		
	Total	EU <sup>2</sup>	Non EU <sup>3</sup>	Total	EU <sup>2</sup>	Non EU <sup>3</sup>
I	6.3	4.8	9.0	4.7	5.7	3.3
II	3.2	4.1	1.4	-1.2	2.0	-5.9
III	-6.3	-8.9	-1.3	-6.1	-8.3	-1.9
<b>I - III</b>	<b>1.0</b>	<b>-0.1</b>	<b>3.1</b>	<b>-1.0</b>	<b>-0.6</b>	<b>-1.5</b>
IV	-16.8	-19.7	-11.5	-29.0	-32.4	-23.7
V	-19.2	-17.0	-23.4	-27.8	-28.6	-26.7
VI	-5.0	0.1	-13.9	-5.9	-7.3	-3.6
<b>IV - VI</b>	<b>-13.7</b>	<b>-12.3</b>	<b>-16.3</b>	<b>-21.3</b>	<b>-23.1</b>	<b>-18.6</b>
<b>I - VI</b>	<b>-6.3</b>	<b>-6.1</b>	<b>-6.7</b>	<b>-11.3</b>	<b>-12.1</b>	<b>-10.2</b>
VII	-9.2	-5.8	-15.7	-14.4	-15.1	-13.2
VIII	-14.0	-8.6	-23.2	-9.4	-10.5	-7.6
IX	-0.7	2.4	-5.9	-0.4	2.4	-4.5
<b>VII - IX</b>	<b>-8.0</b>	<b>-4.1</b>	<b>-14.9</b>	<b>-8.3</b>	<b>-8.1</b>	<b>-8.6</b>
<b>I - IX</b>	<b>-6.9</b>	<b>-5.4</b>	<b>-9.6</b>	<b>-10.3</b>	<b>-10.7</b>	<b>-9.7</b>
X	-10.0	-5.0	-18.7	-8.5	-12.2	-2.7
XI	-8.7	-3.2	-18.3	-0.4	-2.6	3.5
XII	6.0	10.3	-0.1	-6.0	1.3	-15.6
<b>X - XII</b>	<b>-5.1</b>	<b>-0.3</b>	<b>-12.9</b>	<b>-5.0</b>	<b>-4.9</b>	<b>-5.3</b>
<b>I - XII</b>	<b>-6.4</b>	<b>-4.1</b>	<b>-10.5</b>	<b>-8.9</b>	<b>-9.2</b>	<b>-8.5</b>

<sup>1</sup> Data are preliminary as of 12-th March 2021.

<sup>2</sup> EU excluding the United Kingdom.

<sup>3</sup> Non EU including the United Kingdom.

**Table 3**  
**Exports, imports and trade balance by groups of countries and main partner countries<sup>1</sup> of Bulgaria in 2019 and 2020<sup>2</sup>**

Countries and groups of countries	Exports - FOB			Imports - CIF			Trade balance - FOB/CIF	
	2019	2020	Change compared to the same period of the previous year - %	2019	2020	Change compared to the same period of the previous year - %	2019	2020
	Million BGN			Million BGN			Million BGN	
<b>Total</b>	<b>58459.4</b>	<b>54702.0</b>	<b>-6.4</b>	<b>65989.9</b>	<b>60102.7</b>	<b>-8.9</b>	<b>-7530.5</b>	<b>-5400.7</b>
<b>EU<sup>3</sup></b>	<b>37386.7</b>	<b>35836.5</b>	<b>-4.1</b>	<b>40257.1</b>	<b>36555.6</b>	<b>-9.2</b>	<b>-2870.4</b>	<b>-719.1</b>
Austria	1068.9	1049.6	-1.8	1645.1	1607.6	-2.3	-576.2	-558.0
Belgium	1664.3	1884.9	13.3	1256.2	1143.4	-9.0	408.1	741.5
Croatia	288.5	323.1	12.0	159.5	351.9	120.6	129.0	-28.8
Cyprus	216.5	227.8	5.2	282.1	91.0	-67.7	-65.6	136.8
Czechia	1388.0	1267.6	-8.7	1665.0	1593.7	-4.3	-277.0	-326.1
Denmark	345.5	380.0	10.0	282.7	289.4	2.4	62.8	90.6
Estonia	50.2	41.1	-18.1	58.7	52.3	-10.9	-8.5	-11.2
Finland	125.3	126.2	0.7	133.0	157.4	18.3	-7.7	-31.2
France	2204.8	2100.9	-4.7	1978.2	1735.1	-12.3	226.6	365.8
Germany	8625.3	8775.7	1.7	7925.1	7267.2	-8.3	700.2	1508.5
Greece	3925.5	3645.4	-7.1	3028.8	2965.8	-2.1	896.7	679.6
Hungary	1009.2	950.8	-5.8	2332.8	2345.9	0.6	-1323.6	-1395.1
Ireland	162.9	129.7	-20.4	356.3	362.0	1.6	-193.4	-232.3
Italy	4276.5	3760.7	-12.1	4907.1	4250.0	-13.4	-630.6	-489.3
Latvia	59.0	83.7	41.9	61.6	52.7	-14.4	-2.6	31.0
Lithuania	141.9	160.4	13.0	146.4	141.9	-3.1	-4.5	18.5
Luxembourg	25.5	30.0	17.6	84.7	76.1	-10.2	-59.2	-46.1
Malta	43.5	46.9	7.8	49.3	59.8	21.3	-5.8	-12.9
Netherlands	1479.8	1440.6	-2.6	2359.4	2382.2	1.0	-879.6	-941.6
Poland	1263.1	1359.5	7.6	2243.5	2223.2	-0.9	-980.4	-863.7
Portugal	307.8	202.6	-34.2	180.7	128.3	-29.0	127.1	74.3
Romania	5081.5	4975.1	-2.1	4712.2	4400.6	-6.6	369.3	574.5
Slovakia	589.3	528.8	-10.3	858.5	838.1	-2.4	-269.2	-309.3
Slovenia	481.7	358.5	-25.6	525.3	459.9	-12.5	-43.6	-101.4
Spain	1589.5	1308.6	-17.7	2481.0	1144.4	-53.9	-891.5	164.2
Sweden	513.2	483.5	-5.8	390.3	360.6	-7.6	122.9	122.9
Not specified	459.5	194.8	-57.6	153.6	75.1	-51.1	305.9	119.7

<sup>1</sup> Partner country:

- In case of exports (or dispatches) is the country (or Member State) of final destination of the goods.
- In case of imports (or arrivals) is the country (or Member State) of consignment of the goods.

<sup>2</sup> Data are preliminary as of 12-th March 2021.

<sup>3</sup> EU excluding the United Kingdom.

Table 3

**Exports, imports and trade balance by groups of countries and main partner countries<sup>1</sup> of Bulgaria in 2019 and 2020<sup>2</sup>**

(Continued)

Countries and groups of countries	Exports - FOB			Imports - CIF			Trade balance - FOB/CIF	
	2019	2020	Change compared to the same period of the previous year - %	2019	2020	Change compared to the same period of the previous year - %	2019	2020
	Million BGN			Million BGN			Million BGN	
<b>Non EU countries<sup>3</sup></b>	<b>21072.7</b>	<b>18865.5</b>	<b>-10.5</b>	<b>25732.8</b>	<b>23547.1</b>	<b>-8.5</b>	<b>-4660.1</b>	<b>-4681.6</b>
<b>CIS<sup>4</sup></b>	<b>1460.9</b>	<b>1267.8</b>	<b>-13.2</b>	<b>6760.8</b>	<b>3951.9</b>	<b>-41.5</b>	<b>-5299.9</b>	<b>-2684.1</b>
of which:								
Kazakhstan	66.1	64.7	-2.1	6.3	26.9	327.0	59.8	37.8
Russian Federation	1027.4	824.3	-19.8	6515.0	3736.6	-42.6	-5487.6	-2912.3
<b>OECD<sup>5</sup></b>	<b>8329.3</b>	<b>7294.2</b>	<b>-12.4</b>	<b>7394.5</b>	<b>7822.8</b>	<b>5.8</b>	<b>934.8</b>	<b>-528.6</b>
of which:								
Canada	217.9	230.8	5.9	145.0	289.4	99.6	72.9	-58.6
Israel	277.2	201.6	-27.3	91.1	127.1	39.5	186.1	74.5
Japan	98.8	99.8	1.0	285.8	298.0	4.3	-187.0	-198.2
Korea, Republic of	257.0	179.0	-30.4	290.4	262.3	-9.7	-33.4	-83.3
Turkey	4247.8	3525.7	-17.0	4299.7	4250.3	-1.1	-51.9	-724.6
United Kingdom	1368.9	1302.7	-4.8	900.8	762.6	-15.3	468.1	540.1
United States	1108.4	1082.3	-2.4	630.8	774.2	22.7	477.6	308.1
<b>EFTA<sup>6</sup></b>	<b>463.9</b>	<b>447.9</b>	<b>-3.4</b>	<b>555.9</b>	<b>529.5</b>	<b>-4.7</b>	<b>-92.0</b>	<b>-81.6</b>
of which:								
Norway	83.5	91.3	9.3	44.4	44.8	0.9	39.1	46.5
Switzerland	377.9	354.4	-6.2	508.1	478.7	-5.8	-130.2	-124.3

<sup>1</sup> Partner country:

- In case of exports (or dispatches) is the country (or Member State) of final destination of the goods.
- In case of imports (or arrivals) is the country (or Member State) of consignment of the goods.

<sup>2</sup> Data are preliminary as of 12-th March 2021.

<sup>3</sup> Non EU including the United Kingdom.

<sup>4</sup> CIS includes: Azerbaijan; Armenia; Belarus; Kazakhstan; Kyrgyzstan; Moldova, Republic of; Russian Federation; Tajikistan; Turkmenistan; Uzbekistan.

<sup>5</sup> OECD includes: Australia; Virgin Islands (US); United States; Iceland; Canada; Mexico; New Zealand; Norway; Korea, Republic of; Turkey; United Kingdom; Switzerland; Japan; Israel and Chile.

<sup>6</sup> EFTA includes: Norway; Switzerland; Iceland and Liechtenstein.

Table 3

**Exports, imports and trade balance by groups of countries and main partner countries<sup>1</sup> of Bulgaria in 2019 and 2020<sup>2</sup>**

(Continued and end)

Countries and groups of countries	Exports - FOB			Imports - CIF			Trade balance - FOB/CIF	
	2019	2020	Change compared to the same period of the previous year - %	2019	2020	Change compared to the same period of the previous year - %	2019	2020
	Million BGN			Million BGN			Million BGN	
<b>Countries not included in the upper groups</b>								
Albania	168.8	174.6	3.4	55.5	75.9	36.8	113.3	98.7
Bosnia and Herzegovina	124.7	158.0	26.7	49.6	41.2	-16.9	75.1	116.8
Brazil	61.5	83.8	36.3	100.4	196.4	95.6	-38.9	-112.6
China	1612.7	1802.9	11.8	2976.2	3059.3	2.8	-1363.5	-1256.4
Egypt	764.8	324.0	-57.6	1459.0	659.1	-54.8	-694.2	-335.1
Georgia	295.9	258.7	-12.6	660.4	916.4	38.8	-364.5	-657.7
India	222.8	219.5	-1.5	328.1	283.1	-13.7	-105.3	-63.6
Indonesia	123.7	67.8	-45.2	271.2	231.4	-14.7	-147.5	-163.6
Iran, Islamic Republic of	125.2	187.2	49.5	66.5	40.3	-39.4	58.7	146.9
Peru	27.7	13.1	-52.7	92.4	532.8	476.6	-64.7	-519.7
Republic of North Macedonia	829.4	852.1	2.7	639.2	587.8	-8.0	190.2	264.3
Serbia	1145.2	972.5	-15.1	1236.5	1202.9	-2.7	-91.3	-230.4
Singapore	196.8	39.2	-80.1	78.0	66.8	-14.4	118.8	-27.6
South Africa	195.1	212.6	9.0	95.3	55.8	-41.4	99.8	156.8
Syrian Arab Republic	51.2	6.8	-86.7	0.5	0.8	60.0	50.7	6.0
Taiwan	55.2	79.0	43.1	202.4	214.6	6.0	-147.2	-135.6
Tunisia	539.3	256.1	-52.5	40.5	30.5	-24.7	498.8	225.6
Ukraine	666.7	443.7	-33.4	1048.2	1141.2	8.9	-381.5	-697.5
United Arab Emirates	216.8	137.6	-36.5	63.1	57.6	-8.7	153.7	80.0
Viet Nam	79.1	77.4	-2.1	133.0	132.6	-0.3	-53.9	-55.2

<sup>1</sup> Partner country:

- In case of exports (or dispatches) is the country (or Member State) of final destination of the goods.
- In case of imports (or arrivals) is the country (or Member State) of consignment of the goods.

<sup>2</sup> Data are preliminary as of 12-th March 2021.

Table 4

Exports, imports and trade balance of Bulgaria by sections of SITC, rev. 4  
in 2019 and 2020<sup>1</sup>

Sections by SITC	Exports - FOB			Imports - CIF			Trade balance - FOB/CIF	
	2019	2020	Change compared to the same period of the previous year - %	2019	2020	Change compared to the same period of the previous year - %	2019	2020
	Million BGN			Million BGN			Million BGN	
<b>Total</b>	<b>58459.4</b>	<b>54702.0</b>	<b>-6.4</b>	<b>65989.9</b>	<b>60102.7</b>	<b>-8.9</b>	<b>-7530.5</b>	<b>-5400.7</b>
<b>of which: EU<sup>2</sup></b>	<b>37386.7</b>	<b>35836.5</b>	<b>-4.1</b>	<b>40257.1</b>	<b>36555.6</b>	<b>-9.2</b>	<b>-2870.4</b>	<b>-719.1</b>
Food and live animals	6799.6	6425.5	-5.5	5062.5	5154.0	1.8	1737.1	1271.5
of which: EU	4444.8	4091.7	-7.9	3952.9	4009.5	1.4	491.9	82.2
Beverages and tobacco	714.1	730.4	2.3	1161.4	1155.5	-0.5	-447.3	-425.1
of which: EU	417.1	513.1	23.0	877.0	914.6	4.3	-459.9	-401.5
Crude materials, inedible (except fuel)	3970.0	3911.3	-1.5	5364.8	6195.4	15.5	-1394.8	-2284.1
of which: EU	2453.3	2362.3	-3.7	2544.8	1267.4	-50.2	-91.5	1094.9
Mineral fuel, lubricants and related materials	5574.6	2545.0	-54.3	9139.6	5174.5	-43.4	-3565.0	-2629.5
of which: EU	1735.6	994.0	-42.7	1781.1	1482.3	-16.8	-45.5	-488.3
Animals and vegetable oils, fats and waxes	616.0	834.6	35.5	220.7	312.8	41.7	395.3	521.8
of which: EU	348.3	460.7	32.3	121.8	133.9	9.9	226.5	326.8
Chemical and related products n.e.c.	6396.4	6373.1	-0.4	9335.1	9142.5	-2.1	-2938.7	-2769.4
of which: EU	3725.6	3848.2	3.3	6954.9	6917.2	-0.5	-3229.3	-3069.0
Manufactured goods classified chiefly by material	11776.7	12451.9	5.7	11050.4	10170.3	-8.0	726.3	2281.6
of which: EU	7745.6	8027.2	3.6	6014.8	5628.6	-6.4	1730.8	2398.6
Machinery and transport equipment	13671.2	13004.4	-4.9	18513.2	17071.2	-7.8	-4842.0	-4066.8
of which: EU	10159.3	9728.7	-4.2	13807.9	12276.7	-11.1	-3648.6	-2548.0
Miscellaneous manufactured articles	8748.8	8202.5	-6.2	5746.5	5259.9	-8.5	3002.3	2942.6
of which: EU	6217.6	5650.8	-9.1	3855.3	3510.5	-8.9	2362.3	2140.3
Commodities and transactions n.e.c.	192.0	223.3	16.3	395.7	466.6	17.9	-203.7	-243.3
of which: EU	139.5	159.8	14.6	346.6	414.9	19.7	-207.1	-255.1

<sup>1</sup>Data are preliminary as of 12-th March 2021.

<sup>2</sup>EU excluding the United Kingdom.