

EMPLOYEES UNDER LABOUR CONTRACT AND GROSS AVERAGE WAGES AND SALARIES, FOURTH QUARTER OF 2020

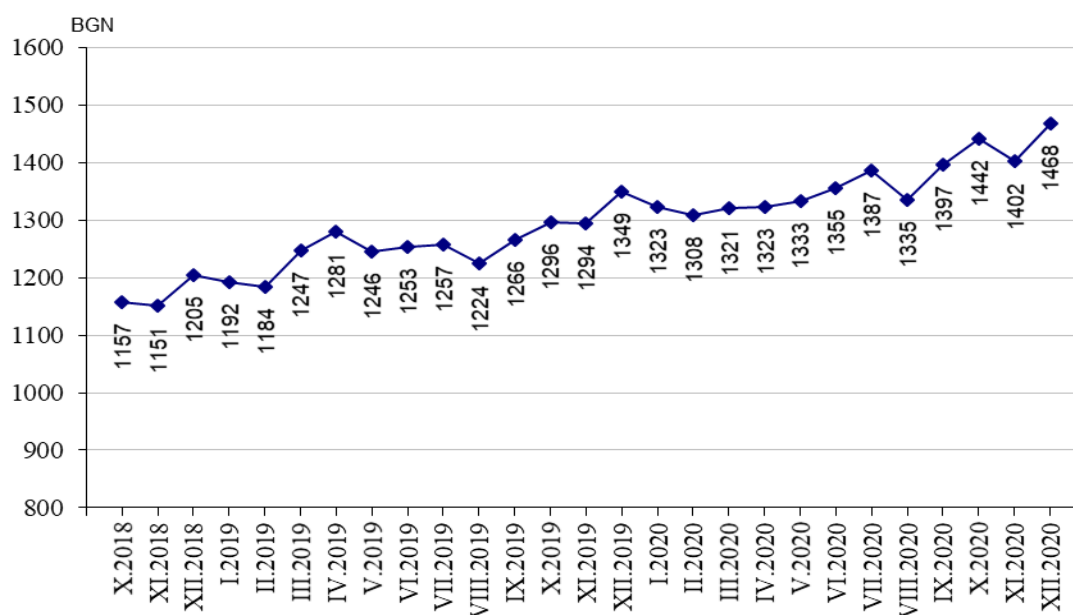
According to the preliminary data of the National Statistical Institute (NSI) at the end of December 2020 the **number of employees** under labour contract decreased by 20.8 thousand or 0.9% as compared to the end of September 2020 and reached 2.23 million. The highest decrease was observed in economic activities: ‘Accommodation and food service activities’ - by 14.2%, ‘Agriculture, forestry and fishing’ - by 7.3%, and in ‘Administrative and support service activities’ - by 3.0%. The highest increase of the number of employees was recorded in economic activities: ‘Human health and social work activities’ - by 1.0% and ‘Education’ - by 0.8%.

In the structure of employees by economic activities the biggest relative share of employees was in ‘Manufacturing’ - 21.0% and ‘Wholesale and retail trade; repair of motor vehicles and motorcycles’ - 17.4%.

At the end of December 2020 as compared to December 2019 the number of employees under labour contract decreased by 60.3 thousand or 2.6%. The highest decrease in absolute figures was observed in economic activities ‘Accommodation and food service activities’ - 25.9 thousand, ‘Manufacturing’ - 22.4 thousand, and ‘Wholesale and retail trade; repair of motor vehicles and motorcycles’ - 9.2 thousand and the highest increase was in ‘Human health and social work activities’- 6.3 thousand and ‘Information and communication’- 6.2 thousand. In percentages the highest decrease at the end of December 2020 as compared to December 2019 was in economic activity ‘Accommodation and food service activities’ - by 24.7%, ‘Arts, entertainment and recreation’ - by 5.5%, and in ‘Other service activities’ and ‘Manufacturing’ - by 4.6%, as the highest increase was reported in ‘Information and communication’ - by 6.5%.

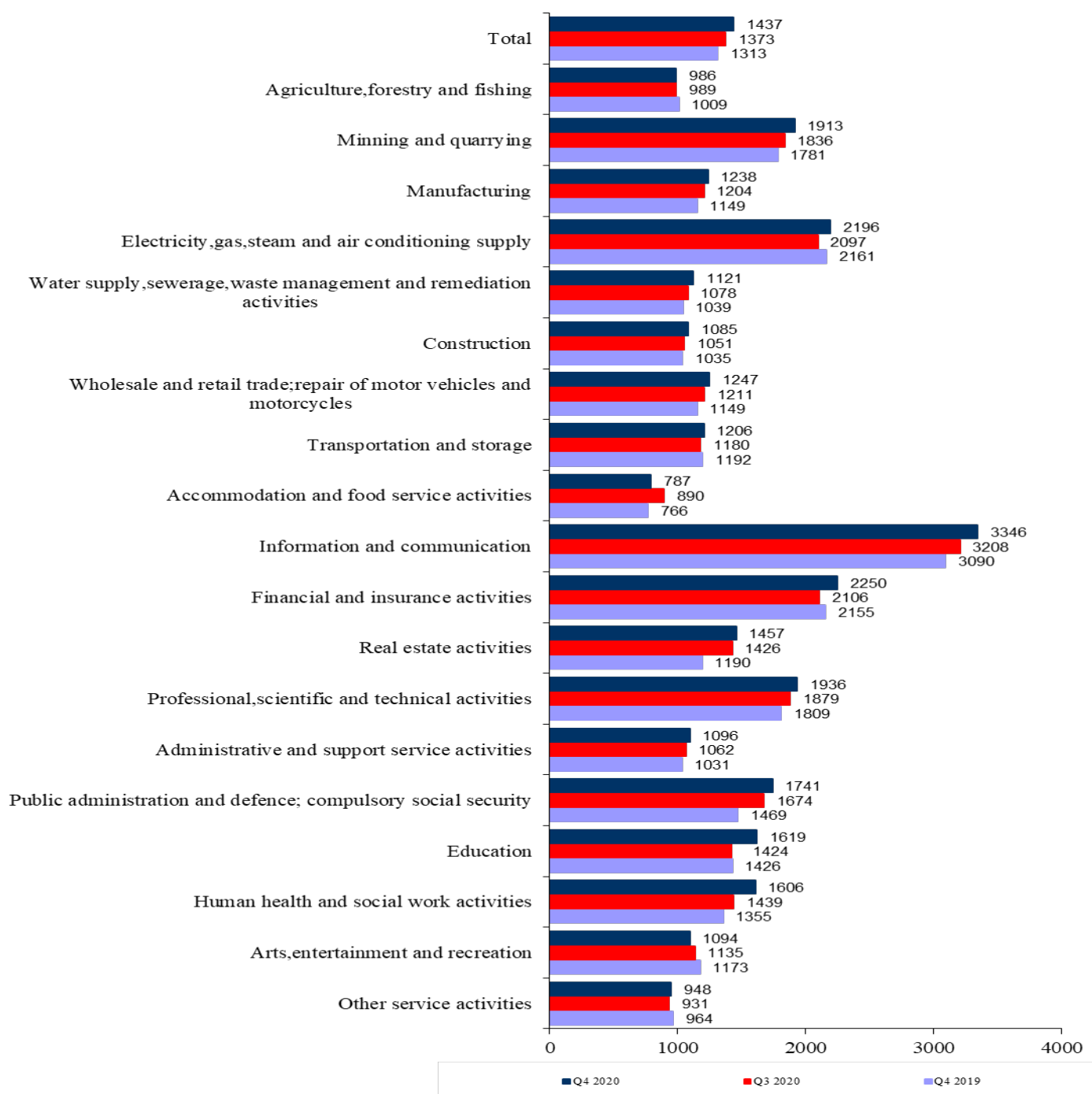
The **average monthly wages and salaries** of the employees under labour contract in October was 1 442 BGN, in November - 1 402 BGN and in December 2020 - 1 468 BGN.

Figure 1. Gross average wages and salaries by months



In the fourth quarter of 2020 in comparison with the third quarter of 2020 the average monthly wages and salaries increased by 4.7% getting 1 437 BGN. The highest increase in wages and salaries was reported in ‘Education’ - by 13.7%, ‘Human health and social work activities’ - by 11.6% and in ‘Financial and insurance activities’- by 6.8%. The highest decrease was in the economic activities ‘Accommodation and food service activities’ - by 11.6%.

Figure 2. Gross average monthly wages and salaries of the employees under labour contract by economic activities (BGN)



Compared to the fourth quarter of 2019 the average monthly wages and salaries in the fourth quarter of 2020 rose by 9.4%. The highest growth rates were recorded in economic activities: ‘Real estate activities’ – by 22.4%, ‘Human health and social work activities’ and ‘Public administration and defence; compulsory social security’ - by 18.5%.

The economic activities with the highest wages and salaries in the fourth quarter of 2020 were:

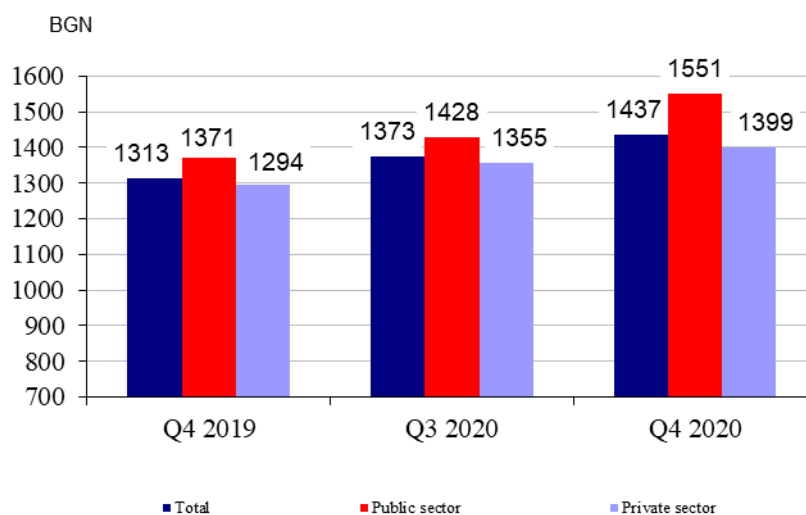
- ‘Information and communication’ - 3 346 BGN
- ‘Financial and insurance activities’ - 2 250 BGN
- ‘Electricity, gas, steam and air conditioning supply’ - 2 196 BGN.

The lowest wages and salaries were recorded in:

- ‘Accommodation and food service activities’ - 787 BGN
- ‘Other service activities’ - 948 BGN
- ‘Agriculture, forestry and fishing’ - 986 BGN.

In comparison with a year earlier the average monthly wages and salaries in public sector grew by 13.1% while in private sector - by 8.1%.

Figure 3. Gross average monthly wages and salaries by kind of ownership



Methodological notes

The source of information is the Quarterly Survey on employees, hours worked, wages and salaries, and other expenditures paid by the employer. It is sample survey which main purpose is to make a study of the current state and dynamics of some main aspects of labour market. The sample used for the survey is a stratified random sample without replacement. Stratification criteria used include: economic activity (NACE rev.2), size of the enterprise (according to the number of employees) and regional breakdown (28 districts, NUTS3).

More methodological information on the quarterly survey and data could be found on the NSI official website:

http://www.nsi.bg/sites/default/files/files/metadata/Labour_Method_1.1_EN.pdf;

<http://www.nsi.bg/en/content/6398/short-term-statistics>

Annex

Table 1

Employees under labour contract at the end of the month by economic activities in 2020¹

(Number)

Economic activities	2020		
	October	November	December
Total	2249905	2245328	2228280
Agriculture, forestry and fishing	69282	67374	65545
Mining and quarrying	20573	20583	20526
Manufacturing	471639	472308	468808
Electricity, gas, steam and air conditioning supply	29566	29542	29487
Water supply, sewerage, waste management and remediation activities	36349	36515	36481
Construction	127373	127797	125736
Wholesale and retail trade; repair of motor vehicles and motorcycles	387284	387745	387193
Transportation and storage	138372	138414	137282
Accommodation and food service activities	85990	81261	78994
Information and communication	102152	102823	102541
Financial and insurance activities	56201	56254	56244
Real estate activities	20981	20667	20500
Professional, scientific and technical activities	80170	79822	79316
Administrative and support service activities	119310	119191	116327
Public administration and defence; compulsory social security	114709	114312	114016
Education	166731	167151	166362
Human health and social work activities	154657	155492	155267
Arts, entertainment and recreation	34045	33722	33507
Other service activities	34521	34355	34148

¹ Preliminary data.

Table 2

Gross average monthly wages and salaries of the employees under labour contract by economic activities in 2020¹

Economic activities	2020 (BGN)		
	October	November	December
Total	1442	1402	1468
Agriculture, forestry and fishing	991	997	969
Mining and quarrying	1867	1814	2059
Manufacturing	1219	1253	1240
Electricity, gas, steam and air conditioning supply	2071	2086	2431
Water supply, sewerage, waste management and remediation activities	1085	1132	1145
Construction	1108	1101	1045
Wholesale and retail trade; repair of motor vehicles and motorcycles	1243	1226	1273
Transportation and storage	1185	1188	1245
Accommodation and food service activities	873	832	643
Information and communication	3287	3248	3502
Financial and insurance activities	2106	2244	2399
Real estate activities	1434	1442	1494
Professional, scientific and technical activities	1894	1908	2007
Administrative and support service activities	1069	1078	1142
Public administration and defence; compulsory social security	2111	1464	1649
Education	1660	1449	1748
Human health and social work activities	1537	1611	1671
Arts, entertainment and recreation	1219	1085	976
Other service activities	939	927	978

¹ Preliminary data.