



## EMPLOYEES UNDER LABOUR CONTRACT AND GROSS AVERAGE WAGES AND SALARIES, SECOND QUARTER OF 2019

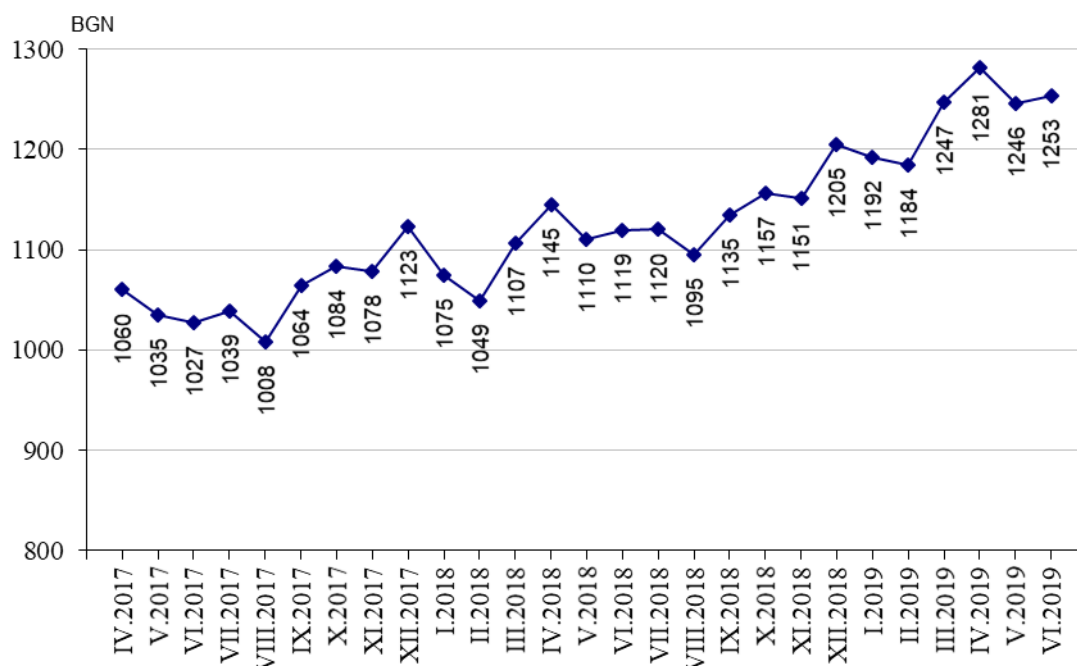
According to the preliminary data of the National Statistical Institute (NSI) at the end of June 2019 the **number of employees** under labour contract increased by 33.9 thousand or 1.5% as compared to the end of March 2019 and reached 2.35 million. The highest increase was observed in economic activities: ‘Accommodation and food service activities’ - 28.4%, ‘Real estate activities’ - 7.9% and in ‘Agriculture, forestry and fishing’ - by 3.6%. The highest decrease of the number of employees was recorded in ‘Education’ - by 2.4%.

In the structure of employees by economic activities the biggest relative share of employees was in ‘Manufacturing’ - 21.3% and ‘Wholesale and retail trade; repair of motor vehicles and motorcycles’ - 17.0%.

At the end of June 2019 as compared to June 2018 the number of employees under labour contract decreased by 3.0 thousand or 0.1%. The highest decrease in absolute figures was observed in economic activities ‘Manufacturing’ - 13.0 thousand, ‘Transportation and storage’ - 2.8 thousand, and ‘Agriculture, forestry and fishing’ - 2.6 thousand and the highest increase - in ‘Information and communication’ - 6.0 thousand. In percentages the highest decrease at the end of June 2019 as compared to June 2018 was in economic activity ‘Mining and quarrying’ - by 5.0% and ‘Other service activities’ - by 4.9%, as the highest increase was reported in ‘Real estate activities’ - by 5.0%.

The **average monthly wages and salaries** of the employees under labour contract in April was 1 281 BGN, in May - 1 246 BGN and in June 2019 - 1 253 BGN.

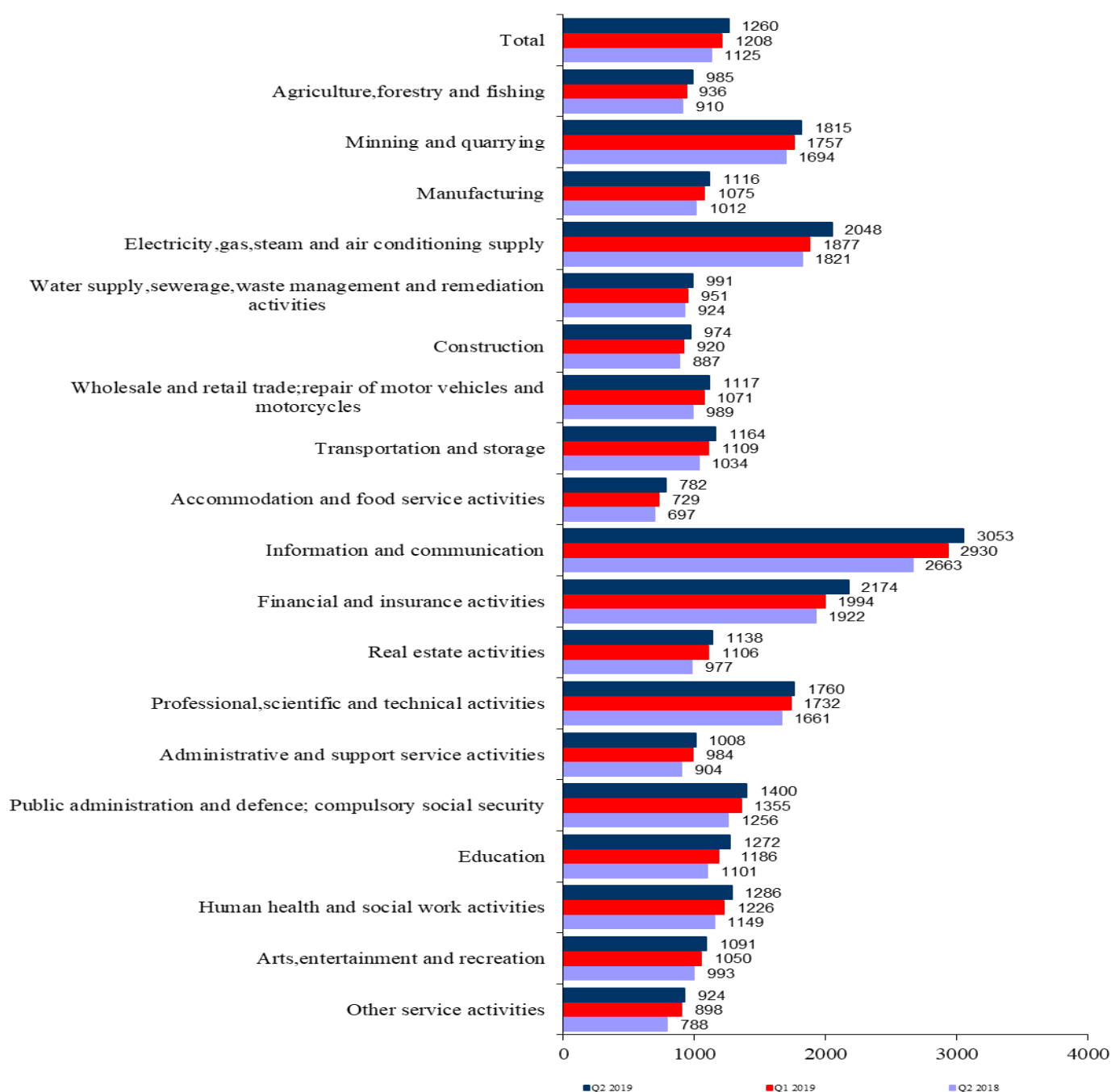
**Figure 1. Gross average wages and salaries by months**





In the second quarter of 2019 in comparison with the first quarter of 2019 the average monthly wages and salaries increased by 4.3% getting 1 260 BGN. The highest increase in wages and salaries was reported in 'Electricity, gas, steam and air conditioning supply' - by 9.1%, and in 'Accommodation and food service activities' and 'Education' - by 7.3%.

**Figure 2. Gross average monthly wages and salaries of the employees under labour contract by economic activities (BGN)**





Compared to the second quarter of 2018 the average monthly wages and salaries in the second quarter of 2019 rose by 12.0%. The highest growth rates were recorded in economic activities: ‘Other service activities’ - 17.3%, ‘Real estate activities’ - 16.5% and ‘Education’ - 15.5%.

The economic activities with the highest wages and salaries in the second quarter of 2019 were:

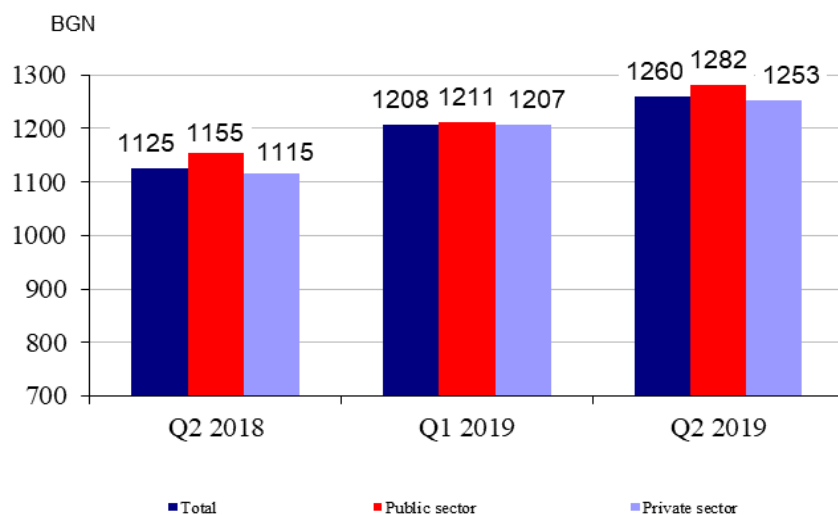
- ‘Information and communication’ - 3 053 BGN
- ‘Financial and insurance activities’ - 2 174 BGN
- ‘Electricity, gas, steam and air conditioning supply’ - 2 048 BGN.

The lowest wages and salaries were recorded in:

- ‘Accommodation and food service activities’ - 782 BGN
- ‘Other service activities’ - 924 BGN
- ‘Construction’ - 974 BGN.

In comparison with a year earlier the average monthly wages and salaries in public sector grew by 11.0% while in private sector - by 12.4%.

**Figure 3. Gross average monthly wages and salaries by kind of ownership**





## Methodological notes

The source of information is the Quarterly Survey on employees, hours worked, wages and salaries, and other expenditures paid by the employer. It is sample survey which main purpose is to make a study of the current state and dynamics of some main aspects of labour market. The sample used for the survey is a stratified random sample without replacement. Stratification criteria used include: economic activity (NACE rev.2), size of the enterprise (according to the number of employees) and regional breakdown (28 districts, NUTS3).

More methodological information on the quarterly survey and data could be found on the NSI official website:

[http://www.nsi.bg/sites/default/files/files/metadata/Labour\\_Method\\_1.1\\_EN.pdf](http://www.nsi.bg/sites/default/files/files/metadata/Labour_Method_1.1_EN.pdf);

<http://www.nsi.bg/en/content/6398/short-term-statistics>.



## Annex

**Table 1**

### Employees under labour contract at the end of the month by economic activities in 2019<sup>1</sup>

(Number)

Economic activities	2019		
	April	May	June
<b>Total</b>	<b>2327300</b>	<b>2338722</b>	<b>2351423</b>
Agriculture, forestry and fishing	72588	73192	73404
Mining and quarrying	20783	20784	20739
Manufacturing	505970	503602	500875
Electricity, gas, steam and air conditioning supply	29852	29775	29872
Water supply, sewerage, waste management and remediation activities	36849	37082	37172
Construction	131011	131538	131454
Wholesale and retail trade; repair of motor vehicles and motorcycles	398344	397986	399254
Transportation and storage	142387	142872	142740
Accommodation and food service activities	116575	127881	139888
Information and communication	93541	93592	94209
Financial and insurance activities	57114	57477	58152
Real estate activities	21181	21957	22920
Professional, scientific and technical activities	80832	81381	81320
Administrative and support service activities	120498	121168	122537
Public administration and defence; compulsory social security	113772	114074	114360
Education	167442	166198	163773
Human health and social work activities	146539	146395	146626
Arts, entertainment and recreation	35516	35375	35771
Other service activities	36506	36393	36357

<sup>1</sup> Preliminary data.



**Table 2**

**Gross average monthly wages and salaries of the employees under labour contract by economic activities in 2019<sup>1</sup>**

Economic activities	(BGN)		
	2019		
	April	May	June
<b>Total</b>	<b>1281</b>	<b>1246</b>	<b>1253</b>
Agriculture, forestry and fishing	966	969	1019
Mining and quarrying	2050	1641	1754
Manufacturing	1122	1111	1116
Electricity, gas, steam and air conditioning supply	2010	2063	2072
Water supply, sewerage, waste management and remediation activities	994	999	979
Construction	960	976	986
Wholesale and retail trade; repair of motor vehicles and motorcycles	1129	1116	1105
Transportation and storage	1158	1163	1171
Accommodation and food service activities	790	791	766
Information and communication	2965	2919	3274
Financial and insurance activities	2444	1986	2096
Real estate activities	1163	1135	1117
Professional, scientific and technical activities	1784	1762	1736
Administrative and support service activities	1015	1012	997
Public administration and defence; compulsory social security	1621	1290	1288
Education	1255	1332	1229
Human health and social work activities	1298	1279	1282
Arts, entertainment and recreation	1123	1094	1056
Other service activities	929	916	927

<sup>1</sup> Preliminary data.