



## EMPLOYEES UNDER LABOUR CONTRACT AND GROSS AVERAGE WAGES AND SALARIES, FIRST QUARTER OF 2017

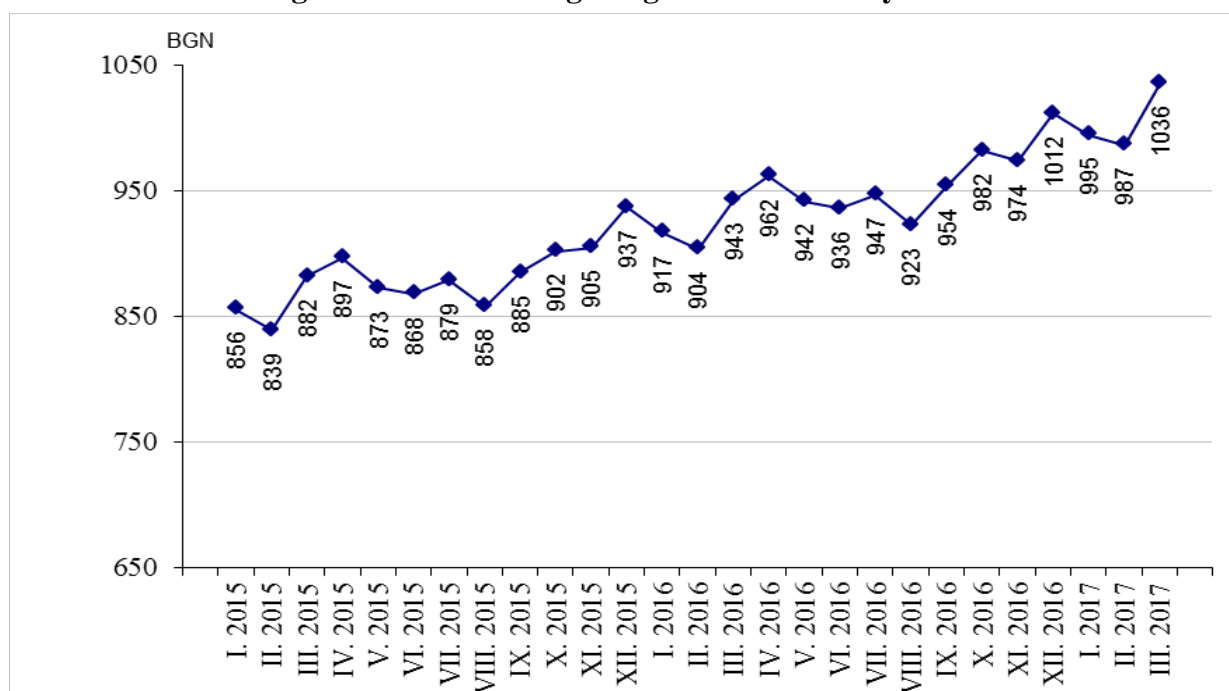
According to the preliminary data of the National Statistical Institute (NSI) at the end of March 2017 the **number of employees** under labour contract increased by 6.2 thousand or 0.3% as compared to the end of December 2016 and reached 2.28 million. The highest increase was observed in economic activities: 'Mining and quarrying' - 5.2% and 'Agriculture, forestry and fishing' - 2.6%. The highest decrease of the number of employees was recorded in 'Accommodation and food service activities' - by 2.7%.

In the structure of employees by economic activities the biggest relative share of employees was in 'Manufacturing' - 22.5% and 'Wholesale and retail trade; repair of motor vehicles and motorcycles' - 17.3%.

At the end of March 2017 as compared to March 2016 the number of employees under labour contract decreased by 2.8 thousand or 0.1%. The highest decrease in absolute figures was observed in economic activities 'Agriculture, forestry and fishing' - 7.9 thousand, 'Construction' - 3.0 thousand and 'Administrative and support service activities' - 2.6 thousand. In percentages the highest decrease was also in 'Agriculture, forestry and fishing' - by 10.3% and 'Construction' - by 2.5%. The highest increase at the end of March 2017 as compared to March 2016 was registered in economic activity 'Information and communication' - in absolute figures by 4.5 thousand and in percentages - by 5.6%.

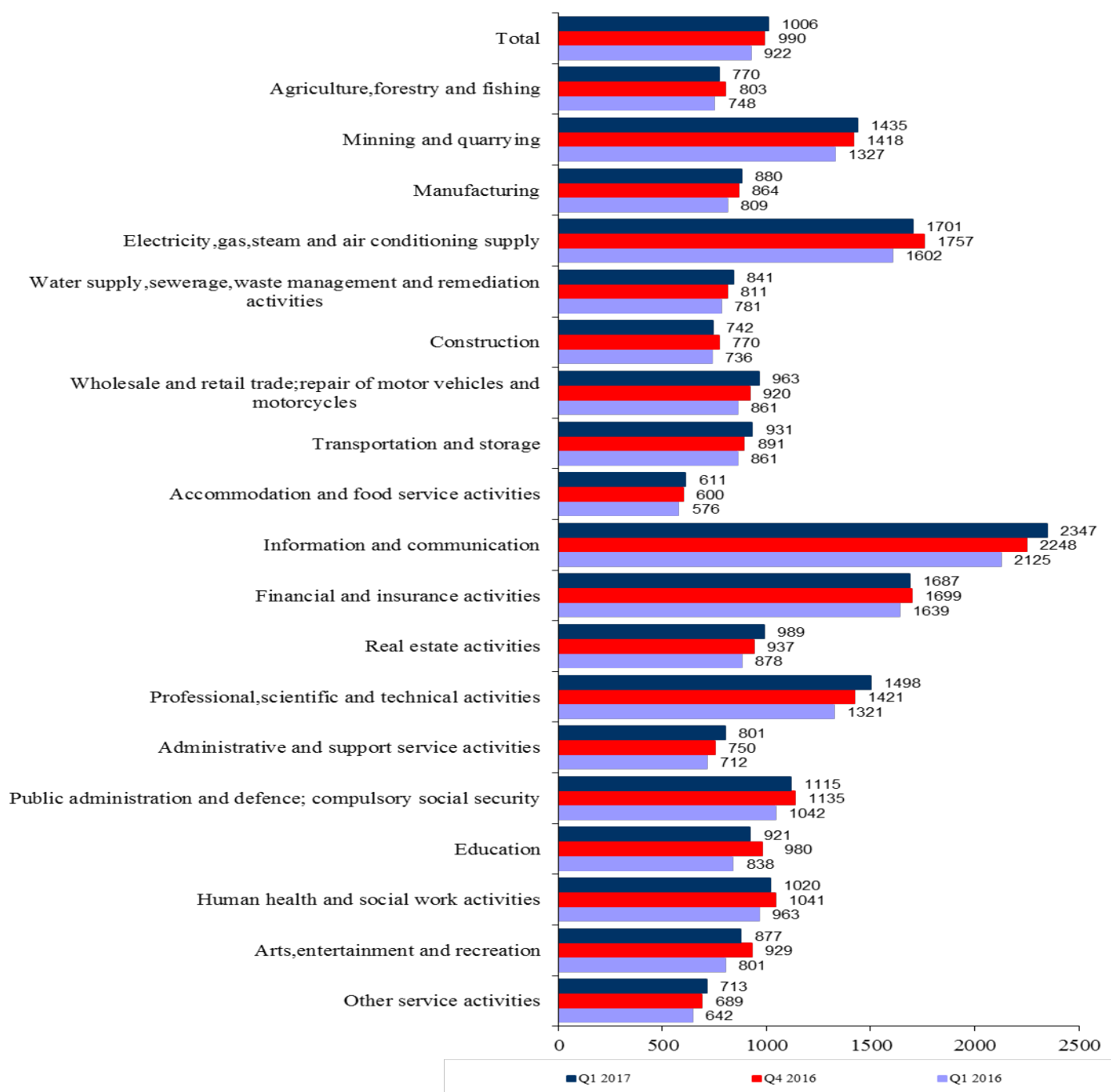
The **average monthly wages and salaries** of the employees under labour contract in January was 995 BGN, in February - 987 BGN and in March 2017 - 1 036 BGN.

**Figure 1. Gross average wages and salaries by months**



In the first quarter of 2017 in comparison with the fourth quarter of 2016 the average monthly wages and salaries increased by 1.6% getting 1 006 BGN. The highest increase in wages and salaries was reported in 'Administrative and support service activities' - by 6.8%, 'Real estate activities' - by 5.5%, and 'Wholesale and retail trade; repair of motor vehicles and motorcycles' - by 4.7%.

**Figure 2. Gross average monthly wages and salaries of the employees under labour contract by economic activities (BGN)**





Compared to the first quarter of 2016 the average monthly wages and salaries in the first quarter of 2017 rose by 9.1%. The highest growth rates were recorded in economic activities: ‘Professional, scientific and technical activities’ - 13.4%, ‘Real estate activities’ - 12.6%, and ‘Administrative and support service activities’ - 12.5%.

The economic activities with the highest wages and salaries in the first quarter of 2017 were:

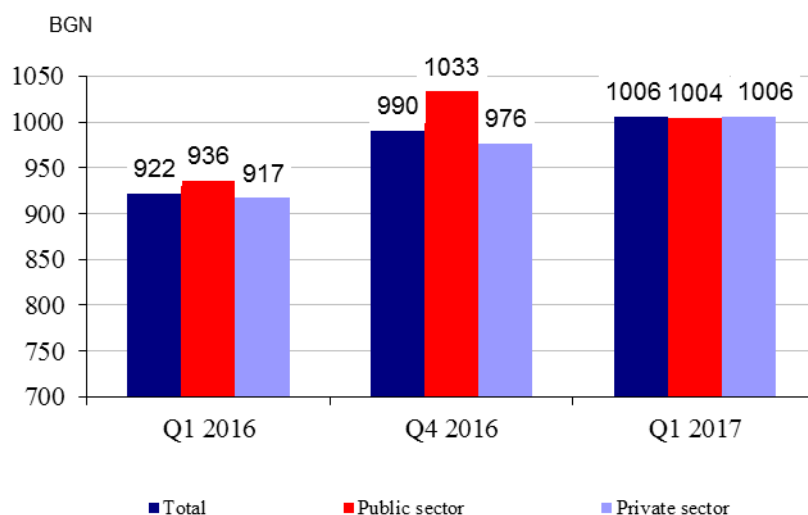
- ‘Information and communication’ - 2 347 BGN
- ‘Electricity, gas, steam and air conditioning supply’ - 1 701 BGN
- ‘Financial and insurance activities’ - 1 687 BGN.

The lowest wages and salaries were recorded in:

- ‘Accommodation and food service activities’ - 611 BGN
- ‘Other services activities’ - 713 BGN
- ‘Construction’ - 742 BGN.

In comparison with a year earlier the average monthly wages and salaries in public sector grew by 7.3% while in private sector - by 9.7%.

**Figure 3. Gross average monthly wages and salaries by kind of ownership**





### **Methodological notes**

The source of information is the Quarterly Survey on employees, hours worked, wages and salaries, and other expenditures paid by the employer. It is sample survey which main purpose is to make a study of the current state and dynamics of some main aspects of labour market. The sample used for the survey is a stratified random sample without replacement. Stratification criteria used include: economic activity (NACE rev.2), size of the enterprise (according to the number of employees) and regional breakdown (28 districts, NUTS3).

More methodological information on the quarterly survey and data could be found on the NSI official website:

[http://www.nsi.bg/sites/default/files/files/metadata/Labour\\_Method\\_1.1\\_EN.pdf](http://www.nsi.bg/sites/default/files/files/metadata/Labour_Method_1.1_EN.pdf)

<http://www.nsi.bg/en/content/6398/short-term-statistics>



## Annex

**Table 1**

**Employees under labour contract at the end of the month by economic activities in 2017<sup>1</sup>**

(Number)

Economic activities	2017		
	January	February	March
<b>Total</b>	<b>2274620</b>	<b>2274601</b>	<b>2277323</b>
Agriculture, forestry and fishing	65763	65865	68941
Mining and quarrying	22411	22449	22434
Manufacturing	512868	512537	512211
Electricity, gas, steam and air conditioning supply	29612	29668	29719
Water supply, sewerage, waste management and remediation activities	35752	35782	35895
Construction	116522	116513	117119
Wholesale and retail trade; repair of motor vehicles and motorcycles	393417	392771	393474
Transportation and storage	139602	140029	139846
Accommodation and food service activities	103105	102898	101497
Information and communication	84340	84478	84511
Financial and insurance activities	57529	57442	57328
Real estate activities	22174	22292	22405
Professional, scientific and technical activities	81474	81326	81430
Administrative and support service activities	116930	116802	116627
Public administration and defence; compulsory social security	110578	110913	111392
Education	168538	168995	169089
Human health and social work activities	142208	142011	141726
Arts, entertainment and recreation	34551	34440	34539
Other service activities	37246	37390	37140

<sup>1</sup> Preliminary data.



**Table 2**

**Gross average monthly wages and salaries of the employees under labour contract by economic activities in 2017<sup>1</sup>**

Economic activities	(BGN)		
	2017		
	January	February	March
<b>Total</b>	<b>995</b>	<b>987</b>	<b>1036</b>
Agriculture, forestry and fishing	737	751	820
Mining and quarrying	1350	1345	1611
Manufacturing	857	870	913
Electricity, gas, steam and air conditioning supply	1783	1597	1723
Water supply, sewerage, waste management and remediation activities	830	830	863
Construction	693	746	786
Wholesale and retail trade; repair of motor vehicles and motorcycles	947	950	991
Transportation and storage	933	912	947
Accommodation and food service activities	613	603	619
Information and communication	2372	2253	2418
Financial and insurance activities	1643	1664	1752
Real estate activities	931	974	1062
Professional, scientific and technical activities	1446	1501	1548
Administrative and support service activities	799	779	825
Public administration and defence; compulsory social security	1271	1024	1050
Education	877	926	960
Human health and social work activities	998	1009	1052
Arts, entertainment and recreation	881	857	893
Other service activities	704	706	729

<sup>1</sup> Preliminary data.