

EMPLOYEES UNDER LABOUR CONTRACT AND GROSS AVERAGE WAGES AND SALARIES, SECOND QUARTER OF 2016

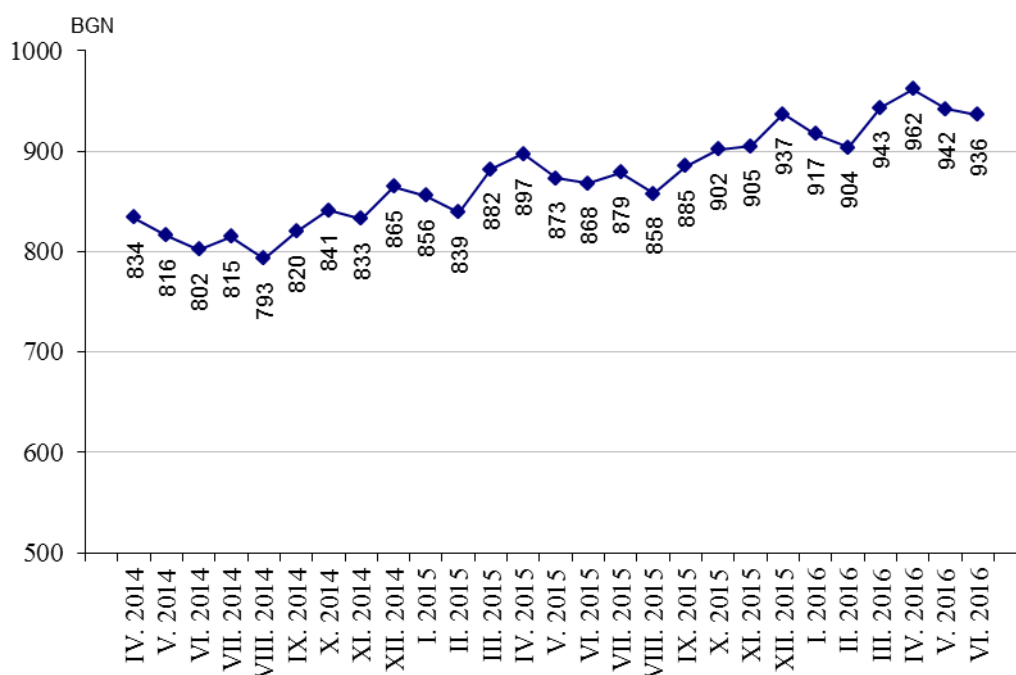
According to the preliminary data of the National Statistical Institute (NSI) at the end of June 2016 the **number of employees** under labour contract increased by 76.5 thousand or 3.4% as compared to the end of March 2016 and reached 2.36 million. The highest increase was observed in seasonal economic activities: 'Accommodation and food service activities' - 50.1%, 'Agriculture, forestry and fishing' - 8.9% and 'Other services activities' - 5.7%. The highest decrease of the number of employees by 2.9% was recorded in 'Education'.

In the structure of employees by economic activities the biggest relative share of employees was in 'Manufacturing' - 21.6% and 'Wholesale and retail trade; repair of motor vehicles and motorcycles' - 16.9%.

At the end of June 2016 as compared to June 2015 the number of employees under labour contract increased by 46.1 thousand or 2.0%. The highest increase in absolute figures was observed in economic activities 'Manufacturing' - 10.9 thousand, 'Administrative and support service activities' - 9.2 thousand and 'Wholesale and retail trade; repair of motor vehicles and motorcycles' - 8.4 thousand. In percentages the highest increase was in 'Other services activities' - 8.1%, 'Administrative and support service activities' - by 8.0% and 'Agriculture, forestry and fishing' - by 7.4%. The highest decrease at the end of June 2016 as compared to June 2015 was registered in economic activity 'Construction' - in absolute figures by 8.0 thousand and in percentages - by 6.2%.

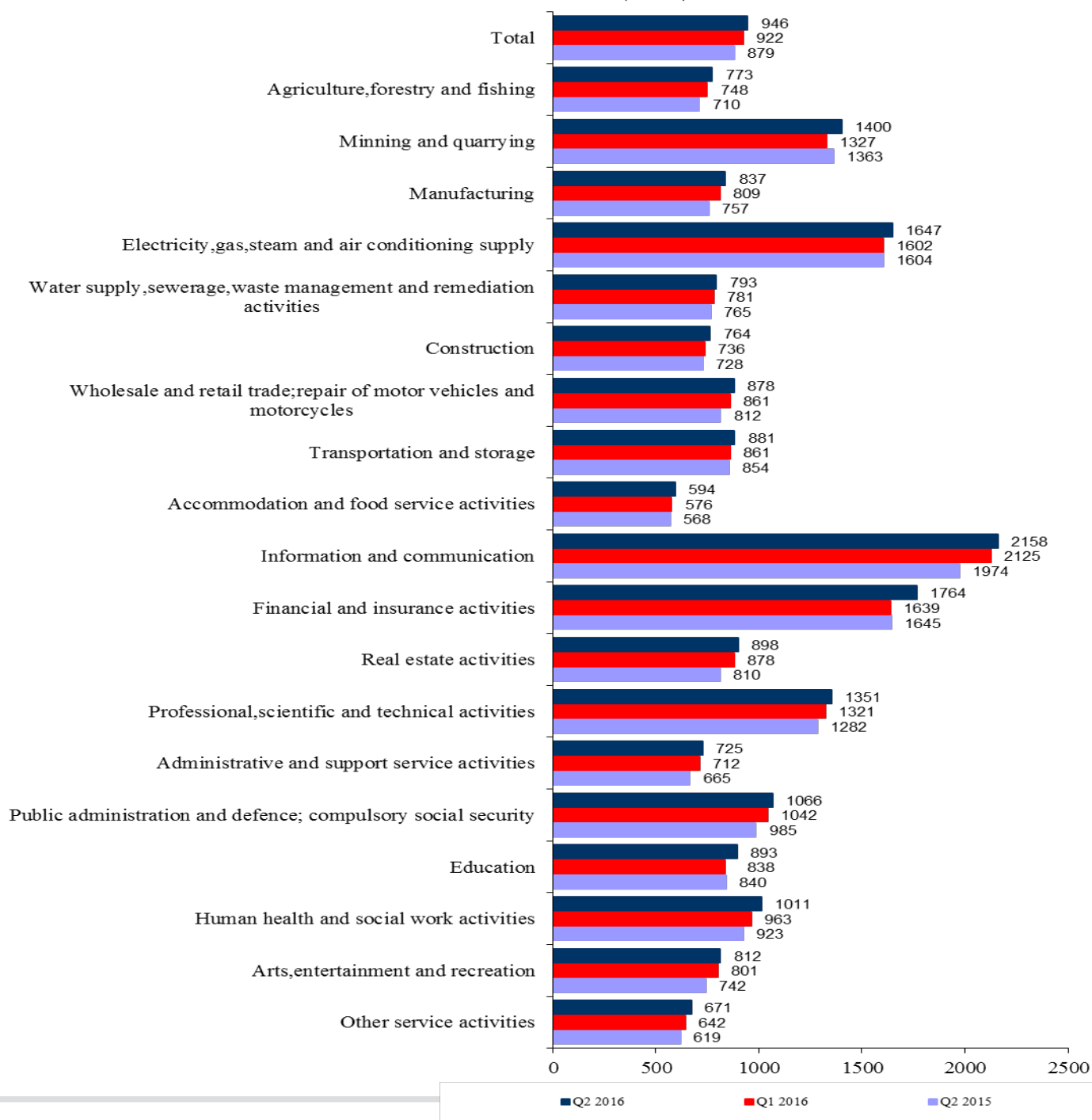
The **average monthly wages and salaries** of the employees under labour contract in April was 962 BGN, in May - 942 BGN and in June 2016 - 936 BGN.

Figure 1. Gross average wages and salaries by months



In the second quarter of 2016 in comparison with the first quarter of 2016 the average monthly wages and salaries increased by 2.6% getting 946 BGN. The highest increase in wages and salaries was reported in 'Financial and insurance activities' - by 7.6%, 'Education' - by 6.6%, and 'Mining and quarrying' - by 5.5%.

Figure 2. Gross average monthly wages and salaries of the employees under labour contract by economic activities (BGN)





Compared to the second quarter of 2015 the average monthly wages and salaries in the second quarter of 2016 rose by 7.6%. The highest growth rates were recorded in economic activities: 'Real estate activities' - by 10.9%, 'Manufacturing' - by 10.6%, and 'Human health and social work activities' - by 9.5%.

The economic activities with the highest wages and salaries in the second quarter of 2016 were:

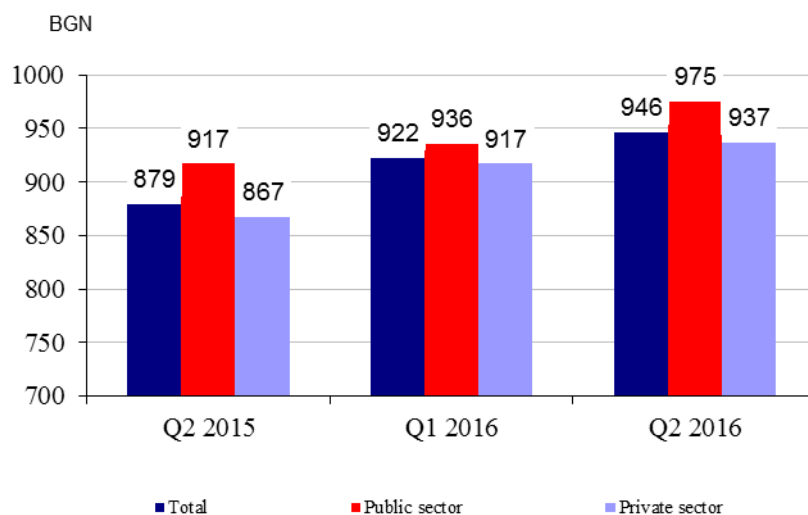
- 'Information and communication' - 2 158 BGN
- 'Financial and insurance activities' - 1 764 BGN
- 'Electricity, gas, steam and air conditioning supply' - 1 647 BGN.

The lowest wages and salaries were recorded in:

- 'Accommodation and food service activities' - 594 BGN
- 'Other services activities' - 671 BGN
- 'Administrative and support service activities' - 725 BGN.

In comparison with a year earlier the average monthly wages and salaries in public sector grew by 6.3% while in private sector - by 8.1%.

Figure 3. Gross average monthly wages and salaries by kind of ownership





Methodological notes

The source of information is the Quarterly Survey on employees, hours worked, wages and salaries, and other expenditures paid by the employer. It is sample survey which main purpose is to make a study of the current state and dynamics of some main aspects of labour market. The sample used for the survey is a stratified random sample without replacement. Stratification criteria used include: economic activity (NACE rev. 2), size of the enterprise (according to the number of employees) and regional breakdown (28 districts, NUTS3).

More methodological information on the quarterly survey and data could be found on the NSI official website:

http://www.nsi.bg/sites/default/files/files/metadata/Labour_Method_1.1_EN.pdf

<http://www.nsi.bg/en/content/6398/short-term-statistics> .



Annex

Table 1

Employees under labour contract at the end of the month by economic activities in 2016¹

(Number)

Economic activities	2016		
	April	May	June
Total	2306165	2329540	2356590
Agriculture, forestry and fishing	80684	84722	83679
Mining and quarrying	22684	22625	22579
Manufacturing	509099	507044	508800
Electricity, gas, steam and air conditioning supply	30205	30164	30186
Water supply, sewerage, waste management and remediation activities	35182	35288	35368
Construction	121235	122349	122228
Wholesale and retail trade; repair of motor vehicles and motorcycles	394959	395523	398864
Transportation and storage	138949	140022	141440
Accommodation and food service activities	118928	136538	155338
Information and communication	80382	80533	80807
Financial and insurance activities	57775	57504	57827
Real estate activities	22041	22013	22353
Professional, scientific and technical activities	78834	78826	78950
Administrative and support service activities	120488	120984	123540
Public administration and defence; compulsory social security	112952	113001	113100
Education	170840	169461	166152
Human health and social work activities	139875	140728	141147
Arts, entertainment and recreation	33608	34169	35465
Other service activities	37445	38046	38767

¹ Preliminary data.



Table 2

Gross average monthly wages and salaries of the employees under labour contract by economic activities in 2016¹

Economic activities	(BGN)		
	2016		
	April	May	June
Total	962	942	936
Agriculture, forestry and fishing	760	736	823
Mining and quarrying	1336	1345	1519
Manufacturing	836	834	842
Electricity, gas, steam and air conditioning supply	1633	1667	1640
Water supply, sewerage, waste management and remediation activities	792	796	790
Construction	766	754	773
Wholesale and retail trade; repair of motor vehicles and motorcycles	881	879	874
Transportation and storage	876	890	878
Accommodation and food service activities	596	613	575
Information and communication	2185	2117	2173
Financial and insurance activities	1979	1627	1686
Real estate activities	914	897	883
Professional, scientific and technical activities	1342	1353	1357
Administrative and support service activities	720	737	717
Public administration and defence; compulsory social security	1228	985	985
Education	881	941	856
Human health and social work activities	1014	1021	998
Arts, entertainment and recreation	839	825	775
Other service activities	689	667	658

¹ Preliminary data.