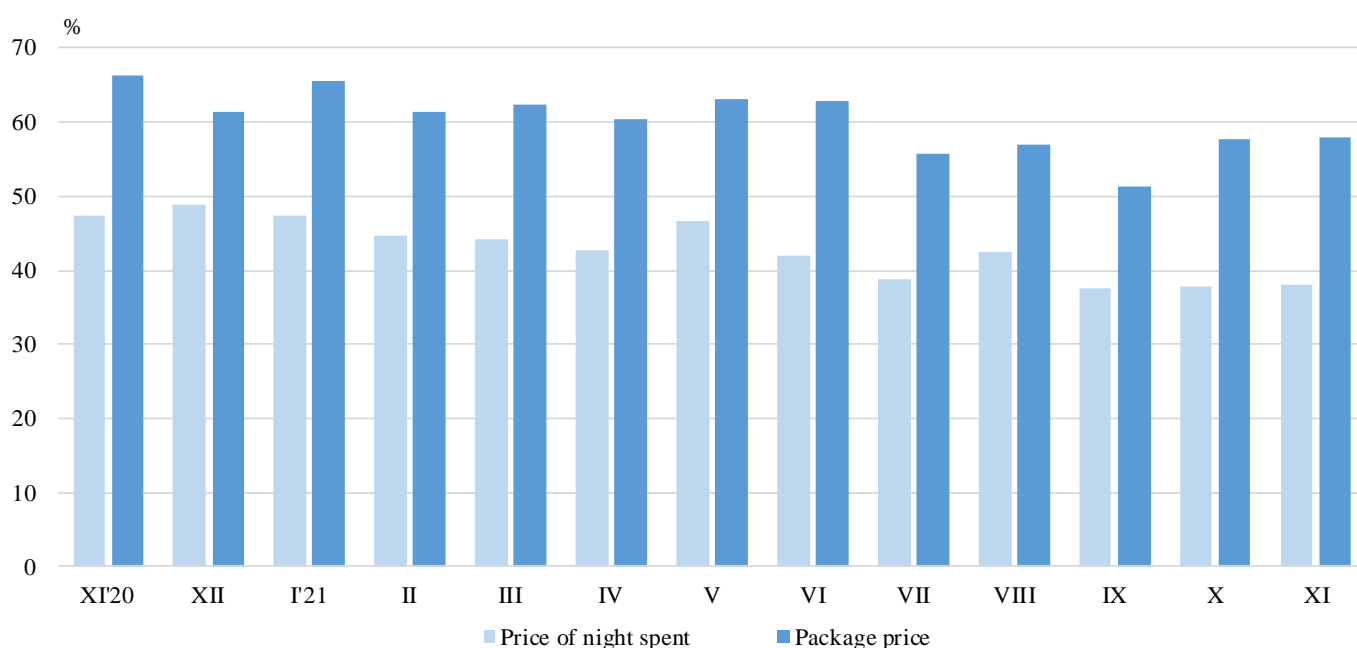


ACTIVITY AND CONDITION OF ACCOMMODATION ESTABLISHMENTS¹ DURING THE STATE OF EMERGENCY IN NOVEMBER 2021

The National Statistical Institute conducts monthly short survey among the managers of accommodation establishments to gather accurate and timely information on the state and development of their businesses during the ensuing epidemic situation in the country.

In November, 53.9% of the respondents offered their clients an alternative period to use their reservations, 58.0% had intended to reduce the price of the package services, and 38.1% - price of the nights spent.

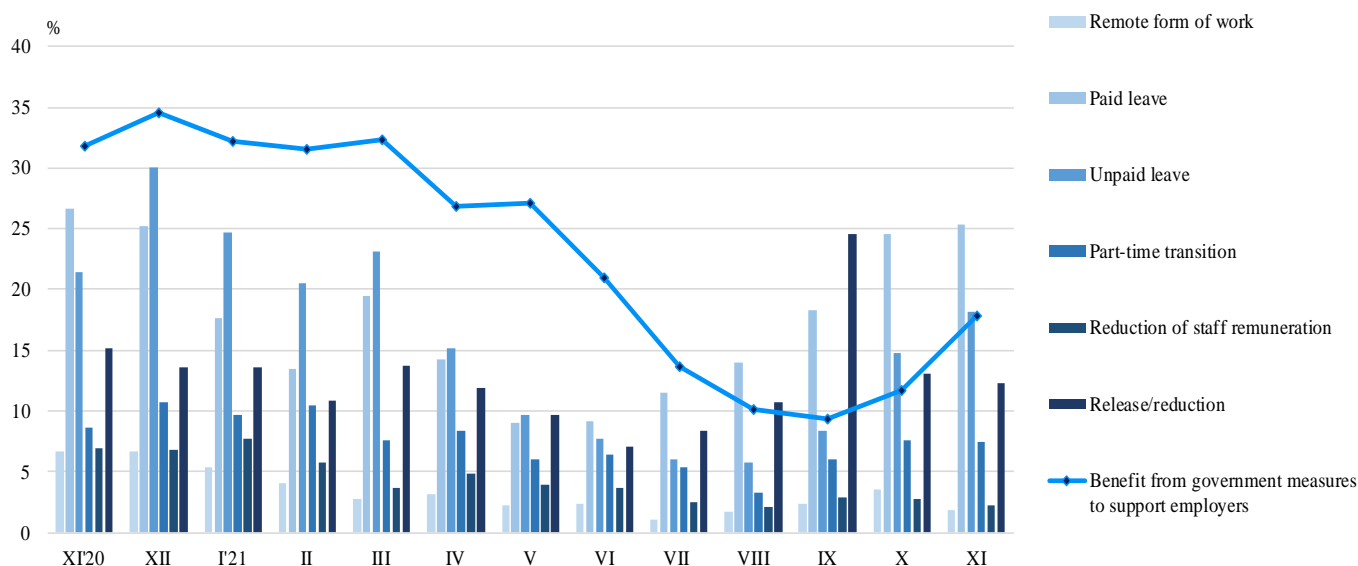
Figure 1. Price reduction of night spent or package services by months



With regard to the employees, 25.4% of the managers took as a measure 'paid leave', 18.2% - 'unpaid leave' and 12.3% - 'release/reduction'. 7.5% of the managers benefited from 'part-time work', 2.2% took the measure 'reduction of staff remuneration', and 1.8% - 'remote form of work'. At the same time, 17.8 of the accommodation establishments have benefited from the government measures to support employers (Figure 2).

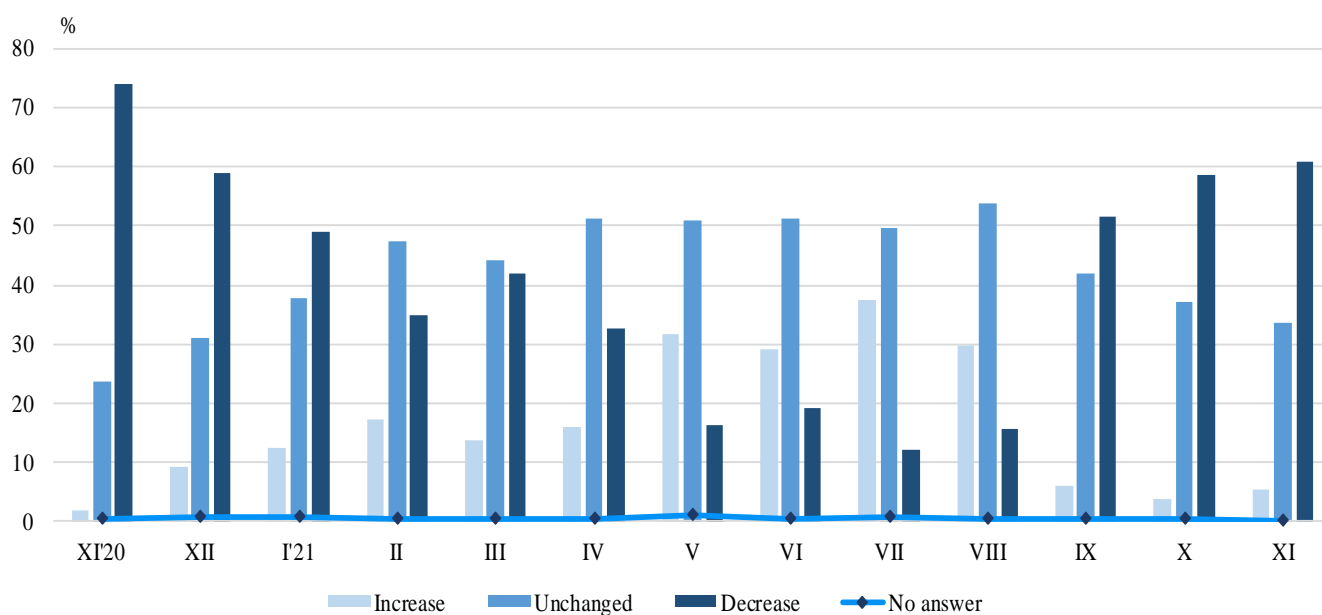
¹ Function during November 2021.

Figure 2. Actions taken towards the available staff by months



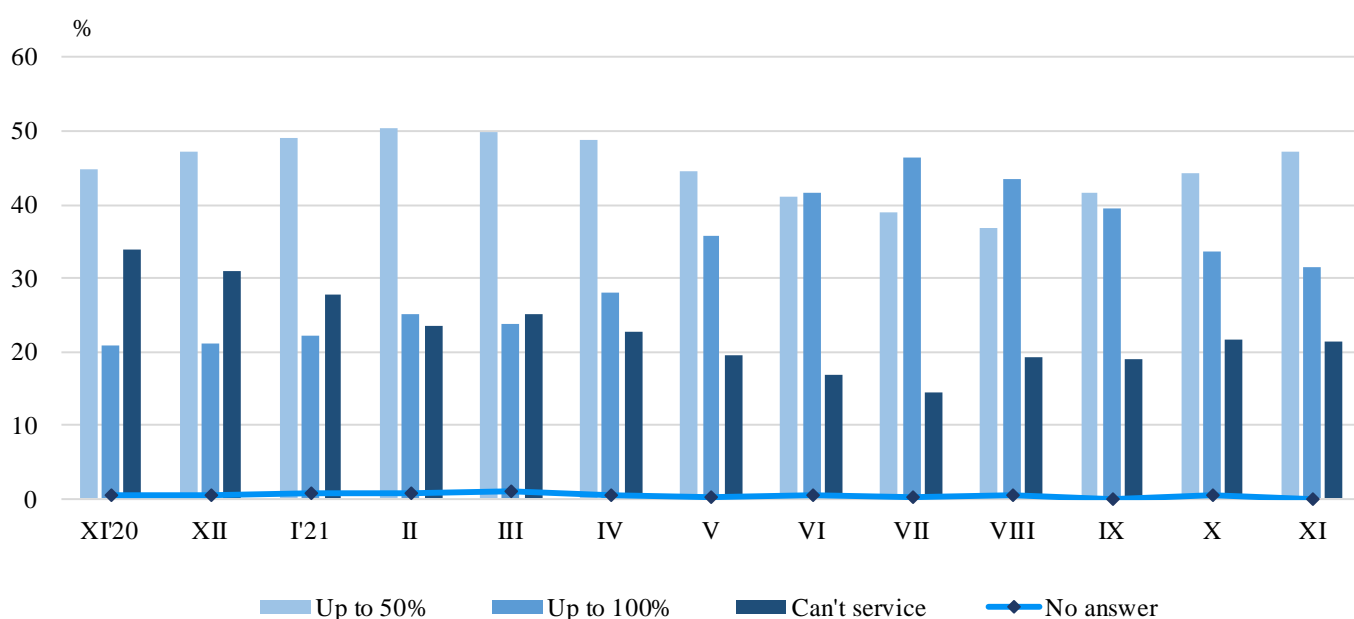
A decrease of revenues from their activity in November compared to the previous month was reported by 61.0% of the surveyed managers, while at 33.5% there was no change.

Figure 3. Change of revenues of the activity as a result the state of emergency and the ensuing epidemic situation by months



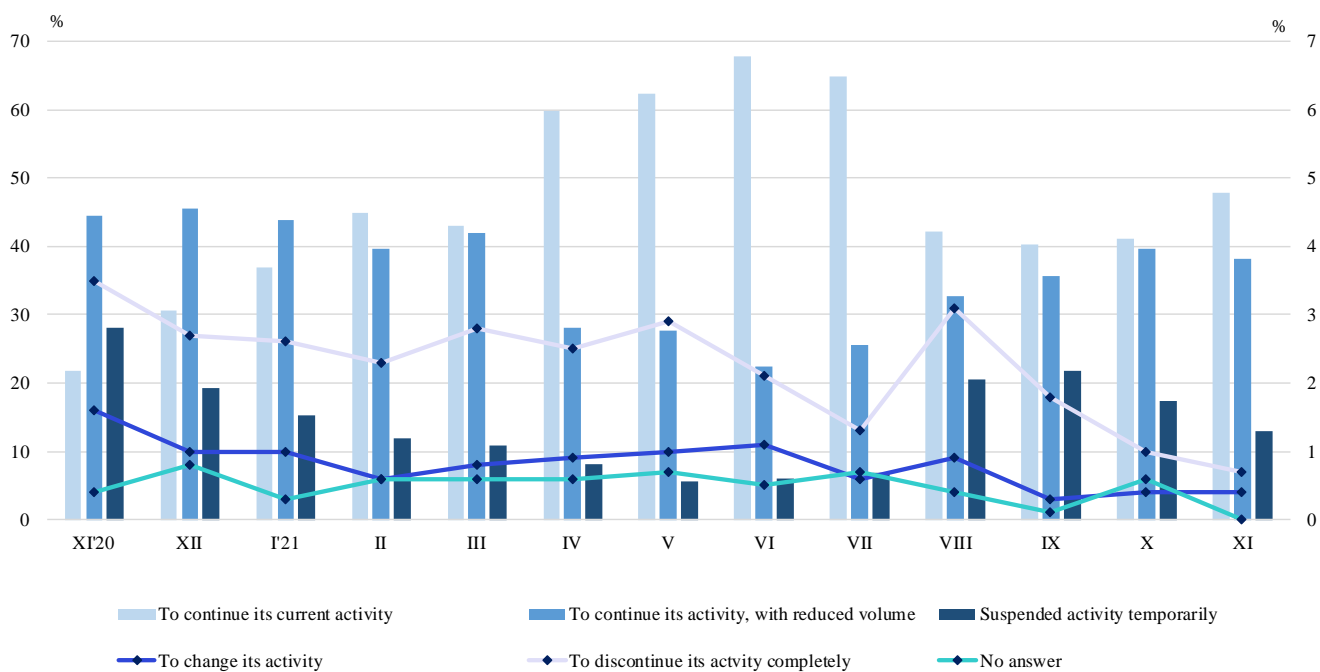
In the next one month 47.1% of the managers predict that they will be able to serve 'Up to 50%' of the expenditures of own account activity, 31.6% - that they will succeed 'Up to 100%', and 21.3% of respondents indicate that they will not be able to handle them on their own.

Figure 4. Opportunity to serve the cost of the activity with your own funds in short term (one month) by month



As regards their future activity in the short term, 47.8% of the managers plan to continue their current activity, 38.2% - to continue with their activities, with reduced volume, 12.9% foresee to suspend activity temporary, and 0.7% predict to discontinue it (Figure 5).

Figure 5. Expectations for the future of the accommodation establishment in short term (one month) by months



Methodological notes

In the period from 3 to 21 December, the National Statistical Institute has conducted a short business survey of Accommodation Establishments. The purpose of the study is to provide to the society information of the impact in state of emergency and the ensuing epidemic situation related to COVID-19, on the most affected sectors of the economy in the country.

In the survey of accommodation establishments are included 1 568 categorized hotels, campsites and other short-term accommodation (villas and tourist settlements, hostels, guest houses, bungalows, holiday homes, chalets, private lodgings and apartments and other short-term accommodation establishments) with more than 10 beds functioned during November 2021. The participation in the survey is voluntary.