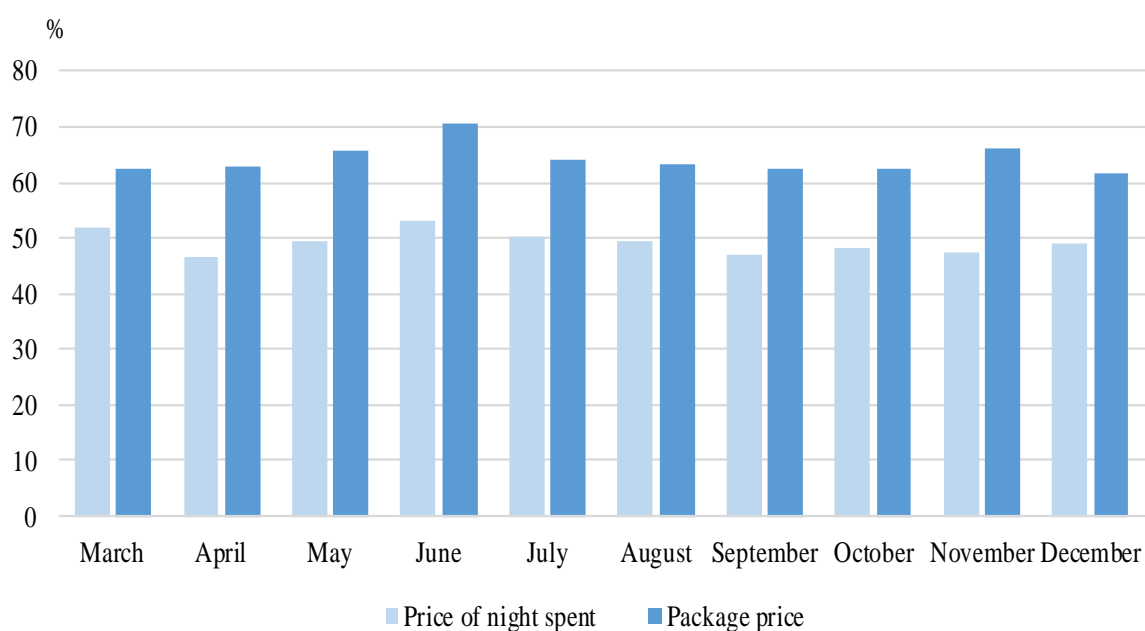


ACTIVITY AND CONDITION OF ACCOMMODATION ESTABLISHMENTS¹ DURING THE STATE OF EMERGENCY IN DECEMBER 2020

The National Statistical Institute conducts monthly short survey among the managers of accommodation establishments to gather accurate and timely information on the state and development of their businesses during the ensuing epidemic situation in the country.

In December, 52.6% of the respondents consider offering their clients an alternative period to use the reservations, 61.4% intend to reduce the price of the package services and 48.9% - of the nights spent.

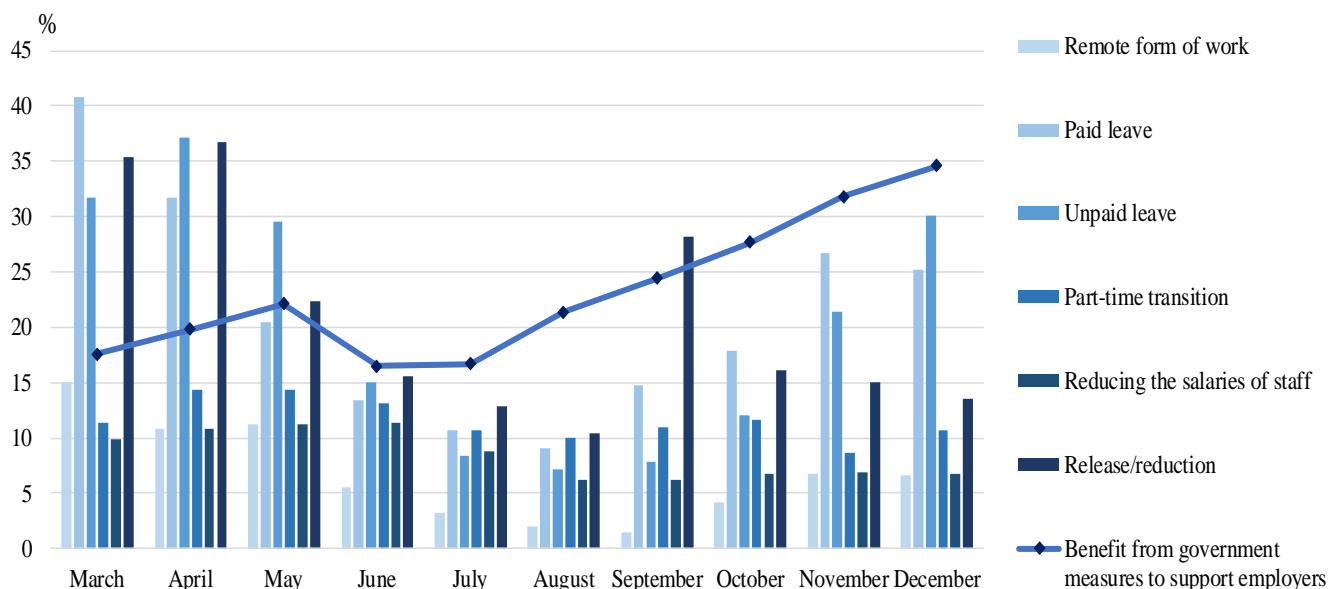
Figure 1. Price reduction of night spent or package services by months



With regard to the employees, 30.1% of the managers took as a measure ‘unpaid leave’, followed by ‘paid leave’ - 25.2%, and ‘release/reduction’ - 13.6%. 10.7% of managers benefited from ‘part-time transition’, as their opinions related to ‘reducing the salaries of staff’ and ‘remote form of work’ are preserved compared to the previous month. At the same time, the accommodation establishments that have benefited from government measures to support employers continue to increase and reach 34.6%. (Fig. 2).

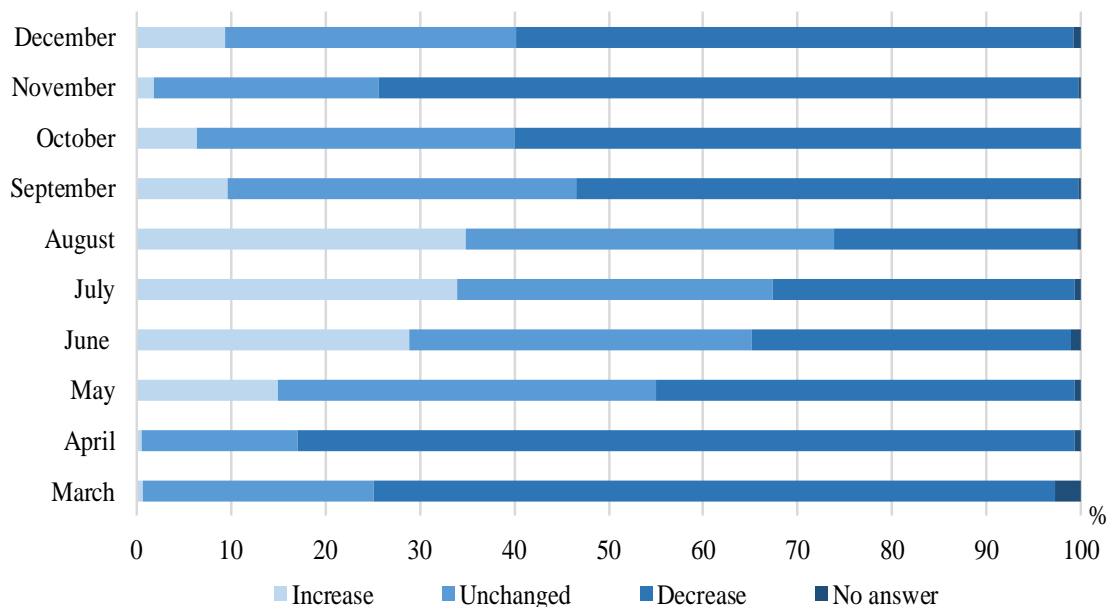
¹ Function during December 2020.

Figure 2. Actions taken against the available staff by months



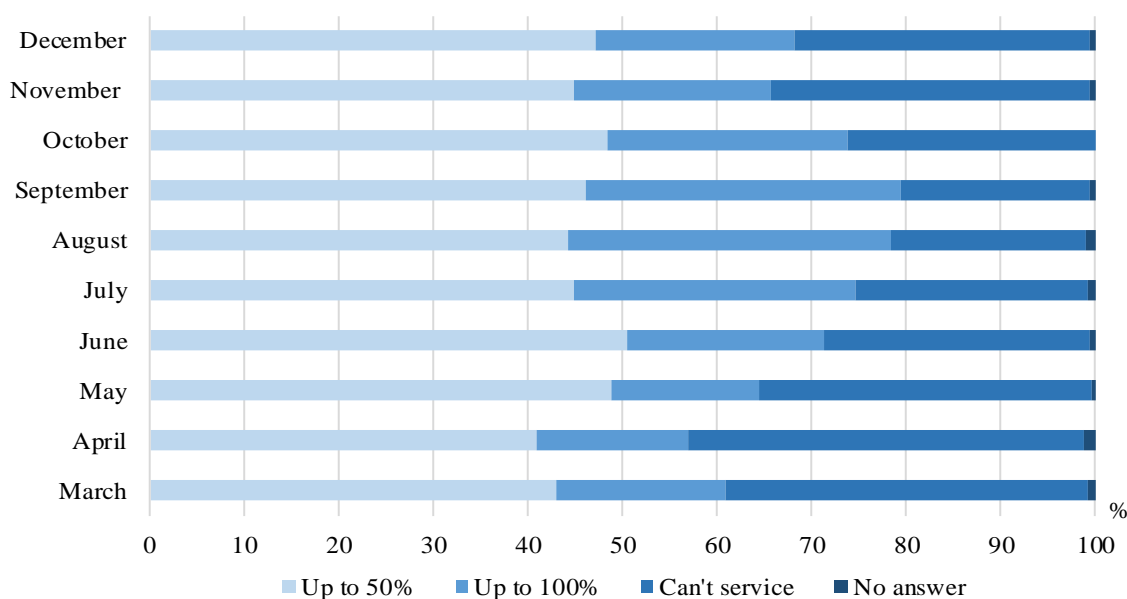
In December 59.0% of the managers report a decrease of revenues from their activity compared to the previous month, while 30.9% indicated that there was no change (Fig. 3).

Figure 3. Change of revenues of the activity as a result the state of emergency and the ensuing epidemic situation by months



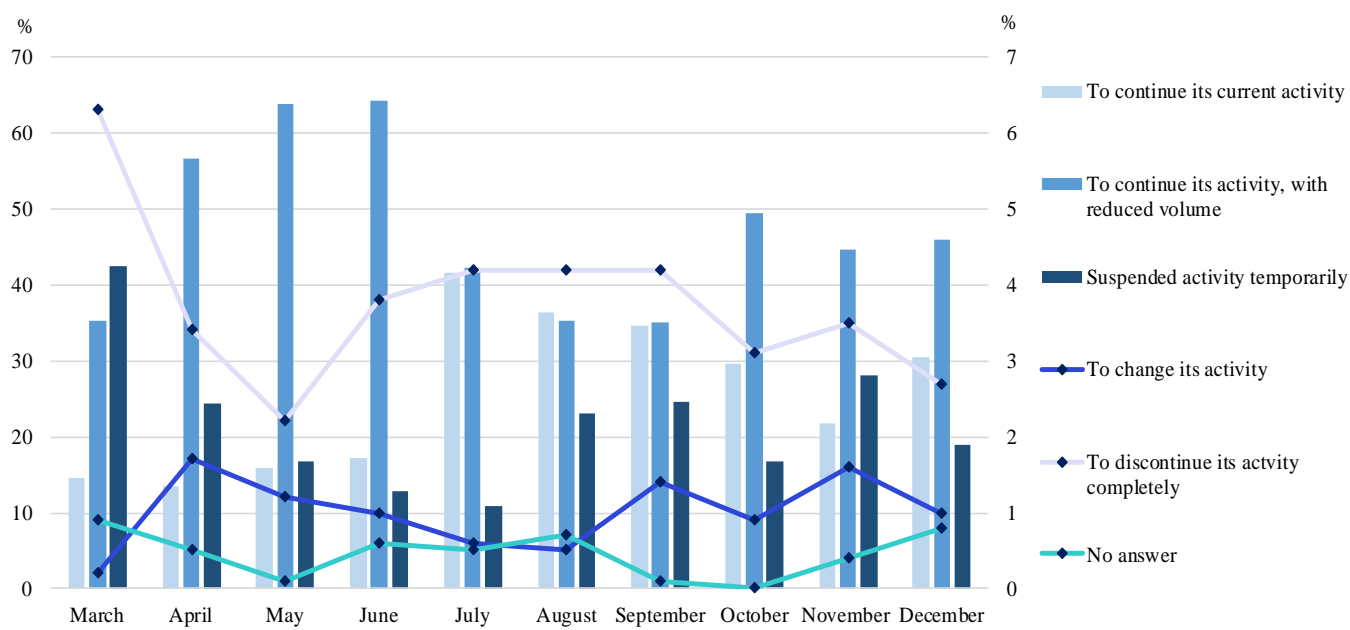
In short term (over the next one month), 47.2% of the managers predict that they will be able to serve ‘Up to 50%’ of the expenditures of own account activity, 31.1% of respondents indicate that they will not be able to handle by themselves, and 21.2% of them expect that they will succeed ‘Up to 100%’.

Figure 4. Opportunity to serve the cost of the activity with your own funds in short term (one month) by month



As regards their future activity in the short term in December, 45.6% of the managers plan to continue with their activities, with reduced volume, 30.7% of them expect to continue their current activity, 19.2% foresee to suspended activity temporarily, and 2.7 % predict to discontinue it.

Figure 5. Expectations for the future of the accommodation establishment in short term (one month) by months



Methodological notes

In the period from 4 to 25 January, the National Statistical Institute has conducted a short business survey of Accommodation Establishments. The purpose of the study is to provide to the society information of the impact in state of emergency and the ensuing epidemic situation related to COVID-19, on the most affected sectors of the economy in the country.

The survey accommodation establishments are included 1 915 categorized hotels, campsites and other short-term accommodation (villas and tourist settlements, hostels, guest houses, bungalows, holiday homes, chalets, private lodgings and apartments and other short-term accommodation establishments) with more than 10 beds functioned during December 2020. The participation in the survey is voluntary.