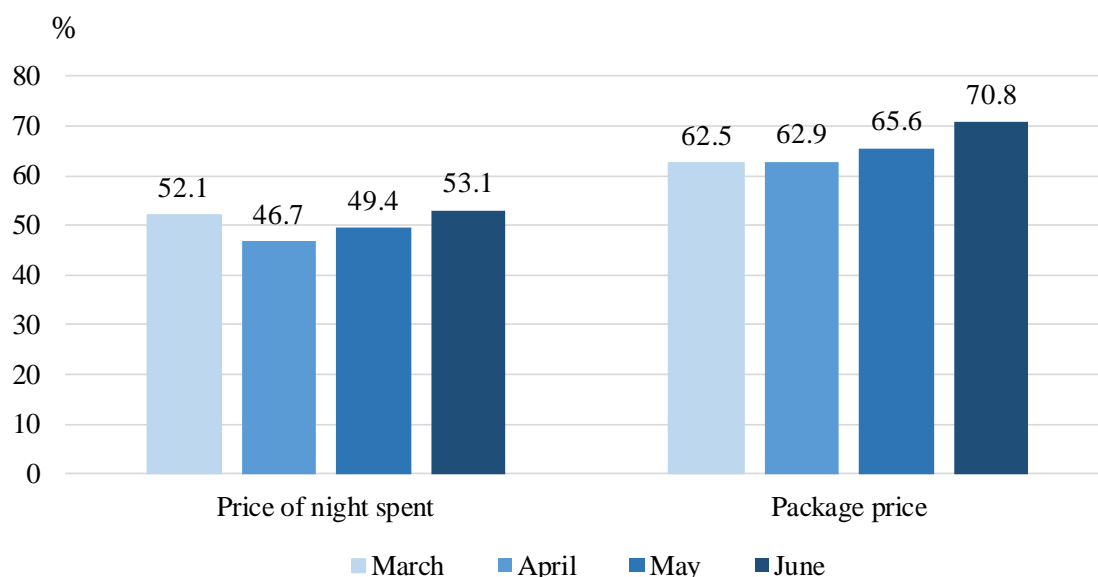


ACTIVITY AND CONDITION OF ACCOMMODATION ESTABLISHMENTS¹ DURING THE STATE OF EMERGENCY IN JUNE 2020

In July 2020, the National Statistical Institute conducted the monthly inquiry survey of the managers of accommodation establishments to gather accurate and timely information on the state and development of their businesses during the ensuing epidemic situation in the country.

In June, 55.9% of the respondents kept their opinion to offer their clients an alternative period to use the reservations. At the same time, for consecutive month most of them intend to reduce the price of both the package services and the night spent, by 70.8% and 53.1%, respectively.

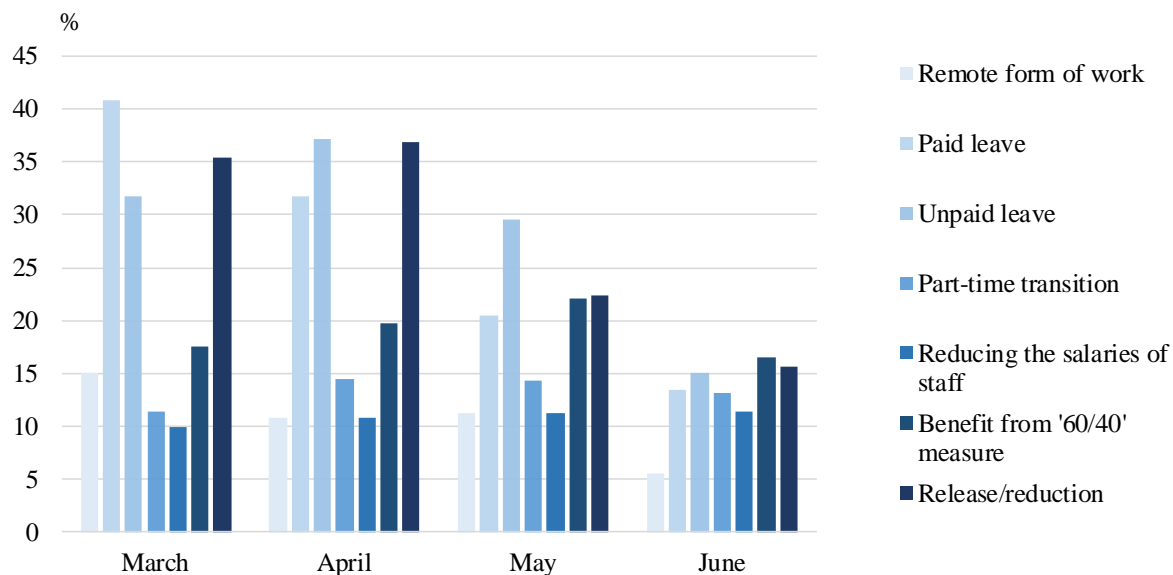
Figure 1. Price reduction of night spent or package services by months



With regard to the employees, in the last month the survey registered a decrease in the managers who took the main measures: ‘unpaid leave’, ‘release/reduction’, ‘60/40’ and ‘paid leave’ (Figure 2). At the same time, in the short term (1 month) 67.2% of the respondents plan to keep their staff and 23.0% of them expect to increase the employees in their accommodation.

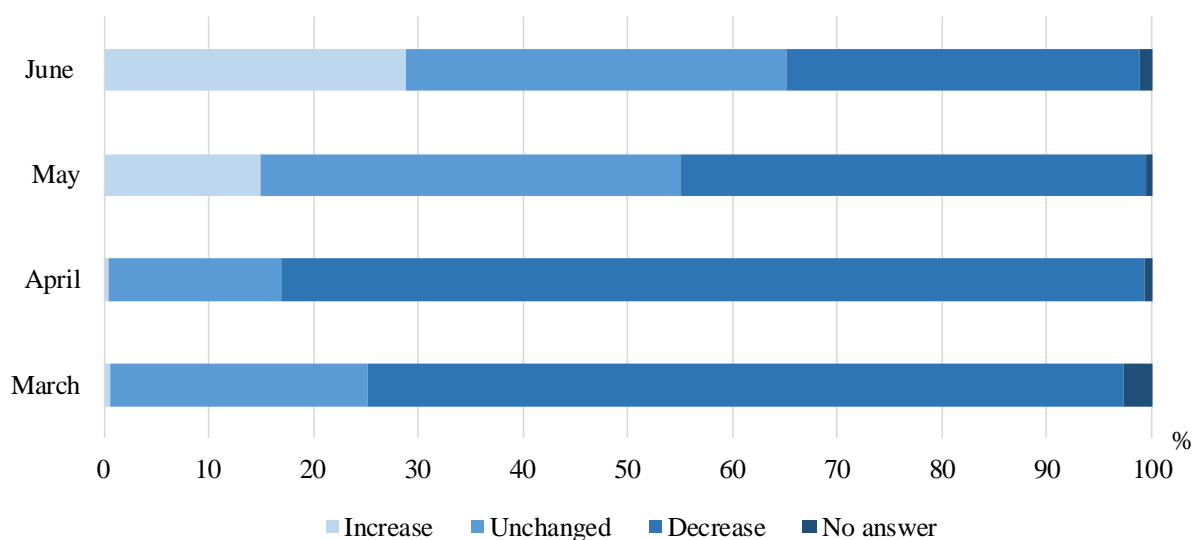
¹ Function during June 2020.

Figure 2. Actions taken against the available staff by months



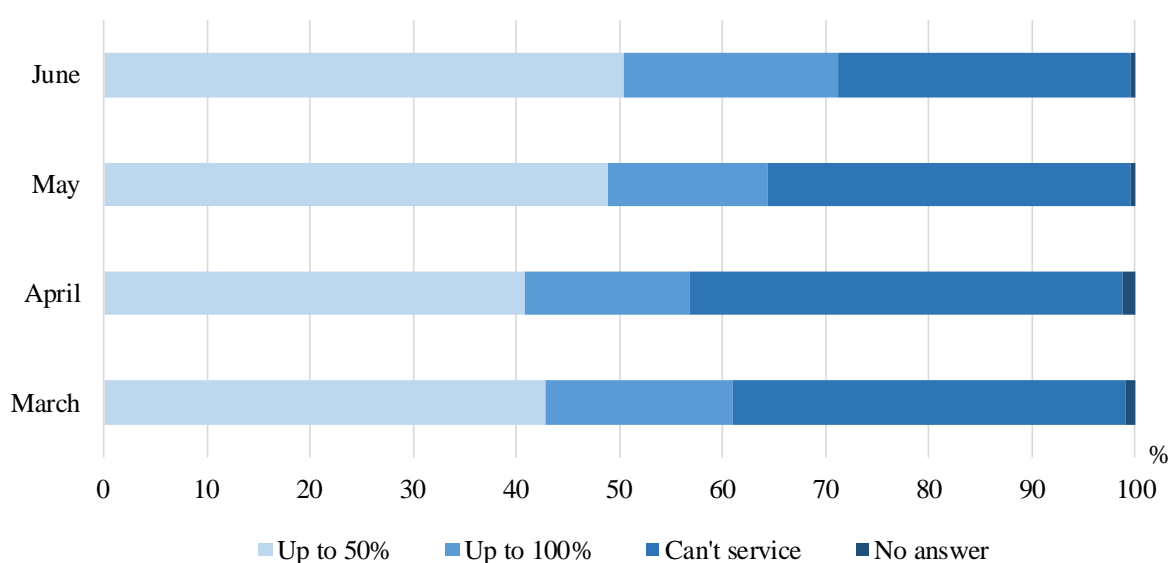
In June 28.8% of the managers report an increase of revenues from their activity compared to the previous month, while 36.4% indicated that there was no change in them (Figure 3).

Figure 3. Change of revenues of the activity as a result the state of emergency and the ensuing epidemic situation by months



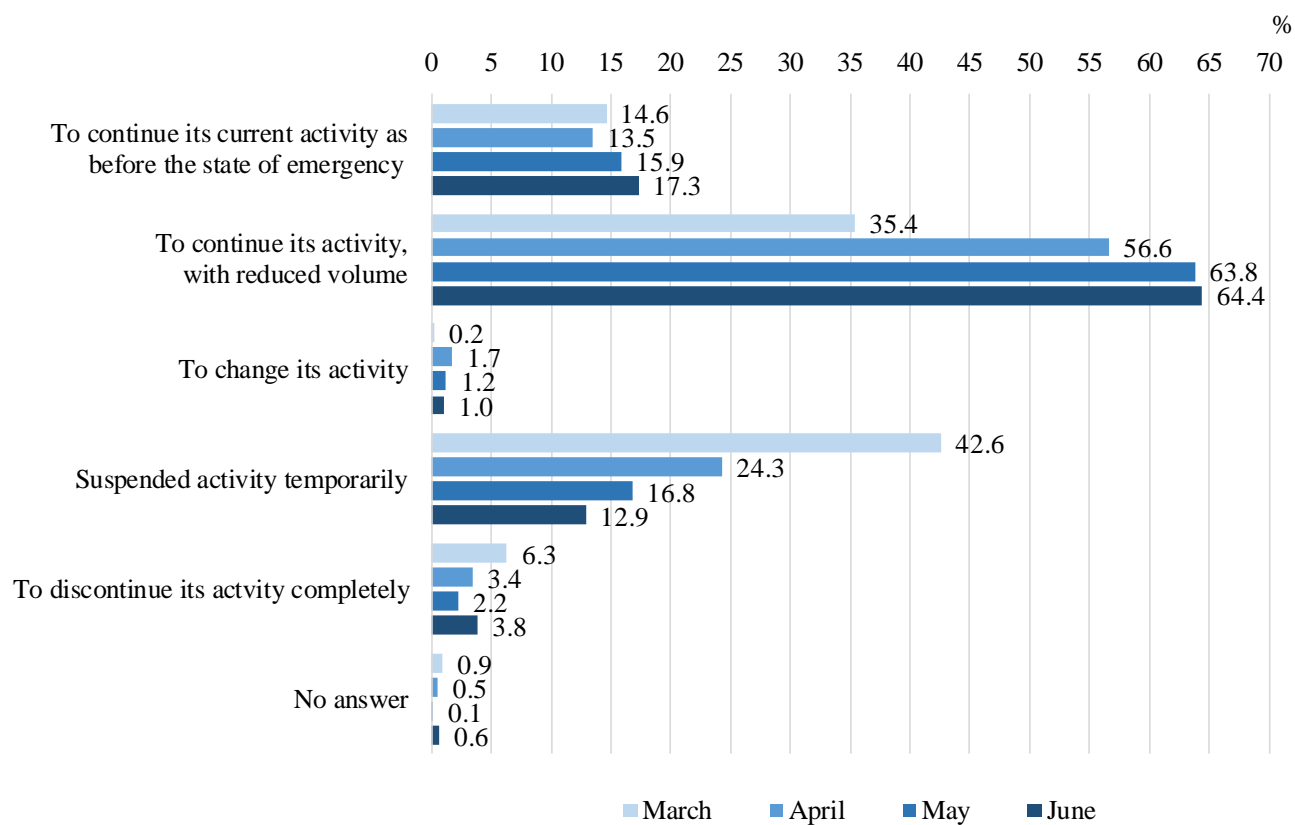
Over the next month, 50.5% of the managers predict that they will be able to serve ‘up to 50%’ of the expenditures of own account activity, 28.3% - will not be able to handle by themselves, and 20.7% of respondents indicate that they will succeed ‘up to 100%’.

Figure 4. Opportunity to serve the cost of the activity with your own funds in short term (one month) by month



In June with regard to their future short-term activity, the percentage of accommodation managers who intend to continue working even though with a reduced volume (64.4%), or expect to continue their activities, as before the state of emergency (17.3%) was increased. At the same time, 12.9% of them foresee to suspended activity temporarily and 3.8% predict to discontinue it.

Figure 5. Expectations for the future of the accommodation establishment in short term (one month) by months



Methodological notes

In the period from 7 to 22 July, the National Statistical Institute has conducted a short business survey of Accommodation Establishments. The purpose of the study is to provide to the society information of the impact in state of emergency and the ensuing epidemic situation related to COVID-19, on the most affected sectors of the economy in the country.

The survey accommodation establishments are included 2 592 categorized hotels, campsites and other short-term accommodation (villas and tourist settlements, hostels, guest houses, bungalows, holiday homes, chalets, private lodgings and apartments and other short-term accommodation establishments) with more than 10 beds functioned during June 2020. The participation in the survey is voluntary, providing information from 879 accommodation establishments (33.9% of the respondents) in the period from 7 to 22 July.