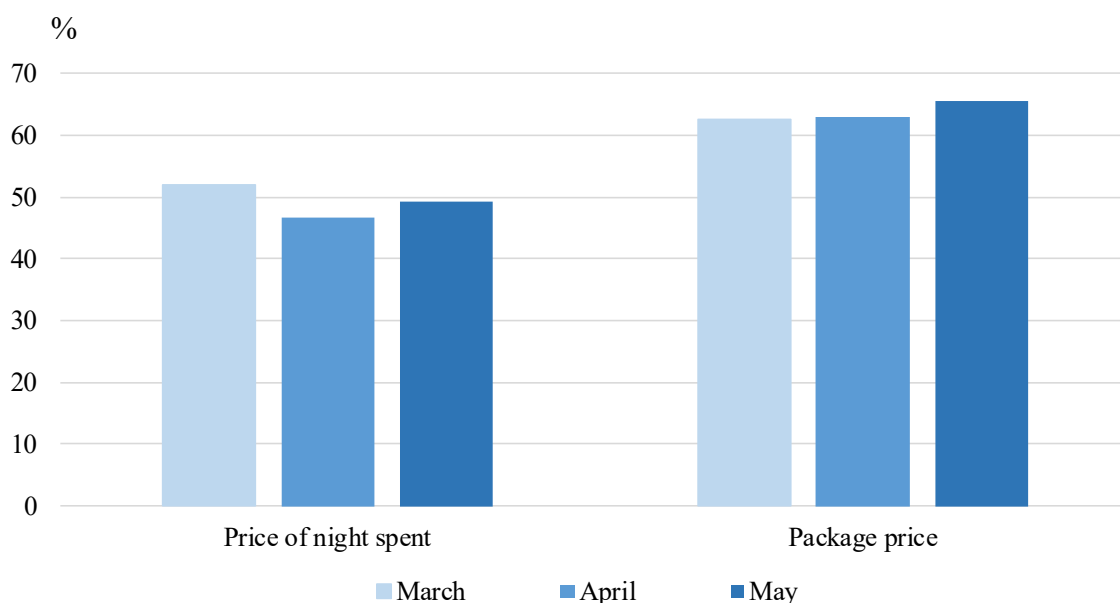


## **ACTIVITY AND CONDITION OF ACCOMMODATION ESTABLISHMENTS<sup>1</sup>** **DURING THE STATE OF EMERGENCY AND THE ENSUING** **EPIDEMIC SITUATION IN MAY 2020**

In June 2020, the National Statistical Institute has continued for third time in a row the monthly inquiry survey of the managers of accommodation establishments to gather accurate and timely information on the state and development of their businesses during the state of emergency and the ensuing epidemic situation in the country.

In May, 57.5% of the respondents consider offering their clients an alternative period to use the reservations, 65.6% intend to reduce the price of package services and 49.4% - the price of night spent.

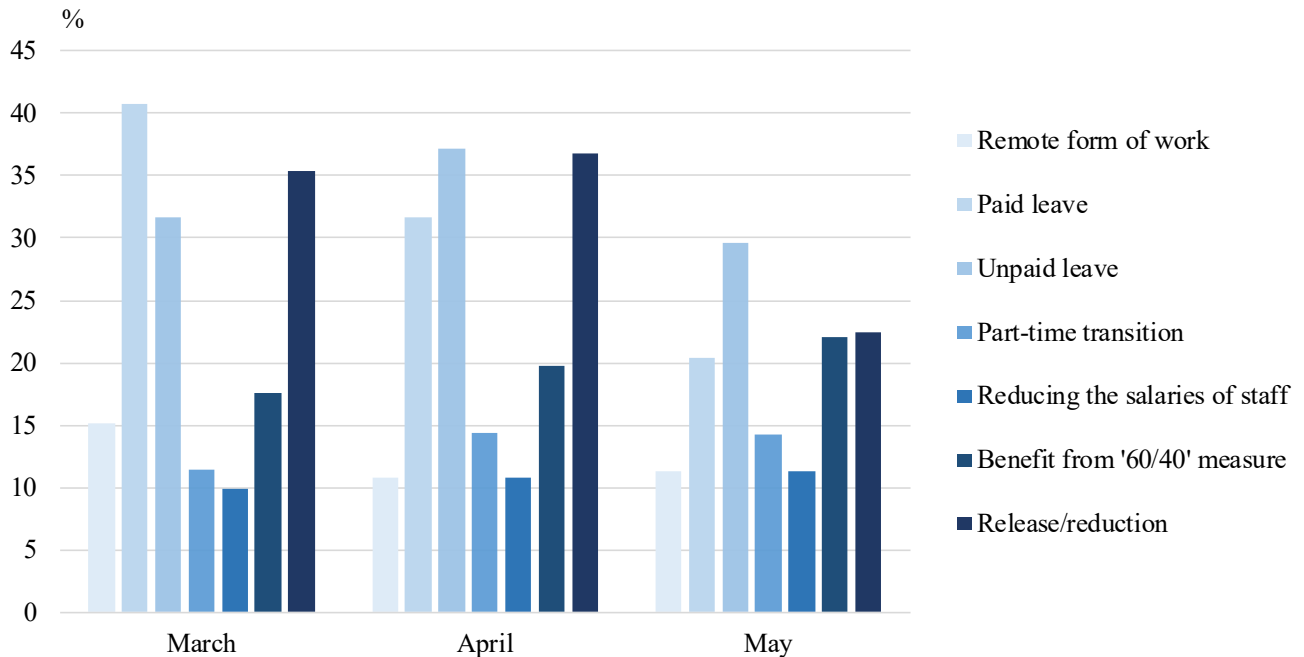
**Figure 1. Price reduction of night spent or package services by months**



As regards to the employees, 29.6% of managers have taken ‘unpaid leave’ as a measure, followed by ‘re-lease/reduction’- 22.4%, and ‘60/40’ - 22.1%. 20.4% of the managers have benefited from the ‘paid leave’ and 11.3% have applied ‘remote form of work’ or ‘reduction the salaries of staff’ (Figure 2).

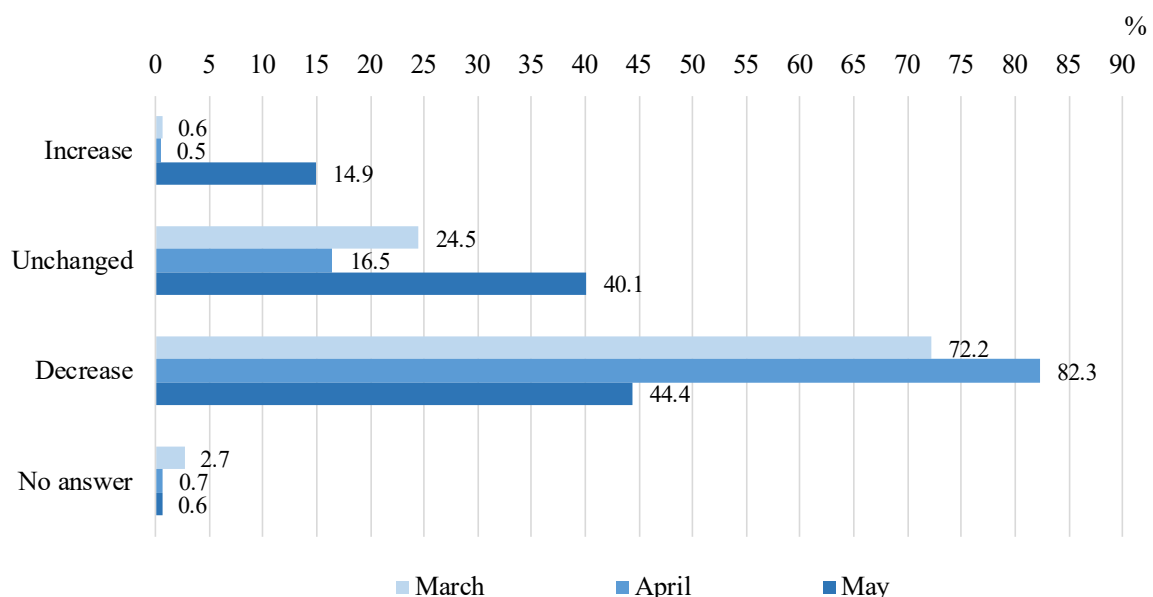
<sup>1</sup> Function during May 2020.

**Figure 2. Actions taken against the available staff by months**



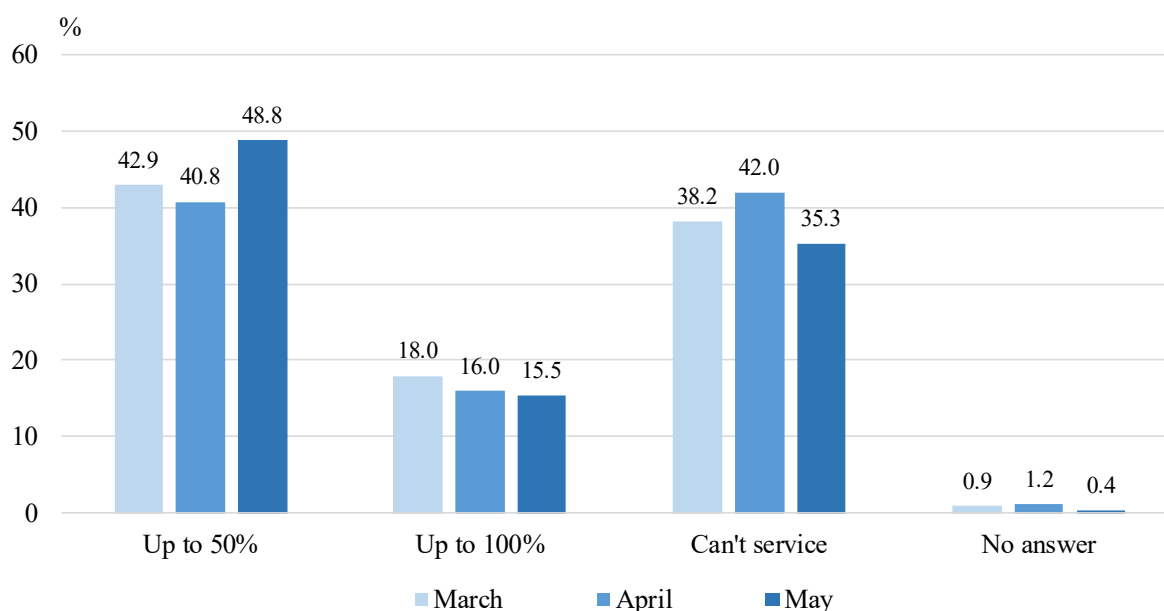
In May 44.4% of the managers report a decrease of revenues from the activity compared to the previous month, while 40.1% indicate that there is no change (Figure 3).

**Figure 3. Change of revenues of the activity as a result the state of emergency by months**



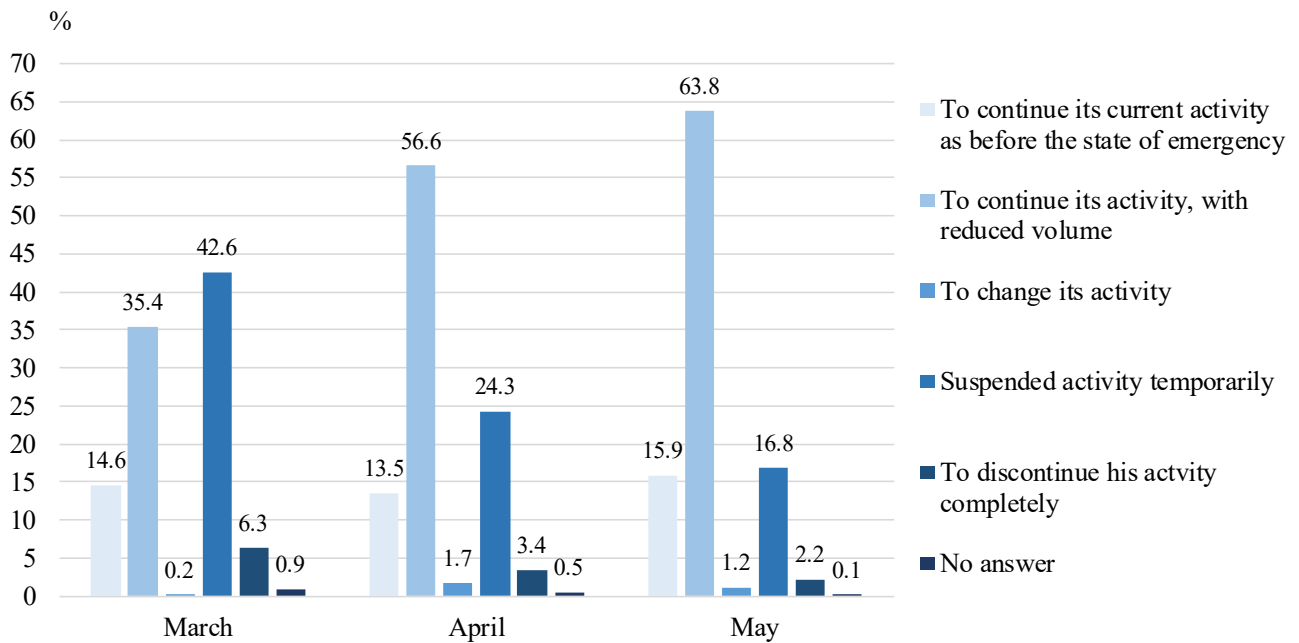
In short term (in the next one month), 48.8% of the managers predict that they will be able to serve ‘up to 50%’ of the expenditures of own account activity, 35.3% - will not be able to handle by themselves and 15.5% of the respondents indicate that they will succeed ‘up to 100%’

**Figure 4. Opportunity to serve the cost of the activity with your own funds in short term (one month) by month**



In May as regard to the future activity in short term, 63.8% of the managers of accommodation establishment consider to continue working even though with reduced volume, 16.8% expect to suspend their activity temporarily, 15.9% expect to continue their activity, as before the state of emergency and only 2.2% predict to discontinue it.

**Figure 5. Expectations for the future of the accommodation establishment in short term (one month) by months**



## Methodological notes

In the period from 4 to 22 June, the National Statistical Institute has conducted a short business survey of Accommodation Establishments. The purpose of the study is to provide to the society information of the impact in state of emergency and the ensuing epidemiological situation related to COVID-19, on the most affected sectors of the economy in the country.

The survey accommodation establishments are included 1 933 categorized hotels, campsites and other short-term accommodation (villas and tourist settlements, hostels, guest houses, bungalows, holiday homes, chalets, private lodgings and apartments and other short-term accommodation establishments) with more than 10 beds functioned during May 2020. The participation in the survey is voluntary, providing information from 804 accommodation establishments (41.6% of the respondents) in the period from 4 to 22 June.