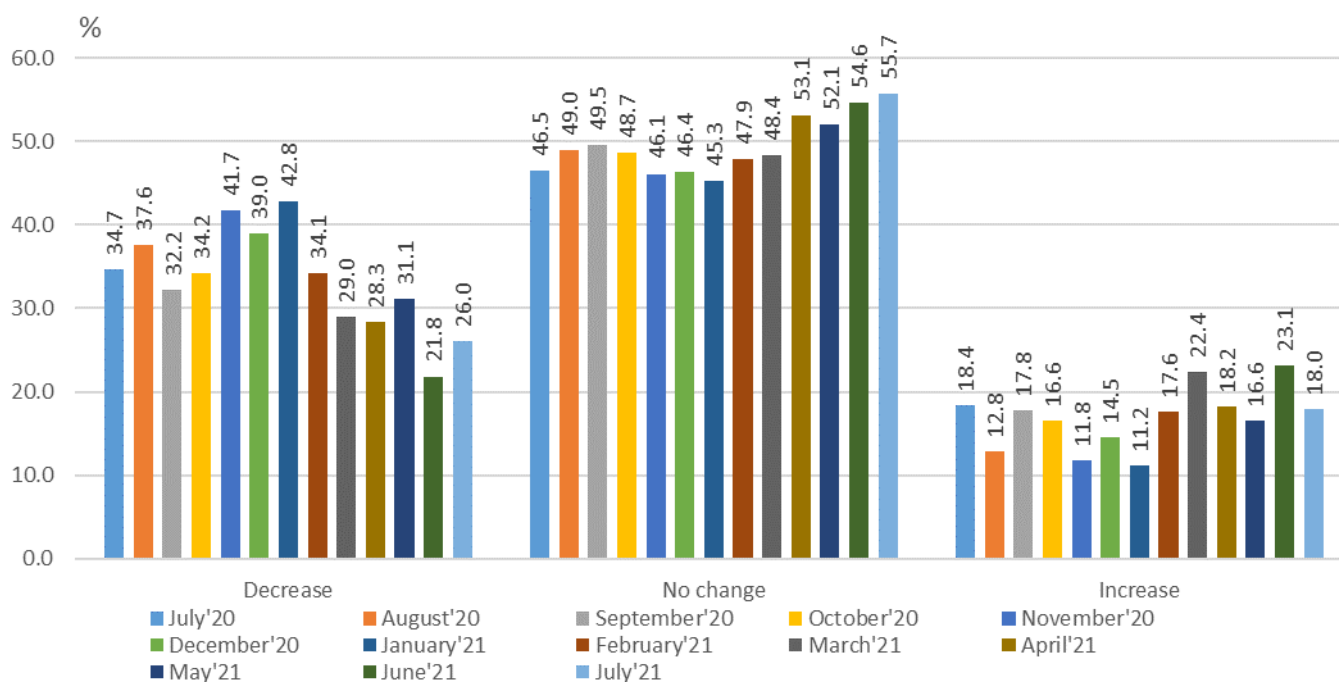


## SITUATION OF THE NON-FINANCIAL ENTERPRISES IN THE EPIDEMIC SITUATION JULY 2021

The National Statistical Institute of Bulgaria conducted short business survey amongst non-financial enterprises aiming to collect and present to the society and policy makers information on the economic effects from the declared state of emergency and the ensuing epidemic situation in the country due to COVID-19.

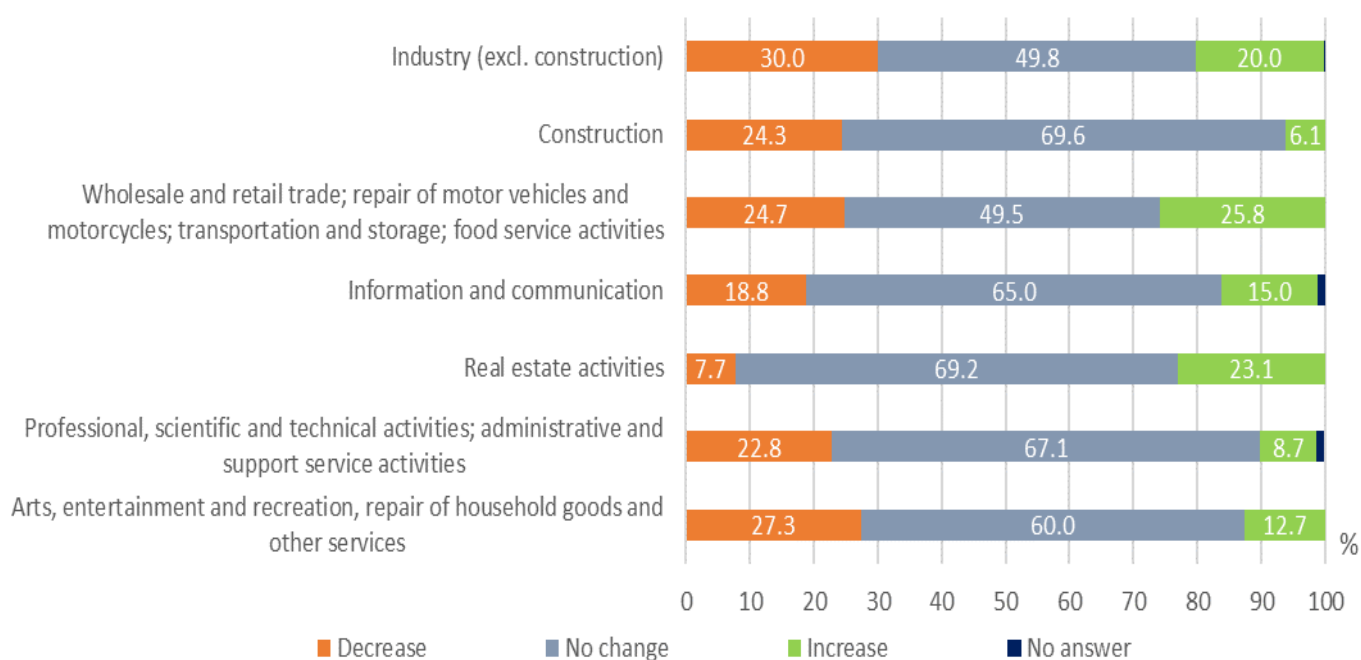
In July 2021, 26.0% of the responded non-financial enterprises declared a decrease in revenues from sales of goods and services compared to June 2021, 55.7% declared no change and 18.0% - an increase (Figure 1).

**Figure 1. Change in revenues from sales of goods and services in non-financial enterprises as compared to previous month, 2021**



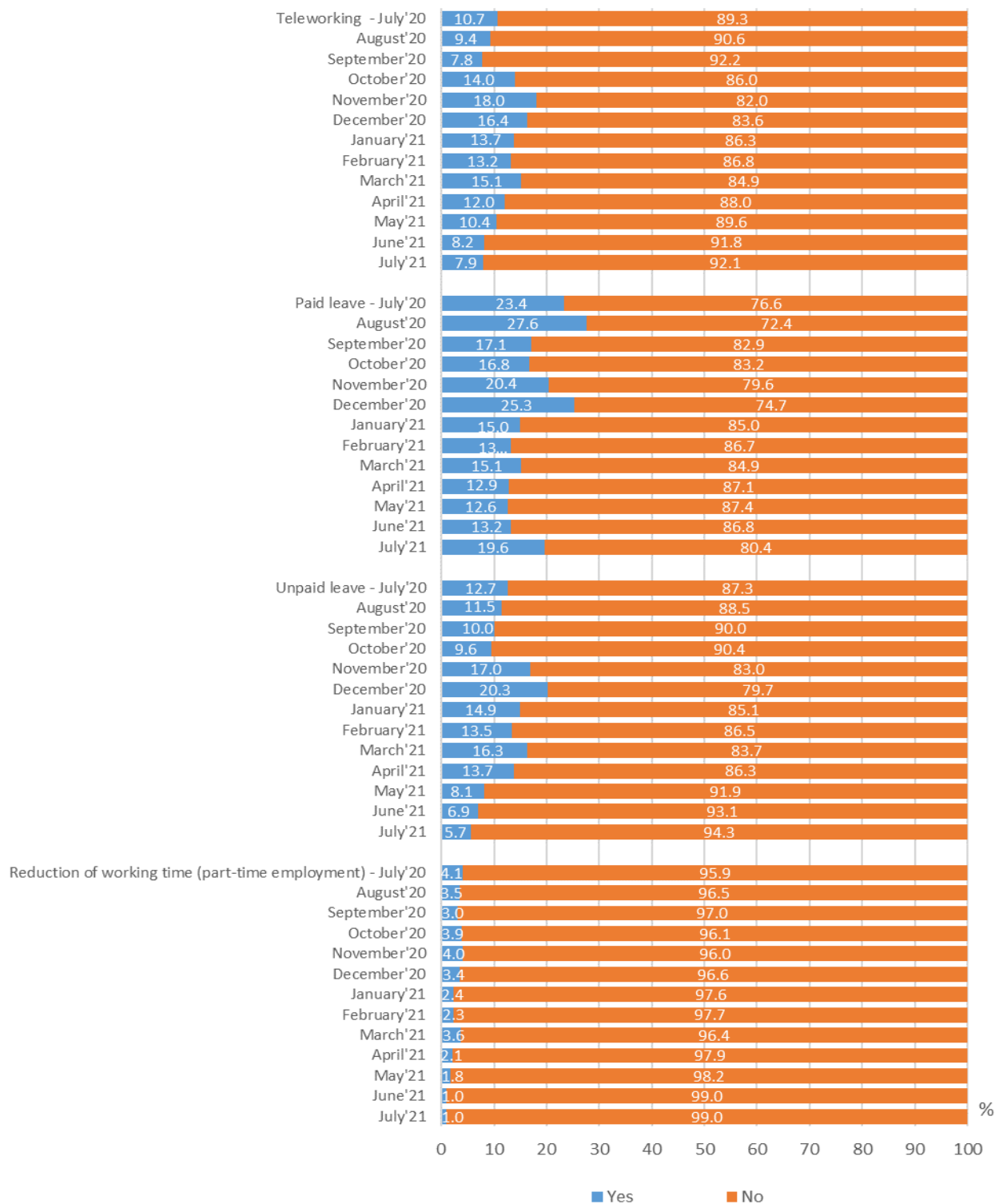
The breakdown by economic sectors showed that in July 2021, 30.0% of the non-financial enterprises in ‘Industry’ had a decrease in revenues from sales of goods and services, followed by ‘Arts, entertainment and recreation, repair of household goods and other services’ with 27.3% and ‘Wholesale and retail trade; repair of motor vehicles and motorcycles; transportation and storage; food service activities’ with 24.7% (Figure 2).

**Figure 2. Change in revenues from sales of goods and services in non-financial enterprises in July 2021 as compared to previous month, by economic sectors**

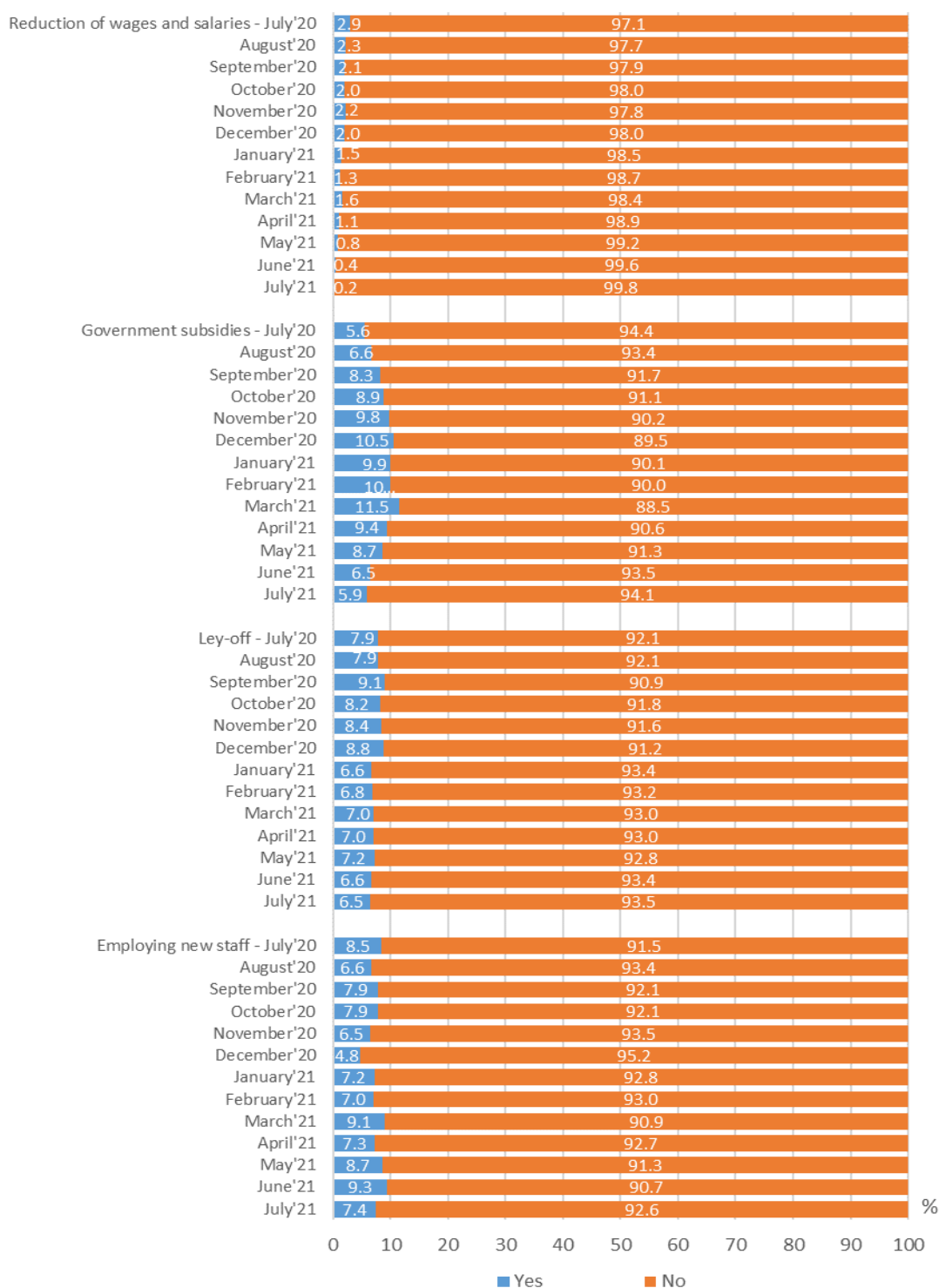


As regards the employees, 19.6% from the responding non-financial enterprises answered that they had to use ‘Paid leave’ as a measure for reducing the effects from the state of emergency and the epidemic situation, followed by ‘Teleworking’ - 7.9%, and ‘Ley-off’ - 6.5%. In July 2021, 7.4% from the responding non-financial enterprises answered that they had to employ new staff (Figure 3).

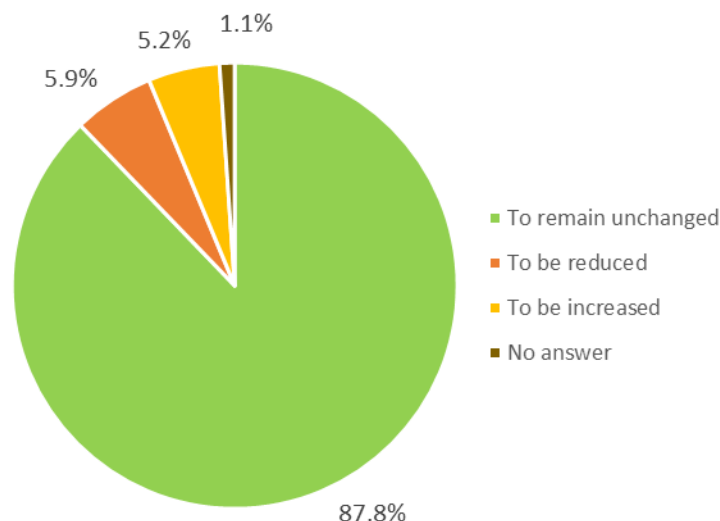
**Figure 3. Measures taken concerning employees in the enterprise**



**Figure 3. Measures taken concerning employees in the enterprise (continued and end)**



**Figure 4. Expectations about the number of employees in the enterprise in short-term period (1 month)**



In the following month 95.8% from the answered non-financial enterprises, expect that they will be able to continue their current activity, 1.6% expect to stop to perform economic activity temporary, while 1.5% expect to close down their business (Table 1).

**1. Expectations about the enterprise future in short-term period (1 month)**

(Per cent)

Period	To continue to perform its current activity	To stop to perform economic activity temporary	To stop to perform economic activity at all	To change its activity	No answer
July 2020	93.4	3.4	1.4	1.2	0.5
August 2020	94.5	2.0	1.8	1.0	0.6
September 2020	95.1	1.9	2.2	0.6	0.2
October 2020	94.4	3.2	1.6	0.5	0.2
November 2020	92.5	4.5	2.1	0.8	0.1
December 2020	92.0	4.7	1.7	1.1	0.5
January 2021	92.9	3.4	2.0	1.1	0.5
February 2021	93.7	2.1	1.9	1.8	0.5
March 2021	93.4	2.3	1.9	1.4	1.1
April 2021	95.1	1.3	2.5	0.7	0.4
May 2021	94.6	1.7	2.2	0.9	0.7
June 2021	94.9	1.3	2.3	0.6	0.9
July 2021	95.8	1.6	1.5	0.3	0.7

## Methodological notes

The survey of ‘Non-financial enterprises’ was carried out in August, in the sample were included 3 770 enterprises with at about 230 thousand employees. The participation in the survey was voluntary.

The unit of observation is the enterprise, which carries out one or more activities on one or more locations and produces goods or services for third parties. The definition of the enterprise meets the requirements of Regulation (EC) No. 696/93 for statistical units. The data refer to the activities of non-financial enterprises carried out on the territory of the country.

The coverage of economic activities is as follows: Industry; Construction; Wholesale and retail trade; repair of motor vehicles and motorcycles; transportation and storage; food service activities; Real estate activities; Information and communication; Professional, scientific and technical activities; administrative and support service activities; Arts, entertainment and recreation, repair of household goods and other services.

Not covered by the survey are economic activities: Agriculture, forestry and fishing; Financial and insurance activities; Human health and social work activities; Education; Public administration and defense; compulsory social security.