

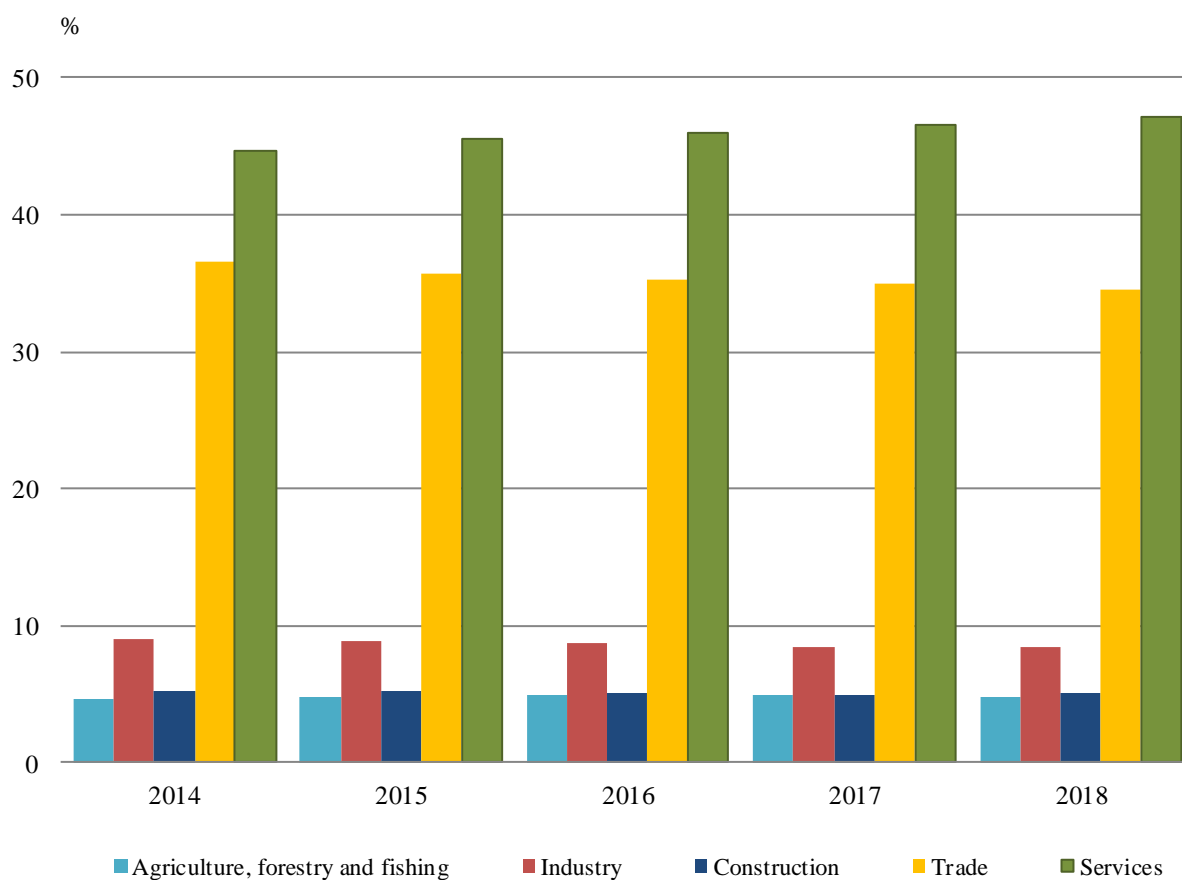


ACTIVITY OF NON-FINANCIAL ENTERPRISES¹ FOR 2018 (PRELIMINARY DATA)

1. Overview

Annual reports on their activity for 2018 were submitted at the National Statistical Institute by 413 162 non-financial enterprises.

Figure 1. Percentage share of enterprises by economic sectors and by years



The number of persons employed in the non-financial enterprises was 2 207 549, the production value at current prices amounted to 180 626 million BGN and a positive financial result of 17 035 million BGN was realized.

¹ The non-financial enterprises include all sections by NACE Rev. 2 with the exception of 'Financial and insurance activities', 'Public administration and defence, compulsory social security', 'Activities of membership organisations' and 'Activities of households'.



Figure 2. Production value per employee by economic sectors and by years

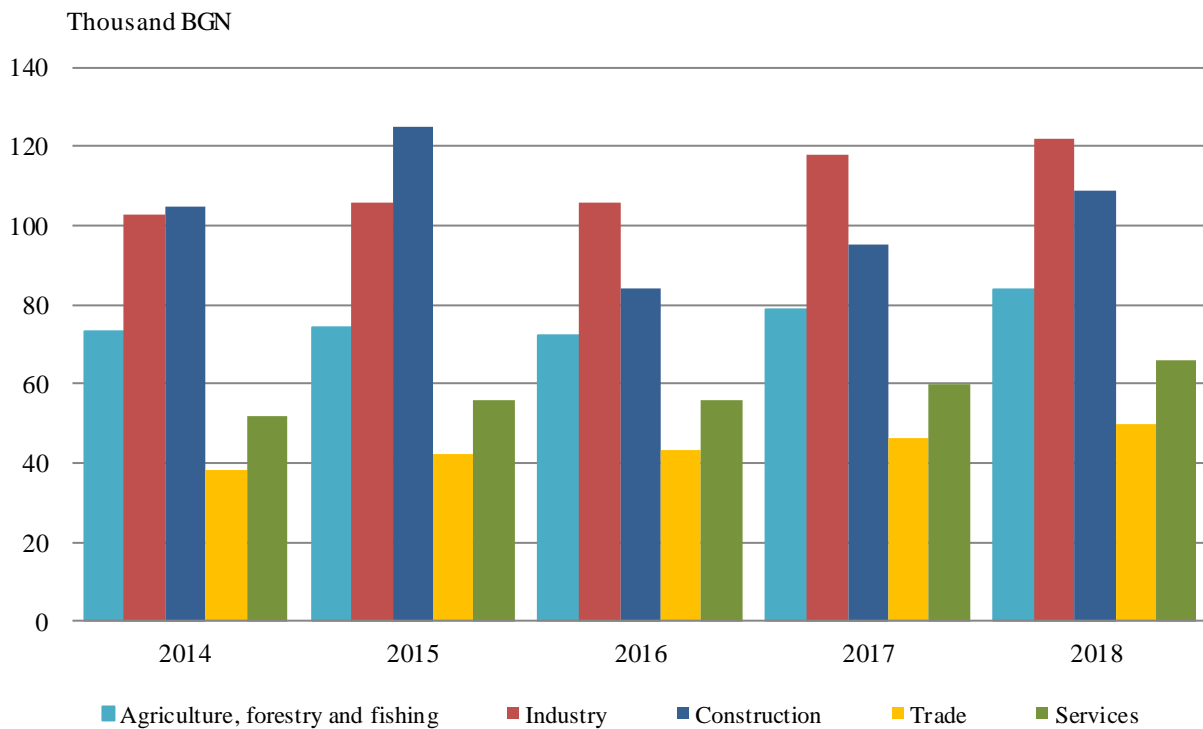
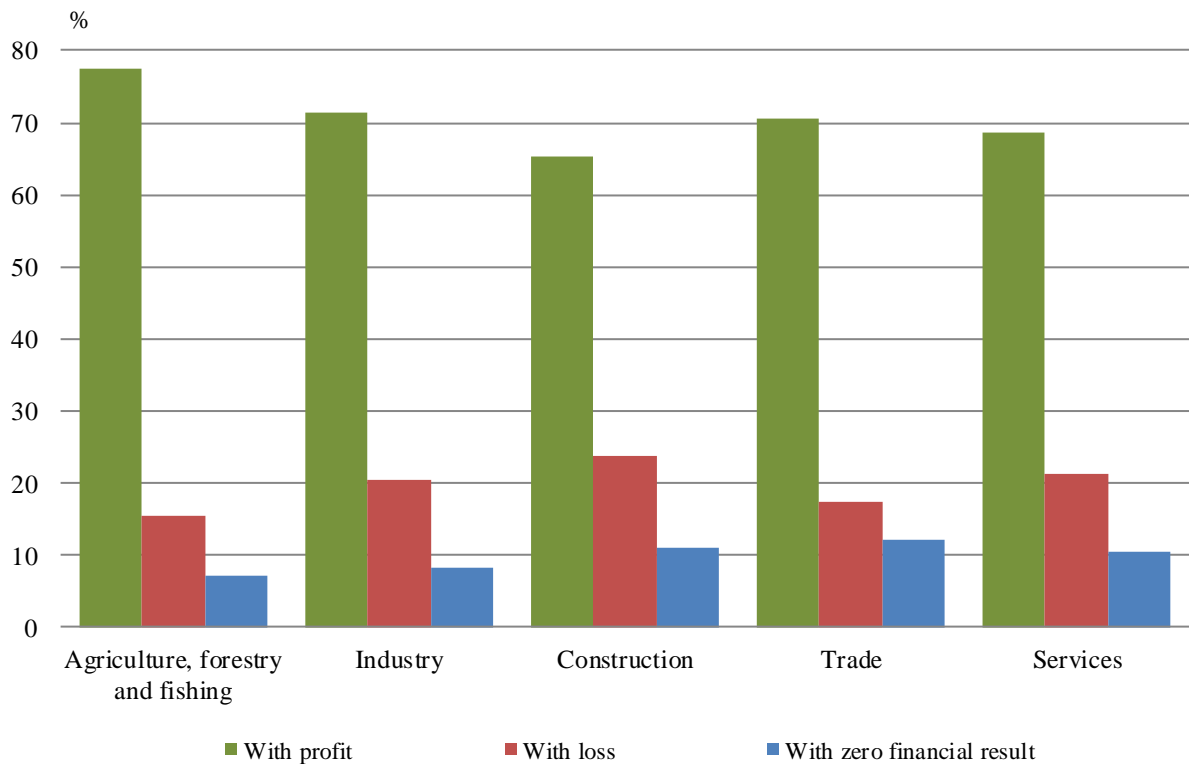


Figure 3. Percentage share of enterprises according to the financial result by economic sectors for 2018

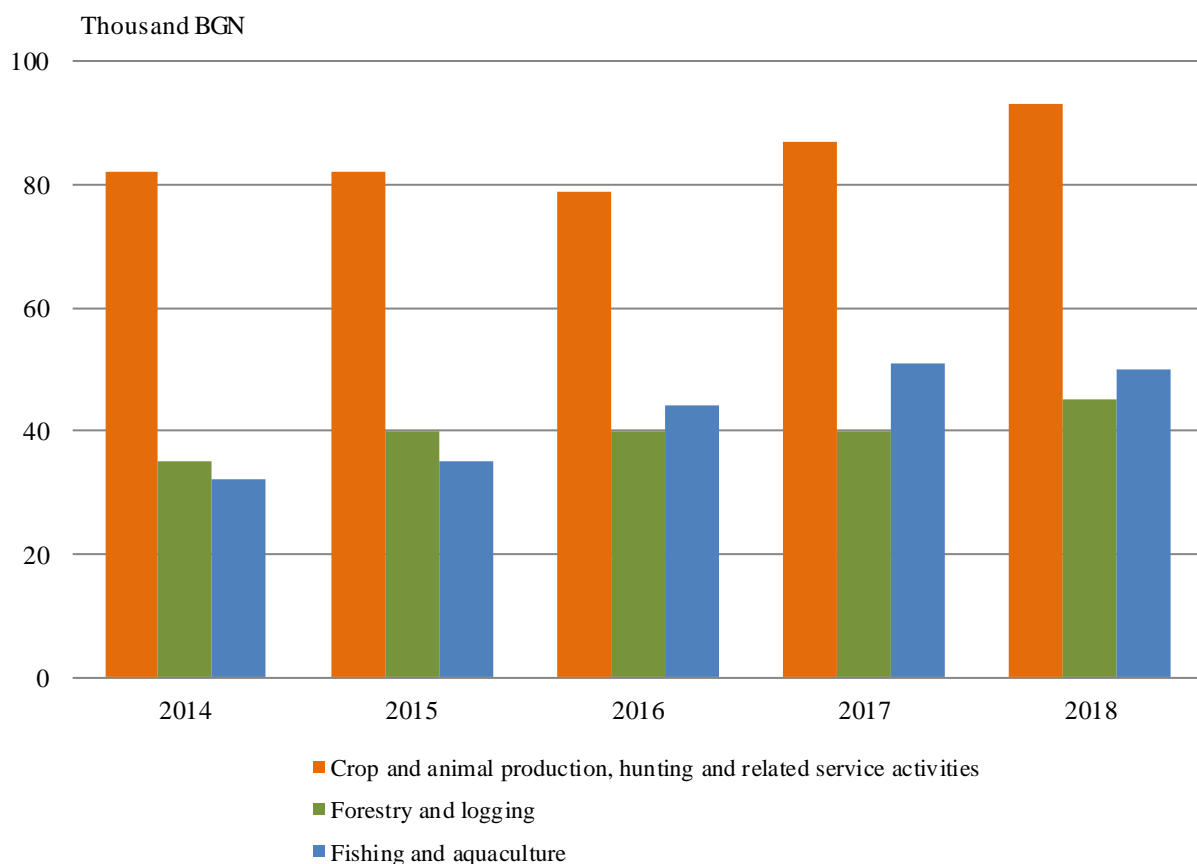




2. Agriculture, Forestry and Fishing

At the NSI 19 902 enterprises in sector ‘Agriculture, Forestry and Fishing’ submitted annual reports on their activity for 2018 or 4.8% of the total number of the reported non-financial enterprises. These enterprises generated production value of 7 343 million BGN at current prices and employed 87 006 persons. A positive financial result of 1 074 million BGN was reported, as 77.5% of the enterprises finished 2018 with profit, 15.4% - with loss and 7.1% with zero financial result.

Figure 4. Production value per employee by Agriculture, Forestry and Fishing sectors and by years



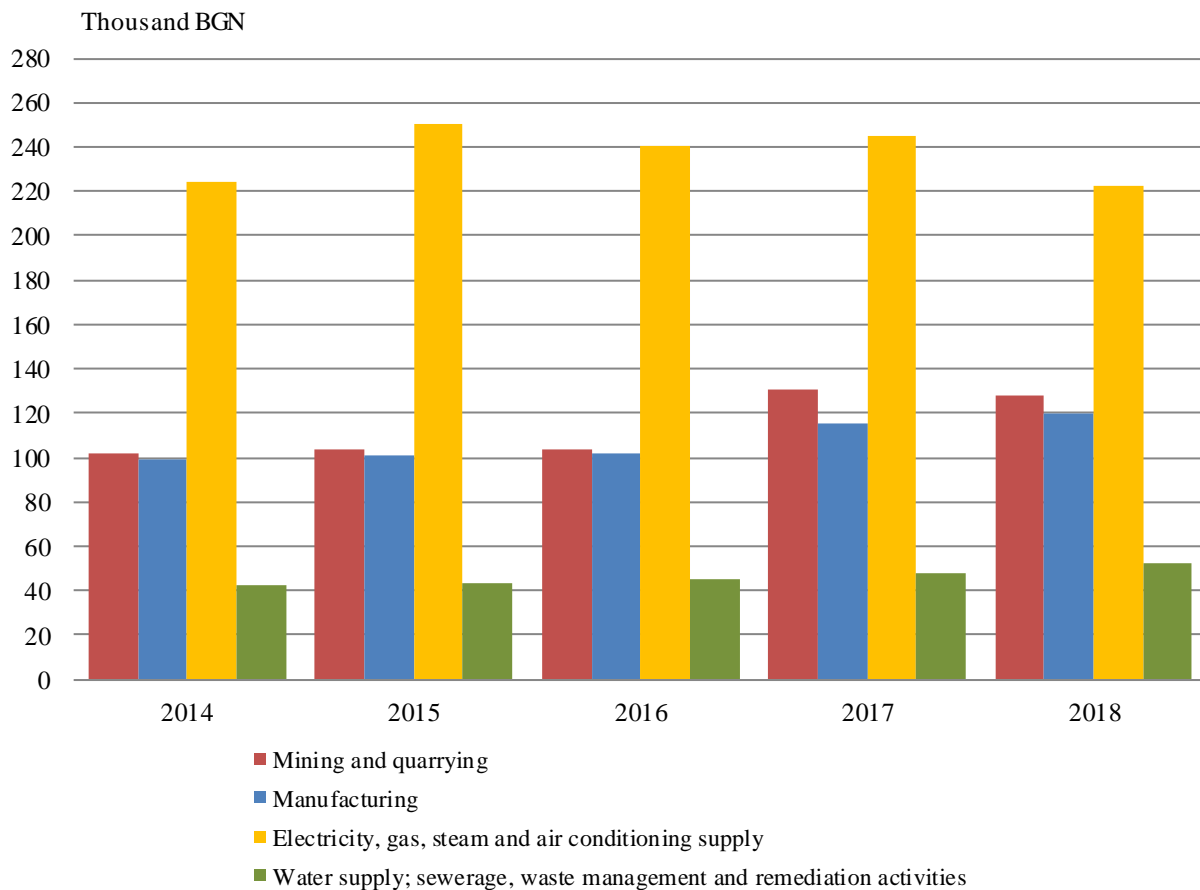


3. Industry

Annual reports on their activities for 2018 were submitted by 34 862 industrial enterprises or 8.4% of the total number of the reported non-financial enterprises at the NSI, as more than 91% of them were concentrated in sector ‘Manufacturing’.

In 2018 the production value at current prices, manufactured by industrial sector amounted to 76 799 million BGN, which formed 42.5% of the total production value of non-financial enterprises. This sector employed 627 790 persons or 28.4% of the total number of persons employed in non-financial enterprises.

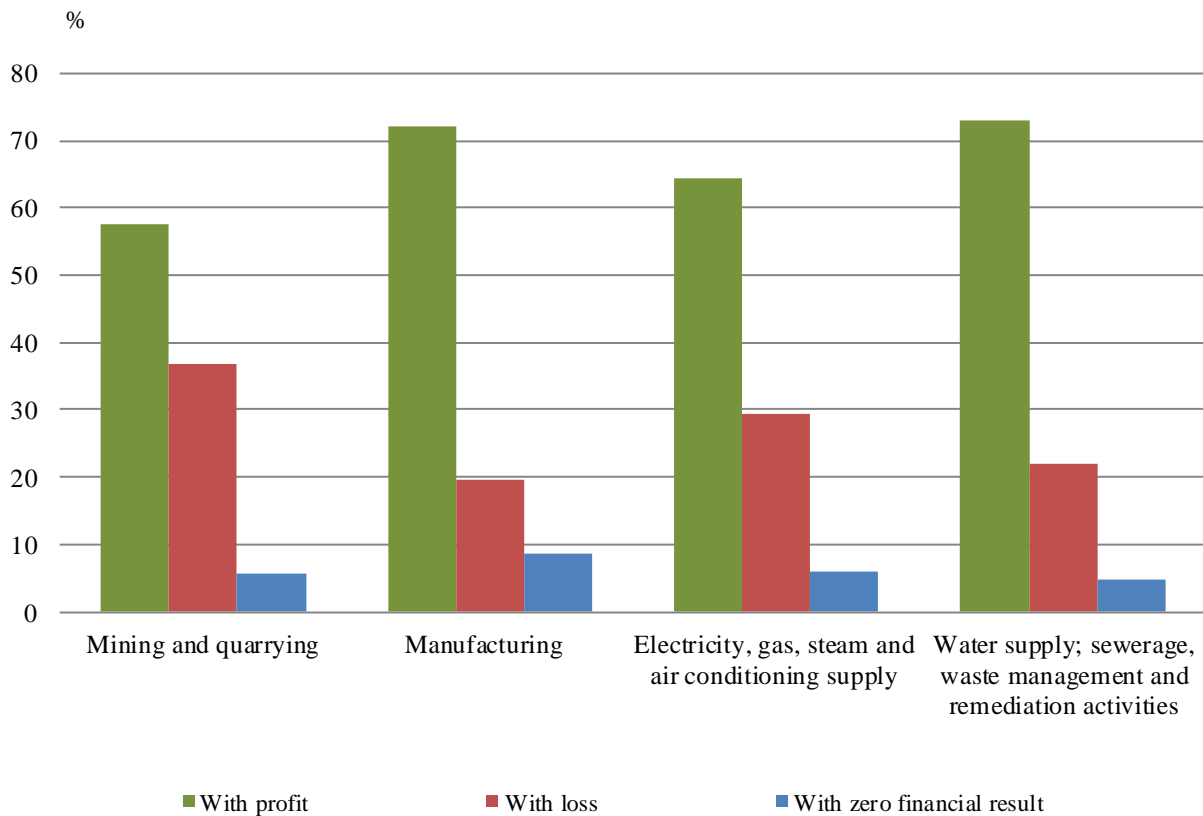
Figure 5. Production value per employee by industrial sectors and by years





The industrial enterprises finished 2018 with a positive financial result of 4 283 million BGN at current prices. The largest contribution had sector ‘Manufacturing’ which formed 80.5% of that result.

Figure 6. Percentage share of industrial enterprises according to the financial result for 2018

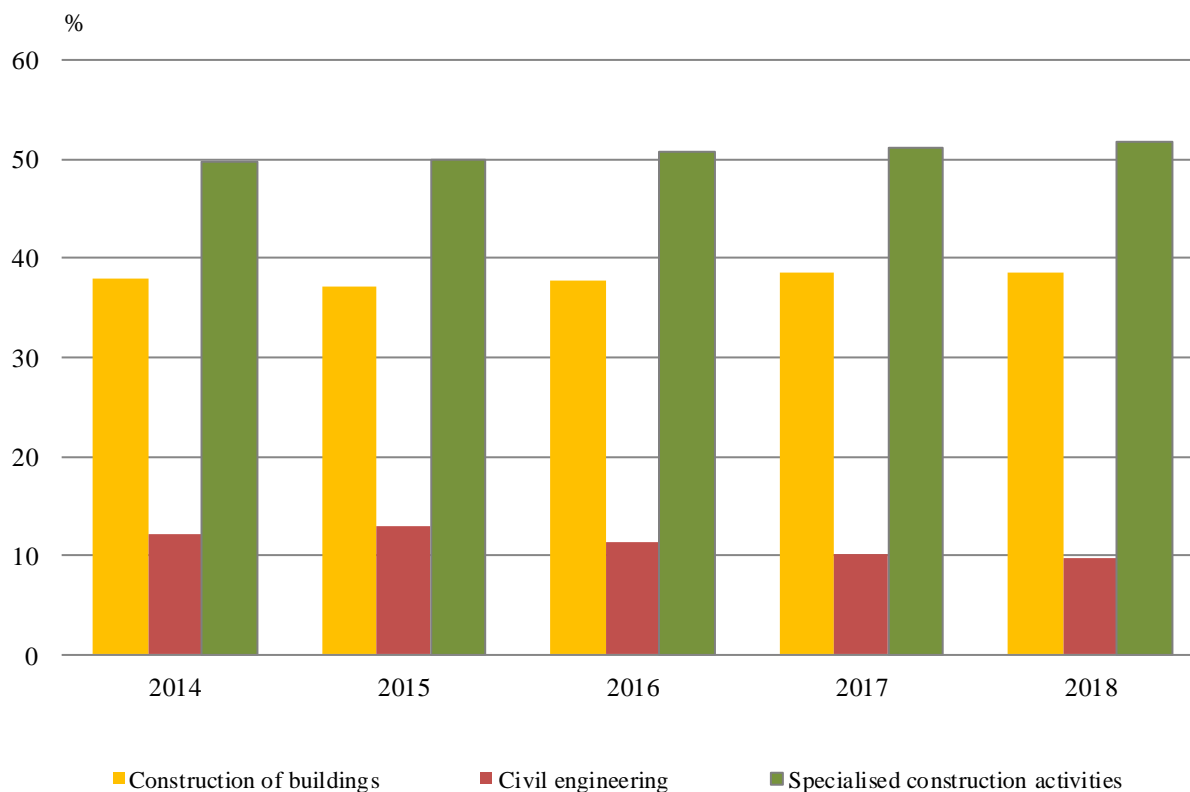




4. Construction

At the NSI 20 924 construction enterprises submitted annual reports on their activity for 2018 or 5.1% of the total number of the reported non-financial enterprises. The largest share (51.7%) had the enterprises engaged in specialized construction activities.

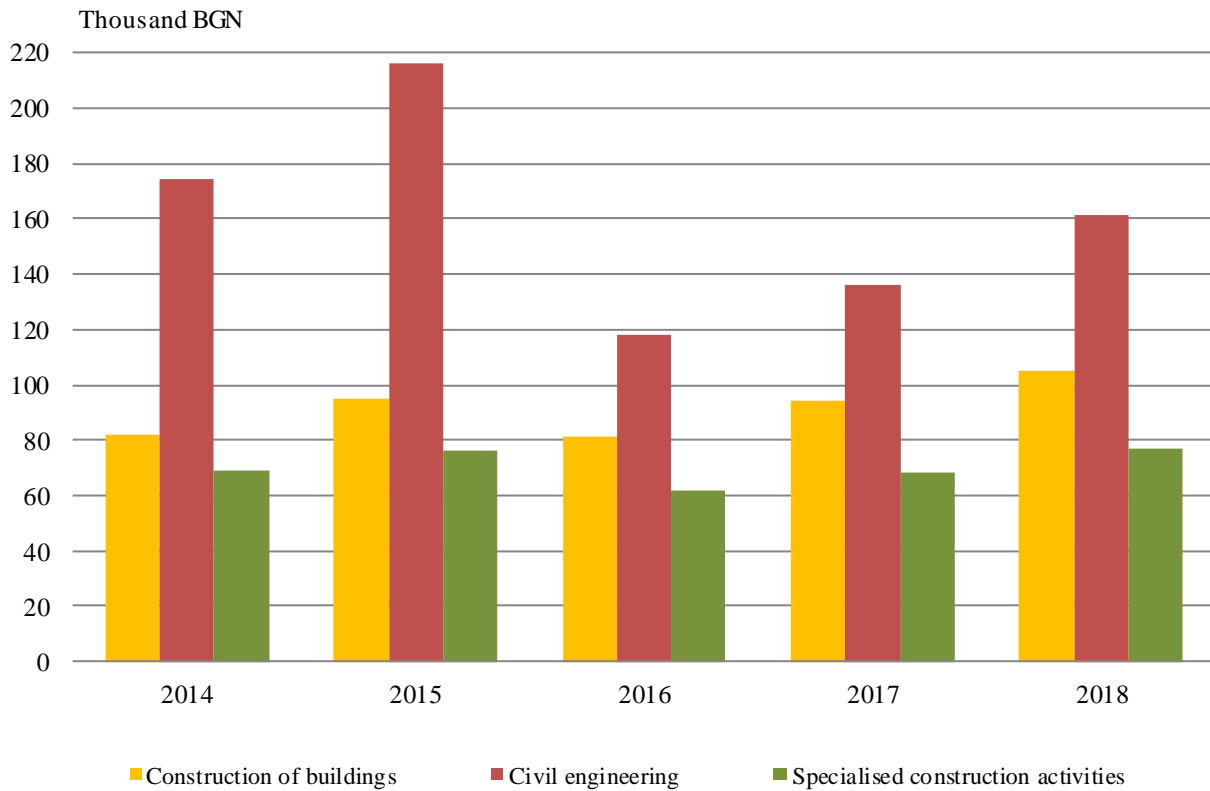
Figure 7. Percentage share of enterprises by construction activities and by years





In 2018 the construction sector generated production value of 15 758 million BGN at current prices, or 8.7% of the total production value of non-financial enterprises. The construction enterprises employed 144 851 persons that formed 6.6% of the total number of persons employed in non-financial enterprises.

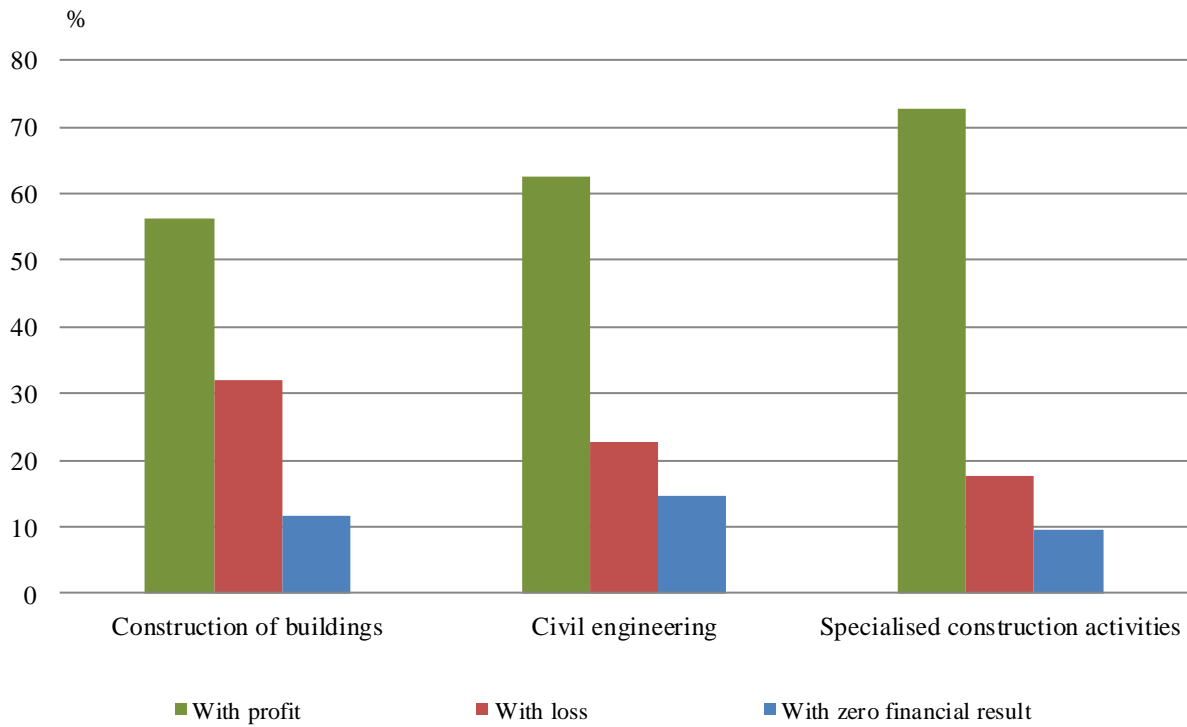
Figure 8. Production value per employee by construction activities and by years





The construction sector finished 2018 with a positive financial result of 948 million BGN at current prices.

Figure 9. Percentage share of construction enterprises according to the financial result for 2018

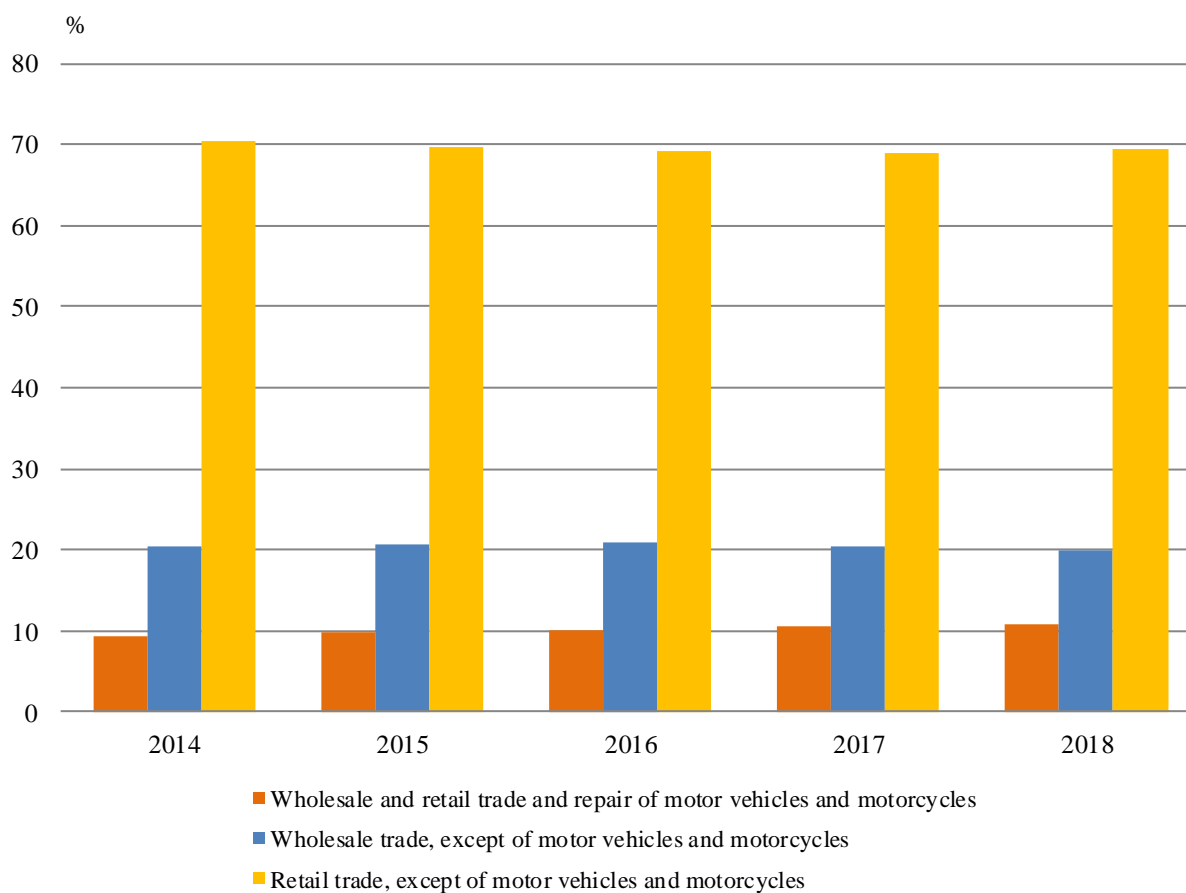




5. Wholesale and retail trade; repair of motor vehicles and motorcycles

Annual reports on their activity for 2018 were submitted at the NSI by 142 714 trade enterprises or 34.5% of the total number of the reported non-financial enterprises. The largest share of enterprises had 'Retail trade, except of motor vehicles and motorcycles' - 69.4% of the trade enterprises.

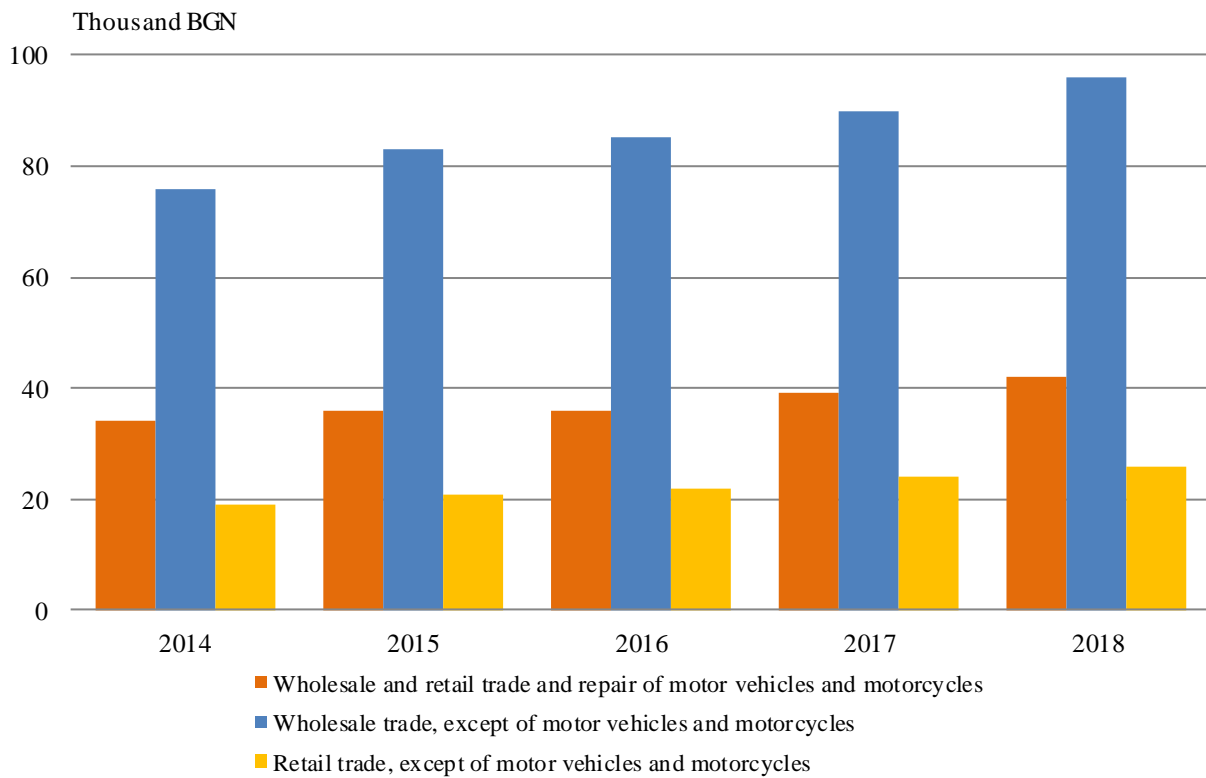
Figure 10. Percentage share of enterprises by trade activities and by years





In 2018 the trade sector generated production value of 24 737 million BGN at current prices or 13.7% of the total production value of non-financial enterprises. This sector engaged 498 896 persons, or 22.6% of the total number of persons employed in non-financial enterprises.

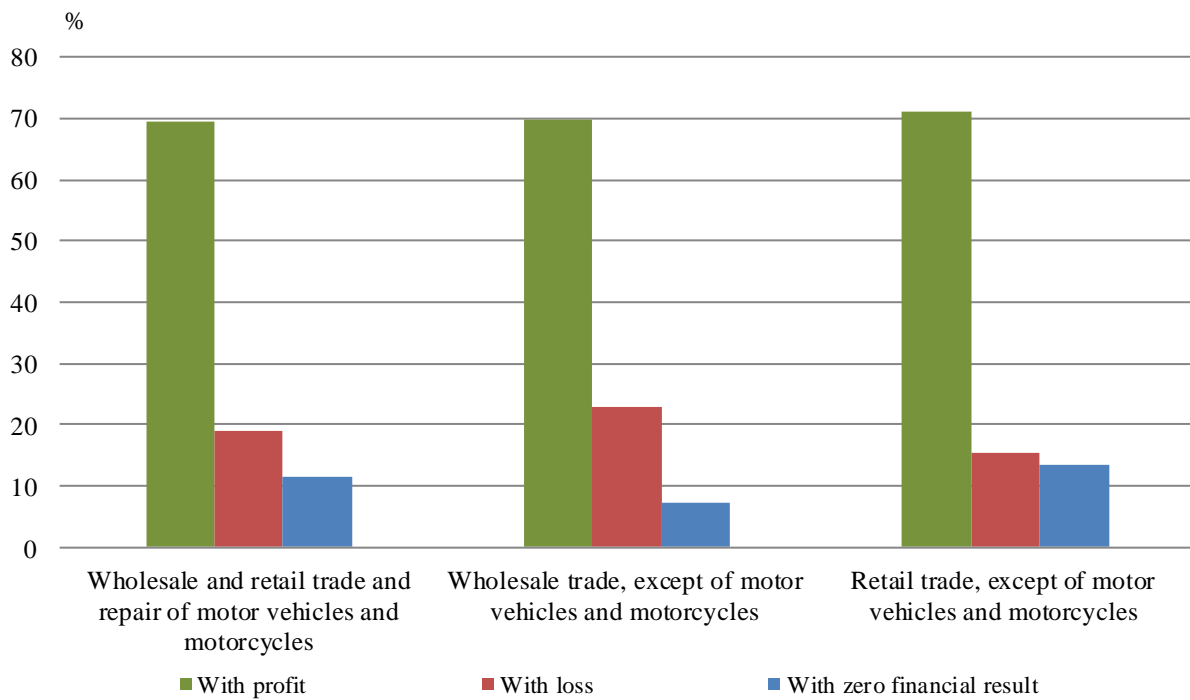
Figure 11. Production value per employee by trade activities and by years





The trade enterprises realized a positive financial result of 4 363 million BGN in 2018 at current prices and ‘Wholesale trade, except of motor vehicles and motorcycles’ formed 69.4% of that result.

Figure 12. Percentage share of trade enterprises according to the financial result for 2018

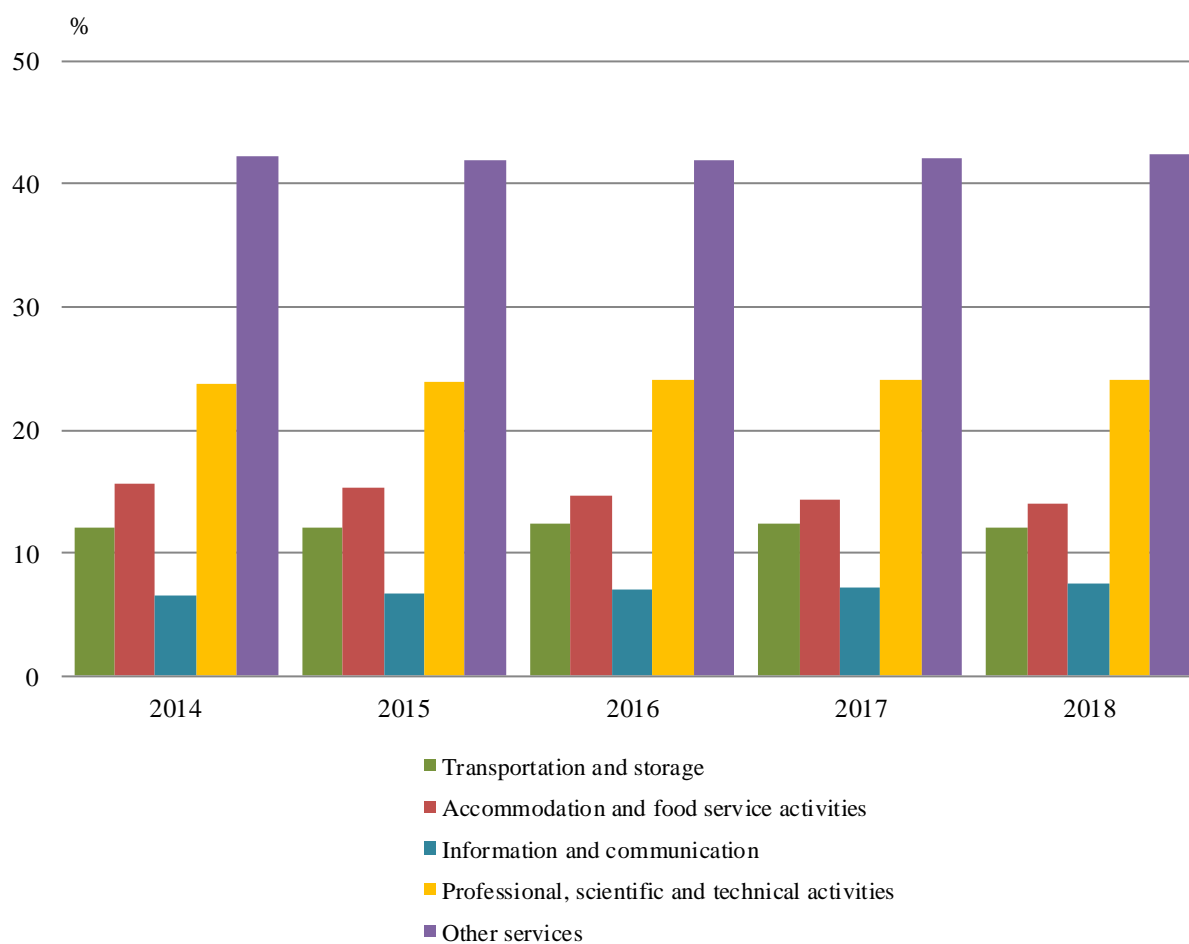




6. Services

At the NSI 194 760 enterprises in service sector submitted annual reports on their activity for 2018 or 47.2% of the total number of reported non-financial enterprises.

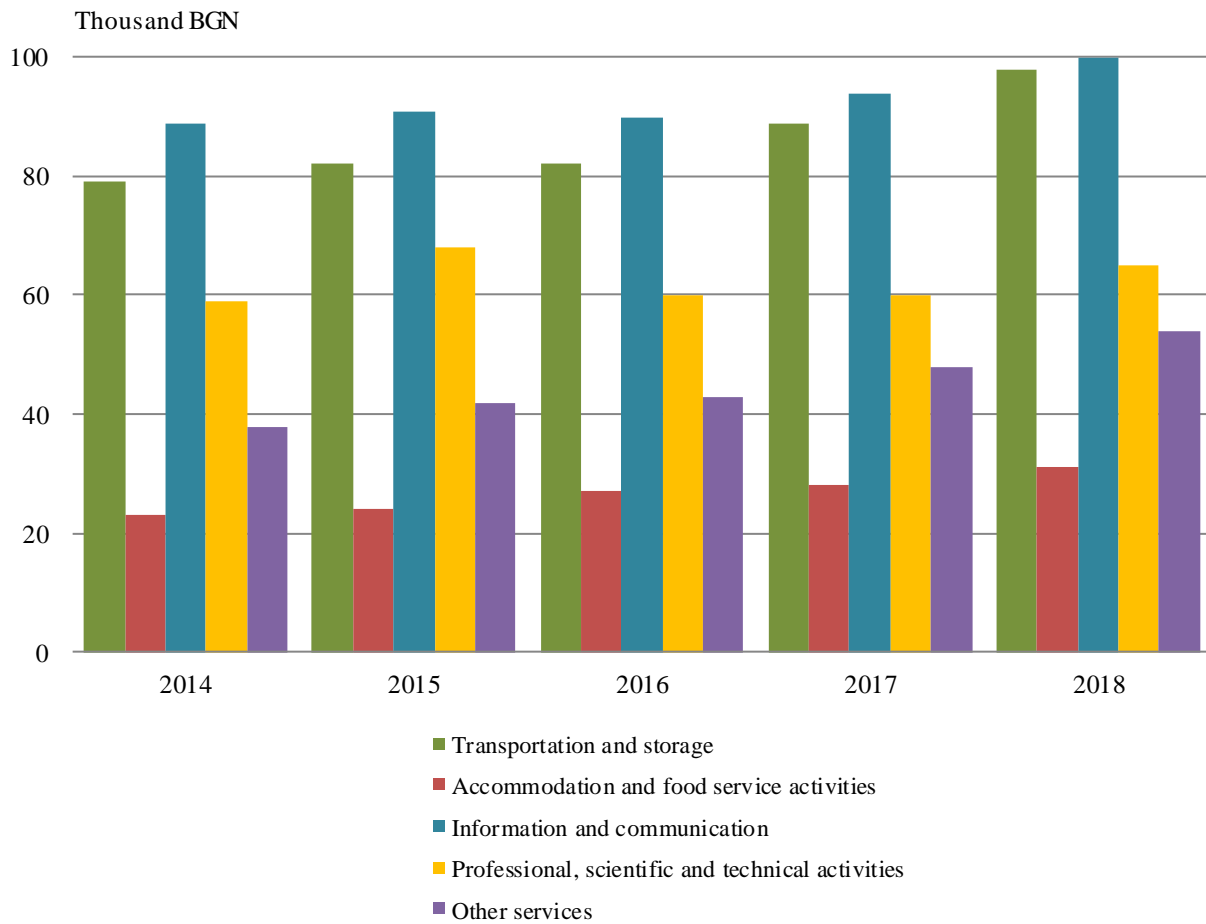
Figure 13. Percentage share of enterprises by type of services and by years





At current prices, in the service sector in 2018 was generated production value of 55 989 million BGN that formed 31.0% of the total production value of non-financial enterprises. This sector employed 849 006 persons in 2018 or 38.5% of the total number of persons employed in non-financial enterprises.

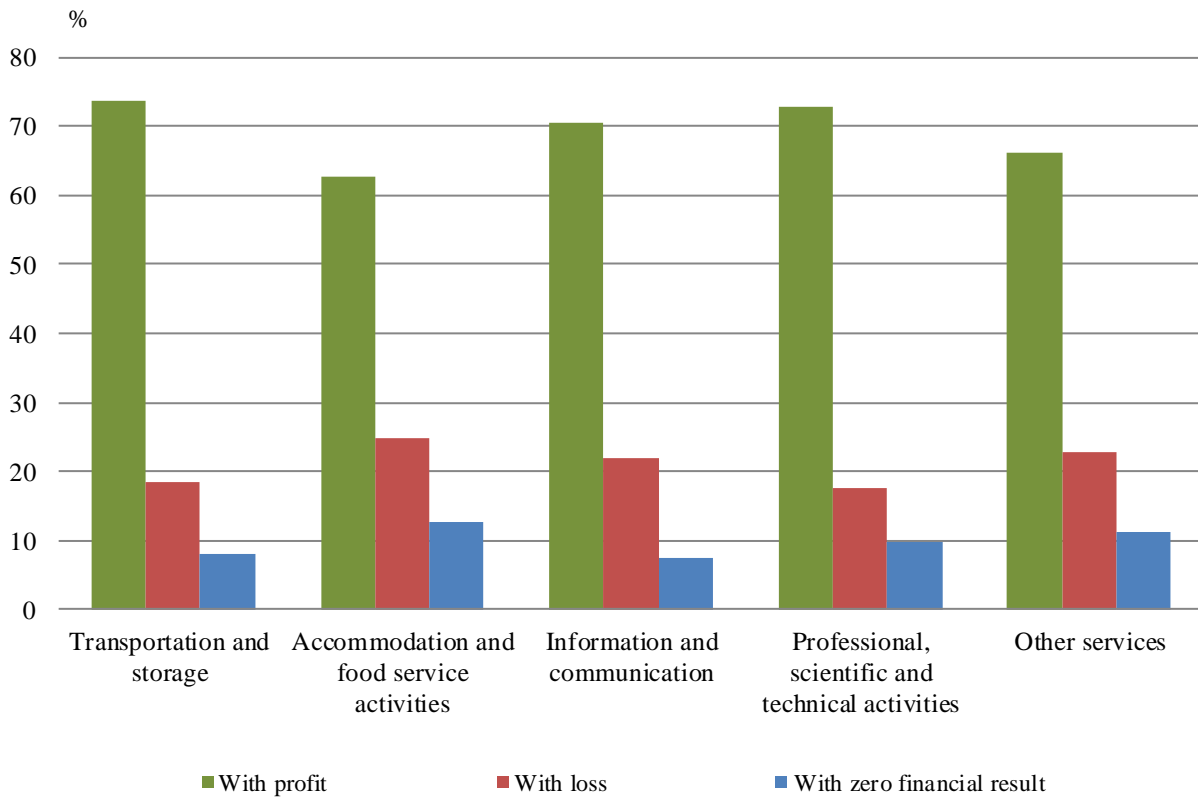
Figure 14. Production value per employee by type of services and by years





The service sector finished 2018 with a positive financial result of 6 367 million BGN and 28.4% of that result were realized by ‘Professional, scientific and technical activities’.

Figure 15. Percentage share of service enterprises according to the financial result for 2018





Methodological notes

Coverage - all sections by NACE Rev. 2 with the exception of 'Financial and insurance activities', 'Public administration and defence, compulsory social security', 'Activities of membership organisations' and 'Activities of households'.

Number of enterprises - all non-financial enterprises, which were active during whole or part of the reference year and have submitted their annual reports in the National statistical Institute and/or National Revenue Agency.

Turnover - the value of all revenue from sales of own products, goods bought and sold in the same condition, services provided and raw materials sold, including accrued excise duties, which are invoiced during the reference period. It does not include the revenue from sales of fixed assets, the income from financing, the financial and the extraordinary revenue. The value of turnover does not include accrued taxes on the type of value added tax (VAT) which are charged to the end user.

Production value - the value of turnover, reduced by the balance sheet of assets sold without own fixed assets. The changes in stocks of products and work in progress, as well as the costs incurred to acquire the assets by economic means are also included.

Value added at factor cost - the production value, reduced by the amount of the excise duties and operating expenses, excluding those for the personnel and for depreciation, and increased by the income from financing.

Financial result - the difference between the profit and the loss for a given aggregation level.

Number of persons employed - all persons employed working in a given enterprise on full or part-time, including seasonal workers, home workers, working owners, employees under contract for management and control, employees in civil contracts that do not work with another employer and unpaid family workers. It does not include those absent for an unlimited time, as well as those provided under contract by other companies.



Annex

Table 1

Economic indicators of non-financial enterprises for the period 2014 - 2018

| Economic activities by NACE Rev. 2 | Enterprises - number | | | | | Production value - million BGN ¹ | | | | |
|--|----------------------|---------------|---------------|---------------|---------------|---|---------------|---------------|---------------|---------------|
| | 2014 | 2015 | 2016 | 2017 | 2018* | 2014 | 2015 | 2016 | 2017 | 2018* |
| Non-financial enterprises | 383905 | 393460 | 404937 | 406310 | 413162 | 141784 | 153275 | 151284 | 168150 | 180626 |
| Agriculture, forestry and fishing | 17583 | 19055 | 19908 | 19880 | 19902 | 6209 | 6398 | 6320 | 6827 | 7343 |
| Mining and quarrying | 421 | 422 | 407 | 374 | 365 | 2432 | 2579 | 2497 | 2852 | 2757 |
| Manufacturing | 31150 | 31573 | 31962 | 31733 | 31887 | 52383 | 54235 | 55236 | 62623 | 65378 |
| Electricity, gas, steam and air conditioning supply | 2043 | 1945 | 1871 | 1786 | 1788 | 7275 | 7899 | 7648 | 7739 | 7000 |
| Water supply; sewerage, waste management and remediation activities | 810 | 838 | 872 | 826 | 822 | 1355 | 1420 | 1482 | 1553 | 1664 |
| Construction | 19869 | 20377 | 20533 | 20370 | 20924 | 14945 | 17853 | 11559 | 13452 | 15758 |
| Wholesale and retail trade; repair of motor vehicles and motorcycles | 140650 | 140566 | 142830 | 142174 | 142714 | 18349 | 19958 | 21154 | 23046 | 24737 |
| Transportation and storage | 20623 | 21543 | 23006 | 23355 | 23441 | 12115 | 12775 | 13443 | 14784 | 16189 |
| Accommodation and food service activities | 26808 | 27270 | 27456 | 27299 | 27304 | 2929 | 3042 | 3549 | 3879 | 4216 |
| Information and communication | 11124 | 12042 | 13063 | 13700 | 14496 | 6917 | 7694 | 8394 | 9293 | 10556 |
| Real estate activities | 22538 | 23216 | 23635 | 23280 | 24017 | 2340 | 2591 | 2890 | 3571 | 4072 |
| Professional, scientific and technical activities | 40670 | 42698 | 44749 | 45309 | 46914 | 5475 | 6551 | 6208 | 6407 | 7197 |
| Administrative and support service activities | 10060 | 10636 | 11323 | 11579 | 11875 | 3024 | 3349 | 3634 | 4056 | 4573 |
| Education | 3203 | 3351 | 3499 | 3761 | 3948 | 260 | 256 | 264 | 293 | 356 |
| Human health and social work activities | 13503 | 13625 | 13847 | 13925 | 14135 | 3107 | 3242 | 3484 | 3840 | 4223 |
| Arts, entertainment and recreation | 4711 | 5033 | 5555 | 5842 | 6208 | 2251 | 2937 | 3034 | 3318 | 3838 |
| Repair of computers and communication equipment; other personal service activities | 18139 | 19270 | 20421 | 21117 | 22422 | 418 | 496 | 488 | 617 | 769 |



Table 1

Economic indicators of non-financial enterprises for the period 2014 - 2018

(Continued and end)

| Economic activities by NACE Rev. 2 | Value added - million BGN ¹ | | | | | Persons employed - number | | | | |
|--|--|--------------|--------------|--------------|--------------|---------------------------|----------------|----------------|----------------|----------------|
| | 2014 | 2015 | 2016 | 2017 | 2018* | 2014 | 2015 | 2016 | 2017 | 2018* |
| Non-financial enterprises | 43913 | 50094 | 54033 | 59980 | 63970 | 2075598 | 2101095 | 2156511 | 2193508 | 2207549 |
| Agriculture, forestry and fishing | 2522 | 2425 | 2636 | 2947 | 3058 | 84890 | 85988 | 87768 | 86888 | 87006 |
| Mining and quarrying | 1151 | 1153 | 1100 | 1419 | 1330 | 23954 | 24862 | 23963 | 21843 | 21516 |
| Manufacturing | 10394 | 12151 | 13953 | 15189 | 15154 | 526548 | 535278 | 539111 | 546441 | 542818 |
| Electricity, gas, steam and air conditioning supply | 2540 | 3135 | 3409 | 3537 | 3633 | 32425 | 31590 | 31926 | 31549 | 31566 |
| Water supply; sewerage, waste management and remediation activities | 677 | 739 | 753 | 798 | 835 | 32335 | 32864 | 33031 | 32332 | 31890 |
| Construction | 2673 | 3308 | 2680 | 3112 | 3645 | 142252 | 142495 | 137468 | 140936 | 144851 |
| Wholesale and retail trade; repair of motor vehicles and motorcycles | 8530 | 9831 | 10349 | 11397 | 12164 | 481259 | 477886 | 490658 | 496406 | 498896 |
| Transportation and storage | 3548 | 3979 | 4267 | 4573 | 4857 | 152826 | 156399 | 163141 | 165912 | 164648 |
| Accommodation and food service activities | 1197 | 1321 | 1548 | 1798 | 1878 | 127844 | 127781 | 133011 | 137778 | 138131 |
| Information and communication | 3582 | 3900 | 4563 | 5208 | 6003 | 78020 | 84713 | 93216 | 99214 | 105328 |
| Real estate activities | 826 | 1078 | 1174 | 1540 | 1923 | 33620 | 33190 | 35371 | 36758 | 37794 |
| Professional, scientific and technical activities | 2337 | 2694 | 2776 | 3088 | 3423 | 93300 | 96108 | 103044 | 106432 | 109966 |
| Administrative and support service activities | 1262 | 1427 | 1669 | 1931 | 2178 | 99933 | 102274 | 107709 | 109379 | 110086 |
| Education | 131 | 133 | 142 | 160 | 197 | 9715 | 9640 | 10471 | 11344 | 11685 |
| Human health and social work activities | 1777 | 1836 | 1960 | 2157 | 2413 | 104167 | 105123 | 106667 | 107165 | 107329 |
| Arts, entertainment and recreation | 581 | 790 | 832 | 864 | 965 | 21642 | 22778 | 24664 | 26462 | 26615 |
| Repair of computers and communication equipment; other personal service activities | 185 | 194 | 222 | 262 | 314 | 30868 | 32126 | 35292 | 36669 | 37424 |

¹ Data at current prices.

* Preliminary data.



Table 2

Financial results of non-financial enterprises for the period 2014 - 2018

| Economic activities by NACE Rev. 2 | Financial result - million BGN ¹ | | | | |
|--|---|--------------|--------------|--------------|--------------|
| | 2014 | 2015 | 2016 | 2017 | 2018* |
| Non-financial enterprises | 6389 | 11253 | 13457 | 16726 | 17035 |
| Agriculture, forestry and fishing | 882 | 746 | 836 | 1116 | 1074 |
| Mining and quarrying | 301 | 271 | 239 | 293 | 365 |
| Manufacturing | 1984 | 2838 | 3771 | 4697 | 3447 |
| Electricity, gas, steam and air conditioning supply | -358 | 298 | 412 | 453 | 320 |
| Water supply; sewerage, waste management and remediation activities | 88 | 156 | 119 | 153 | 151 |
| Construction | 777 | 956 | 446 | 829 | 948 |
| Wholesale and retail trade; repair of motor vehicles and motorcycles | 2284 | 3259 | 3584 | 4118 | 4363 |
| Transportation and storage | 689 | 826 | 929 | 819 | 931 |
| Accommodation and food service activities | -12 | 123 | 217 | 318 | 261 |
| Information and communication | -676 | 450 | 702 | 760 | 1070 |
| Real estate activities | -687 | -481 | -91 | 531 | 1066 |
| Professional, scientific and technical activities | 853 | 1263 | 1346 | 1712 | 1806 |
| Administrative and support service activities | -203 | -80 | 280 | 159 | 336 |
| Education | 40 | 28 | 21 | 22 | 24 |
| Human health and social work activities | 238 | 217 | 198 | 256 | 328 |
| Arts, entertainment and recreation | 134 | 333 | 376 | 386 | 424 |
| Repair of computers and communication equipment; other personal service activities | 55 | 50 | 72 | 104 | 121 |

¹ Data at current prices.

* Preliminary data.


Table 3
Total Production, selected manufactured products for the period 2016 - 2018

| Products | Unit | 2016 | 2017 | 2018* | 2018/2017 (%) |
|---|----------------------|-------|-------|-------|---------------|
| Copper ores and concentrates | thous. t | 30158 | 30550 | 31258 | 102.3 |
| Lead, zinc and tin ores and concentrates | thous. t | 754 | 793 | 868 | 109.5 |
| Sausages and similar products of meat, offal or blood and food preparations based thereon (excluding liver sausages and prepared meals and dishes) | thous. t | 97 | 100 | 100 | 100.0 |
| Refined sunflower-seed and safflower oil and their fractions (excluding chemically modified) | thous. t | 121 | 135 | 161 | 119.3 |
| Jams, marmalades, fruit jellies, purees and pastes | t | 11784 | 13138 | 11514 | 87.6 |
| Uncooked pasta (excluding containing eggs, stuffed or otherwise prepared) | t | 10193 | 8785 | 9346 | 106.4 |
| Rice | t | 35540 | 45373 | 26653 | 58.7 |
| Spirits obtained from distilled grape wine or grape marc | thous. l alc 100% | 8388 | 11058 | 8086 | 73.1 |
| Beer made from malt (excluding non-alcoholic beer, beer containing ≤ 0.5% by volume of alcohol) | mln. l | 515 | 499 | 528 | 105.8 |
| Waters, with added sugar, other sweetening matter or flavoured, i.e. soft drinks (including mineral and aerated) | mln. l | 420 | 442 | 469 | 106.1 |
| Cigarettes containing tobacco or mixtures of tobacco and tobacco substitutes | mln. units | 21087 | 19733 | 14242 | 72.2 |
| Fabrics of cotton | thous. sq. m | 9899 | 7428 | 7352 | 99.0 |
| Particle board, of wood | thous. cub. m | 554 | 599 | 609 | 101.7 |
| Toothpaste | thous. units | 82669 | 80263 | 79506 | 99.1 |
| Shampoos | t | 5711 | 5562 | 6206 | 111.6 |
| Non-refractory clay building bricks | thous. cub. m | 560 | 619 | 605 | 97.7 |
| Portland cement | thous. t | 1969 | 2107 | 2308 | 109.5 |
| Quicklime, slaked lime and hydraulic lime | thous. t | 1 530 | 1 506 | 1 545 | 102.6 |
| Ready-mixed concrete | thous. t | 8398 | 9036 | 10785 | 119.4 |
| Electrical instantaneous or storage water heaters and immersion heaters | thous. units | 912 | 1052 | 1088 | 103.4 |
| Self-propelled fork-lift trucks powered by an electric motor, with a lifting height ≥ 1 m | units | 115 | 121 | 199 | 164.5 |
| Self-propelled trucks fitted with lifting or handling equipment, non-powered by an electric motor | units | 157 | 132 | 167 | 126.5 |
| Domestic electric cookers with at least an oven and a hob | units | 33894 | 31314 | 26757 | 85.4 |
| Accounting machines and similar machines incorporating a calculating device; ticket-issuing machines; automatic cash register; word - processing machines (without typewriters) | thous. units | 319 | 264 | 753 | 285.2 |
| Lead-acid accumulators for starting piston engines | thous. units | 3346 | 2677 | 2695 | 100.7 |
| Bicycles | thous. units | 918 | 770 | 739 | 96.0 |

* 2018 data is preliminary and sample-based (on the basis of an annual sample).