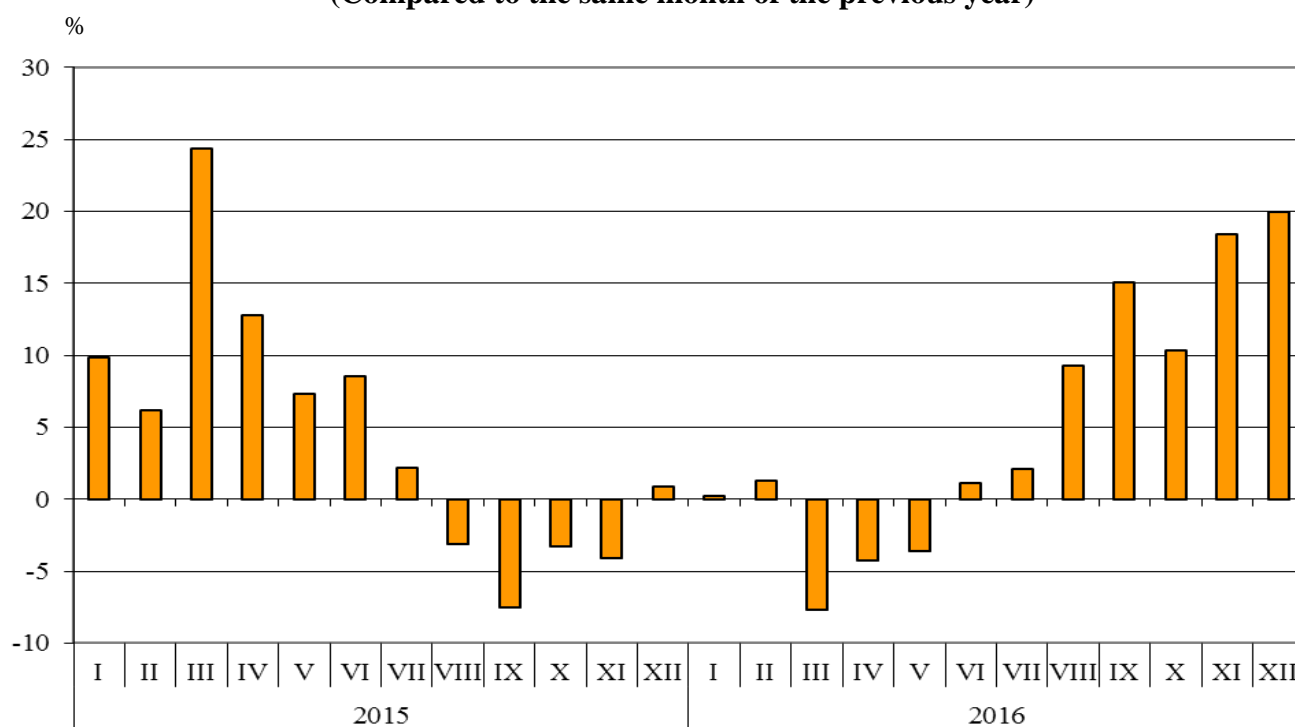




FOREIGN TRADE OF BULGARIA IN 2016 - FINAL DATA

In 2016 the **exported goods** were for 47 186.3 Million BGN and compared to 2015 the exports increased by 5.0% (Annex, Table 1 and 2). In comparing monthly data for 2016 with data for the corresponding month of the previous year the highest growth in exports was observed in December (20.0%), while the largest fall - in March (7.7%).

**Figure 1. Nominal value¹ change of exports in the period 2015 - 2016
(Compared to the same month of the previous year)**

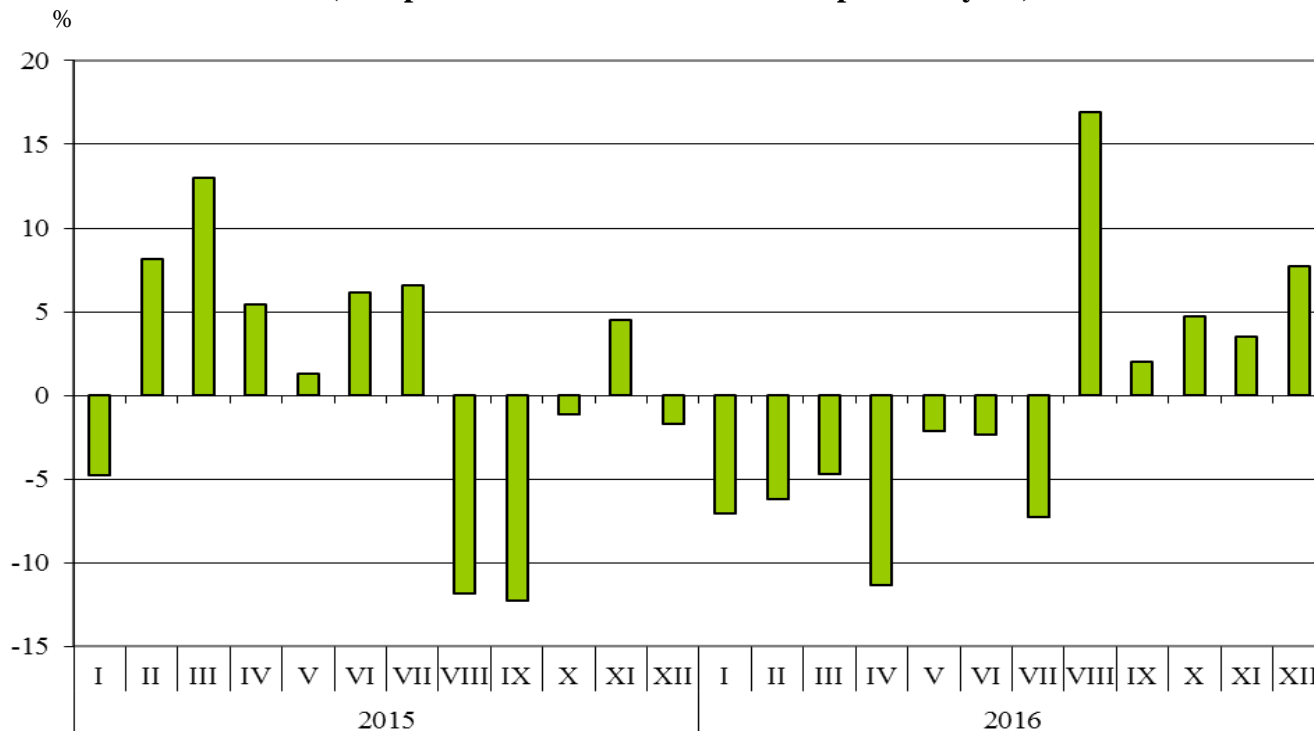


The imported goods in 2016 were for 51 206.2 Million BGN (at CIF prices) or 0.7% less than in the previous year (Annex, Table 1 and 2). Analyzing the monthly data for the imports in 2016 and the corresponding ones for 2015, the biggest increase was observed in August (16.9%), and the biggest decrease in April (11.4%).

¹ Value changes at current prices.



**Figure 2. Nominal value¹ change of imports in the period 2015 - 2016
(Compared to the same month of the previous year)**



Foreign trade balance (exports FOB - import CIF) was negative in 2016 and amounted to 4 019.9 Million BGN, which was 2 579.6 Million BGN less than the balance in 2015 (Annex, Table 1 and 2). At FOB/FOB prices (after elimination of transport and insurance costs on imports) the negative balance in 2016 added up to 782.7 Million BGN.

The **exports** of Bulgaria in 2016 distributed according to the **Standard International Trade Classification** showed that the largest growth was registered in the section 'Miscellaneous manufactured articles'² (20.0%). The most notable fall was reported in the section 'Mineral fuel, lubricants and related materials' (12.0%) (Annex, Table 4).

In **imports** the largest increase was recorded in the section 'Miscellaneous manufactured articles' (11.4%). The most notable decrease was reported in the section 'Mineral fuel, lubricants and related materials' (20.7%).

¹ Value changes at current prices.

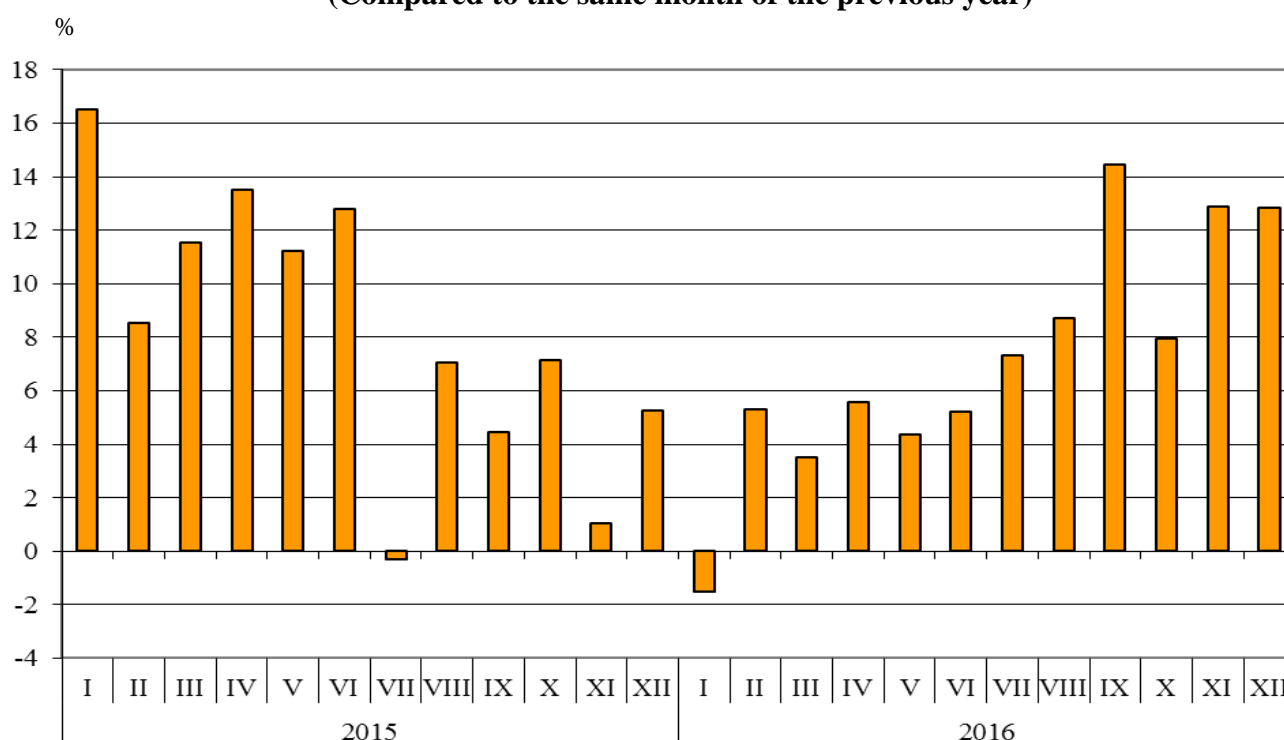
² The section includes the following divisions: Prefabricated buildings; sanitary, plumbing, heating and lighting fixtures and fittings, Furniture and parts thereof; bedding, mattresses, mattress supports, cushions and similar stuffed furnishings, Travel goods, handbags and similar containers, Articles of apparel and clothing accessories, Footwear, Professional, scientific and controlling instruments and apparatus, Photographic apparatus, equipment and supplies and optical goods, n.e.s.; watches and clocks, Miscellaneous manufactured articles, n.e.s.



Bulgarian trade with EU

In 2016 the **exports** of Bulgaria to the **EU countries** increased by 7.3% compared to the previous year and amounted to 31 157.6 Million BGN (Annex, Table 1 and 2). Main trade partners of Bulgaria were Germany, Italy, Romania, Greece, France and Spain which accounted for 68.0% from the exports to the EU (Annex, Table 3).

**Figure 3. Nominal value¹ change of exports to EU in the period 2015 - 2016
(Compared to the same month of the previous year)**

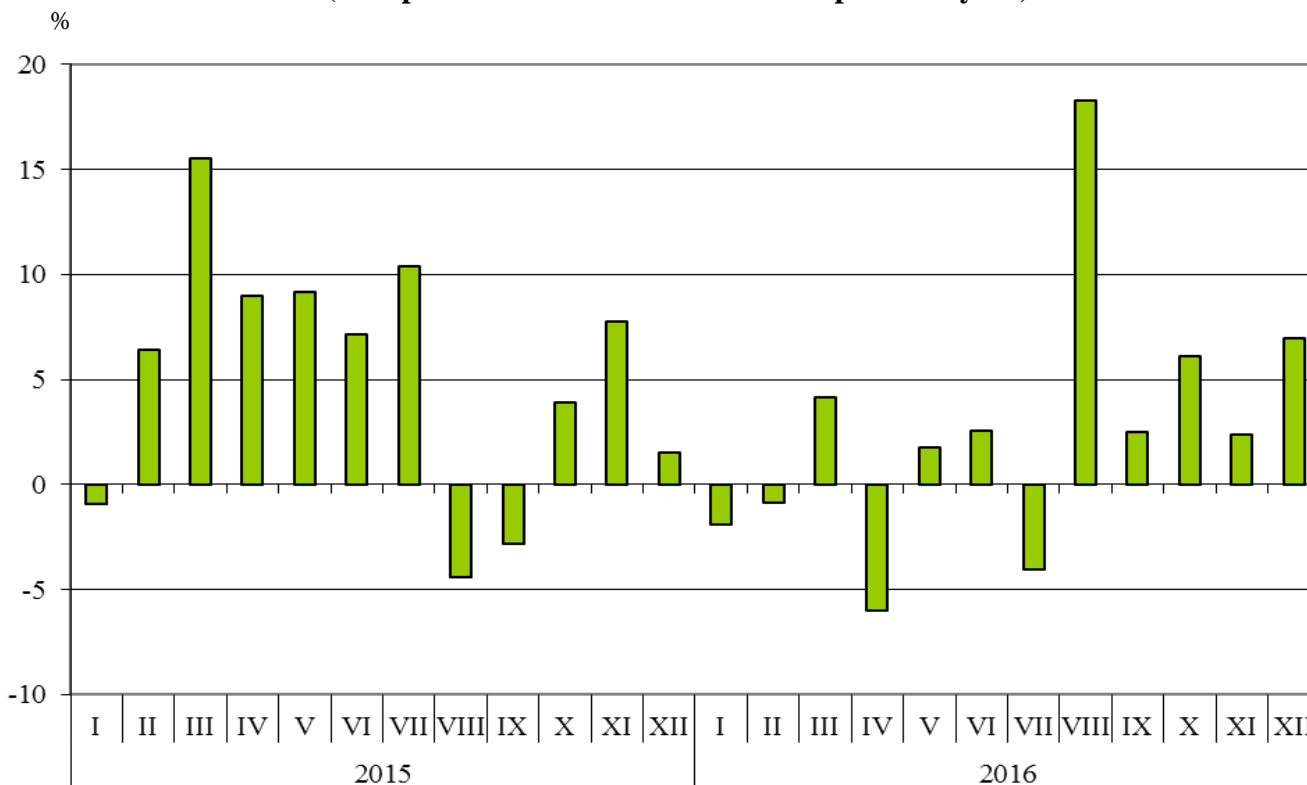


The Bulgarian **imports** from the **EU countries** in 2016 increased by 2.5% compared to the previous year and added up to 33 989.3 Million BGN (Annex, Table 1 and 2). The most essential amounts were reported for the goods imported from Germany, Italy, Romania, Greece and Poland which represent 55.4% from the imports from the EU.

¹ Value changes at current prices.



**Figure 4. Nominal value¹ change of imports from EU in the period 2015 - 2016
(Compared to the same month of the previous year)**



Foreign trade balance (exports FOB - import CIF) of Bulgaria with the **EU countries** was negative and amounted to 2 831.7 Million BGN in 2016 (Annex, Table 1).

The **exports** of Bulgaria to the **EU** distributed according to the **Standard International Trade Classification** showed that in 2016 compared to 2015 the largest increase was observed in the section 'Beverages and tobacco' (28.0%) (Annex, Table 4). The most notable decrease was recorded in the section 'Mineral fuel, lubricants and related materials' (13.9%).

The largest growth in the **imports** from the **EU** was observed in section 'Beverages and tobacco' (9.5%), while the most notable fall was observed in section 'Crude materials, inedible (except fuel)' (13.2%).

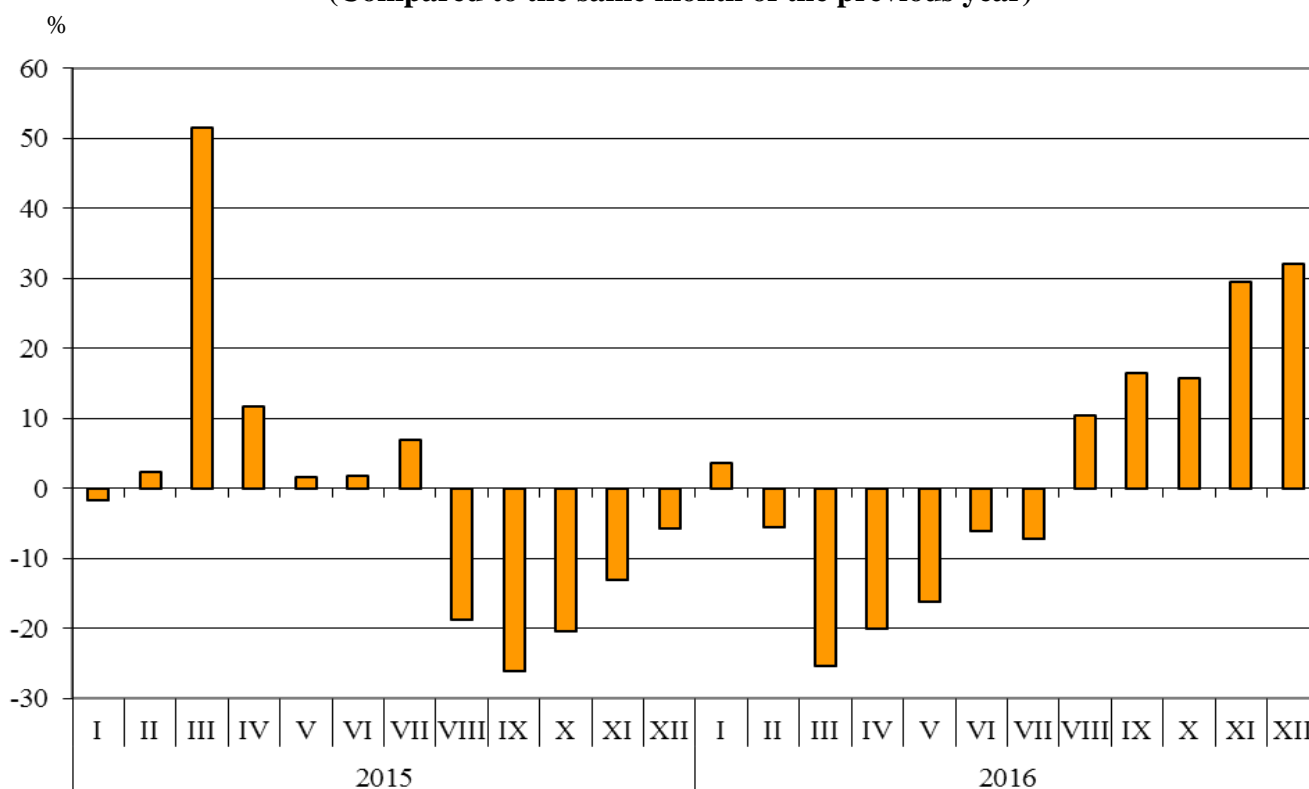
¹ Value changes at current prices.



Bulgarian trade with third countries

In 2016 the Bulgarian **exports to third countries** increased by 0.8% compared to the previous year and added up to 16 028.7 Million BGN (Annex, Table 1 and 2). Leading trade partners of Bulgaria were Turkey, China, the Former Yugoslav Republic of Macedonia, the Russian Federation, Serbia, the United States and Egypt which accounted for 50.8% of the total exports to non EU countries (Annex, Table.3).

**Figure 5. Nominal value¹ change of exports to non EU countries
in the period 2015 - 2016
(Compared to the same month of the previous year)**

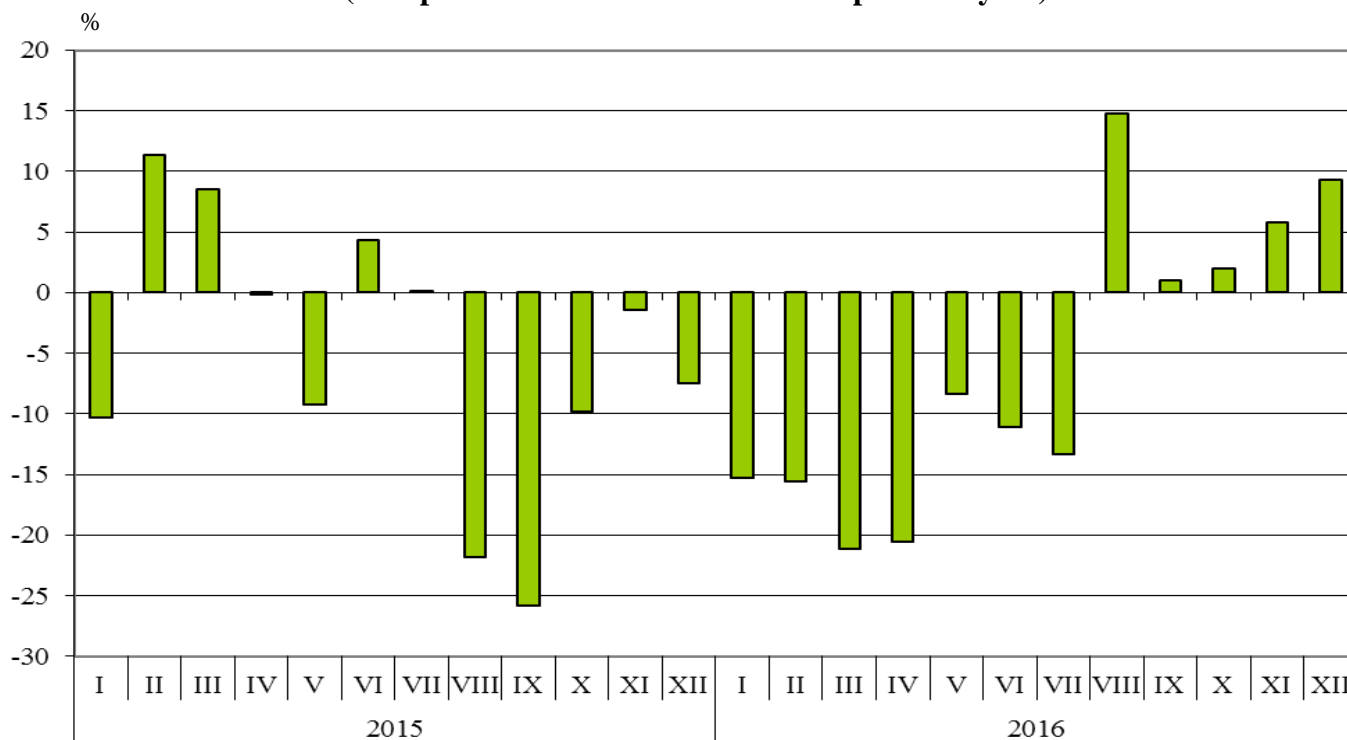


Bulgarian **imports from third countries** in 2016 decreased by 6.4%, compared to the previous year, and amounted to 17 216.9 Million BGN (Annex, Table 1 and 2). The largest amounts were reported for the goods imported from the Russian Federation, Turkey, China, Ukraine and Serbia whose share amounts to 65.9% of the total exports from non EU countries.

¹ Value changes at current prices.



**Figure 6. Nominal value¹ change of imports to non EU countries
 in the period 2015 - 2016
 (Compared to the same month of the previous year)**



Foreign trade balance of Bulgaria (export FOB - import CIF) with **third countries** was negative and added up to 1 188.2 Million BGN in 2016 (Annex, Table 1).

¹ Value changes at current prices.

Exports, imports and trade balance of Bulgaria in 2015 and 2016 by months
Final data

Table 1

(Million BGN)

Months/Periods	Exports - FOB			Imports - CIF			Imports - FOB ¹			Trade balance - FOB/CIF			Trade balance - FOB/FOB ¹		
	Total	EU	Non-EU	Total	EU	Non-EU	Total	EU	Non-EU	Total	EU	Non-EU	Total	EU	Non-EU
I.2015	3404.9	2296.0	1108.9	3767.8	2312.0	1455.8	3579.5	2199.6	1379.9	-362.9	-16.0	-346.9	-174.6	96.4	-271.0
II.2015	3427.4	2171.8	1255.6	4104.7	2624.7	1480.0	3904.3	2499.7	1404.6	-677.3	-452.9	-224.4	-476.9	-327.9	-149.0
III.2015	3971.6	2422.7	1548.9	4447.0	2886.1	1560.9	4239.8	2753.7	1486.1	-475.4	-463.4	-12.0	-268.2	-331.0	62.8
I - III.2015	10803.9	6890.5	3913.4	12319.5	7822.8	4496.7	11723.6	7453.0	4270.6	-1515.6	-932.3	-583.3	-919.7	-562.5	-357.2
IV.2015	3912.2	2403.4	1508.8	4537.2	2866.8	1670.4	4313.3	2728.0	1585.3	-625.0	-463.4	-161.6	-401.1	-324.6	-76.5
V.2015	3755.0	2297.2	1457.8	4185.7	2583.3	1602.4	3984.9	2464.5	1520.4	-430.7	-286.1	-144.6	-229.9	-167.3	-62.6
VI.2015	4022.8	2562.3	1460.5	4423.1	2830.3	1592.8	4213.6	2699.1	1514.5	-400.3	-268.0	-132.3	-190.8	-136.8	-54.0
IV - VI.2015	11690.0	7262.9	4427.1	13146.0	8280.4	4865.6	12511.8	7891.6	4620.2	-1456.0	-1017.5	-438.5	-821.8	-628.7	-193.1
I - VI.2015	22493.9	14153.4	8340.5	25465.5	16103.2	9362.3	24235.4	15344.6	8890.8	-2971.6	-1949.8	-1021.8	-1741.5	-1191.2	-550.3
VII.2015	4105.0	2629.0	1476.0	4685.9	3047.1	1638.8	4455.2	2900.6	1554.6	-580.9	-418.1	-162.8	-350.2	-271.6	-78.6
VIII.2015	3682.9	2464.8	1218.1	3798.5	2356.9	1441.6	3617.8	2250.3	1367.5	-115.6	107.9	-223.5	65.1	214.5	-149.4
IX.2015	3623.7	2484.2	1139.5	4098.5	2674.4	1424.1	3905.4	2551.3	1354.1	-474.8	-190.2	-284.6	-281.7	-67.1	-214.6
VII - IX.2015	11411.6	7578.0	3833.6	12582.9	8078.4	4504.5	11978.4	7702.2	4276.2	-1171.3	-500.4	-670.9	-566.8	-124.2	-442.6
I - IX.2015	33905.5	21731.4	12174.1	38048.4	24181.6	13866.8	36213.8	23046.8	13167.0	-4142.9	-2450.2	-1692.7	-2308.3	-1315.4	-992.9
X.2015	3899.8	2688.2	1211.6	4613.8	3065.0	1548.8	4391.7	2918.4	1473.3	-714.0	-376.8	-337.2	-491.9	-230.2	-261.7
XI.2015	3690.6	2466.2	1224.4	4576.1	3045.0	1531.1	4331.4	2904.9	1426.5	-885.5	-578.8	-306.7	-640.8	-438.7	-202.1
XII.2015	3453.6	2163.6	1290.0	4310.7	2865.6	1445.1	4077.2	2732.6	1344.6	-857.1	-702.0	-155.1	-623.6	-569.0	-54.6
X - XII.2015	11044.0	7318.0	3726.0	13500.6	8975.6	4525.0	12800.3	8555.9	4244.4	-2456.6	-1657.6	-799.0	-1756.3	-1237.9	-518.4
I - XII.2015	44949.5	29049.4	15900.1	51549.0	33157.2	18391.8	49014.1	31602.7	17411.4	-6599.5	-4107.8	-2491.7	-4064.6	-2553.3	-1511.3

¹ By data of BNB for the transport costs.

Exports, imports and trade balance of Bulgaria in 2015 and 2016 by months
Final data

Table 1

(Continued and end)

(Million BGN)

Months/Periods	Exports - FOB			Imports - CIF			Imports - FOB ¹			Trade balance - FOB/CIF			Trade balance - FOB/FOB ¹		
	Total	EU	Non-EU	Total	EU	Non-EU	Total	EU	Non-EU	Total	EU	Non-EU	Total	EU	Non-EU
I.2016	3411.3	2261.2	1150.1	3501.5	2267.8	1233.7	3271.4	2121.9	1149.5	-90.2	-6.6	-83.6	139.9	139.3	0.6
II.2016	3471.9	2286.8	1185.1	3850.2	2601.3	1248.9	3613.4	2453.9	1159.5	-378.3	-314.5	-63.8	-141.5	-167.1	25.6
III.2016	3665.4	2507.8	1157.6	4237.1	3005.8	1231.3	3971.8	2825.6	1146.2	-571.7	-498.0	-73.7	-306.4	-317.8	11.4
I - III.2016	10548.6	7055.8	3492.8	11588.8	7874.9	3713.9	10856.6	7401.4	3455.2	-1040.2	-819.1	-221.1	-308.0	-345.6	37.6
IV.2016	3744.0	2537.4	1206.6	4021.8	2694.4	1327.4	3782.7	2547.3	1235.4	-277.8	-157.0	-120.8	-38.7	-9.9	-28.8
V.2016	3618.9	2397.6	1221.3	4096.9	2629.0	1467.9	3844.0	2481.4	1362.6	-478.0	-231.4	-246.6	-225.1	-83.8	-141.3
VI.2016	4068.4	2695.3	1373.1	4318.7	2902.4	1416.3	4050.8	2733.3	1317.5	-250.3	-207.1	-43.2	17.6	-38.0	55.6
IV - VI.2016	11431.3	7630.3	3801.0	12437.4	8225.8	4211.6	11677.5	7762.0	3915.5	-1006.1	-595.5	-410.6	-246.2	-131.7	-114.5
I - VI.2016	21979.9	14686.1	7293.8	24026.2	16100.7	7925.5	22534.1	15163.4	7370.7	-2046.3	-1414.6	-631.7	-554.2	-477.3	-76.9
VII.2016	4192.5	2821.3	1371.2	4344.2	2924.1	1420.1	4062.8	2746.7	1316.1	-151.7	-102.8	-48.9	129.7	74.6	55.1
VIII.2016	4024.8	2679.7	1345.1	4442.1	2787.3	1654.8	4140.6	2613.3	1527.3	-417.3	-107.6	-309.7	-115.8	66.4	-182.2
IX.2016	4170.7	2843.7	1327.0	4180.3	2742.0	1438.3	3917.9	2587.1	1330.8	-9.6	101.7	-111.3	252.8	256.6	-3.8
VII - IX.2016	12388.0	8344.7	4043.3	12966.6	8453.4	4513.2	12121.3	7947.1	4174.2	-578.6	-108.7	-469.9	266.7	397.6	-130.9
I - IX.2016	34367.9	23030.8	11337.1	36992.8	24554.1	12438.7	34655.4	23110.5	11544.9	-2624.9	-1523.3	-1101.6	-287.5	-79.7	-207.8
X.2016	4303.9	2901.8	1402.1	4831.3	3252.1	1579.2	4517.7	3042.3	1475.4	-527.4	-350.3	-177.1	-213.8	-140.5	-73.3
XI.2016	4370.5	2783.9	1586.6	4737.6	3117.7	1619.9	4439.2	2937.4	1501.8	-367.1	-333.8	-33.3	-68.7	-153.5	84.8
XII.2016	4144.0	2441.1	1702.9	4644.5	3065.4	1579.1	4356.7	2882.3	1474.4	-500.5	-624.3	123.8	-212.7	-441.2	228.5
X - XII.2016	12818.4	8126.8	4691.6	14213.4	9435.2	4778.2	13313.6	8862.0	4451.6	-1395.0	-1308.4	-86.6	-495.2	-735.2	240.0
I - XII.2016	47186.3	31157.6	16028.7	51206.2	33989.3	17216.9	47969.0	31972.5	15996.5	-4019.9	-2831.7	-1188.2	-782.7	-814.9	32.2

¹ By data of BNB for the transport costs.



Table 2

Value changes of exports and imports of Bulgaria in 2016 compared to the same period of the previous year

(Per cent)

Months/Periods	Exports - FOB			Imports - CIF			Imports - FOB		
	Total	EU	Non-EU	Total	EU	Non-EU	Total	EU	Non-EU
I	0.2	-1.5	3.7	-7.1	-1.9	-15.3	-8.6	-3.5	-16.7
II	1.3	5.3	-5.6	-6.2	-0.9	-15.6	-7.5	-1.8	-17.4
III	-7.7	3.5	-25.3	-4.7	4.1	-21.1	-6.3	2.6	-22.9
I - III	-2.4	2.4	-10.7	-5.9	0.7	-17.4	-7.4	-0.7	-19.1
IV	-4.3	5.6	-20.0	-11.4	-6.0	-20.5	-12.3	-6.6	-22.1
V	-3.6	4.4	-16.2	-2.1	1.8	-8.4	-3.5	0.7	-10.4
VI	1.1	5.2	-6.0	-2.4	2.5	-11.1	-3.9	1.3	-13.0
IV - VI	-2.2	5.1	-14.1	-5.4	-0.7	-13.4	-6.7	-1.6	-15.3
I - VI	-2.3	3.8	-12.5	-5.7	0.0	-15.3	-7.0	-1.2	-17.1
VII	2.1	7.3	-7.1	-7.3	-4.0	-13.3	-8.8	-5.3	-15.3
VIII	9.3	8.7	10.4	16.9	18.3	14.8	14.5	16.1	11.7
IX	15.1	14.5	16.5	2.0	2.5	1.0	0.3	1.4	-1.7
VII - IX	8.6	10.1	5.5	3.0	4.6	0.2	1.2	3.2	-2.4
I - IX	1.4	6.0	-6.9	-2.8	1.5	-10.3	-4.3	0.3	-12.3
X	10.4	7.9	15.7	4.7	6.1	2.0	2.9	4.2	0.1
XI	18.4	12.9	29.6	3.5	2.4	5.8	2.5	1.1	5.3
XII	20.0	12.8	32.0	7.7	7.0	9.3	6.9	5.5	9.7
X - XII	16.1	11.1	25.9	5.3	5.1	5.6	4.0	3.6	4.9
I - XII	5.0	7.3	0.8	-0.7	2.5	-6.4	-2.1	1.2	-8.1

Table 3

Exports, imports and trade balance by groups of countries and main partner countries¹ of Bulgaria in 2015 and 2016

Countries and groups of countries	Exports - FOB			Imports - CIF			Trade balance - FOB/CIF	
	2015	2016	Change compared to the same period of the previous year - %	2015	2016	Change compared to the same period of the previous year - %	2015	2016
	Million BGN			Million BGN			Million BGN	
Total	44949.5	47186.3	5.0	51549.0	51206.2	-0.7	-6599.5	-4019.9
EU	29049.4	31157.6	7.3	33157.2	33989.3	2.5	-4107.8	-2831.7
Austria	804.0	898.7	11.8	1389.9	1412.4	1.6	-585.9	-513.7
Belgium	1658.0	1264.5	-23.7	1186.5	1188.4	0.2	471.5	76.1
Croatia	187.1	218.7	16.9	116.5	123.0	5.6	70.6	95.7
Cyprus	299.5	160.4	-46.4	79.6	57.9	-27.3	219.9	102.5
Czech Republic	769.8	787.2	2.3	1095.2	1086.9	-0.8	-325.4	-299.7
Denmark	245.5	283.3	15.4	243.6	233.9	-4.0	1.9	49.4
Estonia	40.7	42.7	4.9	22.8	32.3	41.7	17.9	10.4
Finland	117.4	80.8	-31.2	118.4	132.1	11.6	-1.0	-51.3
France	1908.8	2079.8	9.0	1629.8	1611.8	-1.1	279.0	468.0
Germany	5659.6	6291.2	11.2	6640.6	6694.1	0.8	-981.0	-402.9
Greece	2954.7	3228.4	9.3	2479.7	2462.4	-0.7	475.0	766.0
Hungary	685.4	764.6	11.6	1909.4	1948.9	2.1	-1224.0	-1184.3
Ireland	58.5	66.3	13.3	159.1	192.1	20.7	-100.6	-125.8
Italy	4180.2	4245.3	1.6	3902.5	4049.5	3.8	277.7	195.8
Latvia	50.0	53.5	7.0	56.4	69.2	22.7	-6.4	-15.7
Lithuania	97.4	111.9	14.9	86.1	99.4	15.4	11.3	12.5
Luxembourg	10.6	12.0	13.2	155.9	170.8	9.6	-145.3	-158.8
Malta	100.9	73.2	-27.5	19.8	33.5	69.2	81.1	39.7
Netherlands	1057.1	1248.0	18.1	1727.3	1868.3	8.2	-670.2	-620.3
Poland	1035.0	1145.7	10.7	1608.7	2066.2	28.4	-573.7	-920.5
Portugal	185.2	200.6	8.3	109.2	93.3	-14.6	76.0	107.3
Romania	3691.8	4048.3	9.7	3494.3	3548.7	1.6	197.5	499.6
Slovakia	330.7	321.9	-2.7	741.0	686.5	-7.4	-410.3	-364.6
Slovenia	360.7	386.6	7.2	341.3	396.2	16.1	19.4	-9.6
Spain	1038.3	1295.7	24.8	2362.9	2031.1	-14.0	-1324.6	-735.4
Sweden	297.3	355.4	19.5	318.0	322.8	1.5	-20.7	32.6
United Kingdom	1146.4	1156.2	0.9	942.4	1174.1	24.6	204.0	-17.9
Not specified	78.8	336.7	327.3	220.3	203.5	-7.6	-141.5	133.2

¹ Partner country:

- In case of exports (or dispatches) is the country (or Member State) of final destination of the goods.
- In case of imports (or arrivals) is the country (or Member State) of consignment of the goods.



Table 3

Exports, imports and trade balance by groups of countries and main partner countries¹ of Bulgaria in 2015 and 2016

(Continued)

Countries and groups of countries	Exports - FOB			Imports - CIF			Trade balance - FOB/CIF	
	2015	2016	Change compared to the same period of the previous year - %	2015	2016	Change compared to the same period of the previous year - %	2015	2016
	Million BGN			Million BGN			Million BGN	
Non EU countries	15900.1	16028.7	0.8	18391.8	17216.9	-6.4	-2491.7	-1188.2
CIS^{2,5}	1431.1	1334.7	-6.7	7308.1	5610.4	-23.2	-5877.0	-4275.7
of which:								
Kazakhstan	42.9	36.9	-14.0	48.8	33.6	-31.1	-5.9	3.3
Russian Federation	783.6	765.3	-2.3	6201.9	4570.0	-26.3	-5418.3	-3804.7
Ukraine	313.9	278.5	-11.3	916.2	801.5	-12.5	-602.3	-523.0
OECD^{3,5}	5466.7	5378.2	-1.6	4576.3	4774.8	4.3	890.4	603.4
of which:								
Canada	80.9	96.0	18.7	54.6	94.3	72.7	26.3	1.7
Israel	189.2	172.7	-8.7	73.3	99.0	35.1	115.9	73.7
Japan	75.7	80.0	5.7	165.3	186.0	12.5	-89.6	-106.0
Korea, Republic of	104.4	160.8	54.0	165.6	218.1	31.7	-61.2	-57.3
Turkey	3923.8	3694.9	-5.8	2924.9	3179.5	8.7	998.9	515.4
United States	718.2	693.5	-3.4	474.7	408.3	-14.0	243.5	285.2
EFTA^{4,5}	224.2	338.0	50.8	413.5	433.0	4.7	-189.3	-95.0
of which:								
Norway	47.4	68.7	44.9	32.6	45.3	39.0	14.8	23.4
Switzerland	174.7	266.5	52.5	377.3	384.2	1.8	-202.6	-117.7

¹ Partner country:

- In case of exports (or dispatches) is the country (or Member State) of final destination of the goods.

- In case of imports (or arrivals) is the country (or Member State) of consignment of the goods.

² CIS includes: Azerbaijan; Armenia; Belarus; Kazakhstan; Kyrgyz, Republic; Moldova, Republic of; Russian Federation; Tajikistan; Turkmenistan; Uzbekistan and Ukraine.

³ OECD includes: Australia; Virgin Islands (US); United States; Iceland; Canada; Mexico; New Zealand; Norway; Korea, Republic of; Turkey; Switzerland; Japan; Israel and Chile.

⁴ EFTA includes: Norway; Switzerland; Iceland and Liechtenstein.

⁵ Data have been revised due to technical error occurred in the calculation of the values of CIS, OECD and EFTA.

Table 3

Exports, imports and trade balance by groups of countries and main partner countries¹ of Bulgaria in 2015 and 2016

(Continued and end)

Countries and groups of countries	Exports - FOB			Imports - CIF			Trade balance - FOB/CIF	
	2015	2016	Change compared to the same period of the previous year - %	2015	2016	Change compared to the same period of the previous year - %	2015	2016
	Million BGN			Million BGN			Million BGN	
Countries not included in the upper groups								
Albania	111.6	127.2	14.0	38.0	31.1	-18.2	73.6	96.1
Bosnia and Herzegovina	118.1	130.4	10.4	58.9	84.9	44.1	59.2	45.5
Brazil	45.4	50.7	11.7	59.3	50.2	-15.3	-13.9	0.5
China	1049.5	914.5	-12.9	1894.6	2034.9	7.4	-845.1	-1120.4
Egypt	738.3	567.2	-23.2	201.4	709.7	252.4	536.9	-142.5
Former Yugoslav Republic of Macedonia	754.6	769.1	1.9	507.7	505.2	-0.5	246.9	263.9
Georgia	316.4	323.1	2.1	446.9	280.7	-37.2	-130.5	42.4
India	109.9	202.7	84.4	275.5	238.9	-13.3	-165.6	-36.2
Indonesia	99.1	67.0	-32.4	72.0	71.8	-0.3	27.1	-4.8
Iran, Islamic Republic of	244.5	134.0	-45.2	28.1	49.1	74.7	216.4	84.9
Peru	5.9	15.6	164.4	40.9	47.3	15.6	-35.0	-31.7
Serbia	820.0	743.4	-9.3	696.8	761.7	9.3	123.2	-18.3
Singapore	664.5	355.8	-46.5	54.7	54.8	0.2	609.8	301.0
South Africa	109.4	134.8	23.2	24.4	35.7	46.3	85.0	99.1
Syrian Arab Republic	46.2	35.7	-22.7	14.7	1.7	-88.4	31.5	34.0
Taiwan	41.4	50.2	21.3	216.4	219.7	1.5	-175.0	-169.5
United Arab Emirates	416.7	457.4	9.8	138.2	41.6	-69.9	278.5	415.8
Viet Nam	70.7	175.6	148.4	89.3	80.6	-9.7	-18.6	95.0

¹ Partner country:

- In case of exports (or dispatches) is the country (or Member State) of final destination of the goods.
- In case of imports (or arrivals) is the country (or Member State) of consignment of the goods.

Table 4

Exports, imports and trade balance of Bulgaria by sections of SITC, rev.4 in 2015 and 2016

Sections by SITC	Exports - FOB			Imports - CIF			Trade balance - FOB/CIF	
	2015	2016	Change compared to the same period of the previous year - %	2015	2016	Change compared to the same period of the previous year - %	2015	2016
	Million BGN			Million BGN			Million BGN	
Total	44949.5	47186.3	5.0	51549.0	51206.2	-0.7	-6599.5	-4019.9
of which EU	29049.4	31157.6	7.3	33157.2	33989.3	2.5	-4107.8	-2831.7
Food and live animals	4857.3	5399.5	11.2	3980.9	4149.8	4.2	876.4	1249.7
of which EU	3260.5	3746.5	14.9	3184.3	3315.4	4.1	76.2	431.1
Beverages and tobacco	823.9	810.9	-1.6	733.1	786.2	7.2	90.8	24.7
of which EU	288.2	368.8	28.0	585.1	640.4	9.5	-296.9	-271.6
Crude materials, inedible (except fuel)	2953.8	3134.3	6.1	4230.3	3696.8	-12.6	-1276.5	-562.5
of which EU	1850.8	2108.6	13.9	2453.2	2129.6	-13.2	-602.4	-21.0
Mineral fuel, lubricants and related materials	4859.5	4275.4	-12.0	8042.6	6377.6	-20.7	-3183.1	-2102.2
of which EU	1388.3	1195.5	-13.9	1448.9	1340.2	-7.5	-60.6	-144.7
Animals and vegetable oils, fats and waxes	471.7	483.4	2.5	177.9	181.7	2.1	293.8	301.7
of which EU	323.1	314.3	-2.7	122.2	132.1	8.1	200.9	182.2
Chemical and related products n.e.c.	4437.3	4732.6	6.7	7238.4	7609.5	5.1	-2801.1	-2876.9
of which EU	2576.5	3140.5	21.9	5533.0	6005.4	8.5	-2956.5	-2864.9
Manufactured goods classified chiefly by material	9968.6	9595.8	-3.7	8722.5	9177.5	5.2	1246.1	418.3
of which EU	6859.5	6617.5	-3.5	5458.3	5826.8	6.8	1401.2	790.7
Machinery and transport equipment	9400.8	10163.4	8.1	14006.2	14319.5	2.2	-4605.4	-4156.1
of which EU	6891.9	7383.9	7.1	11136.3	11102.6	-0.3	-4244.4	-3718.7
Miscellaneous manufactured articles	7058.2	8466.4	20.0	4137.9	4608.4	11.4	2920.3	3858.0
of which EU	5522.7	6195.4	12.2	2986.9	3243.3	8.6	2535.8	2952.1
Commodities and transactions n.e.c.	118.4	124.6	5.2	279.2	299.2	7.2	-160.8	-174.6
of which EU	87.9	86.6	-1.5	249.0	253.5	1.8	-161.1	-166.9