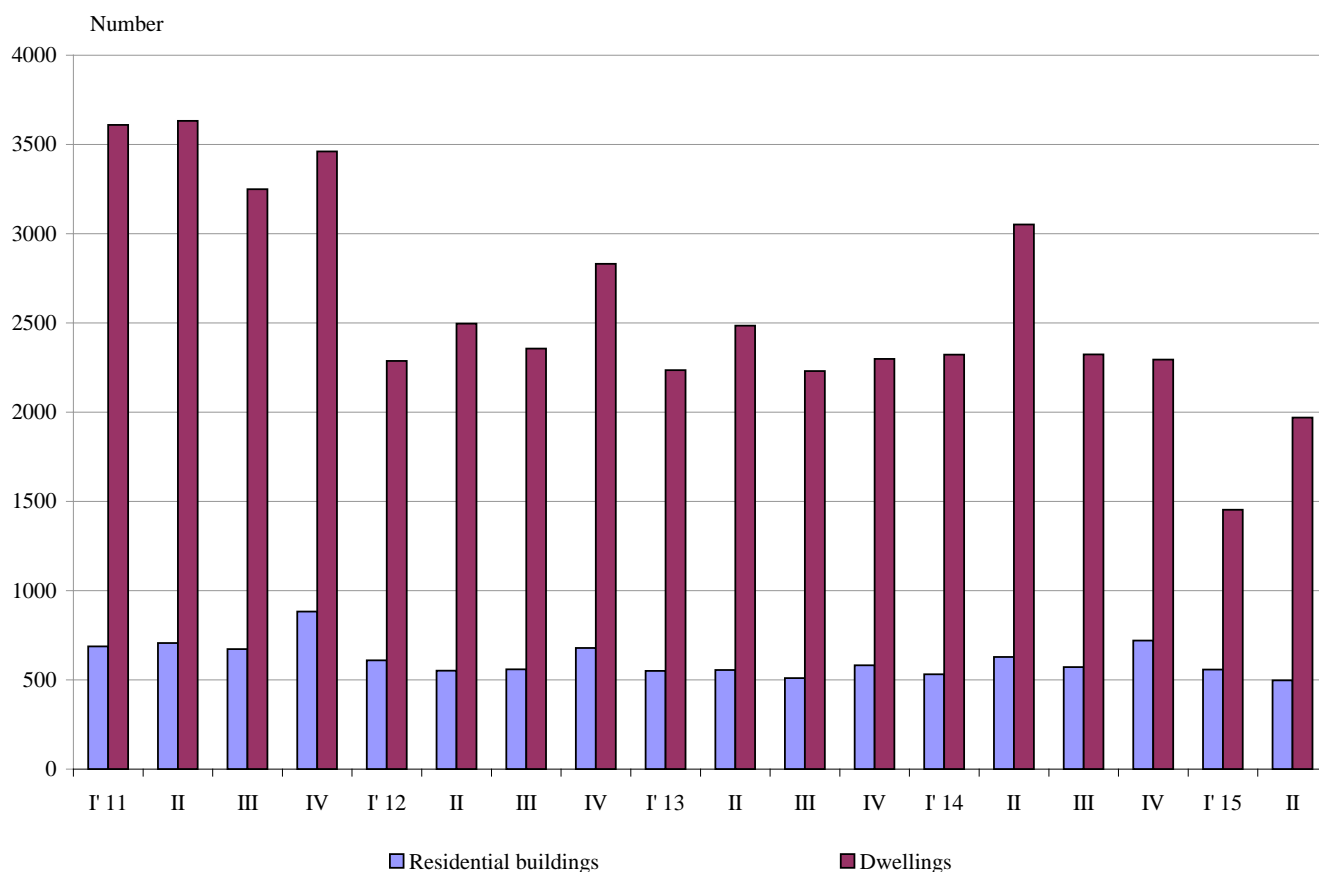




NEWLY BUILT RESIDENTIAL BUILDINGS AND DWELLINGS COMPLETED IN THE SECOND QUARTER OF 2015 (PRELIMINARY DATA)

According to preliminary data of the National Statistical Institute in the second quarter of 2015 the number of newly built residential buildings was 497 and the newly built dwellings in them was 1 970 (Annex, Table 1). Compared to the second quarter of 2014 the buildings were by 131 less (or by 20.9%) and the newly built dwellings in them decreased by 1 082 or by 35.5% (Figure 1).

Figure 1. Newly built residential buildings and dwellings completed by quarters



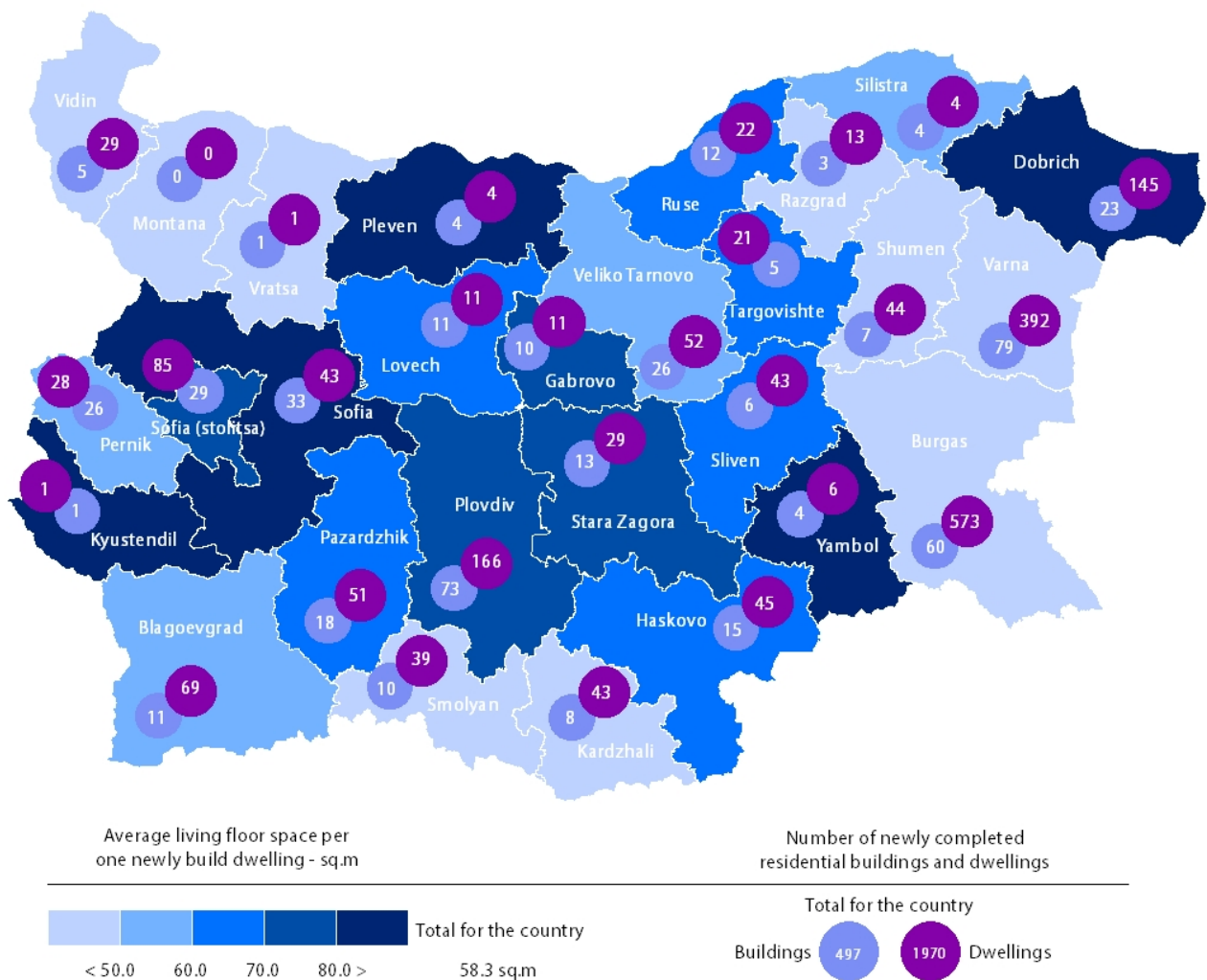
In the second quarter of 2015 70.4% of the newly built residential buildings were with steel-concrete construction, 24.8% with solid structure, 3.0% with 'other' and 1.8% with panel.



The newly built residential buildings distribution by type shows that highest is the relative share of houses (65.8%) followed by blocks of flats (15.7%). As compared with the second quarter of 2014 an increase of the number of newly built country houses and hostels only was observed (Annex, Table 2).

Highest is the number of residential buildings built in district Varna - 79 buildings with 392 dwellings in them, followed by Plovdiv - 73 residential buildings with 166 dwellings and Burgas - 60 residential buildings with 573 dwellings (Figure 2).

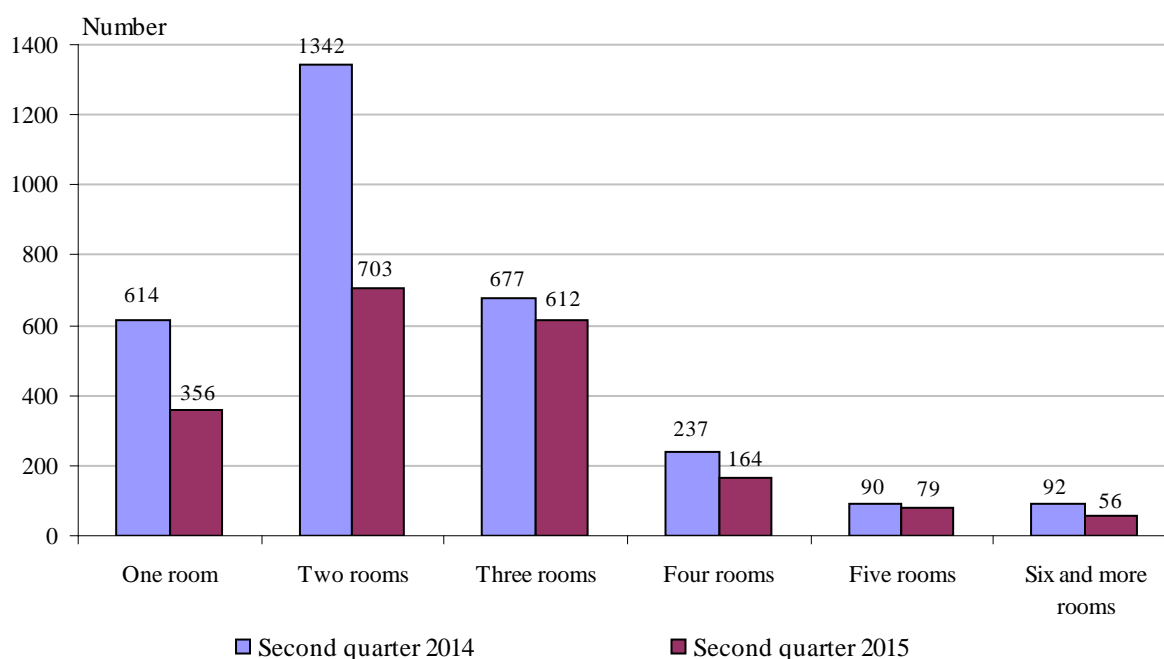
Figure 2. Newly built residential buildings and dwellings completed in second quarter of 2015 by districts





Highest was the number of newly built dwellings with two rooms (35.7%), followed by those with three rooms (31.1%) and lowest is the number of dwellings with six and more rooms - 2.8% (Figure 3).

Figure 3. Newly built dwellings completed by number of rooms



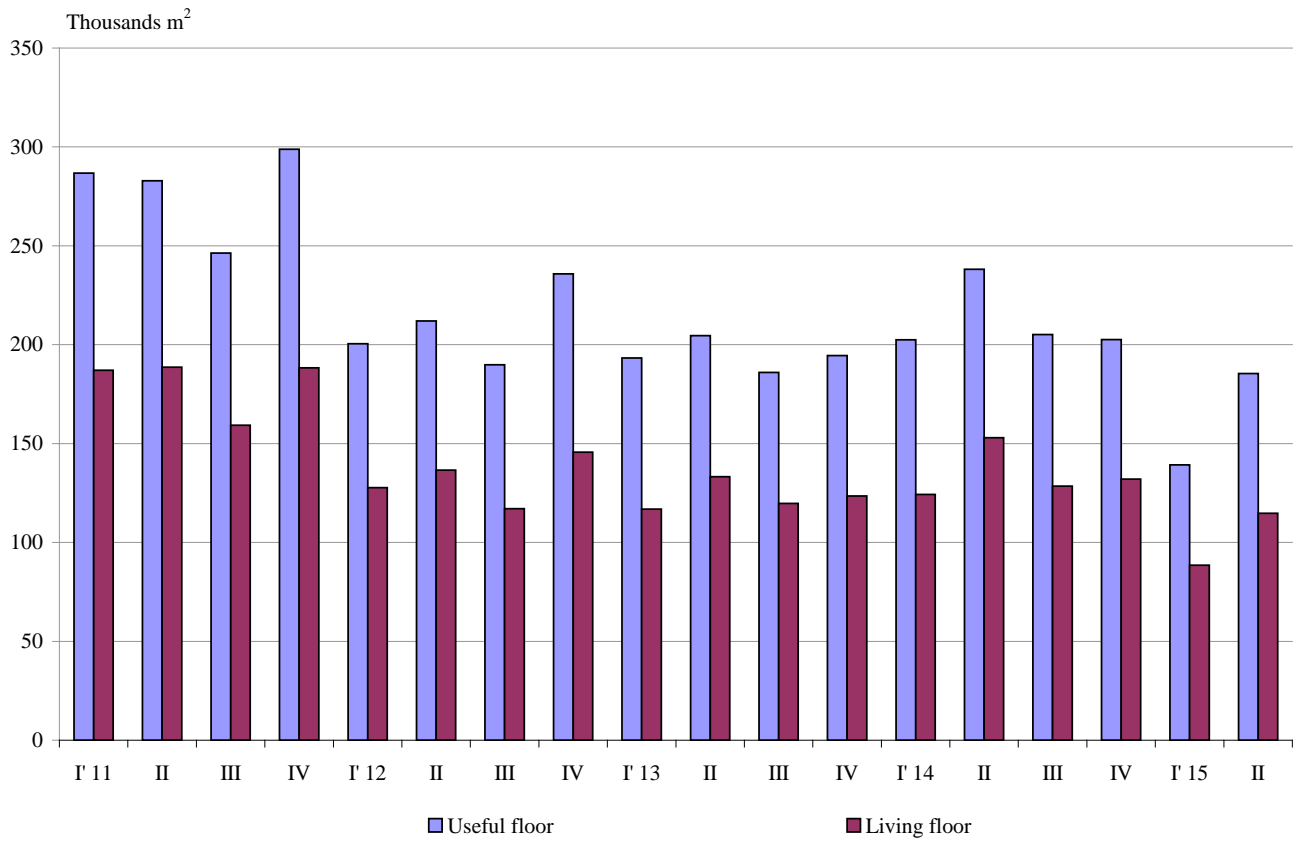
In the second quarter of 2015 **the total useful space** of newly built dwellings was 185.5 thousand sq. m or by 22.1% less than in the same quarter of 2014. **The living floor** space also decreased (by 24.9%) to 114.8 thousand sq. m (Figure 4).

At the same time **the average useful floor space** of newly built dwelling increased from 78.0 sq. m in the second quarter of 2014 to 94.1 sq. m in the same quarter of 2015.

The biggest average useful floor space of a newly built dwelling was recorded in district Pleven - 149.5 sq. m and Plovdiv - 142.5 sq. m, and the smallest one in Shumen - 60.0 sq. m and Blagoevgrad - 67.6 sq. m.



Figure 4. Total useful floor space and living floor space of newly built dwellings completed by quarters





Methodological notes

The statistical data about the newly built residential buildings and dwellings are prepared on the basis of quarterly reports of the municipal administrations.

In the scope of survey are newly built residential buildings with approved or valid usage license according to Regulation № 2/31.07.2003 of the Ministry of Regional Development and Public Works.

Living floor space is the floor space of living-rooms, bedrooms, recesses for sleeping, dining-rooms, living-rooms, cabinets and libraries of scientists and drawing-rooms but does not include the space of kitchens.

Service floor space is the floor space of rooms and kitchens with less than 4 square meters floor space, vestibules with a portal or other screen, corridors, bathrooms, toilets, ladders, hanging closets, other service rooms such as drying-rooms, laundries or balconies regardless their space. The space of kitchens with over 4 sq. m. floor space is shown separately.

The useful floor space of dwelling is a sum of the living-floor-space, the service floor space and the space of the kitchens.

The average useful floor space is a ratio between the useful floor space and the number of dwellings.

Annex

Table 1

Newly build residential buildings and dwellings completed in the second quarter of 2015¹

Districts	Newly completed residential buildings and dwellings - in numbers		Useful floor area of newly built dwellings - sq. m			
	Buildings	Dwellings	Total	Living floor space	Service floor space	Area of kitchens
Total	497	1970	185459	114771	56044	14644
Blagoevgrad	11	69	4661	3589	522	550
Burgas	60	573	47237	27414	16358	3465
Varna	79	392	29900	18196	10262	1442
Veliko Tarnovo	26	52	5079	2931	1686	462
Vidin	5	29	2156	1108	848	200
Vratsa	1	1	85	45	32	8
Gabrovo	10	11	1406	823	477	106
Dobrich	23	145	19130	15286	2920	924
Kardzhali	8	43	3001	1786	771	444
Kyustendil	1	1	112	94	6	12
Lovech	11	11	1220	742	380	98
Montana	-	-	-	-	-	-
Pazardzhik	18	51	5454	3279	1635	540
Pernik	26	28	3522	1609	1479	434
Pleven	4	4	598	323	215	60
Plovdiv	73	166	23658	12666	8735	2257
Razgrad	3	13	1059	519	410	130
Ruse	12	22	2180	1328	651	201
Silistra	4	4	354	207	116	31
Sliven	6	43	3718	2598	987	133
Smolyan	10	39	2641	1836	417	388
Sofia	33	43	5478	3448	1300	730
Sofia (stolitsa)	29	85	9807	6453	2549	805
Stara Zagora	13	29	3134	2099	601	434
Targovishte	5	21	2440	1262	1105	73
Haskovo	15	45	4087	3035	642	410
Shumen	7	44	2638	1614	808	216
Yambol	4	6	704	481	132	91

¹ Preliminary data.



Table 2

Newly built residential buildings by type of building

(Number)

	2013				2014				2015 ¹	
	I quarter	II quarter	III quarter	IV quarter	I quarter	II quarter	III quarter	IV quarter	I quarter	II quarter
Total	551	556	510	582	532	628	572	720	558	497
Houses	388	391	342	392	366	417	412	518	420	327
Blocks of flats	97	99	92	88	75	123	97	89	74	78
Mixed buildings	26	29	21	30	26	40	24	38	23	24
Hostels	1	2	2	5	8	-	1	2	1	1
Country houses	39	35	53	62	47	45	36	72	39	67
Buildings of institutional households	-	-	-	5	10	3	2	1	1	-

¹ Preliminary data.