

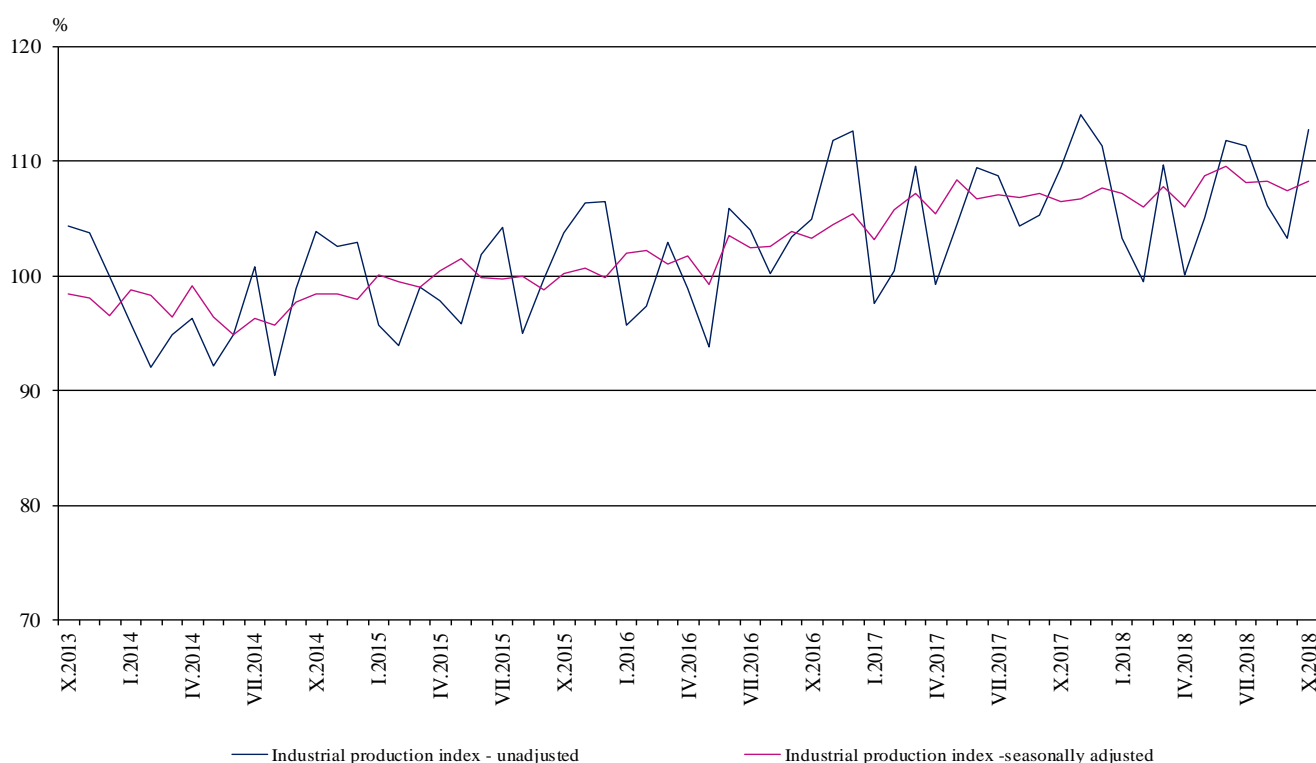


INDUSTRIAL PRODUCTION INDICES IN OCTOBER 2018¹

According to the preliminary data the Industrial Production Index², seasonally adjusted³, increased by 0.8% in October 2018 as compared to September 2018.

In October 2018 the working day adjusted⁴ Industrial Production Index rose by 1.6% in comparison with the same month of 2017.

Figure 1. Industrial Production Indices (2015 = 100)



¹ October 2018 data are preliminary. The final data on Industrial Production and Turnover Indices for September 2018 can be found on the NSI website: <http://www.nsi.bg/en>.

² Monthly Industrial Production and Industrial turnover indices measure changes in production and turnover values of industrial enterprises. This information can be used to assess the current economic development and for short-term forecasts. Indices do not measure the actual production level, it aims to measure the average change in value of production between two points of time. Indices are compiled on the base of information collected through representative sampling survey on industrial enterprises. The sample covers enterprises with annual turnover more than 97% of total turnover in industry.

Industrial production indices are calculated at constant base year that is to say they are weighted with the structure of the value added at factor costs in the base year.

³ Seasonal adjustment is a statistical method, which eliminates the seasonal component of time series.

⁴ Working day adjustment is an adjustment for variations caused by calendar effects, different number of calendar and working days in the months, national holidays and outliers (for example the presence of more non-working days in May could contribute to the decline in the production in some activities).

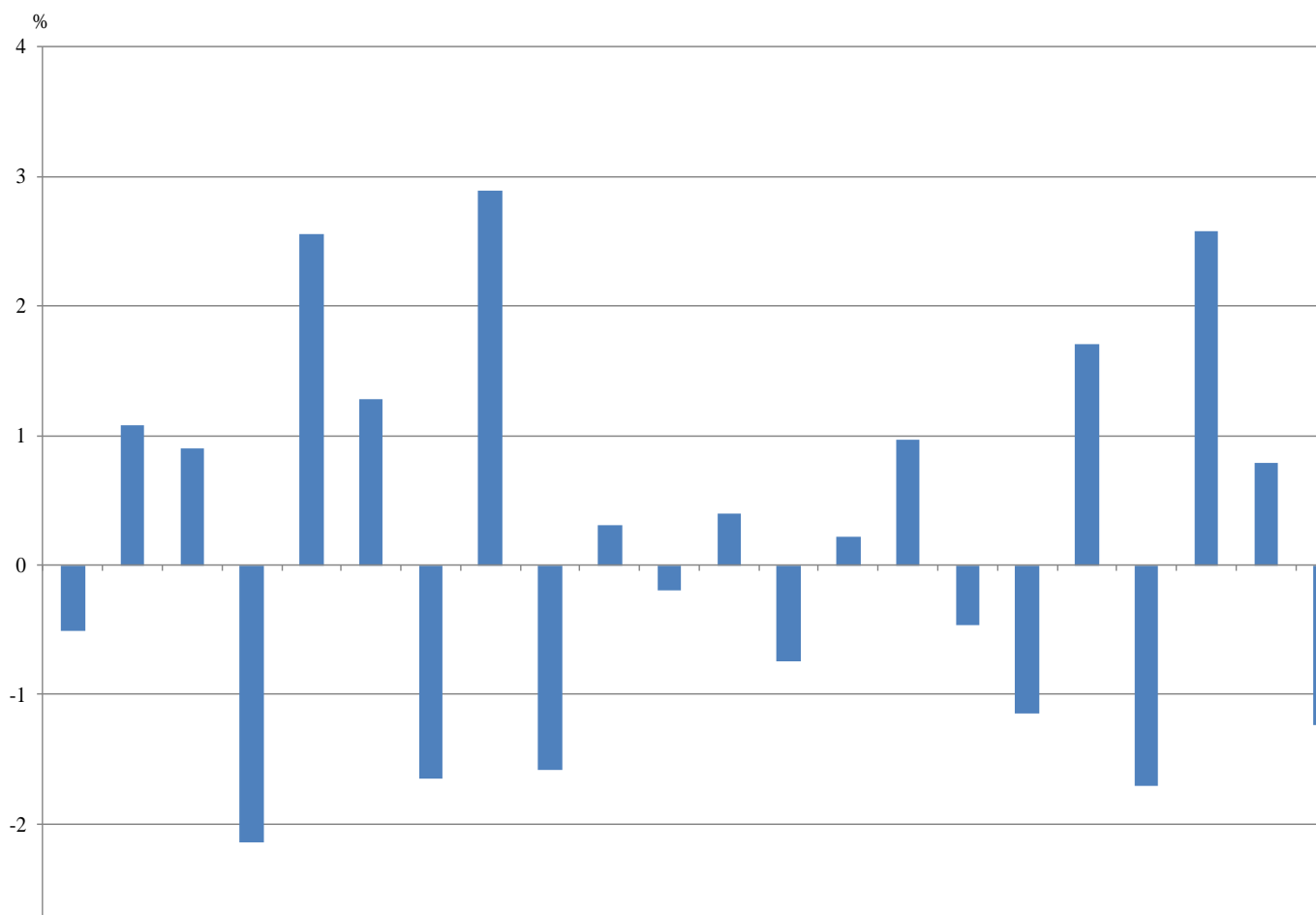


Monthly comparisons

In October 2018 as compared to September 2018, the seasonally adjusted Industrial Production Index increased in the manufacturing by 0.9% and in the mining and quarrying industry by 0.3%, while in the electricity, gas, steam and air conditioning supply the production fell by 2.0%.

The most significant production increases in the manufacturing were registered in the manufacture of other transport equipment by 29.4%, in the manufacture of tobacco products by 28.3%, in the manufacture of chemicals and chemical products by 15.2%, in the manufacture of fabricated metal products, except machinery and equipment by 14.0%. There were decreases in the manufacture of basic pharmaceutical products and pharmaceutical preparations by 8.7%, in the manufacture of basic metals by 4.4%, in the manufacture of wood and of products of wood and cork, except furniture; manufacture of articles of straw and plaiting materials and in the repair and installation of machinery and equipment by 4.2%.

**Figure 2. Changes of Industrial Production Indices compared to the previous month
(Seasonally adjusted)**



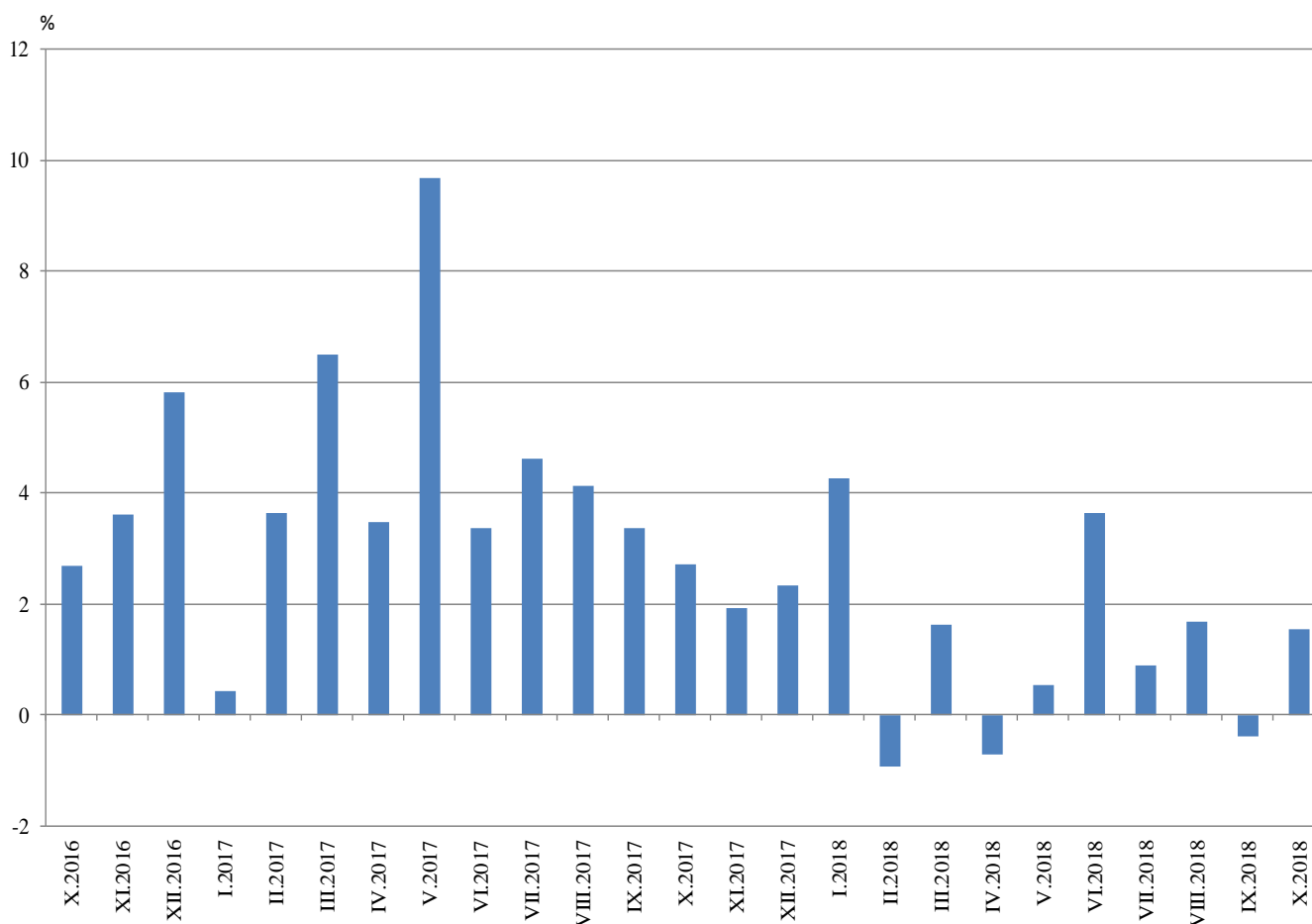


Annual comparisons

On annual basis in October 2018 Industrial Production Index calculated from working day adjusted data rose in the manufacturing by 2.6%, while the production went down in the mining and quarrying industry by 6.3% and in the electricity, gas, steam and air conditioning supply by 3.8%.

In the manufacturing, the more considerable increases compared to the same month of the previous year were registered in the manufacture of other transport equipment by 71.7%, in the manufacture of tobacco products by 25.7%, in the repair and installation of machinery and equipment by 23.8%, in the manufacture of basic pharmaceutical products and pharmaceutical preparations by 16.8%. Decreases were seen in the manufacture of basic metals by 16.7%, in the manufacture of wearing apparel by 11.8%, in the manufacture of wood and of products of wood and cork, except furniture; manufacture of articles of straw and plaiting materials by 8.9%, manufacture of fabricated metal products, except machinery and equipment by 7.8%.

Figure 3. Changes of Industrial Production Indices compared to the same month of the previous year (Working day adjusted)



Annex

Table 1
Changes of Industrial Production Indices compared to the previous month^{1,2}
(Per cent)

Economic activities	NACE.BG - 2008	2018					
		V	VI	VII	VIII	IX	X
Industry	B_TO_E36	2.6	0.8	-1.2	0.0	-0.8	0.8
Mining and quarrying	B	1.5	18.8	-17.7	-2.0	4.6	0.3
Mining of coal and lignite	B05	20.1	16.7	-20.6	-3.5	-11.1	28.0
Extraction of crude petroleum and natural gas	B06
Mining of metal ores	B07	-12.8	33.7	-18.4	-7.8	17.8	-10.5
Other mining and quarrying	B08	-1.6	0.3	-13.8	8.2	10.0	-9.3
Mining support service activities	B09
Manufacturing	C	3.3	0.4	-0.4	0.7	-1.2	0.9
Manufacture of food products	C10	3.5	-2.6	0.7	-0.8	-0.6	-2.1
Manufacture of beverages	C11	7.9	-1.3	-6.7	5.4	1.8	1.4
Manufacture of tobacco products	C12	7.4	3.7	-16.2	-10.8	12.0	28.3
Manufacture of textiles	C13	-2.3	0.2	7.3	0.5	-5.1	4.0
Manufacture of wearing apparel	C14	1.3	0.0	1.2	-0.2	-3.4	-3.7
Manufacture of leather and related products	C15	2.6	-1.0	-3.8	-3.0	1.2	2.9
Manufacture of wood and of products of wood and cork, except furniture; manufacture of articles of straw and plaiting materials	C16	0.2	-4.9	-1.9	-2.3	6.0	-4.2
Manufacture of paper and paper products	C17	3.0	1.4	-1.3	-2.0	0.1	9.0
Printing and reproduction of recorded media	C18	2.3	-2.9	-2.3	4.2	-3.9	4.3
Manufacture of coke and refined petroleum products	C19
Manufacture of chemicals and chemical products	C20	3.2	3.9	-3.2	3.9	-8.1	15.2
Manufacture of basic pharmaceutical products and pharmaceutical preparations	C21	1.2	0.3	3.4	-0.5	13.1	-8.7
Manufacture of rubber and plastic products	C22	6.9	-1.2	2.0	-5.9	4.2	1.5
Manufacture of other non-metallic mineral products	C23	0.3	0.5	-1.7	1.6	-3.3	7.8
Manufacture of basic metals	C24	1.9	0.2	1.4	1.5	-5.9	-4.4
Manufacture of fabricated metal products, except machinery and equipment	C25	12.5	-4.8	15.9	-6.9	-18.1	14.0
Manufacture of computer, electronic and optical products	C26	-2.0	6.5	1.4	2.4	3.3	-2.8
Manufacture of electrical equipment	C27	2.6	-0.6	-2.9	11.2	-5.5	0.7
Manufacture of machinery and equipment n.e.c.	C28	-4.4	1.3	-0.4	1.1	3.4	2.5
Manufacture of motor vehicles, trailers and semi-trailers	C29	3.0	2.9	-4.6	0.4	3.1	1.8
Manufacture of other transport equipment	C30	-3.2	7.6	-7.0	-7.4	8.5	29.4
Manufacture of furniture	C31	7.0	-4.0	0.3	-5.7	3.1	-1.2
Other manufacturing	C32	-8.6	3.3	-5.3	-3.4	-0.1	-11.9
Repair and installation of machinery and equipment	C33	12.6	-4.2	-9.7	16.3	-7.2	-4.2
Electricity, gas, steam and air conditioning supply	D	0.4	-0.7	-0.5	1.3	-2.4	-2.0
Electricity, gas, steam and air conditioning supply	D35	0.4	-0.7	-0.5	1.3	-2.4	-2.0

¹ Seasonally adjusted.

² ‘.’ - Confidential data.

Table 2

Changes of Industrial Production Indices compared to the same month of the previous year^{1,2}
(Per cent)

Economic activities	NACE.BG - 2008	2018					
		V	VI	VII	VIII	IX	X
Industry	B_TO_E36	0.5	3.6	0.9	1.7	-0.4	1.6
Mining and quarrying	B	-8.0	9.1	-8.8	-17.3	-10.9	-6.3
Mining of coal and lignite	B05	-22.1	4.9	-12.5	-18.1	-26.6	-2.8
Extraction of crude petroleum and natural gas	B06
Mining of metal ores	B07	-0.8	19.3	-2.9	-16.9	-1.8	-11.1
Other mining and quarrying	B08	26.6	18.5	12.9	19.4	29.3	12.0
Mining support service activities	B09
Manufacturing	C	1.1	3.8	2.0	4.3	1.2	2.6
Manufacture of food products	C10	0.3	-7.0	-3.3	-0.2	-1.6	-4.7
Manufacture of beverages	C11	9.9	10.3	-4.9	8.9	5.3	5.2
Manufacture of tobacco products	C12	-20.9	-5.8	-13.3	-37.1	-24.2	25.7
Manufacture of textiles	C13	-7.7	-7.7	2.8	5.5	-6.1	0.6
Manufacture of wearing apparel	C14	-7.4	-7.4	-3.7	-0.9	-8.2	-11.8
Manufacture of leather and related products	C15	0.8	4.5	10.2	1.3	-0.3	6.8
Manufacture of wood and of products of wood and cork, except furniture; manufacture of articles of straw and plaiting materials	C16	-9.7	-11.9	-9.4	-7.9	-4.6	-8.9
Manufacture of paper and paper products	C17	-2.3	3.4	4.1	-1.8	-0.7	6.7
Printing and reproduction of recorded media	C18	3.1	3.2	-3.7	7.9	1.7	4.9
Manufacture of coke and refined petroleum products	C19
Manufacture of chemicals and chemical products	C20	-3.8	5.3	-8.4	-8.7	-9.9	4.5
Manufacture of basic pharmaceutical products and pharmaceutical preparations	C21	4.0	-2.4	4.8	5.3	26.7	16.8
Manufacture of rubber and plastic products	C22	12.0	11.5	16.9	1.7	5.2	7.7
Manufacture of other non-metallic mineral products	C23	6.0	10.0	4.7	4.7	2.6	8.0
Manufacture of basic metals	C24	-3.6	-4.2	9.8	14.8	-12.4	-16.7
Manufacture of fabricated metal products, except machinery and equipment	C25	-7.6	-5.2	-6.7	-2.6	-13.2	-7.8
Manufacture of computer, electronic and optical products	C26	11.7	11.0	14.5	12.0	31.8	12.5
Manufacture of electrical equipment	C27	12.1	11.7	7.4	26.2	8.4	9.9
Manufacture of machinery and equipment n.e.c.	C28	-9.8	1.4	-1.8	0.1	3.7	4.2
Manufacture of motor vehicles, trailers and semi-trailers	C29	20.0	31.3	16.9	23.0	16.3	12.6
Manufacture of other transport equipment	C30	27.2	33.7	33.1	15.2	16.7	71.7
Manufacture of furniture	C31	7.3	6.3	10.0	1.7	8.0	7.3
Other manufacturing	C32	8.5	7.2	15.7	-6.8	-5.0	-10.5
Repair and installation of machinery and equipment	C33	15.2	24.7	-10.4	34.7	11.8	23.8
Electricity, gas, steam and air conditioning supply	D	-5.1	-4.9	-4.9	-2.6	-4.7	-3.8
Electricity, gas, steam and air conditioning supply	D35	-5.1	-4.9	-4.9	-2.6	-4.7	-3.8

¹ Working day adjusted.

² ‘..’ - Confidential data.

Table 3

Industrial Production Indices¹
(Seasonally adjusted, 2015 = 100)

NACE.BG - 2008	2017			2018									
	X	XI	XII	I	II	III	IV	V	VI	VII	VIII	IX	X
B_TO_E36	106.5	106.7	107.7	107.2	106.0	107.8	106.0	108.7	109.6	108.2	108.3	107.4	108.3
B	104.4	102.9	100.4	101.0	96.3	96.3	95.7	97.1	115.4	95.0	93.1	97.4	97.7
B05	93.6	79.4	86.0	81.6	74.8	92.7	73.5	88.2	102.9	81.7	78.9	70.1	89.7
B06
B07	117.5	120.0	110.0	124.4	122.1	110.0	120.4	104.9	140.3	114.6	105.6	124.3	111.3
B08	84.8	95.1	89.8	113.5	105.3	92.9	104.2	102.6	102.9	88.7	96.0	105.6	95.8
B09
C	111.1	112.0	114.2	114.2	110.5	111.4	109.5	113.1	113.5	113.1	113.9	112.6	113.5
C10	104.8	105.1	110.7	110.1	103.6	110.0	101.9	105.5	102.8	103.5	102.7	102.1	100.0
C11	100.6	93.5	97.0	102.6	96.4	98.6	97.1	104.8	103.4	96.5	101.7	103.5	105.0
C12	65.5	64.0	57.7	57.4	63.7	60.4	61.1	65.5	68.0	57.0	50.9	56.9	73.0
C13	99.7	103.0	101.1	97.5	95.9	101.1	95.8	93.6	93.8	100.6	101.2	96.0	99.8
C14	96.1	99.5	95.5	92.2	93.6	95.1	90.3	91.4	91.5	92.5	92.4	89.2	85.9
C15	92.2	91.5	99.0	90.4	99.2	104.0	98.5	101.1	100.1	96.3	93.4	94.5	97.3
C16	83.8	84.4	87.5	87.8	79.5	79.4	82.3	82.5	78.5	77.0	75.2	79.7	76.3
C17	104.3	103.9	96.5	103.2	98.7	101.0	100.1	103.1	104.5	103.1	101.0	101.1	110.2
C18	102.5	99.5	98.6	105.4	98.0	103.5	105.6	108.1	105.0	102.6	106.8	102.7	107.0
C19
C20	123.6	122.3	124.0	113.9	110.7	109.3	110.4	114.0	118.4	114.6	119.1	109.4	126.0
C21	98.6	112.4	115.2	109.5	104.5	110.1	108.7	110.0	110.4	114.2	113.6	128.6	117.3
C22	123.9	123.9	127.6	128.5	125.6	125.2	123.8	132.4	130.9	133.5	125.6	130.9	132.8
C23	104.1	104.9	103.0	116.8	108.1	103.8	106.5	106.8	107.3	105.5	107.1	103.6	111.6
C24	119.6	123.3	127.9	124.9	117.8	114.2	111.1	113.2	113.4	115.0	116.6	109.8	105.0
C25	137.2	135.3	123.0	128.7	126.7	133.7	117.0	131.5	125.2	145.1	135.2	110.7	126.2
C26	133.4	135.6	131.0	138.1	138.7	148.8	138.2	135.4	144.2	146.1	149.7	154.6	150.3
C27	109.9	107.5	113.2	111.1	106.5	112.7	115.3	118.3	117.6	114.2	127.0	119.9	120.8
C28	121.0	120.9	125.3	122.8	115.2	115.5	120.2	114.9	116.5	116.0	117.3	121.3	124.3
C29	128.4	127.2	128.1	132.0	131.7	131.6	136.5	140.6	144.7	138.0	138.5	142.8	145.4
C30	97.4	115.8	91.5	121.8	130.2	126.7	124.7	120.7	129.9	120.8	111.9	121.3	157.1
C31	99.5	101.4	112.2	114.4	112.9	113.6	108.7	116.4	111.7	112.0	105.6	108.9	107.6
C32	125.3	137.8	145.4	145.2	137.5	132.8	149.6	136.8	141.3	133.9	129.3	129.1	113.8
C33	90.2	106.4	111.1	112.1	107.4	113.6	111.7	125.8	120.4	108.7	126.5	117.4	112.5
D	90.5	92.2	92.7	93.9	95.4	98.8	92.6	93.0	92.4	92.0	93.1	90.9	89.1
D35	90.5	92.2	92.7	93.9	95.4	98.8	92.6	93.0	92.4	92.0	93.1	90.9	89.1

¹ '..' - Confidential data.



Table 4

Industrial Production Indices¹
(Working day adjusted, 2015 = 100)

NACE.BG - 2008	2015	2016	2017			2018									
	X	X	X	XI	XII	I	II	III	IV	V	VI	VII	VIII	IX	X
B_TO_E36	103.9	106.7	109.6	113.1	113.6	102.4	99.5	110.5	101.3	104.4	112.5	111.6	104.8	106.5	111.3
B	102.9	112.2	118.1	111.4	109.2	97.9	90.3	92.0	89.5	90.5	111.5	93.9	91.5	101.1	110.6
B05	104.0	115.4	115.8	93.0	104.2	94.5	74.5	82.2	54.4	72.0	85.5	75.1	75.6	75.1	112.5
B06
B07	99.7	110.1	125.2	125.2	115.8	116.0	112.9	108.3	121.1	104.9	140.3	114.6	105.6	124.3	111.3
B08	123.6	96.5	98.4	107.8	93.2	70.4	78.9	82.8	104.0	107.2	114.7	96.6	104.4	116.3	110.2
B09
C	108.0	110.6	116.3	118.2	113.5	99.3	99.3	113.5	107.3	113.0	121.0	120.2	110.7	114.0	119.4
C10	111.6	113.4	115.5	112.6	115.6	92.8	89.2	108.1	97.4	103.8	105.7	104.9	105.8	109.8	110.0
C11	86.1	93.2	89.8	82.6	100.7	63.3	67.1	93.4	97.9	113.7	127.6	121.6	128.5	113.2	94.4
C12	92.8	74.2	63.1	62.6	56.3	36.0	50.2	59.9	55.6	67.7	79.4	57.5	46.5	51.0	79.3
C13	110.8	104.5	102.4	107.4	86.6	82.4	93.3	114.1	105.6	106.6	103.1	105.2	80.9	91.7	103.0
C14	105.2	105.4	96.9	99.3	95.7	95.1	91.4	93.7	82.2	83.1	99.0	106.4	89.7	87.2	85.4
C15	100.3	96.2	96.3	93.4	92.9	90.7	97.2	107.5	87.1	86.7	105.0	107.6	83.3	94.4	102.8
C16	108.2	98.2	92.5	91.5	81.5	70.1	69.1	77.7	81.1	82.6	84.8	83.3	75.5	83.8	84.2
C17	111.0	104.8	105.4	104.6	90.0	100.4	95.0	103.8	98.8	105.3	110.4	106.7	100.1	101.3	112.4
C18	107.2	113.2	109.8	112.9	107.6	94.5	89.4	104.8	101.7	105.8	107.0	101.7	100.6	101.1	115.3
C19
C20	104.3	114.7	122.6	126.0	124.2	105.7	103.2	118.9	113.4	113.5	122.6	117.0	115.6	109.1	128.0
C21	108.9	109.1	102.2	119.4	118.9	102.5	102.9	117.4	105.9	107.5	116.6	113.1	102.2	133.1	119.4
C22	113.7	124.1	137.0	128.1	107.6	113.1	113.9	128.3	124.0	135.2	140.5	144.8	121.2	136.1	147.6
C23	111.2	107.4	116.7	113.3	91.9	80.7	85.0	100.2	110.6	115.6	117.6	113.5	114.0	112.1	126.0
C24	104.9	118.5	124.7	127.1	115.4	126.5	105.2	120.5	114.4	110.6	113.1	122.6	110.7	104.7	103.9
C25	111.4	114.9	139.3	146.4	146.2	93.1	110.8	135.7	115.4	127.2	133.9	152.8	134.1	113.3	128.4
C26	109.1	126.8	139.8	144.6	138.9	129.7	128.2	160.5	136.8	132.7	152.0	149.8	131.3	149.5	157.3
C27	112.9	113.3	122.3	116.9	102.4	103.0	100.7	118.6	112.9	117.8	126.2	118.1	113.4	122.2	134.4
C28	101.1	105.5	123.7	128.9	120.6	108.2	110.0	121.8	121.4	115.1	125.3	122.7	104.5	120.0	128.8
C29	111.7	119.5	138.3	135.3	116.9	134.8	133.2	140.9	137.3	141.9	149.4	134.8	117.6	142.9	155.7
C30	106.8	77.8	90.8	115.5	89.1	115.2	128.5	149.5	133.3	140.5	143.3	115.7	89.4	106.1	156.0
C31	110.7	118.2	108.2	111.1	115.0	98.1	100.5	113.9	106.3	116.0	113.3	115.0	103.5	112.2	116.1
C32	120.3	134.1	143.2	145.5	129.3	125.1	119.0	132.9	145.3	135.9	160.2	132.0	132.0	137.1	128.1
C33	110.6	101.6	94.4	124.4	152.3	79.1	89.4	110.9	99.0	120.9	122.4	111.0	124.5	123.5	116.9
D	90.7	91.5	83.9	98.3	116.3	116.9	104.6	107.6	82.8	76.0	79.9	84.7	85.0	79.1	80.7
D35	90.7	91.5	83.9	98.3	116.3	116.9	104.6	107.6	82.8	76.0	79.9	84.7	85.0	79.1	80.7