

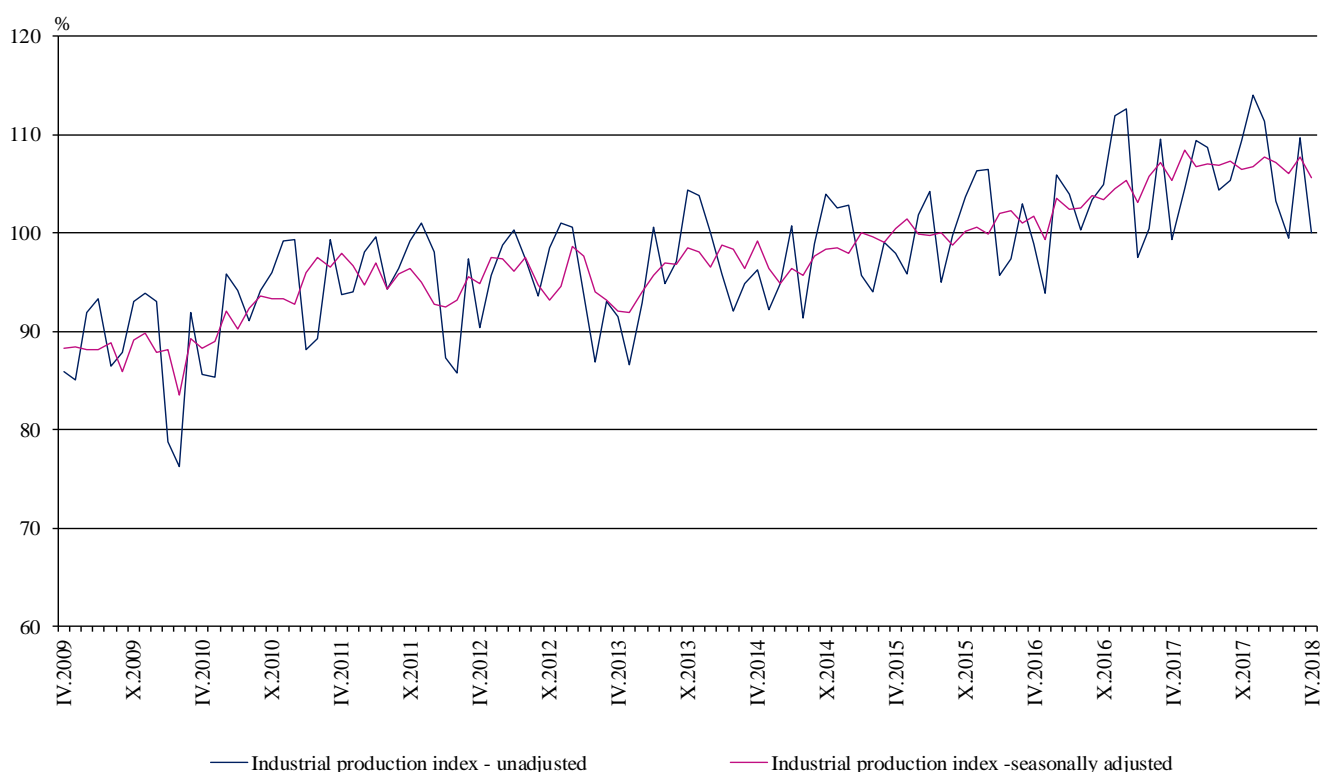


INDUSTRIAL PRODUCTION INDICES IN APRIL 2018¹

According to the preliminary data the Industrial Production Index², seasonally adjusted³, decreased by 2.0% in April 2018 as compared to March 2018.

In April 2018 working day adjusted⁴ Industrial Production Index went down by 0.8% in comparison with the same month of 2017.

Figure 1. Industrial Production Indices (2015 = 100)



¹ April 2018 data are preliminary. The final data on Industrial Production and Turnover Indices for March 2018 can be found on the NSI website: <http://www.nsi.bg/en>.

² Monthly Industrial Production and Industrial turnover indices measure changes in production and turnover values of industrial enterprises. This information can be used to access the current economic development and for short-term forecasts. Indices do not measure the actual production level, it aims to measure the average change in value of production between two points of time. Indices are compiled on the base of information collected through representative sampling survey on industrial enterprises. The sample covers enterprises with annual turnover more than 97% of total turnover in industry.

Industrial production indices are calculated at constant base year that is to say they are weighted with the structure of the value added at factor costs in the base year.

³ Seasonal adjustment is a statistical method, which eliminates the seasonal component of time series.

⁴ Working day adjustment is an adjustment for variations caused by calendar effects, different number of calendar and working days in the months, national holidays and outliers (for example the presence of more non-working days in May could contribute to the decline in the production in some activities).

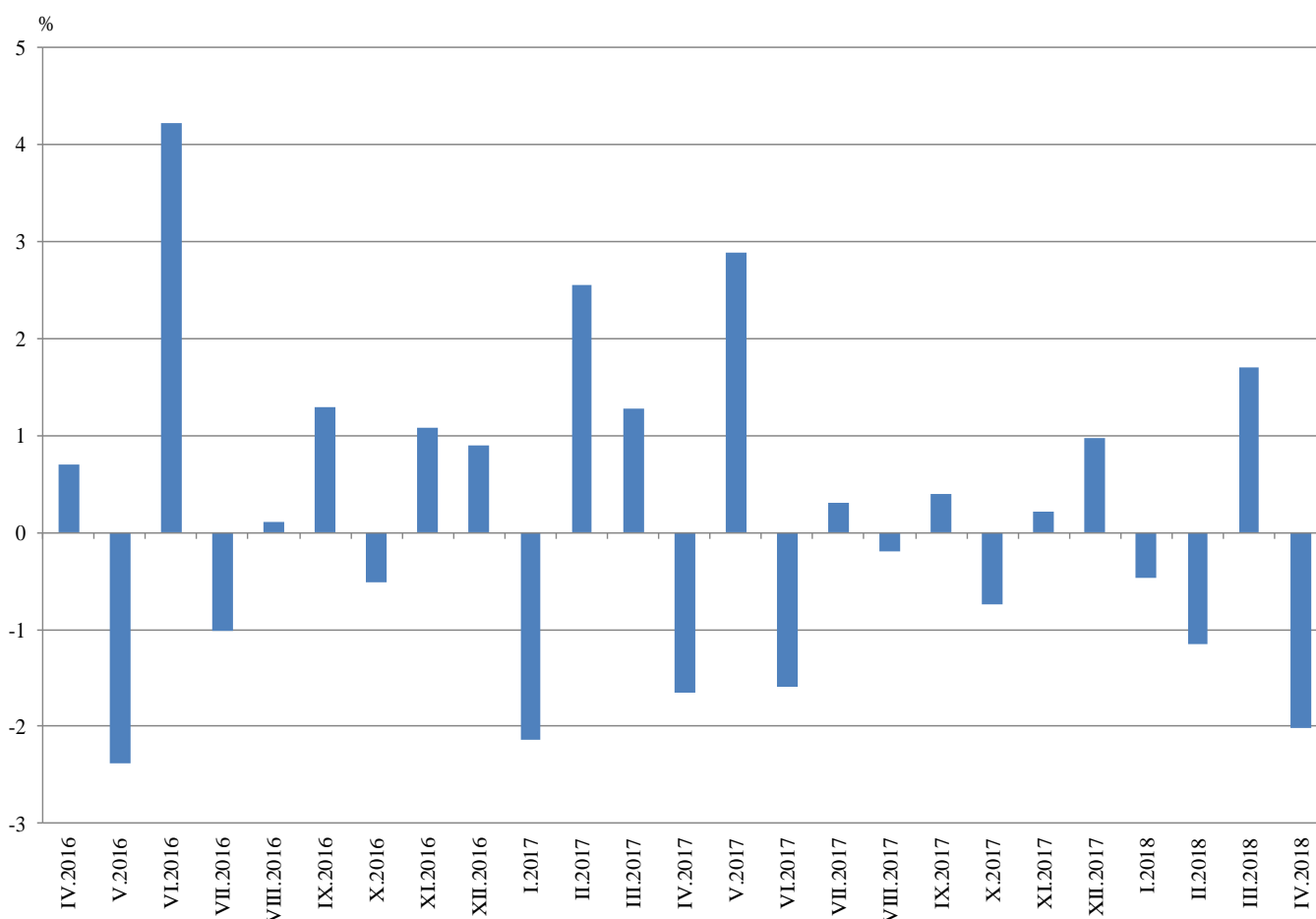


Monthly comparisons

In April 2018 as compared to March 2018, the seasonally adjusted Industrial Production Index fell in the electricity, gas, steam and air conditioning supply by 6.4%, in the manufacturing by 2.1%, and in the mining and quarrying industry by 0.6%.

The most significant production decreases in the manufacturing were registered in the manufacture of fabricated metal products, except machinery and equipment by 12.5%, in the manufacture of food products by 7.4%, in the manufacture of computer, electronic and optical products by 7.0%, in the manufacture of leather and related products by 6.2%. There were increases in the manufacture of tobacco products by 4.6%, in the manufacture of wood and of products of wood and cork, except furniture; manufacture of articles of straw and plaiting materials by 4.3%, in the manufacture of machinery and equipment n.e.c. by 4.0%, in the manufacture of motor vehicles, trailers and semi-trailers by 3.5%.

**Figure 2. Changes of Industrial Production Indices compared to the previous month
(Seasonally adjusted)**



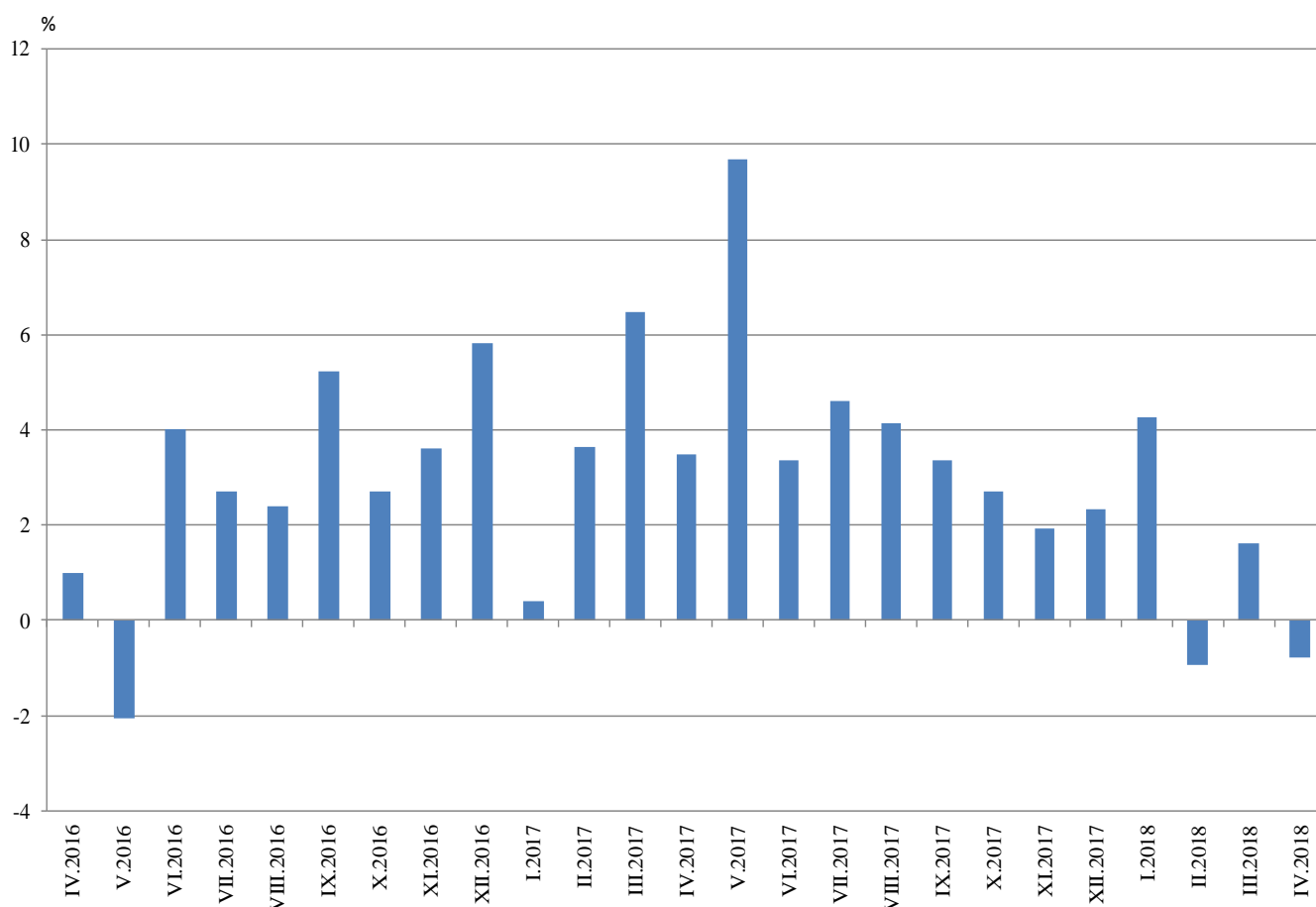


Annual comparisons

On annual basis in April 2018 Industrial Production Index calculated from working day adjusted data went down in the electricity, gas, steam and air conditioning supply by 3.6%, in the mining and quarrying industry by 2.4%, and in the manufacturing by 1.1%.

In the manufacturing, the more considerable decreases compared to the same month of the previous year were registered in the manufacture of fabricated metal products, except machinery and equipment by 24.8%, in the manufacture of tobacco products by 19.2%, in the manufacture of chemicals and chemical products by 9.8%, in the manufacture of wearing apparel by 9.2%. Increases were seen in the manufacture of other transport equipment by 55.9%, in the manufacture of motor vehicles, trailers and semi-trailers by 22.9%, in the repair and installation of machinery and equipment by 15.4%, in the manufacture of basic pharmaceutical products and pharmaceutical preparations by 13.7%.

Figure 3. Changes of Industrial Production Indices compared to the same month of the previous year (Working day adjusted)



Annex

Table 1
Changes of Industrial Production Indices compared to the previous month^{1,2}
(Per cent)

Economic activities	NACE.BG - 2008	2017		2018			
		XI	XII	I	II	III	IV
Industry	B_TO_E36	0.2	1.0	-0.5	-1.1	1.7	-2.0
Mining and quarrying	B	-1.4	-2.5	0.6	-4.6	0.0	-0.6
Mining of coal and lignite	B05	-15.1	8.3	-5.1	-8.3	23.9	-21.1
Extraction of crude petroleum and natural gas	B06
Mining of metal ores	B07	2.1	-8.4	13.1	-1.8	-10.0	9.4
Other mining and quarrying	B08	12.2	-5.6	26.4	-7.3	-11.8	12.1
Mining support service activities	B09
Manufacturing	C	0.8	1.9	0.0	-3.2	0.9	-2.1
Manufacture of food products	C10	0.3	5.4	-0.6	-5.9	6.1	-7.4
Manufacture of beverages	C11	-7.1	3.7	5.8	-6.0	2.3	-0.8
Manufacture of tobacco products	C12	-2.4	-9.8	-0.4	11.0	-5.2	4.6
Manufacture of textiles	C13	3.4	-1.9	-3.6	-1.6	5.4	-5.1
Manufacture of wearing apparel	C14	3.5	-4.0	-3.4	1.4	1.7	-5.2
Manufacture of leather and related products	C15	-0.7	8.2	-8.6	9.7	4.9	-6.2
Manufacture of wood and of products of wood and cork, except furniture; manufacture of articles of straw and plaiting materials	C16	0.7	3.8	0.3	-9.5	-0.1	4.3
Manufacture of paper and paper products	C17	-0.4	-7.1	7.0	-4.3	2.2	-1.5
Printing and reproduction of recorded media	C18	-3.0	-0.9	6.9	-7.0	5.6	1.9
Manufacture of coke and refined petroleum products	C19
Manufacture of chemicals and chemical products	C20	-1.1	1.4	-8.2	-2.8	-1.3	0.2
Manufacture of basic pharmaceutical products and pharmaceutical preparations	C21	14.0	2.5	-5.0	-4.6	5.4	-2.3
Manufacture of rubber and plastic products	C22	0.0	2.9	0.7	-2.3	-0.3	-1.7
Manufacture of other non-metallic mineral products	C23	0.8	-1.8	13.4	-7.5	-4.0	2.7
Manufacture of basic metals	C24	3.2	3.7	-2.4	-5.6	-3.1	-2.6
Manufacture of fabricated metal products, except machinery and equipment	C25	-1.4	-9.1	4.7	-1.6	5.5	-12.5
Manufacture of computer, electronic and optical products	C26	1.6	-3.4	5.4	0.4	7.3	-7.0
Manufacture of electrical equipment	C27	-2.2	5.3	-1.9	-4.1	5.8	1.9
Manufacture of machinery and equipment n.e.c.	C28	-0.1	3.7	-2.0	-6.2	0.3	4.0
Manufacture of motor vehicles, trailers and semi-trailers	C29	-0.9	0.7	3.0	-0.2	-0.1	3.5
Manufacture of other transport equipment	C30	18.9	-21.0	33.1	6.9	-2.7	-1.9
Manufacture of furniture	C31	1.9	10.7	2.0	-1.3	0.7	-4.9
Other manufacturing	C32	10.0	5.5	-0.2	-5.3	-3.5	12.6
Repair and installation of machinery and equipment	C33	17.9	4.5	0.9	-4.2	5.8	-2.1
Electricity, gas, steam and air conditioning supply	D	1.9	0.6	1.3	1.6	3.6	-6.4
Electricity, gas, steam and air conditioning supply	D35	1.9	0.6	1.3	1.6	3.6	-6.4

¹ Seasonally adjusted.

² ‘.’ - Confidential data.

Table 2

Changes of Industrial Production Indices compared to the same month of the previous year^{1,2}

(Per cent)

Economic activities	NACE.BG - 2008	2017		2018			
		XI	XII	I	II	III	IV
Industry	B_TO_E36	1.9	2.3	4.3	-0.9	1.6	-0.8
Mining and quarrying	B	-6.8	-7.0	-3.5	-14.4	-8.9	-2.4
Mining of coal and lignite	B05	-23.1	-8.2	-9.0	-31.7	-5.8	-30.9
Extraction of crude petroleum and natural gas	B06
Mining of metal ores	B07	1.3	-3.9	5.1	2.1	-6.2	17.1
Other mining and quarrying	B08	9.6	8.9	54.0	16.6	13.0	32.3
Mining support service activities	B09
Manufacturing	C	4.9	5.7	11.1	1.2	0.6	-1.1
Manufacture of food products	C10	2.5	11.0	6.7	0.8	6.9	2.2
Manufacture of beverages	C11	-13.3	-7.6	14.8	-6.4	-1.9	3.4
Manufacture of tobacco products	C12	-23.9	-40.1	-39.2	-10.2	-27.1	-19.2
Manufacture of textiles	C13	2.2	6.7	3.0	-10.9	1.7	-4.7
Manufacture of wearing apparel	C14	7.1	0.4	-9.9	-7.3	-8.4	-9.2
Manufacture of leather and related products	C15	-8.3	9.4	-5.4	5.8	4.3	2.5
Manufacture of wood and of products of wood and cork, except furniture; manufacture of articles of straw and plaiting materials	C16	-2.8	1.8	-0.5	-18.8	-11.7	-7.8
Manufacture of paper and paper products	C17	-6.1	-7.7	1.1	-4.8	-4.6	-1.5
Printing and reproduction of recorded media	C18	-7.0	-1.7	2.0	-6.5	-5.2	6.0
Manufacture of coke and refined petroleum products	C19
Manufacture of chemicals and chemical products	C20	13.1	24.5	3.6	-7.6	-4.3	-9.8
Manufacture of basic pharmaceutical products and pharmaceutical preparations	C21	13.7	22.5	2.7	2.8	6.1	13.7
Manufacture of rubber and plastic products	C22	7.2	13.0	9.6	4.8	2.6	2.2
Manufacture of other non-metallic mineral products	C23	9.2	5.5	39.5	7.0	-1.0	6.1
Manufacture of basic metals	C24	11.4	26.0	22.4	-2.8	-5.4	1.7
Manufacture of fabricated metal products, except machinery and equipment	C25	0.7	-16.7	21.6	-5.5	-2.0	-24.8
Manufacture of computer, electronic and optical products	C26	15.4	18.3	0.7	11.9	9.2	5.8
Manufacture of electrical equipment	C27	5.0	15.7	11.1	2.9	10.4	13.2
Manufacture of machinery and equipment n.e.c.	C28	9.5	13.1	16.9	2.0	1.1	5.1
Manufacture of motor vehicles, trailers and semi-trailers	C29	11.6	11.6	17.5	16.1	9.5	22.9
Manufacture of other transport equipment	C30	47.1	-2.5	33.0	62.2	48.2	55.9
Manufacture of furniture	C31	-9.8	9.9	15.9	11.0	6.1	0.0
Other manufacturing	C32	3.3	7.2	-9.5	-1.0	-2.9	15.7
Repair and installation of machinery and equipment	C33	12.0	12.3	30.0	11.7	19.7	15.4
Electricity, gas, steam and air conditioning supply	D	-4.6	-4.9	-8.4	-2.4	7.8	-3.6
Electricity, gas, steam and air conditioning supply	D35	-4.6	-4.9	-8.4	-2.4	7.8	-3.6

¹ Working day adjusted.

² ‘..’ - Confidential data.

Table 3

Industrial Production Indices¹
(Seasonally adjusted, 2015 = 100)

NACE.BG - 2008	2017									2018			
	IV	V	VI	VII	VIII	IX	X	XI	XII	I	II	III	IV
B_TO_E36	105.4	108.4	106.7	107.0	106.8	107.3	106.5	106.7	107.7	107.2	106.0	107.8	105.6
B	97.9	105.1	107.2	104.0	112.3	109.5	104.4	102.9	100.4	101.0	96.3	96.3	95.7
B05	96.0	107.8	101.5	92.7	94.7	95.2	93.6	79.4	86.0	81.6	74.8	92.7	73.2
B06
B07	102.9	107.4	113.5	118.2	129.5	126.9	117.5	120.0	110.0	124.4	122.1	110.0	120.3
B08	79.3	81.2	87.6	76.9	79.5	82.5	84.8	95.1	89.8	113.5	105.3	92.9	104.1
B09
C	108.6	111.9	109.7	110.4	110.1	111.1	111.1	112.0	114.2	114.2	110.5	111.4	109.1
C10	99.3	105.2	110.3	106.9	102.8	103.7	104.8	105.1	110.7	110.1	103.6	110.0	101.8
C11	94.2	97.0	95.5	99.8	93.9	99.0	100.6	93.5	97.0	102.6	96.4	98.6	97.7
C12	72.5	81.1	76.4	60.9	71.4	68.8	65.5	64.0	57.7	57.4	63.7	60.4	63.2
C13	100.0	100.5	100.6	98.6	97.6	101.6	99.7	103.0	101.1	97.5	95.9	101.1	95.9
C14	98.2	98.4	98.5	96.2	93.8	97.4	96.1	99.5	95.5	92.2	93.6	95.1	90.2
C15	96.7	101.2	96.4	82.7	84.7	87.1	92.2	91.5	99.0	90.4	99.2	104.0	97.6
C16	89.8	91.5	88.8	84.7	81.0	84.0	83.8	84.4	87.5	87.8	79.5	79.4	82.8
C17	99.2	105.5	101.2	98.9	102.6	101.2	104.3	103.9	96.5	103.2	98.7	101.0	99.4
C18	100.3	106.0	102.1	105.8	99.8	100.2	102.5	99.5	98.6	105.4	98.0	103.5	105.5
C19
C20	118.8	117.2	117.1	123.6	127.8	123.6	123.6	122.3	124.0	113.9	110.7	109.3	109.5
C21	93.4	106.0	111.2	112.7	111.0	108.1	98.6	112.4	115.2	109.5	104.5	110.1	107.6
C22	119.0	119.6	117.3	115.9	121.5	124.6	123.9	123.9	127.6	128.5	125.6	125.2	123.1
C23	100.0	100.9	98.4	99.6	102.5	101.0	104.1	104.9	103.0	116.8	108.1	103.8	106.6
C24	113.5	114.5	111.9	107.9	109.7	116.6	119.6	123.3	127.9	124.9	117.8	114.2	111.2
C25	154.5	142.4	131.3	156.3	138.7	126.3	137.2	135.3	123.0	128.7	126.7	133.7	116.9
C26	130.1	119.9	130.3	127.9	134.1	118.3	133.4	135.6	131.0	138.1	138.7	148.8	138.3
C27	102.1	107.0	106.9	103.7	103.8	110.8	109.9	107.5	113.2	111.1	106.5	112.7	114.8
C28	114.2	126.4	114.4	117.6	117.0	117.5	121.0	120.9	125.3	122.8	115.2	115.5	120.2
C29	110.8	117.6	111.9	117.3	116.1	123.0	128.4	127.2	128.1	132.0	131.7	131.6	136.2
C30	83.8	97.5	102.1	91.2	90.7	98.7	97.4	115.8	91.5	121.8	130.2	126.7	124.3
C31	107.2	109.6	104.9	102.1	102.3	100.5	99.5	101.4	112.2	114.4	112.9	113.6	108.0
C32	129.8	125.7	131.9	115.4	138.0	135.8	125.3	137.8	145.4	145.2	137.5	132.8	149.5
C33	96.6	110.9	97.2	120.1	95.2	104.9	90.2	106.4	111.1	112.1	107.4	113.6	111.2
D	95.5	97.7	96.8	96.3	95.2	94.5	90.5	92.2	92.7	93.9	95.4	98.8	92.5
D35	95.5	97.7	96.8	96.3	95.2	94.5	90.5	92.2	92.7	93.9	95.4	98.8	92.5

¹ '..' - Confidential data.



Table 4

Industrial Production Indices¹
(Working day adjusted, 2015 = 100)

NACE.BG - 2008	2015	2016	2017									2018			
	IV	IV	IV	V	VI	VII	VIII	IX	X	XI	XII	I	II	III	IV
B_TO_E36	97.6	98.6	102.0	103.9	108.5	110.6	103.1	106.9	109.6	113.1	113.6	102.4	99.5	110.5	101.2
B	94.0	96.3	91.7	98.4	102.2	103.0	110.6	113.5	118.1	111.4	109.2	97.9	90.3	92.0	89.5
B05	93.5	68.0	78.7	92.5	81.5	85.8	92.3	102.3	115.8	93.0	104.2	94.5	74.5	82.2	54.4
B06
B07	95.1	116.9	103.1	105.8	117.6	118.0	127.1	126.6	125.2	125.2	115.8	116.0	112.9	108.3	120.8
B08	95.6	93.7	78.6	84.7	96.8	85.6	87.4	89.9	98.4	107.8	93.2	70.4	78.9	82.8	103.9
B09
C	98.9	101.9	108.4	111.8	116.6	117.8	106.1	112.7	116.3	118.2	113.5	99.3	99.3	113.5	107.2
C10	98.5	97.5	95.2	103.4	113.7	108.5	106.0	111.6	115.5	112.6	115.6	92.8	89.2	108.1	97.3
C11	102.5	114.8	96.5	103.5	115.7	127.8	118.0	107.5	89.8	82.6	100.7	63.3	67.1	93.4	99.8
C12	106.5	60.4	68.9	85.7	84.2	66.4	73.9	67.3	63.1	62.6	56.3	36.0	50.2	59.9	55.7
C13	105.6	116.9	110.5	115.5	111.7	102.3	76.7	97.7	102.4	107.4	86.6	82.4	93.3	114.1	105.3
C14	90.9	94.1	90.4	89.7	107.0	110.5	90.6	95.0	96.9	99.3	95.7	95.1	91.4	93.7	82.1
C15	92.0	90.7	84.5	86.0	100.4	97.6	82.3	94.7	96.3	93.4	92.9	90.7	97.2	107.5	86.6
C16	101.1	91.4	88.6	91.4	96.3	92.0	82.0	87.9	92.5	91.5	81.5	70.1	69.1	77.7	81.7
C17	93.9	105.4	100.1	107.7	106.8	102.5	102.0	102.0	105.4	104.6	90.0	100.4	95.0	103.8	98.5
C18	93.1	97.3	96.0	102.6	103.7	105.6	93.2	99.4	109.8	112.9	107.6	94.5	89.4	104.8	101.8
C19
C20	101.7	100.4	124.9	118.0	116.5	127.8	126.6	121.1	122.6	126.0	124.2	105.7	103.2	118.9	112.7
C21	108.8	101.3	92.1	103.4	119.4	107.9	97.1	105.0	102.2	119.4	118.9	102.5	102.9	117.4	104.7
C22	101.1	110.9	121.5	120.7	126.1	123.8	119.2	129.4	137.0	128.1	107.6	113.1	113.9	128.3	124.1
C23	98.3	104.2	104.4	109.1	106.9	108.4	108.8	109.2	116.7	113.3	91.9	80.7	85.0	100.2	110.8
C24	123.6	101.6	112.5	114.7	118.1	111.6	96.4	119.5	124.7	127.1	115.4	126.5	105.2	120.5	114.4
C25	84.9	114.9	153.6	137.6	141.2	163.6	137.6	130.5	139.3	146.4	146.2	93.1	110.8	135.7	115.6
C26	100.3	101.3	129.0	118.9	137.0	130.8	117.2	113.4	139.8	144.6	138.9	129.7	128.2	160.5	136.6
C27	100.1	96.4	99.7	105.1	113.0	110.0	89.8	112.7	122.3	116.9	102.4	103.0	100.7	118.6	112.8
C28	103.0	96.5	115.0	127.6	123.6	125.0	104.5	115.7	123.7	128.9	120.6	108.2	110.0	121.8	120.9
C29	101.4	112.2	111.4	118.3	113.8	115.3	95.6	122.9	138.3	135.3	116.9	134.8	133.2	140.9	137.0
C30	92.2	118.6	85.5	110.4	107.2	86.9	77.6	90.9	90.8	115.5	89.1	115.2	128.5	149.5	133.3
C31	101.6	105.3	105.9	108.1	106.6	104.5	101.7	103.8	108.2	111.1	115.0	98.1	100.5	113.9	105.9
C32	91.2	105.4	125.4	125.3	149.4	114.1	141.7	144.4	143.2	145.5	129.3	125.1	119.0	132.9	145.0
C33	83.1	83.0	85.8	104.9	98.1	123.9	92.4	110.5	94.4	124.4	152.3	79.1	89.4	110.9	99.0
D	95.5	89.0	85.9	80.1	84.1	89.1	87.3	83.0	83.9	98.3	116.3	116.9	104.6	107.6	82.8
D35	95.5	89.0	85.9	80.1	84.1	89.1	87.3	83.0	83.9	98.3	116.3	116.9	104.6	107.6	82.8