



CRIMES CONCLUDED WITH PENALTY INFLICTED AND PERSONS CONVICTED IN FIRST SEMESTER OF 2011 (PRELIMINARY DATA)

According to the preliminary data of the National Statistical Institute for the first semester of 2011, the trials ended with inflicted penalty cover 14 136 committed crimes.

The number of persons convicted with penalties come into force amounted to 15 796. The number of persons with effective sentence of conviction amounted to 9 276 and conditionally sentenced are 6 520 persons.

There are not considerable changes in the structure of crimes, ended with penalties inflicted, by chapters of the Penal Code. The **crimes of general danger** (such committed in a way presenting a general danger or by means of general danger at the transport and communication, directed against public health or environment, related to the usage of nuclear energy for peace purposes, and other crimes of general danger) hold the first place as a number and relative share in the total number of punished criminality. 5 289 crimes of this kind have been punished in the first half of 2011. The relative share of these crimes in the total number of punished criminality is 37.4%. The number of convicted persons for this kind of crimes amounts to 5 168, or 32.7% from the total number of convicted persons.

- The punished cases of *crimes against the transport and communications* are 4 361. Convicted persons for this kind of crimes are 4 270, that present 82.6% from the total number of persons convicted for crimes of general danger.
- During the first half of 2011 the number of punished *drug related crimes* (contraband of drugs, production, processing, possessing, dissemination, transportation, carrying and other) is 571, as convicted persons are 548.

On the second place in the structure of punished criminality are **crimes against the property**. They include theft and robbery of property, misappropriation, fraud, extortion, receiving stolen goods, destroying and damaging of property. The number of punished crimes of this kind in first semester of 2011 is 5 068. The share of these crimes in the punished criminality is 35.9%. The number of persons convicted for this kind of crimes is 6 772.

- 3 936 crimes "*thefts of property*" were concluded with infliction of penalty as the number of convicted persons for this kind of crime is 5 564.
- 469 persons were convicted for 384 *robberies*.

Punished **crimes against the person** (homicide, assault and battery, discrediting, kidnapping and illegal constraint, compulsion, disclosure of a secret of another, insult and libel, debauchery, rape and traffic of people) amounted to 811 in the first half of 2011, which constituted 5.7% from the total number of crimes concluded with infliction of penalty. The number of persons convicted is 774.

- 370 crimes "*bodily harm*" was concluded with penalties inflicted in the first half of 2011 and the number of persons convicted for committed bodily harms is 376.
- The number of persons convicted for *rape (committed and attempted)* in the same period is 41.

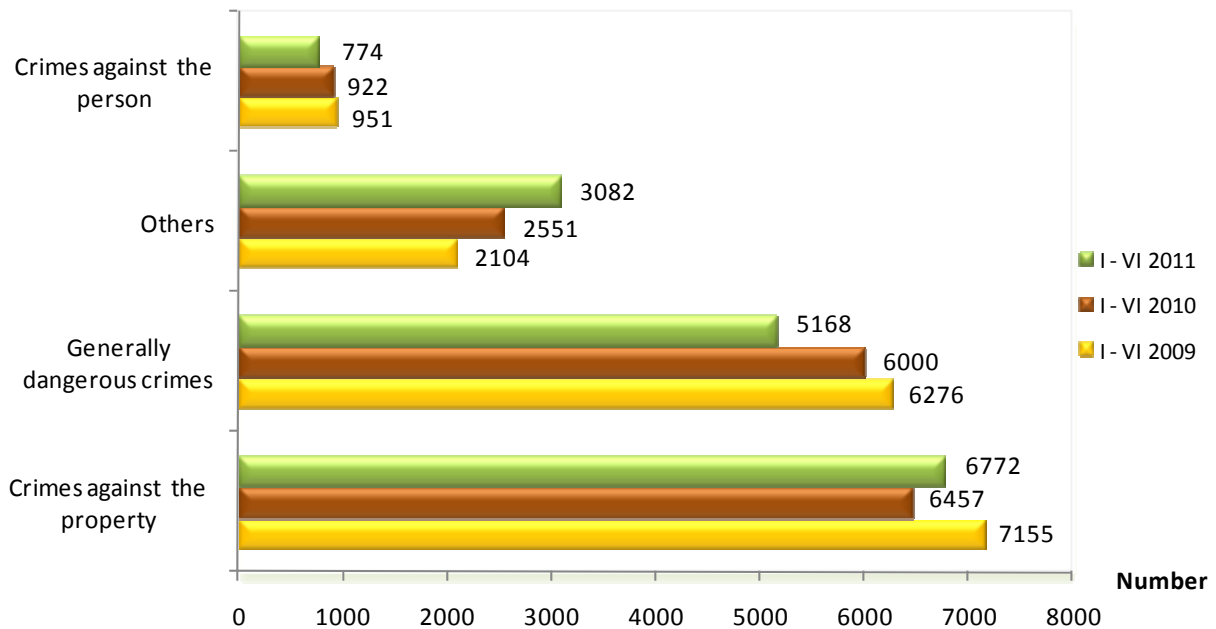


www.nsi.bg

Persons convicted for “other kinds of crimes” commitment:

- for crimes against the economy - 1 191 persons;
- for committed crimes against the activity of state bodies, public organizations and persons performing public duties – 756 persons;
- for crimes against the order and public peace - 297 persons;
- for crimes against the marriage, family and youth – 281 persons;
- for crimes against the financial, tax and insurance systems - 61 persons.

Figure 1. Persons convicted by chapters of the Penal Code in the first semesters of 2009, 2010 and 2011



Persons convicted by gender and age

In the first half of 2011 14 694 males and 1 066 females are convicted. The highest is share of convicted persons belonging to the age group from 18 to 24 years – 4 305 persons convicted. That is an age group with the highest coefficient of criminal activity – 1 310 per 100 000 persons from respective criminally responsible population (persons convicted per 100 000 persons from average number of population over 14 years in first six months of 2011).

Second place by intensity of the criminal activity is for age group 25 – 29. In first semester of 2011 the coefficient is 1 022 per 100 000 persons of the respective population as 2 606 persons are convicted. The coefficients of criminal activity for other age groups are, as follow:

- 14 – 17 years – 759 per 100 000 persons from respective population;
- 30 – 39 years - 740 per 100 000 persons from respective population;
- 40 and over – 190 per 100 000 persons from respective population.



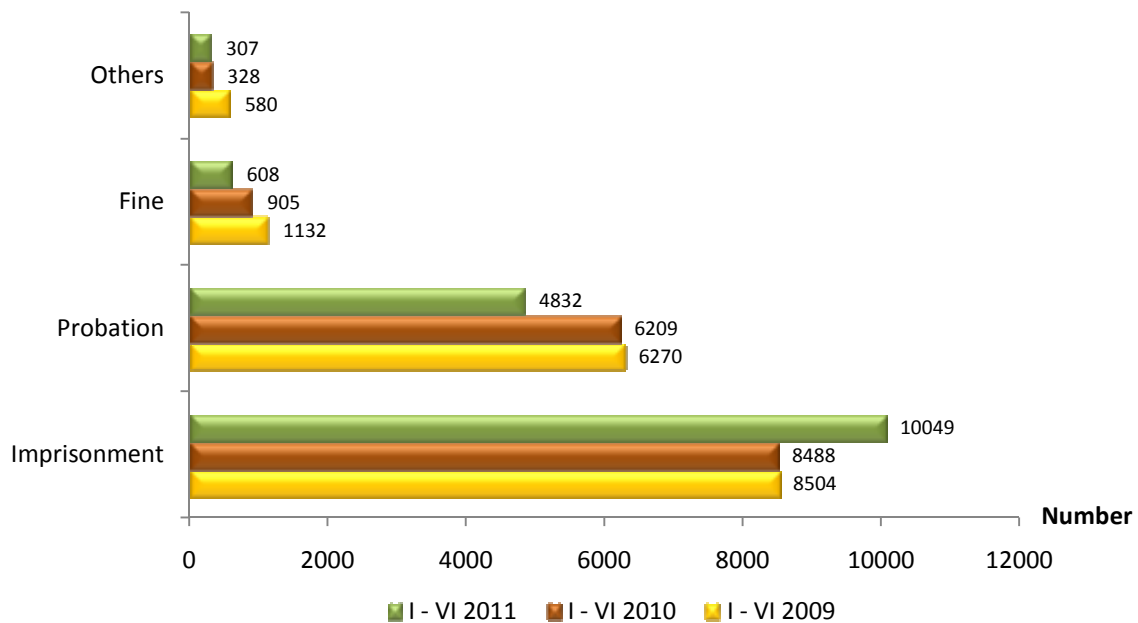
Persons convicted by penalty imposed

The number of persons convicted to imprisonment in first six months of 2011 is 10 049 or 63.6% of the total number of convicted persons.

The highest number and rate are persons convicted to imprisonment up to 6 months - 4 980 persons (49.6%) and from 6 months to 1year – 2 857 persons (28.4%).

Penalty of probation is imposed to 4 832 persons (30.6% of the total number of convicted persons) and fine – 608 persons.

Figure 2. Persons convicted by penalty imposed in the first semesters of 2009, 2010 and 2011



METHODOLOGICAL NOTES

Data on crimes and persons convicted are obtained by processing six months information received from the regional, district and military courts on penal trials.

The survey object is the activity of the regional and district courts on penal trials of general, private and administrative character. Since 1998 the information for the activity of military courts is also included. The information about the activity of Supreme Court of Cassation is not included. Data from Prosecutor's Office of the Republic of Bulgaria are not included in statistical data for first half of the year.

Surveyed units are crimes, concluded with penalty inflicted and persons convicted with sentences come into force.

The numbers of crimes and persons convicted for certain reference year or period include those with sentence that has come into force during the same year or period.

Persons convicted with all kinds of inflicted penalty, including conditionally sentenced persons are included in the total number of persons convicted.

In the number of crimes concluded with penalty inflicted are included all crimes with inflicted penalty regardless they had been committed by one or more persons.

The age of persons convicted is given in completed years. Persons who have completed 14, but not 18 years are considered juveniles.

Convicted juvenile persons are included in the total number of persons convicted.

For additional information see NSI web page - <http://www.nsi.bg/otrasalen.php?otr=50>

Table 1

CRIMES WITH PENALTY INFLICTED AND PERSONS CONVICTED FOR THE FIRST SEMESTERS OF 2009, 2010 AND 2011¹

Kind of crime	First semester of 2009		First semester of 2010		First semester of 2011 ³	
	Crimes with penalty inflicted	Persons convicted	Crimes with penalty inflicted	Persons convicted	Crimes with penalty inflicted	Persons convicted
Total²	14863	16486	14656	15930	14136	15796
of which:						
Crimes against the person	961	951	937	922	811	774
of which:						
Homicide						
(committed and attempted)	72	77	62	63	59	64
Bodily harm	464	498	487	505	370	376
Debauchery	187	171	151	144	139	117
of which: rape						
(committed and attempted)	71	73	69	74	38	41
Crimes against marriage, family and youth	199	206	245	231	295	281
Crimes against the property	5523	7155	5099	6457	5068	6772
of which:						
Theft	4021	5540	3623	4863	3936	5564
Robbery	443	533	487	603	384	469
Misappropriation	88	94	68	66	71	79
Fraud	279	297	289	321	213	230
Extortion	21	23	36	39	28	23
Destruction and damaging of property	336	331	346	320	208	182
Crimes against the economy	371	467	511	570	1120	1191
of which: crimes against the customs regime	35	65	50	62	78	86
Crimes against the financial, tax						



www.nsi.bg and insurance system	56	50	71	64	61	49
Crimes against the activity of state bodies, public organisations and persons performing public duties	579	617	682	789	648	756
of which:						
Illegal crossing of the Boundary	378	408	425	521	416	524
Bringing of persons across the boundary	36	48	45	59	48	60
Bribery	38	37	65	64	35	33
Documentary crimes	391	335	507	418	471	406
Crimes against the order and the public peace	320	303	357	359	269	297
of which: hooliganism	268	246	292	283	182	179
Generally dangerous crimes	6352	6276	6125	6000	5289	5168
of which:						
Arson	40	39	39	40	34	34
Illegal production, possessing and use of weapon, explosion and Ammunition	211	188	238	197	224	193
Crimes against the transport and communications	5477	5403	5040	4953	4361	4270
Theft of motor vehicles	161	178	131	149	83	103
Drug-related crimes	439	445	651	638	571	548
Military crimes	25	27	35	31	4	4

¹According to sentences come into force

²Incl. persons convicted for crimes committed
abroad.

³ Preliminary data.



Table 2

PERSONS CONVICTED BY SEX AND AGE FOR FIRST SEMESTERS OF 2009, 2010 AND 2011 ¹

(Number)

Age	First semester of 2009			First semester of 2010			First semester of 2011 ³		
	Total	Male	Female	Total	Male	Female	Total	Male	Female
Total ²	16486	15559	927	15930	14960	970	15760	14694	1066
Juveniles (14 - 17)	1543	1468	75	1179	1128	51	1038	1002	36
Adults (over 18)	14943	14091	852	14751	13832	919	14722	13692	1030
18-24	4754	4530	224	4539	4330	209	4305	4109	196
25-29	2800	2642	158	2754	2614	140	2606	2461	145
30-39	3874	3649	225	3948	3685	263	4065	3767	298
40-49	2197	2050	147	2169	1996	173	2297	2088	209
50 and over	1318	1220	98	1341	1207	134	1449	1267	182

¹According to sentences come into force

²Incl. persons convicted for crimes committed

abroad.

³ Preliminary data.



Table 3

**PERSONS CONVICTED BY PENALTIES IMPOSED IN THE FIRST SEMESTERS OF
2009, 2010 AND 2011 ¹**

Penalties imposed	(Number)		
	First semester of 2009	First semester of 2010	First semester of 2011 ³
Total²	16486	15930	15796
Effective sentences	11271	10749	9276
Conditional sentences	5215	5181	6520
Imprisonment	8504	8488	10049
Up to 6 months	4657	4385	4980
From 6 months to 1 year	2086	2223	2857
From 1 to 3 years	1499	1572	1852
From 3 to 5 years	160	197	233
From 5 to 10 years	63	75	77
From 10 to 15 years	26	15	31
Over 15 years	13	21	19
Life imprisonment	-	3	2
Life imprisonment without parole	1	-	3
Fine	1132	905	608
Probation	6270	6209	4832
Others	579	325	302

¹According to sentences come into force

²Incl. persons convicted for crimes committed abroad.

³Preliminary data.